

100% Money Back
Guarantee

Vendor:Oracle

Exam Code:1Z0-047

Exam Name:Oracle Database SQL Expert

Version:Demo

QUESTION 1

View the Exhibit and examine the description of the EMPLOYEES table.

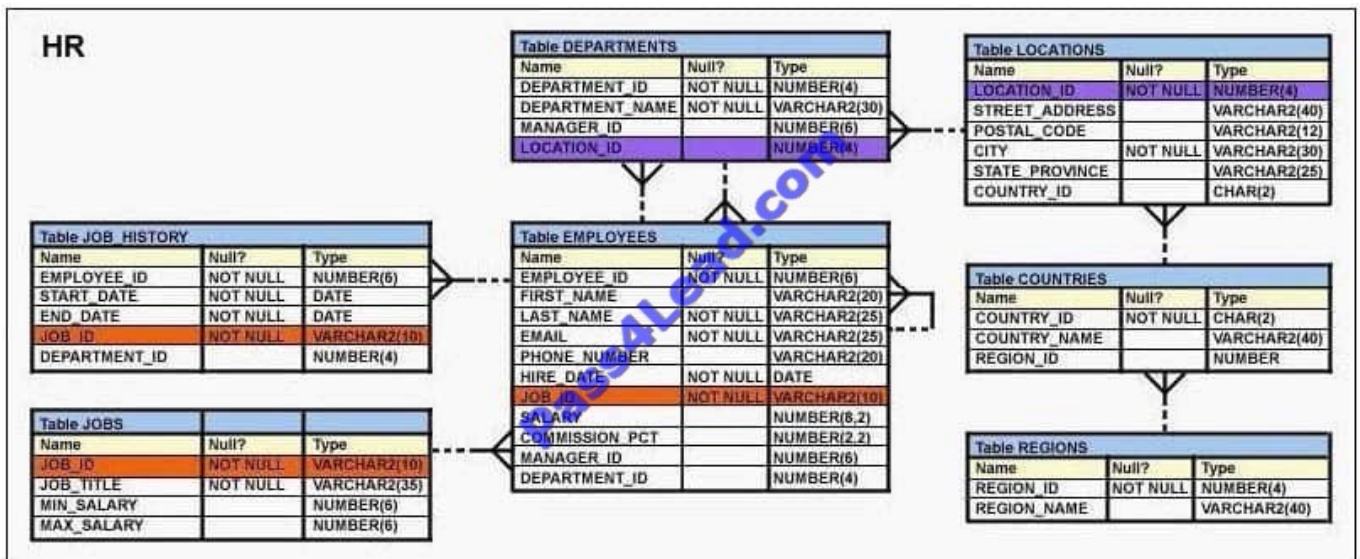
Evaluate the following SQL statement:

```
SELECT first_name, employee_id, NEXT_DAY(ADD_MONTHS(hire_date, 6), 1) "Review" FROM employees;
```

The query was written to retrieve the FIRST_NAME, EMPLOYEE_ID, and review date for employees.

The review date is the first Monday after the completion of six months of the hiring. The NLS_TERRITORY parameter is set to AMERICA in the session.

Which statement is true regarding this query?



- A. The query would execute to give the desired output.
- B. The query would not execute because date functions cannot be nested.
- C. The query would execute but the output would give review dates that are Sundays.
- D. The query would not execute because the NEXT_DAY function accepts a string as argument.

Correct Answer: C

QUESTION 2

Which three statements are true regarding group functions? (Choose three.)

- A. They can be used on columns or expressions.
- B. They can be passed as an argument to another group function.
- C. They can be used only with a SQL statement that has the GROUP BY clause.

- D. They can be used on only one column in the SELECT clause of a SQL statement.
- E. They can be used along with the single-row function in the SELECT clause of a SQL statement.

Correct Answer: ABE

QUESTION 3

View the Exhibit and examine the data in ORDERS_MASTER and MONTHLY_ORDERS tables.

ORDERS_MASTER	
ORDER_ID	ORDER_TOTAL
1	1000
2	2000
3	3000
4	

MONTHLY_ORDERS	
ORDER_ID	ORDER_TOTAL
2	2500
3	

Evaluate the following MERGE statement:

```
MERGE INTO orders_master o USING monthly_orders m ON (o.order_id = m.order_id) WHEN MATCHED THEN UPDATE SET o.order_total = m.order_total DELETE WHERE (m.order_total IS NULL) WHEN NOT MATCHED THEN INSERT VALUES (m.order_id, m.order_total);
```

 What would be the outcome of the above statement?

- A. The ORDERS_MASTER table would contain the ORDER_IDs 1 and 2.
- B. The ORDERS_MASTER table would contain the ORDER_IDs 1,2 and 3.
- C. The ORDERS_MASTER table would contain the ORDER_IDs 1,2 and 4.
- D. The ORDERS_MASTER table would contain the ORDER IDs 1,2,3 and 4.

Correct Answer: C

QUESTION 4

Evaluate the following command:

```
CREATE TABLE employees
```

```
(employee_id NUMBER(2) PRIMARY KEY,
```

```
last_name VARCHAR2(25) NOT NULL,  
department_id NUMBER(2), job_id VARCHAR2(8),  
salary NUMBER(10,2));
```

You issue the following command to create a view that displays the IDs and last names of the sales staff in the organization:

```
CREATE OR REPLACE VIEW sales_staff_vu AS  
SELECT employee_id, last_name job_id  
FROM employees  
WHERE job_id LIKE \'SA_%\' WITH CHECK OPTION;
```

Which statements are true regarding the above view? (Choose all that apply.)

- A. It allows you to insert details of all new staff into the EMPLOYEES table.
- B. It allows you to delete the details of the existing sales staff from the EMPLOYEES table.
- C. It allows you to update the job ids of the existing sales staff to any other job id in the EMPLOYEES table.
- D. It allows you to insert the IDs, last names and job ids of the sales staff from the view if it is used in multitable INSERT statements.

Correct Answer: BD

QUESTION 5

View the Exhibit and examine the structure of the ORDERS table.

The ORDERS table belongs to the user OE. HR is another user in the database.

Evaluate the commands issued by users OE and HR in the following order:

Statement 1 by user OE: GRANT SELECT,

UPDATE(customer_id, order_total)

ON orders

TOhr;

Statement 1 by user HR: SELECT * FROM oe.orders;

Statement 2 by user HR: UPDATE oe.orders

SET order_totah 10000;

Which statement is true regarding the above commands?

ORDERS		
Name	Null?	Type
ORDER ID	NOT NULL	NUMBER (12)
ORDER DATE		DATE
CUSTOMER ID		NUMBER (6)
ORDER TOTAL		NUMBER (8,2)

- A. Statement 1 by user OE would not work because the statement has to be issued by the DBA.
- B. Statement 2 by user HR would not work because the grant is only for SELECT in a subquery of update.
- C. There are no errors in the statements issued by OE and HR; all the statements would execute successfully.
- D. Statement 1 by user HR would not work because SELECT and UPDATE privileges have been granted only on CUSTOMER_ID and ORDER_TOTAL columns.

Correct Answer: C

QUESTION 6

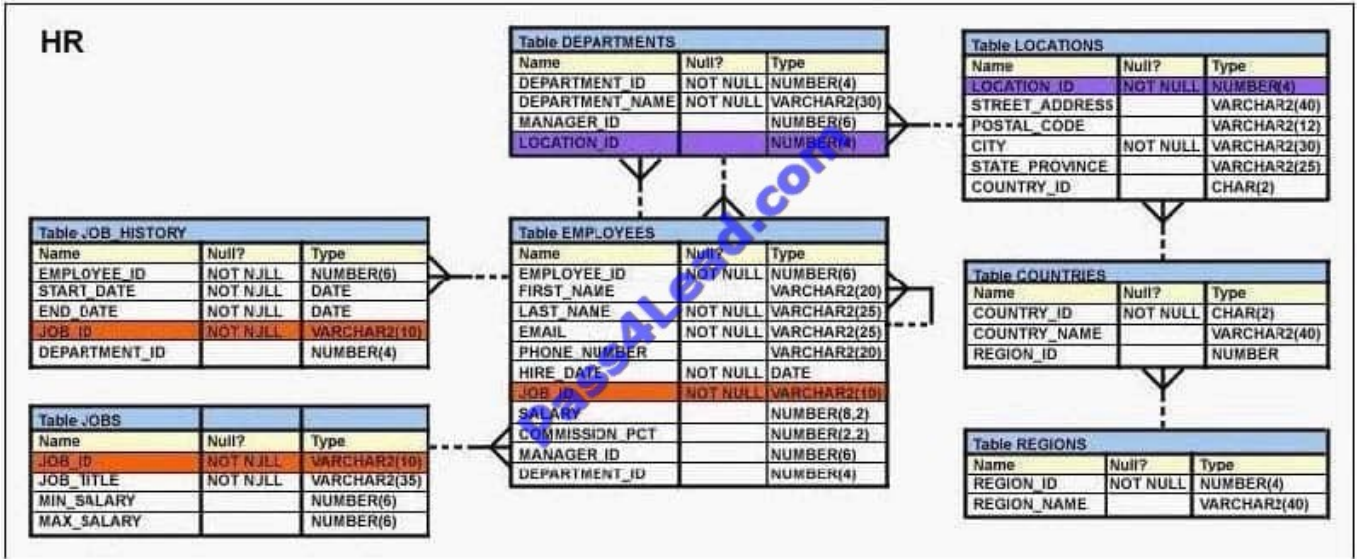
View the Exhibit and examine the description of EMPLOYEES and DEPARTMENTS tables. You want to display the EMPLOYEE_ID, LAST_NAME, and SALARY for the employees who get the maximum salary in their respective departments. The following SQL statement was written:

```

WITH
SELECT employee_id, last_name, salary
FROM employees
WHERE (department_id, salary) = ANY (SELECT*
FROM dept_max)
dept_max as (SELECT d.department_id, max(salary)
FROM departments d JOIN employees j
ON (d. department_id = j. department_id)
GROUP BY d. department_id);

```

Which statement is true regarding the execution and the output of this statement?



- A. The statement would execute and give the desired results.
- B. The statement would not execute because the = ANY comparison operator is used instead of=.
- C. The statement would not execute because the main query block uses the query name before it is even created.
- D. The statement would not execute because the comma is missing between the main query block and the query name.

Correct Answer: C

QUESTION 7

Which three statements are true regarding single-row functions? (Choose three.)

- A. They can accept only one argument.
- B. They can be nested up to only two levels.
- C. They can return multiple values of more than one data type.
- D. They can be used in SELECT, WHERE, and ORDER BY clauses.
- E. They can modify the data type of the argument that is referenced.
- F. They can accept a column name, expression, variable name, or a user-supplied constant as arguments.

Correct Answer: DEF

QUESTION 8

Given below is a list of datetime data types and examples of values stored in them in a random order:

Datatype Example

- 1) INTERVAL YEAR TO MONTH a) 2003-04-15 8:00:00 -8:00\`
- 2) TIMESTAMP WITH LOCAL TIME ZONE b) \\'-K)6 03:30:16.000000\`
- 3) TIMESTAMP WITH TIME ZONE c) \\'17-JUN-03 12.00.00.000000 AM\`4)INTERVAL DAY TO SECOND d) \\'402-00\`

Identify the option that correctly matches the data types with the values.

- A. 1-d.2-c.3-a.4-b
- B. 1-b.2-a.3-c.4-d
- C. 1-b.2-a, 3-d, 4-c
- D. 1-d.2-c.3-b.4-a

Correct Answer: A

QUESTION 9

View the Exhibit and examine the structure of the ORDERS table. The columns ORDER_MODE and ORDER_TOTAL have the default values \\'direct\` and 0 respectively.

ORDERS		
NAME	NULL?	TYPE
ORDER_ID	NOT NULL	NUMBER(12)
ORDER_DATE	NOT NULL	TIMESTAMP(6)
ORDER_MODE		VARCHAR2(8)
CUSTOMER_ID	NOT NULL	NUMBER(6)
ORDER_TOTAL		NUMBER(8,2)

Which two INSERT statements are valid? (Choose two.)

- A. INSERT INTO orders VALUES (1, 09-mar-2007\`, \\'online\`, 1000);
- B. INSERT INTO orders(order_id ,order_date ,order_mode ,customer_id ,order_total)VALUES(1 ,TO_DATE(NULL), \\'online\`, 101, NULL);
- C. INSERT INTO(SELECT order_id ,order_date .customer_id FROM orders)VALUES (1,09-mar- 2007\`, 101);
- D. INSERT INTO orders VALUES (1,09-mar-2007\`, DEFAULT, 101, DEFAULT);
- E. INSERT INTO orders(order_id ,order_date ,order_mode .order_total) VALUES (1 ,\\'10-mar- 2007\`,\\'online\`,1000);

Correct Answer: CD

QUESTION 10

The first DROP operation is performed on PRODUCTS table using the following command:

```
DROP TABLE products PURGE;
```

Then you performed the FLASHBACK operation by using the following command:

```
FLASHBACK TABLE products TO BEFORE DROP;
```

Which statement describes the outcome of the FLASHBACK command?

- A. It recovers only the table structure.
- B. It recovers the table structure, data, and the indexes.
- C. It recovers the table structure and data but not the related indexes.
- D. It is not possible to recover the table structure, data, or the related indexes.

Correct Answer: D

QUESTION 11

View the Exhibit and examine the description of the EMPLOYEES table. You want to display the EMPLOYEE_ID, FIRST_NAME, and DEPARTMENT_ID for all the employees who work in the same department and have the same manager as

that of the employee having EMPLOYEE_ID 104. To accomplish the task, you execute the following SQL statement:

```
SELECT employee_id, first_name, department_id
```

```
FROM employees
```

```
WHERE (manager_id, department_id) =(SELECT department_id, manager_id FROM employees WHERE employee_id = 104)
```

```
AND employee_id 104;
```

When you execute the statement it does not produce the desired output. What is the reason for this?

- A. The WHERE clause condition in the main query is using the = comparison operator, instead of EXISTS.
- B. The WHERE clause condition in the main query is using the = comparison operator, instead of the IN operator.
- C. The WHERE clause condition in the main query is using the = comparison operator, instead of the = ANY operator.
- D. The columns in the WHERE clause condition of the main query and the columns selected in the subquery should be in the same order.

Correct Answer: D

QUESTION 12

Which statement best describes the GROUPING function?

- A. It is used to set the order for the groups to be used for calculating the grand totals and subtotals.
- B. It is used to form various groups to calculate total and subtotals created using ROLLUP and CUBE operators.
- C. It is used to identify if the NULL value in an expression is a stored NULL value or created by ROLLUP or CUBE.
- D. It is used to specify the concatenated group expressions to be used for calculating the grand totals and subtotals.

Correct Answer: C

To Read the [Whole Q&As](#), please purchase the [Complete Version](#) from [Our website](#).

Try our product !

100% Guaranteed Success

100% Money Back Guarantee

365 Days Free Update

Instant Download After Purchase

24x7 Customer Support

Average **99.9%** Success Rate

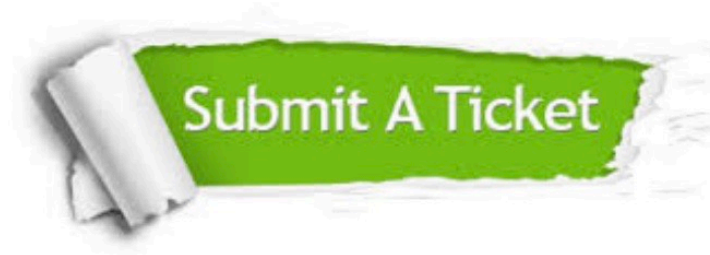
More than **800,000** Satisfied Customers Worldwide

Multi-Platform capabilities - **Windows, Mac, Android, iPhone, iPod, iPad, Kindle**

Need Help

Please provide as much detail as possible so we can best assist you.

To update a previously submitted ticket:



 <p>One Year Free Update Free update is available within One Year after your purchase. After One Year, you will get 50% discounts for updating. And we are proud to boast a 24/7 efficient Customer Support system via Email.</p>	 <p>Money Back Guarantee To ensure that you are spending on quality products, we provide 100% money back guarantee for 30 days from the date of purchase.</p>	 <p>Security & Privacy We respect customer privacy. We use McAfee's security service to provide you with utmost security for your personal information & peace of mind.</p>
---	---	--

Any charges made through this site will appear as Global Simulators Limited.

All trademarks are the property of their respective owners.