

100% Money Back
Guarantee

Vendor:Cisco

Exam Code:200-401

Exam Name:Managing Industrial Networks with Cisco
Networking Technologies (IMINS)

Version:Demo

QUESTION 1

An administrator has connected devices to an industrial switch and, for security reasons, wants the dynamically learned MAC addresses from the address table added to the running configuration. What must be done to accomplish this?

- A. Enable port security and use the keyword sticky.
- B. Set the switchport mode to trunk and save the running configuration.
- C. Use the switchport protected command to have the MAC addresses added to the configuration.
- D. Use the no switchport port-security command to allow MAC addresses to be added to the configuration.

Correct Answer: A

QUESTION 2

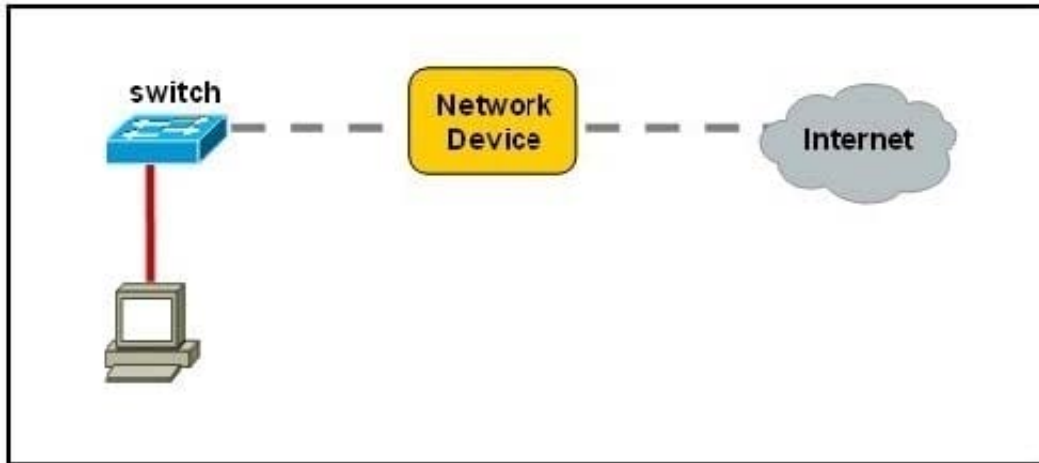
Which two ports does EtherNet/IP use to communicate? (Choose two.)

- A. TCP 44818
- B. UDP 44818
- C. TCP 502
- D. UDP 502
- E. TCP 2222
- F. UDP 2222

Correct Answer: AF

QUESTION 3

Exhibit:



Refer to the exhibit. An industrial ruggedized network device needs to be installed in the place of the icon labeled Network Device to accommodate a leased line attachment to the Internet. Which network device and interface configuration meets the minimum requirements for this installation?

- A. a router with two Ethernet interfaces
- B. a switch with two Ethernet interfaces
- C. a router with one Ethernet and one serial interface
- D. a switch with one Ethernet and one serial interface
- E. a router with one Ethernet and one modem interface

Correct Answer: C

QUESTION 4

What is the most critical step to perform when you are using optical fiber connectors?

- A. Cover with dust caps when not in use.
- B. Immerse in alcohol prior to use.
- C. Blow off and carefully wipe down with a tissue before and after each use.
- D. Lightly sand with cloth prior to mating.

Correct Answer: A

QUESTION 5

According to the Purdue Reference Model, at which layer would you perform manufacturing operations and control?

- A. Level 0
- B. Level 1

C. Level 2

D. Level 3

E. Level 4

Correct Answer: D

QUESTION 6

What is a reason to use user EXEC mode on an industrial switch?

A. to verify commands that you have entered

B. to change terminal settings

C. to configure VLAN parameters

D. to configure parameters that apply to the entire switch

Correct Answer: B

QUESTION 7

EtherNet/IP is an Ethernet implementation of which protocol?

A. CIP

B. Industrial Protocol

C. DeviceNet

D. ControlNet

Correct Answer: A

QUESTION 8

Which three pieces of information must be maintained for all stakeholders as part of the change management process? (Choose three.)

A. the location of the person who applied the change

B. the date and time that the change was applied and on which device

C. the original change request form that indicates why the change is necessary

D. the size of the change (in bytes)

E. a description of the actual change itself (configuration, program code, and so on)

- F. the names of the current members of the change advisory board
- G. the industrial protocol that is used

Correct Answer: BCE

QUESTION 9

At which Layer would you troubleshoot a cabling issue?

- A. Layer 1
- B. Layer 2
- C. Layer 3
- D. Layer 4

Correct Answer: A

QUESTION 10

What do deflections indicate to the time domain reflectometer user?

- A. They indicate splices, water in the cable, split pairs, and discontinuities or faults.
- B. Do not connect live circuit cables to the input of the time domain reflectometer. Connect the cable that is being tested to the cable connector on the front panel of the time domain reflectometer.
- C. Upward deflections indicate high-impedance mismatches or opens, and downward deflections indicate shorts or low-impedance mismatches.
- D. They are used to select the I/O impedance of the time domain reflectometer. You can select 50, 75, 95, or 125? impedances.

Correct Answer: C

QUESTION 11

What should be done with unused conductors in copper unshielded or shielded twisted-pair network cables?

- A. terminate in their characteristic impedance
- B. trim back and properly insulate
- C. connect to protective earth
- D. splice to a used conductor

Correct Answer: A

QUESTION 12

What are two symptoms of duplex mismatch? (Choose two.)

- A. Ping does not return from one direction versus the other direction.
- B. Communication is slow and locks up.
- C. Speed is seen equally slow in both directions.
- D. The half-duplex side sees frame sequence errors or runt frames.
- E. The full-duplex side sees CRC errors.

Correct Answer: BD