

**100%** Money Back  
**Guarantee**

**Vendor:**Cisco

**Exam Code:**350-029

**Exam Name:**CCIE Service Provider written

**Version:**Demo

### QUESTION 1

What are the three operating modes of HDLC? (Choose three.)

- A. Normal Peer Mode
- B. Asynchronous Balanced Mode
- C. Asynchronous Client Mode
- D. Normal Response Mode
- E. Asynchronous Response Mode
- F. Normal Balanced Mode

Correct Answer: BDE

---

### QUESTION 2

All secure domain routers (SDRs) have shared attribute and resources. Which three resources are shared all SDRs? (Choose three.)

- A. privilege-level configuration
- B. fabric cards
- C. SNMP traps
- D. admin-level configuration
- E. exec-level configuration

Correct Answer: BCD

#### 1.4. SP high end product

There are shared attributes and resources common to all SDRs. It is important to note that the shared resources are critical to the system's overall operation.

Some examples of shared resources that are common to SDR are:

-Environmental resources.

-Power supplies.

-

Fan trays.

-

Fan controllers.

-Fabric cards.

Software related:

\*

Exec-level configuration. Configuration in admin mode can affect all SDRs.

\*

Admin-level configuration. Admin-level command can impact owner SDR and non-owner SDRs.

\*

Process instances. A few processes are shared, systemwide processes such as LRd (SDR Deamon). Management:

\*

SNMP traps. For example, shared power, fans, and fabric-related traps.

\*

SNMP polling. Shared for power, fans, and fabric-related MIBS.

\*

Syslogs. Some non-owner SDRs are logged to the owner SDR.

\*

Shared environment variables.

---

### QUESTION 3

Select and Place:

Drag and drop the Cisco IOS XR commands used to create a policy that will limit all traffic to 20% of interface POS 0/0/0/C on the left to the correct order for implementation on the right.

exceed-action drop	1
exit	2
class TRAFFIC_CLASS	3
service-policy output POLICE_POLICY	4
policy-map POLICE_POLICY	5
configure	6
commit	7
interface pos 0/0/0/0	8
conform-action transmit	9
police rate percent 20	10

Correct Answer:

Drag and drop the Cisco IOS XR commands used to create a policy that will limit all traffic to 20% of interface POS 0/0/0/C on the left to the correct order for implementation on the right.

	configure
	policy-map POLICE_POLICY
	class TRAFFIC_CLASS
	police rate percent 20
	conform-action transmit
	exceed-action drop
	exit
	interface pos 0/0/0/0
	service-policy output POLICE_POLICY
	commit

#### QUESTION 4

Select and Place:

A network engineer is configuring L2VPN static point-to-point cross connect on the CRS router. Drag the configuration steps on the left in the correct order on the right.

Configure point-to-point cross-connect	Step 1
Select the interface.	Step 2
Commit changes.	Step 3
Enable L2VPN mode.	Step 4
Enable internetworking for IPv4.	Step 5
Configure a cross-connect group.	Step 6
Enable configure mode.	Step 7
Configure the <b>neighbor pw-id</b> command.	Step 8

Correct Answer:

A network engineer is configuring L2VPN static point-to-point cross connect on the CRS router. Drag the configuration steps on the left in the correct order on the right.

	Enable configure mode.
	Enable L2VPN mode.
	Configure a cross-connect group.
	Configure point-to-point cross-connect.
	Enable internetworking for IPv4.
	Select the interface.
	Configure the <b>neighbor pw id</b> command.
	Commit changes.

## QUESTION 5

Refer to the exhibit.

**vrf definition CUST-1**  
**rd 100:1**  
**route-target export 100:1**  
**route-target import 100:1**

**vrf definition INTERNET**  
**rd 100:3**  
**route-target export 100:3**  
**route-target import 100:3**

**vrf definition CUST-2**  
**rd 100:2**  
**route-target export 100:2**  
**route-target import 100:2**

An ISP network runs L3VPN MPLS over the IP core to deliver internet service for the customer as a central service

through a dedicated VRF.

Which route target plan delivers the internet service to customers while preserving customer VRF privacy?

- A. vrf definition CUST-1 route-target export 100:2 route-target import 100:2 ! vrf definition CUST-2 route-target export 100:1 route-target import 100:1 ! vrf definition INTERNET route-target export 100:1 route-target import 100:2
- B. vrf definition CUST-1 route-target export 100:3 route-target import 100:3 ! vrf definition CUST-2 route-target export 100:3 route-target import 100:3 ! vrf definition INTERNET route-target export 100:1 route-target import 100:2
- C. vrf definition CUST-1 route-target export 100:3 ! vrf definition CUST-2 route-target export 100:3 ! vrf definition INTERNET route-target import 100:1 route-target import 100:2
- D. vrf definition CUST-1 route-target import 100:3 ! vrf definition CUST-2 route-target import 100:3 ! vrf definition INTERNET route-target import 100:1 route-target import 100:2

Correct Answer: D

## QUESTION 6

Select and Place:

A network engineer is configuring L2VPN static point-to-point cross connect on the CRS router. Drag the configuration steps on the left in the correct order on the right.

Configure point-to-point cross-connect	Step 1
Select the interface.	Step 2
Commit changes.	Step 3
Enable L2VPN mode.	Step 4
Enable internetworking for IPv4.	Step 5
Configure a cross-connect group.	Step 6
Enable configure mode.	Step 7
Configure the <b>neighbor pw-id</b> command.	Step 8

Correct Answer:

A network engineer is configuring L2VPN static point-to-point cross connect on the CRS router. Drag the configuration steps on the left in the correct order on the right.

	Enable configure mode.
	Enable L2VPN mode.
	Configure a cross-connect group.
	Configure point-to-point cross-connect.
	Enable internetworking for IPv4.
	Select the interface.
	Configure the <b>neighbor pw id</b> command.
	Commit changes.

### QUESTION 7

Typical ADSL broadband Internet access requires a username and password to be entered on end-user PC connected to the ADSL modem in order for the end user to gain access to the Internet. If a Cisco ADSL router is used instead of an ADSL modem, what functionality is required on the Cisco ADSL router so the end- user connected to the Cisco ADSL router can access the Internet without entering a username and password?

- A. Route Bridge Encapsulation (RBE)
- B. PPPoA
- C. Integrated Routing and Bridging (IRB)
- D. AAA
- E. PPPoE client

Correct Answer: E

### QUESTION 8

An engineer is designing a security method for a service provider company that needs to secure BGP peering with external peers. Based on the options provided, which three security precautions should be taken? (Choose three.)

- A. Enable BGP neighbor authentication with MD5.
- B. Enable the BGP Time to Live Security Check feature.
- C. Limit the AS path length.
- D. Disable ebgp-multihop.
- E. Enable bgp bestpath as-path ignore.
- F. Enable bgp-policy.

Correct Answer: ABC

---

#### QUESTION 9

Which of the following IOS commands cause syslog messages to be stamped with time and dates?

- A. logging datetime on
- B. service timestamps log datetime
- C. service logging datetime
- D. logging timestamps on
- E. logging trap datetime

Correct Answer: B

Service timestamps

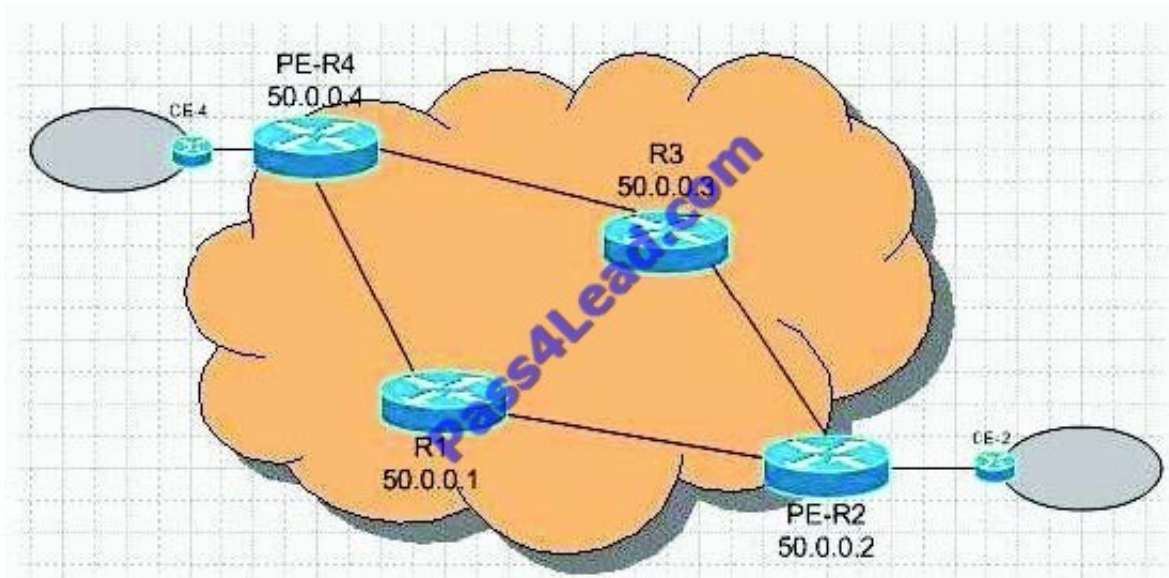
To configure the system to apply a time stamp to debugging messages or system logging messages, use the service timestamps command in global configuration mode. To disable this service, use the no form of this command.

Service timestamps [debug | log] [uptime | datetime [msec]] [localtime] [show-timezone] [year] no service timestamps [debug | log]

---

#### QUESTION 10

What is the proper MP-BGP configuration between the shown PE routers to implement MPLS VPNs on PER2?



- A. None of the above
- B. router bgp 1 neighbor 50.0.0.4 remote-as 1 neighbor 50.0.0.4 update-source Loopback0 no auto-summary ! address-family ipv4 neighbor 50.0.0.4 activate neighbor 50.0.0.4 send-community extended exit-address-family



C. router bgp 1 neighbor 50.0.0.4 remote-as 1 neighbor 50.0.0.4 update-source Loopback0 no auto-summary ! address-family vpnv4 neighbor 50.0.0.4 activate neighbor 50.0.0.4 send-community extended exit-address-family

D. router bgp 1 neighbor 50.0.0.4 remote-as 1 neighbor 50.0.0.4 update-source Loopback0 no auto-summary ! address-family vpnv4 unicast multicast neighbor 50.0.0.4 activate neighbor 50.0.0.4 send-community extended exit-address-family

Correct Answer: C

---

### QUESTION 11

How many messages does Internet Key Exchange use to negotiate SA characteristics when it runs in aggressive mode?

- A. 3
- B. 4
- C. 5
- D. 2
- E. 6

Correct Answer: A

---

### QUESTION 12

Which three BGP attributes are carried by TLV? (Choose three)

- A. Local Preference
- B. Weight
- C. Origin
- D. Network Layer Reachability Information (NLRI)
- E. Multiple Exit Discriminator (MED)

Correct Answer: ADE

[http://www.cisco.com/en/US/tech/tk365/technologies\\_tech\\_note09186a0080094bbd.shtml#backi](http://www.cisco.com/en/US/tech/tk365/technologies_tech_note09186a0080094bbd.shtml#backi) nf

oBGP uses TLVs to carry attributes such as Network Layer Reachability Information (NLRI), Multiple Exit Discriminator (MED), and local preference. Several routing protocols use TLVs to carry a variety of attributes. Cisco Discovery Protocol (CDP), Label Discovery Protocol (LDP), and Border Gateway Protocol (BGP) are examples of protocols that use TLVs. BGP uses TLVs to carry attributes such as Network Layer Reachability Information (NLRI), Multiple Exit Discriminator (MED), and local preference.



To Read the [Whole Q&As](#), please purchase the [Complete Version](#) from [Our website](#).

## Try our product !

**100%** Guaranteed Success

**100%** Money Back Guarantee

**365** Days Free Update

**Instant Download** After Purchase

**24x7** Customer Support

Average **99.9%** Success Rate

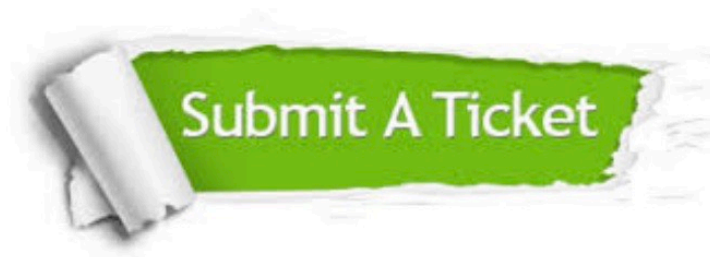
More than **800,000** Satisfied Customers Worldwide

Multi-Platform capabilities - **Windows, Mac, Android, iPhone, iPod, iPad, Kindle**

## Need Help

Please provide as much detail as possible so we can best assist you.

To update a previously submitted ticket:



 <b>One Year Free Update</b> <p>Free update is available within One Year after your purchase. After One Year, you will get 50% discounts for updating. And we are proud to boast a 24/7 efficient Customer Support system via Email.</p>	 <b>Money Back Guarantee</b> <p>To ensure that you are spending on quality products, we provide 100% money back guarantee for 30 days from the date of purchase.</p>	 <b>Security &amp; Privacy</b> <p>We respect customer privacy. We use McAfee's security service to provide you with utmost security for your personal information &amp; peace of mind.</p>
---	---	--

Any charges made through this site will appear as Global Simulators Limited.

All trademarks are the property of their respective owners.