

100% Money Back
Guarantee

Vendor: Novell

Exam Code: 050-701

Exam Name: Upgrading t Novell Open Enterprise Server
for NetWare

Version: Demo

Exam Name:	Upgrading to Novell Open Enterprise Server for NetWare		
Exam Type:	Novell		
Exam Code:	50-701	Total Questions:	167

Question: 1

After upgrading a NetWare 5.1 server to OES NetWare, you can't mount volume DATA. Given that DATA is an NSS volume, which command will fix the problem?

- A. LOAD NW51.NSS
- B. LOAD ZLSS.NSS
- C. VCU DATA DATA2
- D. VOLMN DATA DATA2
- E. NSS /NW51VOLUMEUPGRADE=ON
- F. NSS /ZLSSVOLUMEUPGRADE=ALL
- G. NSS /NW51VOLUMEUPGRADE=ALL

Answer: F

Question: 2

Distributed File Services uses _____, which allows volumes to be joined together such that they appear as subdirectories in one file system. Answer:

- A. JUNCTIONS

Answer: A

Question: 3

Which products are installed during a Management Server patterned deployment? (Choose 2.)

- A. iSCSI
- B. eGuide
- C. OpenSSH
- D. iFolder
- E. iManager
- F. Virtual Office

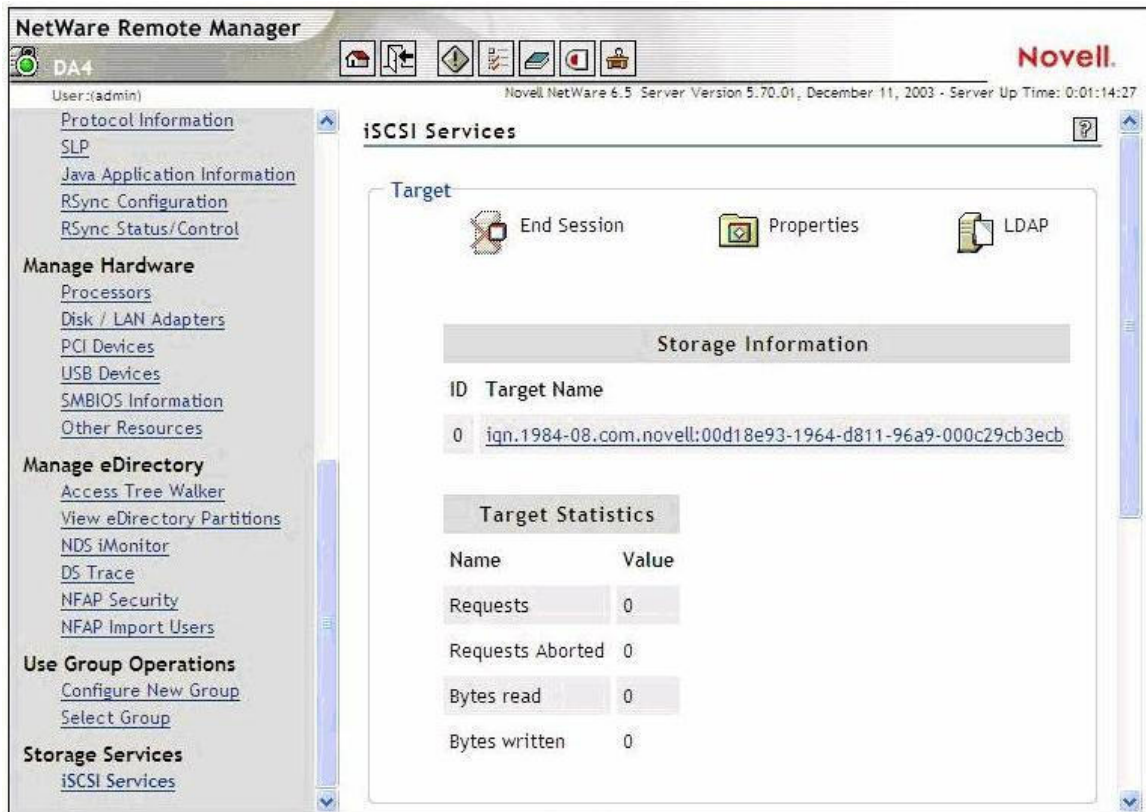
Answer: B, E

Question: 4

Click the Exhibit button to begin.

If you wanted to connect to the iSCSI target displayed in the exhibit, what command would you enter at the iSCSI initiator server console? The IP address of the target is 10.0.0.4.

Exam Name:	Upgrading to Novell Open Enterprise Server for NetWare		
Exam Type:	Novell		
Exam Code:	50-701	Total Questions:	167



- A. ISCSIINIT CONNECT 10.0.0.4 DA4
- B. ISCSIINIT CONNECT TARGET=10.0.0.4
- C. ISCSIINIT 10.0.0.4 iqn.1984-08.com.novell:00d18e93-1964-d811-96a9-000c29cb3ecb
- D. ISCSIINIT CONNECT 10.0.0.4 iqn.1984-08.com.novell:00d18e93-1964-d811-96a9-000c29cb3ecb
- E. ISCSIINIT CONNECT iqn.1984-08.com.novell:00d18e93-1964-d811-96a9-000c29cb3ecb 10.0.0.4
- F. ISCSIINIT CONNECT TARGET=10.0.0.4 NAME=iqn.1984-08.com.novell:00d18e93-1964-d811-96a9-000c29cb3ecb

Answer: D

Question: 5

You have configured a DFS Management Context with the VLDB service running on DA1. In the SHARED directory on DA1's DATA volume, you created a junction to the root of the VOL1 volume on DA2. You then created a CIFS share for the SHARED directory and granted the appropriate rights to your user and group objects to access the directory. When users access the junction from their Windows 2000 Professional workstations without the Novell Client installed, it fails to take them to VOL1 on DA2. Which is the resolution to this problem?

- A. Load VLDB.NLM on DA2.
- B. Add a VLDB replica to DA2.
- C. Enable DFS support for CIFS clients.
- D. Upgrade the workstations to Windows XP Home or Professional.
- E. Run the VERIFY utility to check the integrity of the pool where VOL1 resides on DA2.

Answer: C

Exam Name:	Upgrading to Novell Open Enterprise Server for NetWare		
Exam Type:	Novell		
Exam Code:	50-701	Total Questions:	167

Question: 6

A volume on your OES NetWare server has a security label of Password and Token. A user in your tree has logged in using an eDirectory password and a smart card, granting him a clearance with a Read label of Password and Token and a Write label of Password and Token. What level of access does the user have to the volume?

- A. No access
- B. Read only access
- C. Write only access
- D. Read and Write access

Answer: D

Question: 7

When accessing iManager 2.5, you authenticate as AHammer.BERLIN.EMA. The roles you need are not displayed. How can you fix this problem?

- A. Restart Tomcat on the server.
- B. Restart Apache Web Server on the server.
- C. Delete all existing roles and then manually rebuild them.
- D. Close the browser window, then reauthenticate as AHammer.
- E. Check the Tomcat configuration file to make sure iManager has been configured correctly.
- F. Authenticate as admin to iManager and assign the missing roles to the AHammer user object.

Answer: F

Question: 8

How do you perform a Down-Server Upgrade?

- A. Use iManager 2.0 or later to complete the upgrade from a workstation.
- B. Use NetWare Deployment Manager to complete the upgrade from a workstation.
- C. Mount the OES NetWare Operating System CD; then select Novell > Install to begin the upgrade.
- D. Boot the server from the OES NetWare Operating System CD and manually execute INSTALL.BAT with the /UPGRADE switch.

Answer: D

Question: 9

On an OES NetWare server, you must restart the Tomcat service after installing a new iManager plug-in. How can you do this?

- A. At the server console, enter TC4RESTART.
- B. At the server console, enter TC4 /RESTART.
- C. At the server console, enter TOMCAT -RESTART.
- D. At the server console, enter TC4STOP; then enter TOMCAT4.
- E. At the server console, enter TOMCAT /STOP; then enter TOMCAT /START.

Answer: D

Question: 10

Which OES NetWare component enables script-based management of the network?

- A. NXBit Support

Exam Name:	Upgrading to Novell Open Enterprise Server for NetWare		
Exam Type:	Novell		
Exam Code:	50-701	Total Questions:	167

- B. bash Shell Support
- C. ZENworks Management Daemon
- D. Common Information Model Support

Answer: B

Question: 11

How many snapshots can exist on a particular stored-on pool?

- A. 10
- B. 50
- C. 100
- D. 250
- E. 500
- F. 1000

Answer: E

Question: 12

Where are the files for the Tomcat service located on an OES NetWare server?

- A. Sys:\Tc4
- B. Sys:\Ucs
- C. Sys:\Php5
- D. Sys:\Tomcat
- E. Sys:\System
- F. Sys:\Etc\Tomcat
- G. Sys:\System\Tomcat

Answer: D

Question: 13

Which password does the CIFS service on an OES NetWare server use, by default, to authenticate clients?

- A. NIS Password
- B. LDAP Password
- C. Simple Password
- D. Universal Password
- E. eDirectory Password

Answer: C

Question: 14

What is the role of the ARKCONFIG.XML file?

- A. It contains the interval for running Versioning jobs.
- B. It contains configuration settings for the Archive Server.
- C. It contains XML code for configuring an upgrade from Archive and Versioning Services 1.0.
- D. It contains XML configuration settings for the Archive and Versioning Services MySQL instance.

Answer: B

Question: 15

Exam Name:	Upgrading to Novell Open Enterprise Server for NetWare		
Exam Type:	Novell		
Exam Code:	50-701	Total Questions:	167

You've copied a file named userdata.iso to the root directory of the DATA volume on your OES NetWare server. You want to mount this ISO image as a volume. Which server console command will do this?

- A. MOUNT DATA:\USERDATA.ISO
- B. nss /Mount=DATA:\USERDATA.ISO
- C. nss /MountImage=DATA:\USERDATA.ISO
- D. nss /MountImageVolume=DATA:\USERDATA.ISO

Answer: D

Question: 16

You want to upgrade a NetWare 6 server with Support Pack 1 to OES NetWare. The server hardware uses dual Pentium II 400 MHz CPUs, 512 MB RAM, an 8 GB hard disk drive with a 200 MB DOS partition, and a USB mouse. Can this server be upgraded?

- A. Yes, the server meets all prerequisite requirements.
- B. No, OES NetWare requires PIII 750 MHz CPUs or later.
- C. No, the server's CPU is too slow and the hard disk drive is too small.
- D. No, the server's DOS partition is too small and USB mice aren't supported.
- E. No, the server doesn't have enough RAM and must have Support Pack 3 or later applied.
- F. No, the server's DOS partition is too small and must have Support Pack 5 or later applied.

Answer: F

Question: 17

The iSCSI SAN Storage Server patterned deployment makes the OES NetWare server an iSCSI _____. Answer:

- A. TARGET

Answer: A

Question: 18

A server that accesses iSCSI shared storage is called an iSCSI _____. Answer:

- A. INITIATOR

Answer: A

Question: 19

Which Novell Modular Authentication Services component is assigned to a user object to represent the amount of trust you have in that user?

- A. Tokens
- B. Clearances
- C. Categories
- D. Security Labels

Answer: B

Question: 20

You want to create a pool snapshot of the DATA_POOL on your server. You want to use DATA_POOL_S as the stored on pool. You want to name the snapshot DATA_POOL_S1. What command could you use from the server console to do this?

Exam Name:	Upgrading to Novell Open Enterprise Server for NetWare		
Exam Type:	Novell		
Exam Code:	50-701	Total Questions:	167

- A. mm snap DATA_POOL DATA_POOL_S DATA_POOL_S1 create
- B. mm snap create DATA_POOL DATA_POOL_S DATA_POOL_S1
- C. mm snap DATA_POOL_S1 DATA_POOL DATA_POOL_S create
- D. mm snap create DATA_POOL_S DATA_POOL DATA_POOL_S1
- E. mm snap create DATA_POOL DATA_POOL_S1 DATA_POOL_S

Answer: B

Question: 21

What is the recommended size for your server's DOS partition?

- A. 500 MB + the amount of RAM in the system
- B. 200 MB + the amount of RAM in the system
- C. 200 MB + the amount of RAM in the system + the amount of L1 cache in the system
- D. 300 MB + the amount of RAM in the system + the amount of hard disk cache in the system

Answer: A

Question: 22

If your OES NetWare server's DNS name is da2.da.com, what URL would you use to access Tomcat Admin?

- A. http://da2.da.com/tomcat/admin
- B. https://da2.da.com:2200/tomcat/
- C. https://da2.da.com/tomcat/admin
- D. https://da2.da.com/tomcat/admin/
- E. https://da2.da.com:8009/tomcat/admin/

Answer: D

Question: 23

To balance the load in your network, you want to split heavily used volume DATA, an NSS volume, on DA1. You decide to split the volume at the DATA:\USERS\CONTRACTORS subdirectory. The destination volume is an NSS volume on DA2. Given that both servers are OES NetWare servers in the same DFS Management context, can this be done?

- A. No, you can't split a volume at the subdirectory level.
- B. No, you can't split an NSS volume to another NSS volume.
- C. No, the servers must reside in different DFS Management Contexts.
- D. Yes, the prerequisite requirements for this move request have been met.
- E. No, split operations for NSS volumes can only occur between servers in different contexts.

Answer: D

Question: 24

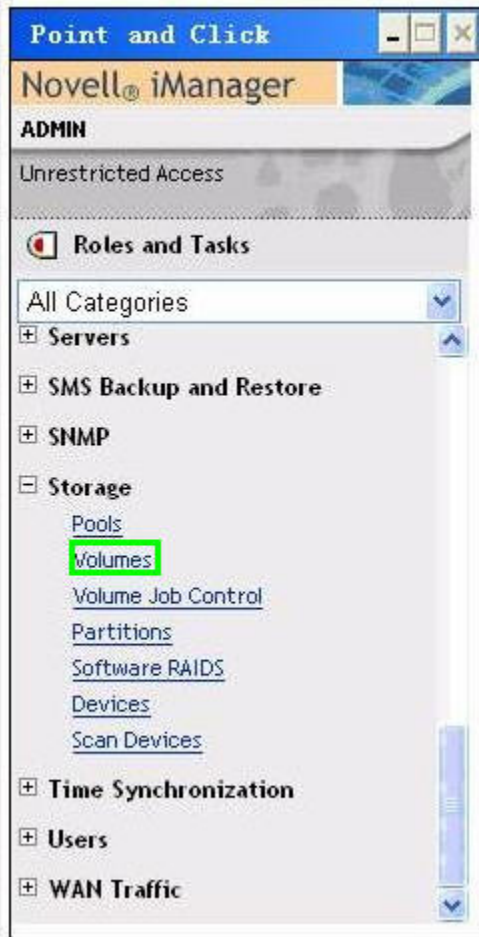
Click the Point and Click button to begin.
Click the iManager task used to move and split NSS volumes.

Exam Name:	Upgrading to Novell Open Enterprise Server for NetWare		
Exam Type:	Novell		
Exam Code:	50-701	Total Questions:	167



Answer:

Exam Name:	Upgrading to Novell Open Enterprise Server for NetWare		
Exam Type:	Novell		
Exam Code:	50-701	Total Questions:	167



Question: 25

Which server console command is used to enable SMB signing for the CIFS service running on an OES NetWare server?

- A. CIFS SIGNING ENABLE
- B. CIFS SIGNATURES ENABLE
- C. ENABLE CIFS SIGNATURES
- D. CIFS /Signatures=Enable
- E. CIFS SMB SIGNING ENABLE

Answer: B

Question: 26

Which are Novell Modular Authentication Services (NMAS) phases? (Choose 2.)

- A. Device Removal
- B. Connection Close
- C. Initial Connection
- D. User Identification
- E. Socket Establishment

Answer: A, D

Exam Name:	Upgrading to Novell Open Enterprise Server for NetWare		
Exam Type:	Novell		
Exam Code:	50-701	Total Questions:	167

Question: 27

A request has been received by the Apache Web Server that requires processing by the Tomcat service running on your OES NetWare server. Which module is used by Apache to open a socket to the Tomcat service to process the request?

- A. mod_jk
- B. mod_php5
- C. mod_tomcat
- D. mod_tcsock
- E. tomcat_socket

Answer: A

Question: 28

A server that functions as a disk controller for an iSCSI shared disk system is called an iSCSI _____ . Answer:

- A. TARGET

Answer: A

Question: 29

Your organization has three eDirectory trees; one for each functional group in your organization. One tree runs on NetWare 5.1 servers; the others run on NetWare 6.0 servers. You've just installed a high-end OES NetWare server and want to consolidate all the servers in the disparate trees to the new server using the Novell NetWare Server Consolidation Utility. Can this be done?

- A. Yes, the network meets the prerequisite requirements.
- B. No, the Server Consolidation Utility can't consolidate servers residing in different trees.
- C. No, NetWare 6.0 servers can't be consolidated to an OES NetWare server using the Server Consolidation Utility.
- D. No, NetWare 5.1 servers can't be consolidated to an OES NetWare server using the Server Consolidation Utility.
- E. No, you can't consolidate servers of mixed versions to an OES NetWare server using the Server Consolidation Utility.

Answer: A

Question: 30

You are migrating a NetWare 5.1 server to OES NetWare. The source server name is DA36 and is located in FINANCE.SLC.DA in the DA-TREE. You install the pre-migration OES NetWare server as DA36 located in .DA in the TEMP-TREE. Why will the migration fail?

- A. The source tree name must be the same as the destination tree name.
- B. The source server name can't be the same as the destination server name.
- C. The source server context must be the same as the destination server context.
- D. You must first upgrade the NetWare 5.1 server to NetWare 6.0; then migrate it to OES NetWare.
- E. The source tree name and the server context must be the same as the destination tree name and server context.

Answer: B

Question: 31

Exam Name:	Upgrading to Novell Open Enterprise Server for NetWare		
Exam Type:	Novell		
Exam Code:	50-701	Total Questions:	167

You've loaded DSTRACE.NLM at your server console. You configured DSTRACE to trace Backlinker events (BLNK). You've gathered the information you required and now need to stop tracing Backlinker events while leaving DSTRACE.NLM loaded. Which command will do this?

- A. UNLOAD BLNK
- B. DSTRACE -BLNK
- C. DSTRACE BLNK OFF
- D. DSTRACE BLNK STOP
- E. DSTRACE BLNK OFF STAY RESIDENT

Answer: B

Question: 32

While configuring the CIFS service in iManager, which parameter specifies whether the server will use workgroup or domain authentication?

- A. Mode
- B. Oplocks
- C. DFS Support
- D. Authentication Type
- E. Primary Domain Controller Name

Answer: A

Question: 33

The primary function of your organization's network is to provide file and print services from within your corporate firewall. Your organization does not use multiple databases for user accounts. Which tree design is most appropriate?

- A. A single flat-hierarchy tree.
- B. Multiple flat-hierarchy trees, with one tree per functional group.
- C. Multiple pyramid-based trees, with one tree per geographic location.
- D. A single pyramid-based tree organized by geographic location or functional group.

Answer: D

Question: 34

Which utility is used to set the DFS Management Context?

- A. NSSMU
- B. iManager
- C. iMonitor
- D. ConsoleOne
- E. Remote Manager
- F. NetWare Administrator

Answer: D

Question: 35

Which RAID level stripes data across three or more hard disk drives while also evenly distributing parity information across all drives in the array?

- A. RAID0
- B. RAID1
- C. RAID3

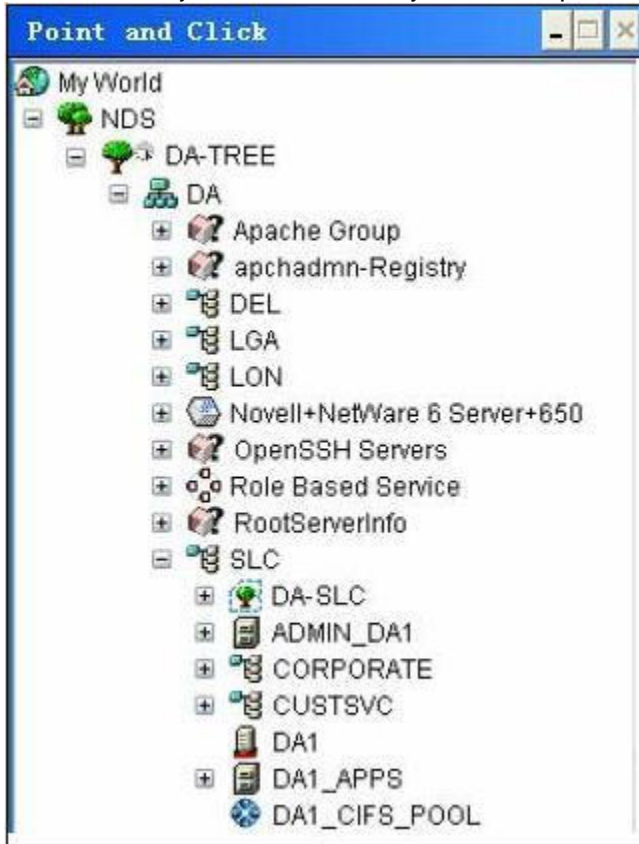
Exam Name:	Upgrading to Novell Open Enterprise Server for NetWare		
Exam Type:	Novell		
Exam Code:	50-701	Total Questions:	167

- D. RAID5
- E. RAID0+1

Answer: D

Question: 36

Click the Point and Click button to begin.
Click on the object in the eDirectory tree that represents a CIFS domain.



Answer:

Exam Name:	Upgrading to Novell Open Enterprise Server for NetWare		
Exam Type:	Novell		
Exam Code:	50-701	Total Questions:	167



Question: 37

While running a migration from NetWare 6 to OES NetWare, trustee assignments are not restored properly and an 0xfffffb error message is displayed. What is the cause of this problem?

- A. Data on the source volume is corrupt.
- B. You must use Migration Wizard 6.5 instead of Migration Wizard 8.1.
- C. You didn't update the server's IP address in all the necessary files.
- D. You must disable burst mode for the Novell Client on the workstation.

Answer: C

Question: 38

You've created a share named SHARED for the SHARED directory on the USERS volume on your DA1-W CIFS server. What UNC path should be used to access this share from a Windows workstation?

- A. \\DA1-W\SHARED
- B. \\DA1-W\SHAREDDIR
- C. \\DA1-W\USERS\SHARED
- D. \\DA1-W\USERS:\SHARED

Answer: B

Question: 39

Which instance of Apache Web Server running on an OES NetWare server is used to manage other services on the server, such as iFolder and iManager?

Exam Name:	Upgrading to Novell Open Enterprise Server for NetWare		
Exam Type:	Novell		
Exam Code:	50-701	Total Questions:	167

- A. Public Instance
- B. Management Instance
- C. TCP Wrapper Instance
- D. Administration Instance

Answer: D

Question: 40

What is the name of the file used to install most Novell Modular Authentication Services login methods?

- A. setup.exe
- B. config.txt
- C. config.ini
- D. install.txt
- E. products.ini

Answer: B

Question: 41

After completing a Remote Upgrade to OES NetWare on a server in a multi-server tree, which DSREPAIR operations should you run? (Choose 3.)

- A. Import Remote Schema
- B. Time Synchronization
- C. Unattended Full Repair
- D. Post NetWare 5 Schema Update
- E. Report Synchronization Status
- F. Designate This Server as the New Master Replica

Answer: B, C, E

Question: 42

What is the function of the rbsTask object?

- A. Represents a leaf object used for ACL assignments.
- B. Represents a leaf object that holds a specific function.
- C. Specifies the tasks that users (members) are authorized to perform.
- D. Represents a container object that holds rbsTask and rbsBook objects.
- E. Represents a container object that holds all RBS Role and Module objects.

Answer: B

Question: 43

Which directory is the document root for the Public Instance of Apache Web Server running on an OES NetWare server?

- A. sys:/etc/htdocs
- B. sys:/apache2/htdocs
- C. sys:/adminsrv/htdocs
- D. sys:/srv/httpd/htdocs
- E. sys:/system/apache2/htdocs

Answer: B

Exam Name:	Upgrading to Novell Open Enterprise Server for NetWare		
Exam Type:	Novell		
Exam Code:	50-701	Total Questions:	167

Question: 44

You're installing a new OES NetWare server. The hardware you are using has dual PIII 1.13 GHz CPUs, 384 MB of RAM, and a 40 GB SCSI SCA hard disk drive. Will the installation be successful?

- A. Yes, the hardware meets all prerequisites.
- B. No, OES NetWare requires 512 MB or more RAM.
- C. No, OES NetWare doesn't support multiprocessor systems.
- D. No, OES NetWare doesn't support SCSI SCA hard disk drives.
- E. No, OES NetWare requires an 80 GB or larger hard disk drive.

Answer: B

Question: 45

While performing a consolidation project from NetWare 5.1 to OES NetWare, you encounter SMDR communication errors and the consolidation fails. What is the resolution to this problem?

- A. Enable binary comparison.
- B. Wait for eDirectory to synchronize.
- C. Verify that NDPSM.NLM has been loaded on both servers.
- D. Migrate the source server to NetWare 6.0 using the Migration Wizard first; then consolidate the server to OES NetWare.
- E. Place an entry for the source server in the destination server's HOSTS file; then place an entry for the destination server in the source server's HOSTS file.

Answer: E

Question: 46

Which NSS volume attribute allows you to electronically overwrite deleted and purged data areas to prevent unauthorized users from using a disk editor to access deleted files?

- A. Salvage
- B. Data Shredding
- C. Modified File List
- D. Snapshot - File Level
- E. Flush Files Immediately

Answer: B

Question: 47

Which files are created in SYS:\ETC when a server has been designated as host for the NSS VLDB service? (Choose 3.)

- A. VLDB.DAT
- B. VLDB.NLM
- C. VLDB.CFG
- D. VLRPR.LOG
- E. VLDB.CONF
- F. VLDBCFG.DAT

Answer: A, D, F

Question: 48

Exam Name:	Upgrading to Novell Open Enterprise Server for NetWare		
Exam Type:	Novell		
Exam Code:	50-701	Total Questions:	167

Click the Point and Click button to begin. You need to run a full unattended repair on the eDirectory database on the DA1 server. Click the option you would use in iMonitor to do this.



Answer:



Question: 49

While upgrading a NetWare 6 server to OES NetWare, the following error message has been displayed on the server: "Error Binding IP to AMD_PC11. Make sure this card's IP address is not already in use."

The server has hung and you can't complete the upgrade. What caused this to happen?

- A. An incorrect board name has been assigned to the network interface.
- B. The wrong .LAN driver has been loaded for the server's network board.
- C. The same IP address is being assigned twice to the same network board.
- D. The latest support pack has not been installed on the NetWare 6 server.
- E. Your server's startup files were stored in a directory named something other than "C:\Nwserver".

Answer: E

Question: 50

If a NetWare 4.1 server exists in the tree where you plan to install an OES NetWare server, what must you do?

- A. Remove the server from the tree.
- B. Use the View and Update NDS option in Deployment Manager.
- C. Use the Extend the Core Schema option in Deployment Manager.
- D. Use the Prepare for New eDirectory option in Deployment Manager.

Exam Name:	Upgrading to Novell Open Enterprise Server for NetWare		
Exam Type:	Novell		
Exam Code:	50-701	Total Questions:	167

E. Use the Generate GUIDs on NetWare 4 Servers option in Deployment Manager.

Answer: A

Question: 51

You are a regional network administrator performing a Remote Upgrade to OES NetWare on a NetWare 5.1 server. The server has 512 MB of RAM, an 80 GB hard disk drive with a 1 GB DOS partition, and Support Pack 6 installed. Your user object has the Supervisor right to the container where the server resides and Browse rights to the root of the tree. Will the upgrade be successful?

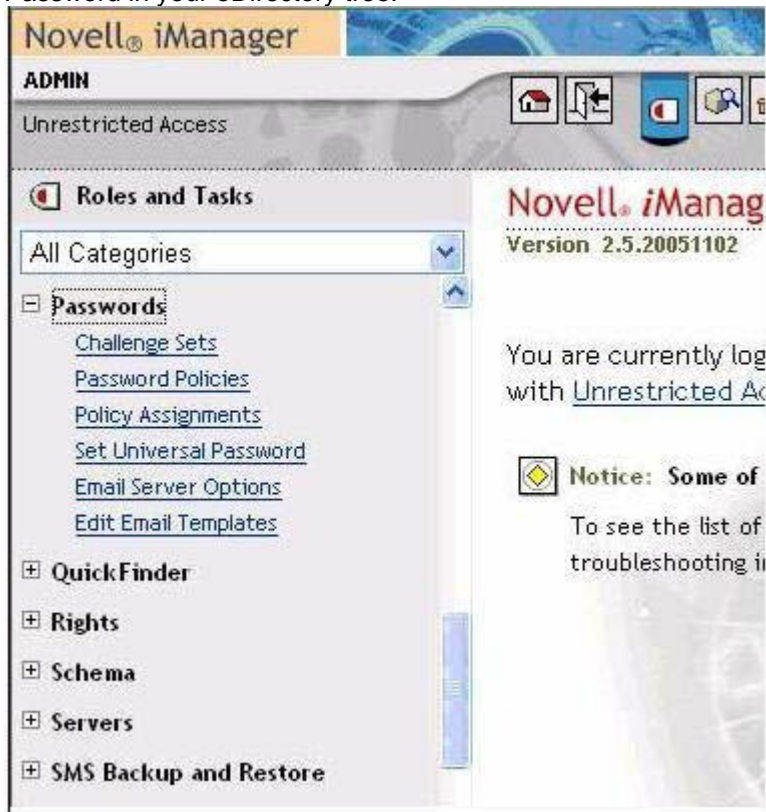
- A. Yes, the system meets all prerequisites.
- B. No, you must have the Supervisor right to the root of the tree.
- C. No, you must increase the amount of RAM installed in the server.
- D. No, you must increase the size of the DOS partition is too small.
- E. No, you can't perform a Remote Upgrade on a NetWare 5.1 server. You must use an In-Place Upgrade.

Answer: B

Question: 52

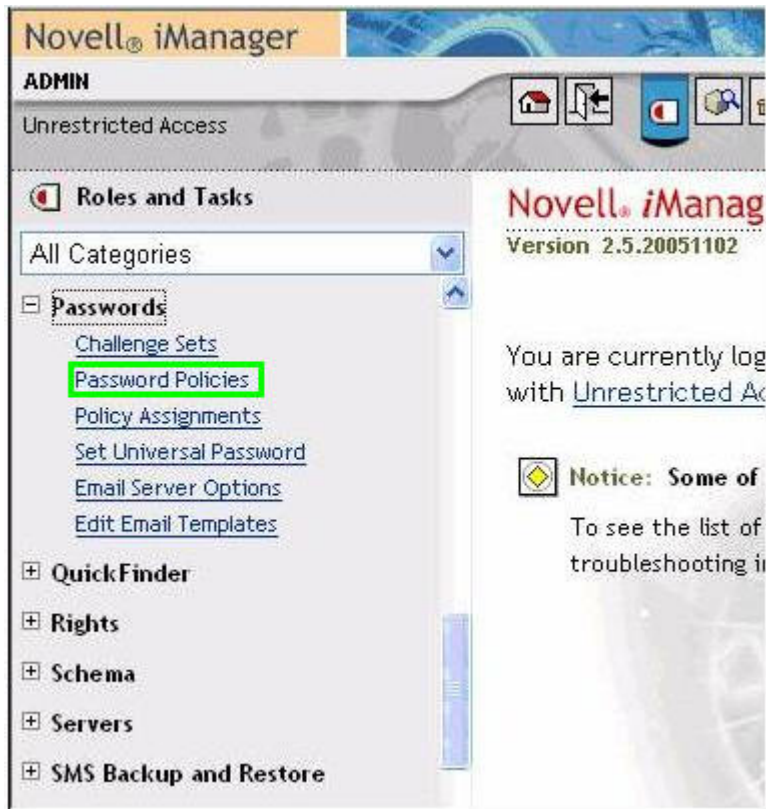
Click the Point and Click button to begin.

Click on the task within the Passwords role in iManager that you would use to enable Universal Password in your eDirectory tree.



Answer:

Exam Name:	Upgrading to Novell Open Enterprise Server for NetWare		
Exam Type:	Novell		
Exam Code:	50-701	Total Questions:	167



Question: 53

What is the function of the rbsCollection object?

- A. Represents a leaf object used for ACL assignments.
- B. Represents a leaf object that holds a specific function.
- C. Represents a container object that holds rbsTask and rbsBook objects.
- D. Specifies the tasks that users who are members are authorized to perform.
- E. Represents a container object that holds all RBS Role and Module objects.

Answer: E

Question: 54

You've just activated a pool snapshot named DATA_POOL_S3. The volume in the original pool is named DATA. What is the default name of the volume in the activated pool snapshot?

- A. DATA
- B. DATA_SV
- C. DATA_S3
- D. DATA_POOL_S3V
- E. DATA_POOL_S3_DATA

Answer: B

Question: 55

Which products are installed in a Pre-Migration Server patterned deployment? (Choose 3.)

- A. UDDI

Exam Name:	Upgrading to Novell Open Enterprise Server for NetWare		
Exam Type:	Novell		
Exam Code:	50-701	Total Questions:	167

- B. MySQL
- C. Tomcat 4
- D. eDirectory
- E. Remote Manager
- F. Storage Management Services

Answer: D, E, F

Question: 56

Tomcat won't start on your OES NetWare server. When you check the logger screen, you see the following error:

"tccheck: LDAP is not up yet; waiting..."

How can you resolve this problem? (Choose 2.)

- A. Restart Tomcat.
- B. Reinstall Tomcat.
- C. Reinstall Apache Web Server.
- D. Uninstall Tomcat 4 and install Tomcat 5.
- E. Verify that the LDAP Server object's TSL/SSL port is set to 636.
- F. Delete all web applications from the Sys:\Tomcat4\Webapps directory.
- G. Verify that Disable SSL Port is not marked in the properties of the LDAP Server object.

Answer: E, G

Question: 57

To improve your OES NetWare server's disk performance, you decide to split part of the heavily used DATA volume, a traditional volume, to a new NSS volume on the same server. Can you do this?

- A. Yes, all prerequisite requirements for volume splits have been met.
- B. No, traditional volumes can't be split.
- C. No, a volume split requires the new volume be created on a remote server.
- D. No, splitting a traditional volume requires the new volume to be another traditional volume.

Answer: B

Question: 58

You are planning a consolidation of two NetWare 5.1 servers to an OES NetWare server. You're using a Windows XP Home workstation with Novell Client 4.9 installed. Each server has the latest Support Pack installed. Will this consolidation succeed?

- A. Yes, the systems meet all prerequisite requirements.
- B. No, you can't consolidate NetWare 5.1 servers to OES NetWare.
- C. No, the Server Consolidation Utility is not compatible with Windows XP Home.
- D. No, the Server Consolidation Utility is incompatible with Novell Client version 4.9.
- E. No, you must uninstall all Support Packs from the source servers before consolidating them.

Answer: C

Question: 59

When working with the IP Address Management utility on OES NetWare, which type of IP address assignment will configure a service to use the first IP address bound on the server?

- A. Bind
- B. Wildcard

Exam Name:	Upgrading to Novell Open Enterprise Server for NetWare		
Exam Type:	Novell		
Exam Code:	50-701	Total Questions:	167

- C. Specific
- D. Default IP

Answer: D

Question: 60

You want to set up an iSCSI shared disk system on your OES NetWare server. The server has Support Pack 1 installed and is connected to the Ethernet network using dual, load-balanced Gigabit Ethernet network adapters. The storage to be used for the iSCSI shared disk system is contained within a Network-Attached Storage (NAS) device that is connected to the same Ethernet network segment. Will this configuration work?

- A. Yes, all iSCSI prerequisites have been met.
- B. No, you must install Support Pack 2 or later on the server.
- C. No, iSCSI can't be used with load-balanced network boards.
- D. No, iSCSI can only be implemented on a NetWare server with directly-attached storage devices.

Answer: D

Question: 61

Which product can only be installed after a Remote Upgrade to OES NetWare is complete?

- A. MySQL
- B. iPrint
- C. iFolder
- D. NetWare FTP Server
- E. Apache Web Server 2
- F. Novell Cluster Services

Answer: F

Question: 62

The user who creates a CIFS domain on an OES NetWare server is automatically made a member of which group within the domain object in the eDirectory tree?

- A. Domain Users
- B. Domain Admins
- C. Domain Groups
- D. Domain Guests
- E. Domain Controllers

Answer: B

Question: 63

Given that your workstation's CD drive is assigned drive letter D, which is the correct file name and location for the NetWare Deployment Manager executable?

- A. D:\NWDEPLOY.EXE
- B. D:\OESNWDEPLOY.EXE
- C. D:\TOOLS\NWDEPLOY.EXE
- D. D:\INSTALL\NWDEPLOY.EXE
- E. D:\PRODUCTS\NWDEPLOY.EXE

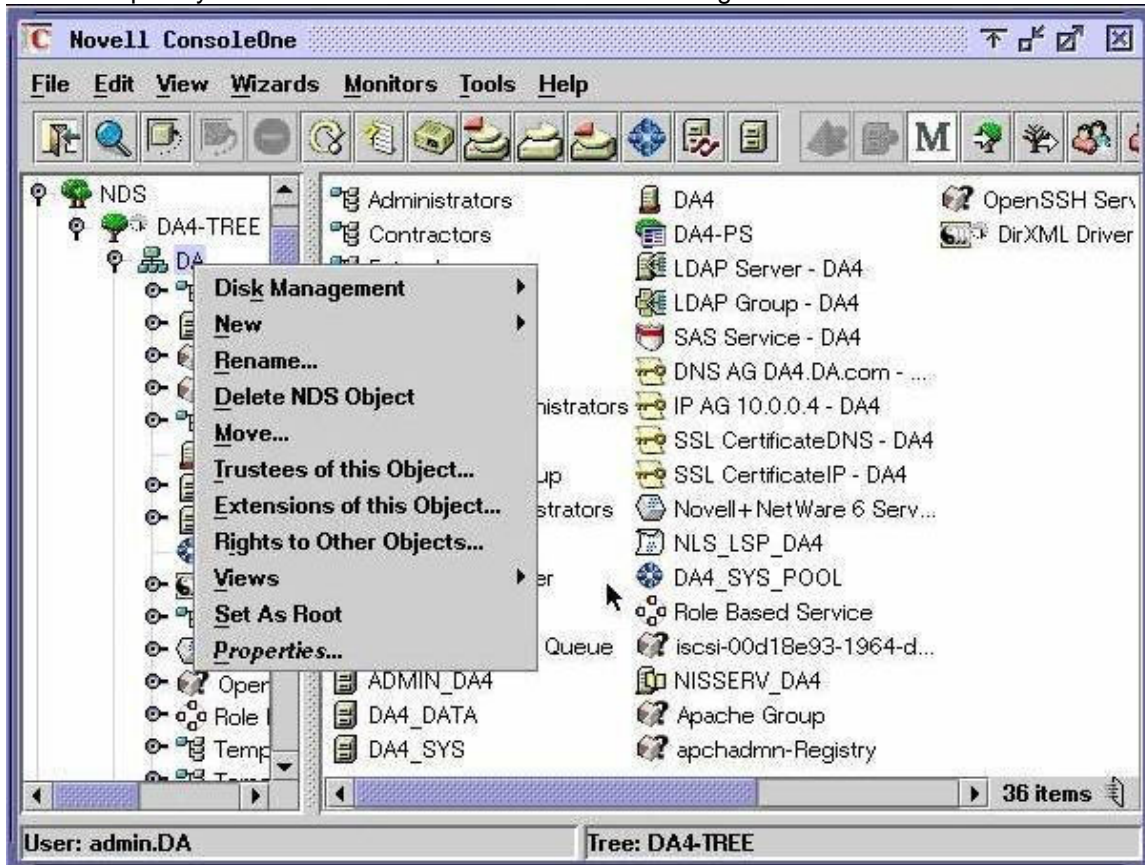
Answer: A

Exam Name:	Upgrading to Novell Open Enterprise Server for NetWare		
Exam Type:	Novell		
Exam Code:	50-701	Total Questions:	167

Question: 64

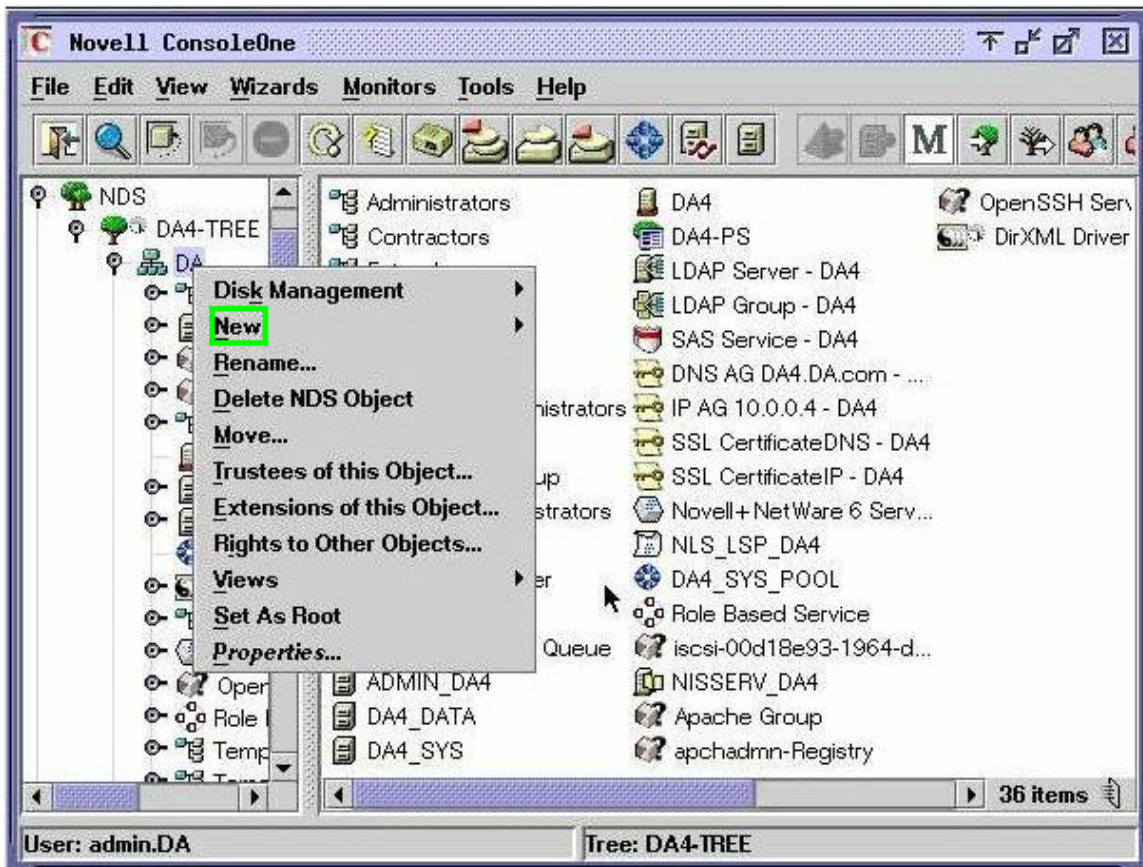
Click the Point and Click button to begin.

Click the option you would select to create a new DFS Management Context in O=DA.



Answer:

Exam Name:	Upgrading to Novell Open Enterprise Server for NetWare		
Exam Type:	Novell		
Exam Code:	50-701	Total Questions:	167



Question: 65

Which eDirectory object in the Security container is used to create and manage Novell Modular Authentication Services login sequences?

- A. CA
- B. KAP
- C. Login Policy
- D. Security Policy
- E. Authorized Login Methods

Answer: C

Question: 66

A volume on your OES NetWare server has a security label of Password and Token. A user in your tree has received a clearance upon login that granted her an authentication grade of Password. What level of access does the user have to the volume?

- A. No access
- B. Read only access
- C. Write only access
- D. Read and Write access

Answer: A

Question: 67

Exam Name:	Upgrading to Novell Open Enterprise Server for NetWare		
Exam Type:	Novell		
Exam Code:	50-701	Total Questions:	167

While upgrading a NetWare 5.1 server to OES NetWare, you see "Unable to Copy File" error messages on the screen. After the upgrade is complete, you can't boot the operating system. Which are the most probable causes of this problem? (Choose 2.)

- A. Files in the C:\Nwserver directory were flagged Read-Only.
- B. An obsolete support pack was installed on the NetWare 5.1 server.
- C. The .HAM storage driver was out of date on the NetWare 5.1 server.
- D. The server's BIOS needs to be updated to the latest firmware version.
- E. The .CDM hard disk device driver was out of date on the NetWare 5.1 server.

Answer: A, D

Question: 68

Given that your workstation's CD drive is assigned drive letter D, what is the Migration Wizard 8.1 location and filename?

- A. D:\MIGRTWZD.EXE
- B. D:\MIGRTWZD81.EXE
- C. D:\PRODUCTS\SCMT.EXE
- D. D:\INSTALL\MIGRTWZD81.EXE
- E. D:\PRODUCTS\MGRTWZD\SCMT.EXE
- F. D:\PRODUCTS\MIGRATION_UTILITIES\SCMT.EXE

Answer: F

Question: 69

Which command can be entered at the server console to view iSCSI initiator properties?

- A. ISCSI INFO
- B. ISCSITAR INFO
- C. ISCSIINIT INFO
- D. ISCSI INITIATOR INFO

Answer: C

Question: 70

Your OES NetWare server uses an NSS pool named DATA_POOL that is composed of a single disk partition labeled DATA_PART. The DATA volume resides in the DATA_POOL. You need to verify data on the volume and pool using the VERIFY utility. Which command must you use from the server console to do this?

- A. nss /Verify DATA
- B. nss /Verify=DATA_POOL
- C. nss /VolumeVerify=DATA
- D. nss /PoolVerify=DATA_POOL
- E. nss /PartitionVerify=DATA_PART

Answer: D

Question: 71

Click the Point and Click button to begin.

Which option should you select to create a new snapshot of the SYS pool?

Exam Name:	Upgrading to Novell Open Enterprise Server for NetWare		
Exam Type:	Novell		
Exam Code:	50-701	Total Questions:	167

Novell iManager
Collection Owner Access

User: admin.DA.DA8-TREE

Storage Management > Pools

Pool Management

Create and manage storage pools to efficiently use all free space. Increase the storage space allocated to the pool to meet demand. Enable the pool snapshot feature to preserve point-in-time views of data pools and to support data recovery and backup.

Server: DA8.DA

Pools:	Details:
<p>New...</p> <p>Delete</p> <p>Rename...</p> <p>Activate</p> <p>Deactivate</p> <p>Increase size...</p> <p>Snapshot...</p> <p>Update eDirectory</p> <p>Deleted Volumes...</p> <p>Offline</p>	<p>Name: SYS</p> <p>Segments: 0x7</p> <p>Number of Segments: 1</p> <p>State: Active</p> <p>LSS Type: ZLSS</p> <p>Share State: Not Sharable for Clustering</p> <p>Volumes: DATA</p> <p>Number of Volumes: 2</p>

Left sidebar menu items:

- Roles and Tasks
 - Novell Certificate Access
 - Novell Certificate Server
 - Nsure Audit
 - Partition and Replicas
 - Rights
 - Schema
 - Servers
 - SMS
 - SNMP
 - Storage
 - Devices
 - Move / Split Job Control
 - Pools
 - Scan For Devices
 - Software RAIDS
 - Volumes
 - UDDI Administration
 - UDDI Inquiry
 - UDDI Publish & User Access Control

To Read the [Whole Q&As](#), please purchase the [Complete Version](#) from [Our website](#).

Trying our product !

- ★ **100%** Guaranteed Success
- ★ **100%** Money Back Guarantee
- ★ **365 Days** Free Update
- ★ **Instant Download** After Purchase
- ★ **24x7** Customer Support
- ★ Average **99.9%** Success Rate
- ★ More than **69,000** Satisfied Customers Worldwide
- ★ Multi-Platform capabilities - **Windows, Mac, Android, iPhone, iPod, iPad, Kindle**

Need Help

Please provide as much detail as possible so we can best assist you.

To update a previously submitted ticket:



 One Year Free Update <p>Free update is available within One Year after your purchase. After One Year, you will get 50% discounts for updating. And we are proud to boast a 24/7 efficient Customer Support system via Email.</p>	 Money Back Guarantee <p>To ensure that you are spending on quality products, we provide 100% money back guarantee for 30 days from the date of purchase.</p>	 Security & Privacy <p>We respect customer privacy. We use McAfee's security service to provide you with utmost security for your personal information & peace of mind.</p>
---	---	--

[Guarantee & Policy](#) | [Privacy & Policy](#) | [Terms & Conditions](#)

Any charges made through this site will appear as Global Simulators Limited.

All trademarks are the property of their respective owners.

Copyright © 2004-2015, All Rights Reserved.