

100% Money Back
Guarantee

Vendor:CheckPoint

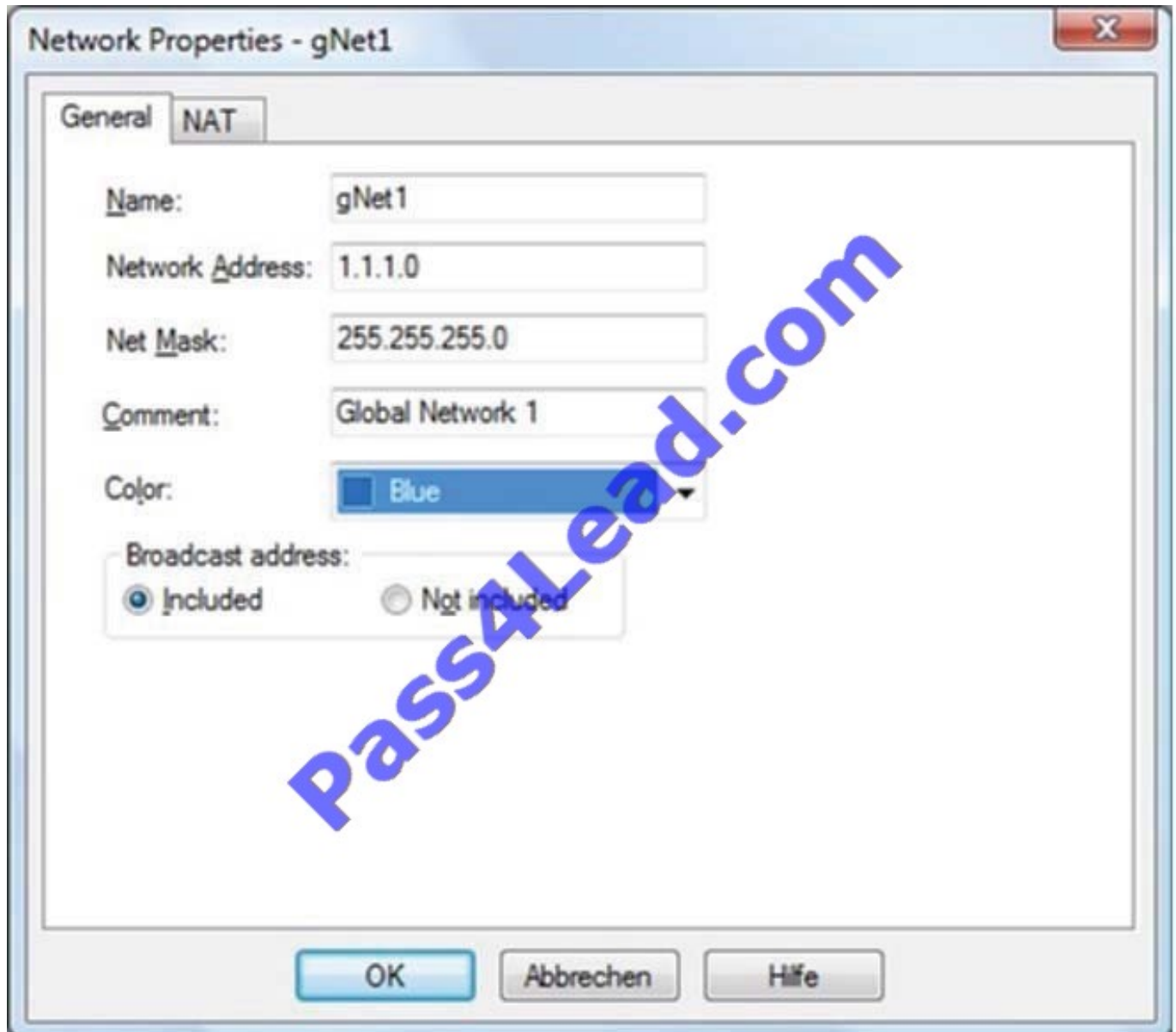
Exam Code:156-815

Exam Name:Check Point Certified Managed Security
Expert NGX

Version:Demo

QUESTION 1

You are the administrator at a MSP One of your customers has asked you to follow a strict naming policy Due to requirements, you have defined some Global rules that are assigned specifically to this customer



Which of the following statements is TRUE?

- A. To rename a Global object, open it and configure a new name for it This works for all Global objects
- B. To rename a Global object, open it and configure a new name for it This is not possible for Check Point objects, but only for nodes or networks
- C. If a Global object needs to be renamed, it is only possible in the corresponding CMA
- D. Global objects cannot be renamed If this is necessary, the object needs to be deleted and newly defined

Correct Answer: D

QUESTION 2

What type of user does the icon signify?



- A. Provider Superuser
- B. Customer Superuser
- C. Custom Administrator
- D. Customer Manager

Correct Answer: B

QUESTION 3

In Multi-Domain Management with Provider-1 R71, how many management modules can be configured for a particular customer?

- A. 2 (CMA and CMA-HA)
- B. 3 (CMA, CMA-HA1 and CMA-HA2/Security Mgmt-HA)
- C. unlimited
- D. 1 (CMA)

Correct Answer: B

QUESTION 4

How many separate CLM's can one MLM manage?

- A. Unlimited
- B. 500
- C. 200

D. 250

Correct Answer: D

QUESTION 5

When does a SIC certificate expire for CMA/MDS?

A. After 3 years

B. After 5 years

C. The interval is configurable

D. After 1 year

Correct Answer: B

QUESTION 6

Which command is used to restore Provider-1 MDS?

A. recover

B. mds_restore

C. cprestore

D. Restore

Correct Answer: D

QUESTION 7

In a Multi-Domain Management with Provider-1 R71 deployment, a Management Server can be configured as a backup for the .

A. Primary CMA not backed up by a Secondary CMA

B. Secondary MDS

C. Primary MDS

D. Primary MDS and a Secondary CMA

Correct Answer: A

QUESTION 8

Which command do you use to import data collected from a Security Management Server into a CMA created within a Multi-Domain Management with Provider-1 environment?

- A. upgrade_import
- B. mdscmd import
- C. This can only be done through the MDG, not at a command line
- D. cma_migrate

Correct Answer: D

QUESTION 9

Which of the following is the correct syntax for mirroring all CMA's from FirstMDS to SecondMDS?

- A. cma_mirror_all -s FirstMDS -t SecondMDS
- B. p1shell/mirrorcma -s FirstMDS -t SecondMDS -c 2
- C. mdscmd mirrorcma -s FirstMDS -t SecondMDS -c 2
- D. mirrorcma -s FirstMDS -t SecondMDS -c 2

Correct Answer: C

QUESTION 10

In a Multi-Domain Management with Provider-1 environment the relationship between a CMA and a CLM is analogous to what relationship in a non-Provider-1 environment?

- A. Security Management server to a Security Gateway
- B. Security Management server to a Log server
- C. LDAP repository to a User Authority Gateway
- D. Security Gateway to a Log Server

Correct Answer: B

QUESTION 11

Which of the following matches the icon?



- A. MDS Manager
- B. Provider-1 Superuser
- C. MDS Container
- D. CMA

Correct Answer: C

QUESTION 12

Which of the following systems would meet the MINIMUM requirements for an MDS?

- A. SecurePlatform, 10 GB hard drive
- B. SecurePlatform, 2-GB hard drive, 8 MB memory
- C. Solaris 9, 4-GB hard drive, 1 GB memory
- D. Linux RHEL 5, 24 kernel, 4-GB hard drive, 4-GB memory

Correct Answer: A

To Read the [Whole Q&As](#), please purchase the [Complete Version](#) from [Our website](#).

Try our product !

100% Guaranteed Success

100% Money Back Guarantee

365 Days Free Update

Instant Download After Purchase

24x7 Customer Support

Average **99.9%** Success Rate

More than **800,000** Satisfied Customers Worldwide

Multi-Platform capabilities - **Windows, Mac, Android, iPhone, iPod, iPad, Kindle**

Need Help

Please provide as much detail as possible so we can best assist you.

To update a previously submitted ticket:



| | | |
|---------------------------------------------------------------------------------------------------------------------------------------------------------------------------------------------------------------------------------------------------------------------------------------------------------------------------------|-------------------------------------------------------------------------------------------------------------------------------------------------------------------------------------------------------------------------------------------------------------|------------------------------------------------------------------------------------------------------------------------------------------------------------------------------------------------------------------------------------------------------------------------------------|
|  <p>One Year Free Update Free update is available within One Year after your purchase. After One Year, you will get 50% discounts for updating. And we are proud to boast a 24/7 efficient Customer Support system via Email.</p> |  <p>Money Back Guarantee To ensure that you are spending on quality products, we provide 100% money back guarantee for 30 days from the date of purchase.</p> |  <p>Security & Privacy We respect customer privacy. We use McAfee's security service to provide you with utmost security for your personal information & peace of mind.</p> |
|---------------------------------------------------------------------------------------------------------------------------------------------------------------------------------------------------------------------------------------------------------------------------------------------------------------------------------|-------------------------------------------------------------------------------------------------------------------------------------------------------------------------------------------------------------------------------------------------------------|------------------------------------------------------------------------------------------------------------------------------------------------------------------------------------------------------------------------------------------------------------------------------------|

Any charges made through this site will appear as Global Simulators Limited.

All trademarks are the property of their respective owners.