

100% Money Back
Guarantee

Vendor:Riverbed

Exam Code:199-01

Exam Name:Riverbed Certified Solutions Professional

Version:Demo

QUESTION 1

When deploying Interceptor appliances in a parallel cluster what feature must be disabled to ensure packet redirection upon failure?

- A. Fail-to-wire.
- B. Connection forwarding.
- C. Fail-to-block.
- D. Link State Propagation.
- E. WCCP.

Correct Answer: A

QUESTION 2

What is required to be configured on a Steelhead appliance in order to work with an Interceptor appliance?

- A. Connection Forwarding
- B. Peering rules
- C. Fixed-target rules
- D. Pass-through rules
- E. Nothing needs to be configured since this is all automated

Correct Answer: A

QUESTION 3

Your Steelhead appliance deployment includes users accessing the Internet from branch offices with the traffic being back-hauled to the data center before going out to the Internet. However, HTTP latency optimization does not appear to be very effective, and in certain cases, is slower than without optimization. What settings might help with this Internet-bound traffic?

- A. Riverbed recommends you turn off URL Learning and Parse-and-Prefetch and only enable OPT
- B. Riverbed recommends you enable URL Learning and Parse-and-Prefetch and turn off OPT
- C. Riverbed recommends you turn off URL Learning and only enable Parse-and-Prefetch and OPT
- D. Riverbed recommends you turn off URL Learning, Parse-and-Prefetch, and OPT
- E. Riverbed recommends you enable URL Learning, Parse-and-Prefetch, and OPT

Correct Answer: A

QUESTION 4

What action is taken by the Interceptor if a connection does not match a configured load balance rule and the default pool is empty?

- A. The connection is forwarded for auto-discovery.
- B. The connection is passed-through.
- C. The connection is rejected.
- D. The connection is reset.

Correct Answer: B

QUESTION 5

Peer affinity is most closely related to:

- A. Parallel Interceptor redirection based on Sport ID and client IP
- B. Serial Interceptor redirection based on Sport ID to server
- C. Segstore ID Steelhead mapping based on Sport ID of Steelhead appliances
- D. The shipyard from which Riverbed is most likely to ship Interceptors

Correct Answer: C

QUESTION 6

In an existing deployment, all connections appear to be unoptimized. The Current Connections page lists the connections as pass-through.

[]

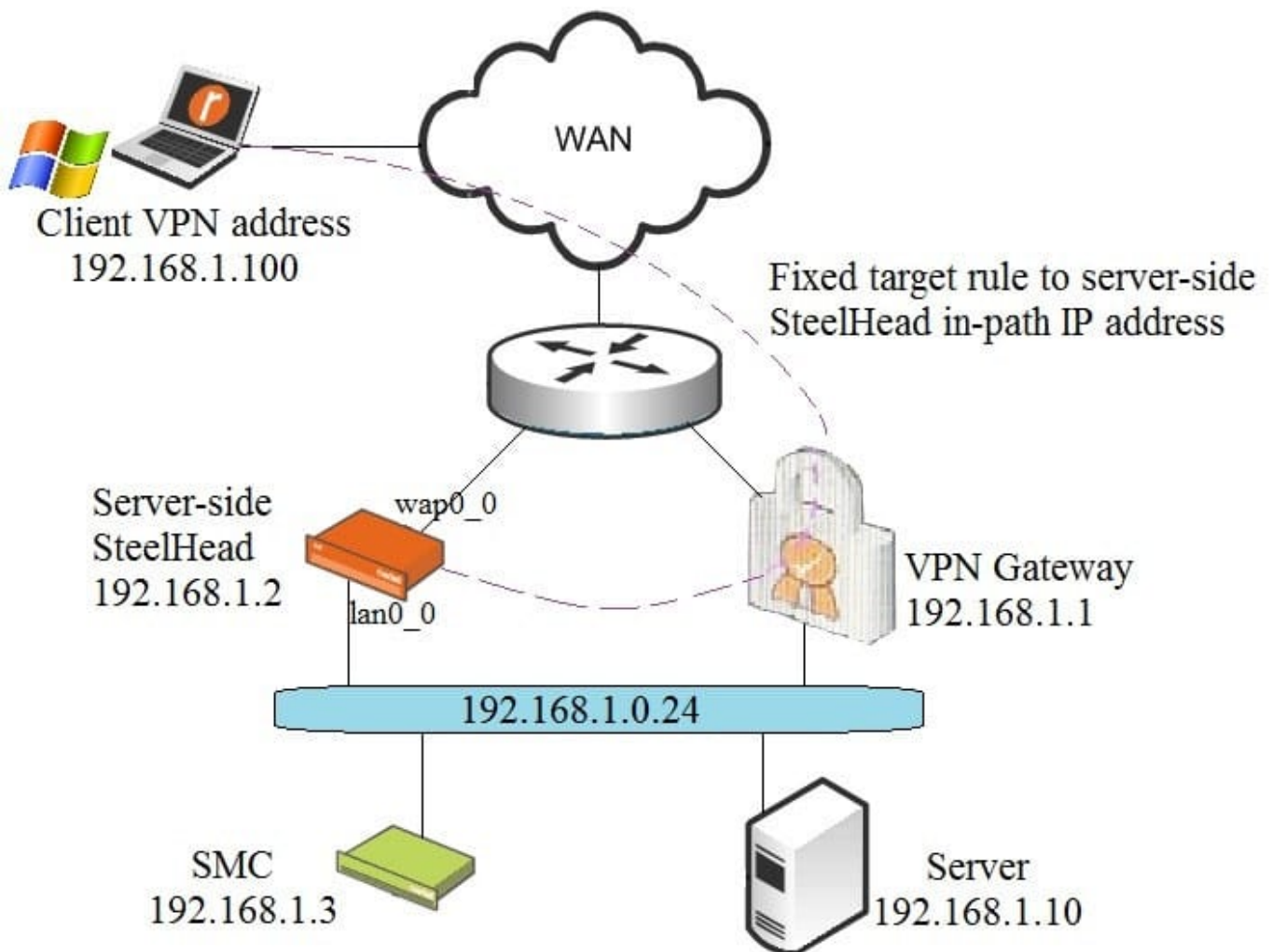
The logs indicate admission control "Jan 19 18:44:56 client sport[343]: [admission_control.WARN] Pausing intercept." What are some possible ways to alleviate the problem? (Select 2)

- A. Verify that there is no SMB Signing on the server
- B. Ensure that there are no Opportunistic Lock issues
- C. Disable or reduce the connection timeout of MAPI prepopulation
- D. Investigate if there is a virus on a client trying to propagate itself
- E. Validate that NFS v2 broadcasts are enabled

Correct Answer: CD

QUESTION 7

A customer already has a SteelHead appliance in their datacenter and wants to add Steelhead Mobile. Their current deployment has their VPN gateway in parallel with their server-side SteelHead. The customer doesn't want to interrupt VPN clients by moving the SteelHead in-path with the VPN gateway, so they will test using a fixed-target rule to the SteelHead in-path interface. Take a look at this diagram: Will the client traffic be optimized to the server 192.168.1.10?



- A. No, the fixed-target rule should be directed to the SteelCentral Controller for SteelHead Mobile IP address.
- B. No, the SteelHead Mobile client will report 'asymmetry' and fail to optimize.
- C. Yes, the WAN router will redirect traffic to the SteelHead using PBR.
- D. Yes, the fixed-target rule will direct traffic to the SteelHead correctly.

Correct Answer: B

QUESTION 8

For a new connection, an Interceptor appliance has no peer affinity, which Steelhead appliance will the Interceptor appliance choose for the connection?

- A. The Interceptor appliance selects the Steelhead appliance with the least connections
- B. The Interceptor appliance selects the Steelhead that has the most connections
- C. The Interceptor appliance selects the most loaded Steelhead appliance
- D. The Interceptor appliance selects the Steelhead appliance with the most peer affinity

Correct Answer: A

QUESTION 9

When using TACACS+ or RADIUS to authenticate management access to the CMC appliance, which of the following is true?

- A. You are required to supply login credentials to every Steelhead appliance
- B. You will automatically be logged into to every Steelhead appliance
- C. All users will use the same user name and password
- D. It is not possible to use TACACS+ or RADIUS

Correct Answer: A

QUESTION 10

In creating a customized Steelhead Mobile client MSI package, what is the Group ID (GID) used for?

- A. Organization of groups
- B. Configuring individual Steelhead Mobile client users with different license groups
- C. Configuration of fixed-target rule groups
- D. Configuration of pass-through rule groups
- E. All of the above

Correct Answer: A

QUESTION 11

In an implementation using a 4-port card, which interface could be used as the Connection Forwarding neighbor?
(Select 2)

- A. Primary

B. AUX

C. inpath0_0

D. inpath0_1

Correct Answer: CD

QUESTION 12

What information is available in the System Snapshot files on the Steelhead Mobile Controller?

A. A copy of all memory

B. A copy of hardware registers

C. Status indicators

D. System configs and tcpdumps

E. A, B, and C

Correct Answer: E