

**100%** Money Back  
**Guarantee**

**Vendor:**Cisco

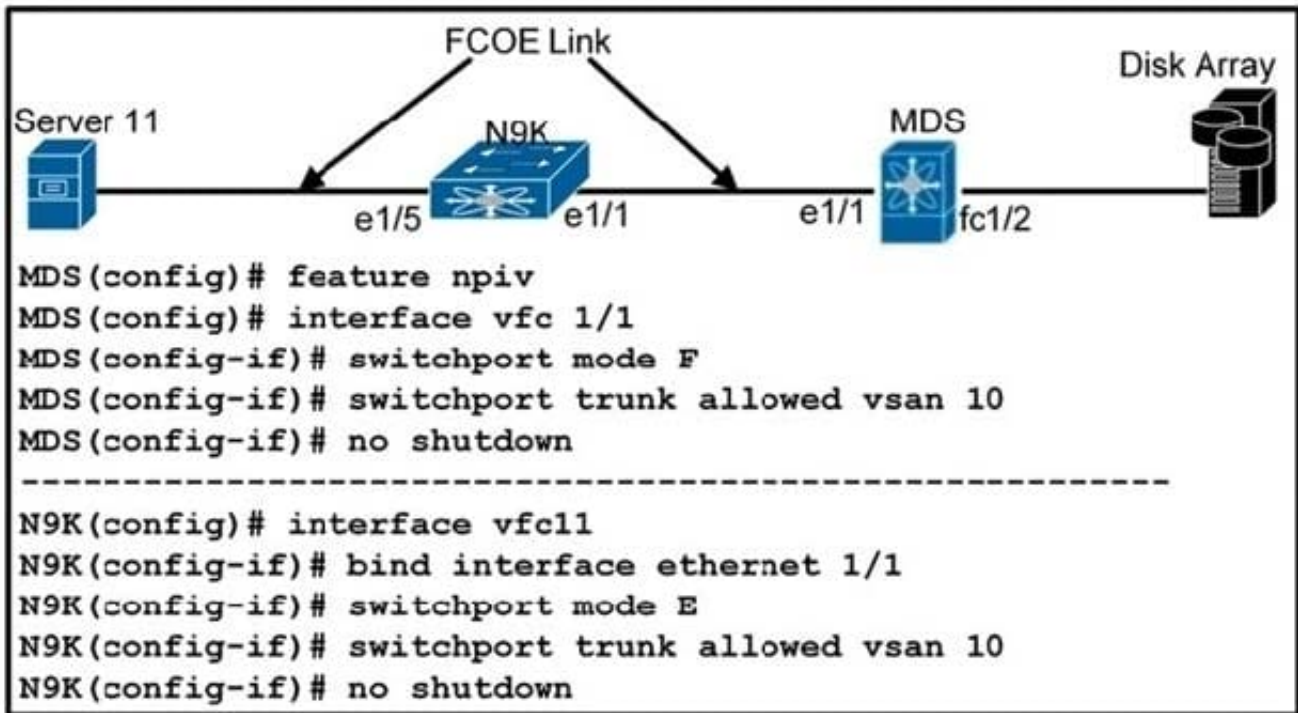
**Exam Code:**300-615

**Exam Name:**Troubleshooting Cisco Data Center  
Infrastructure (DCIT)

**Version:**Demo

## QUESTION 1

Refer to the exhibit.



A network engineer is configuring the FCoE N\_Port virtualization storage area network. After the initial implementation, server 11 fails to connect to the disk array. Which action resolves the issue?

- A. On MDS interface vfc 1/1, change switchport mode configuration to VF
- B. On N9K interface vfc11, change switchport mode configuration to NP
- C. On N9K interface vfc11 and MDS interface vfc 1/1, change switchport mode configuration to F
- D. On N9K interface vfc11 and MDS interface vfc 1/1, change switchport mode configuration to E

Correct Answer: D

---

## QUESTION 2

Refer to the exhibit.

```
switch# show ip ospf
```

```
^
```

```
% invalid command detected at '^' marker.
```

An engineer fails to implement OSPF routing on a Cisco Nexus 9000 Series Switch. Which action resolves the issue?

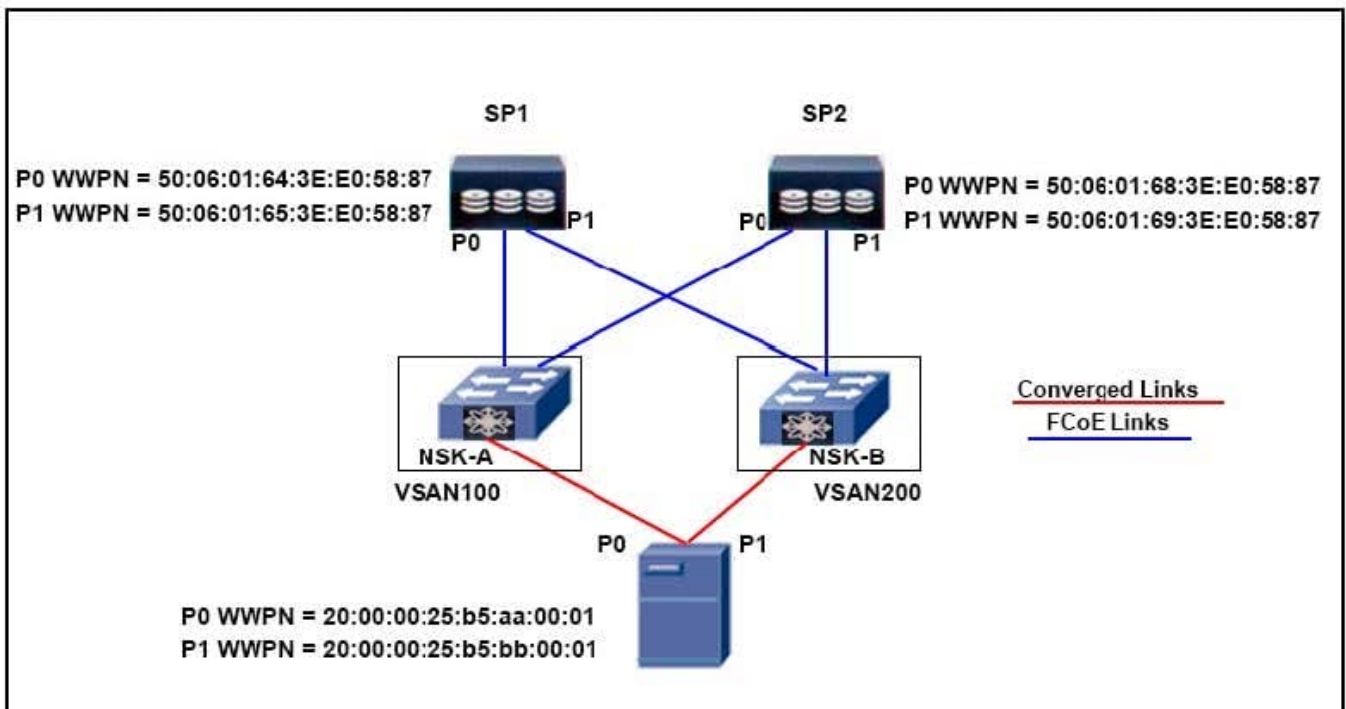
- A. Enable the OSPF feature.
- B. Remove invalid characters from the command.
- C. Populate the OSPF database.
- D. Wait for the OSPF adjacency to be established.

Correct Answer: A

---

### QUESTION 3

DRAG DROP Refer to the exhibit.



```

!!!! VSAN100-ZONING
zone name host1_hba0- SP1 vsan 100
  member pwn 20:00:00:25:b5:aa:00:01

zone name host1_hba0_SP2 vsan 100
  member pwn 50:06:01:68:3E:E0:E0:58:87

!!!! VSAN200-ZONING
zone name host1_hba1- SP1 vsan 200
  member pwn 50:06:01:65:3E:E0:58:87

zone name host1_hba1_SP2 vsan 200
  member pwn 20:00:00:25:b5:bb:00:01
  
```

Name	vNIC/v...	Type	WWN	LUN N...
SAN Primary	hba0	Primary		
San Target Primary		Primary	50:06:01:64:3E:E0:58:87	0
SAN Target Secondary		Secondary	50:06:01:64:3E:E0:58:87	0
SAN Secondary	hba1	Secondary		
San Target Primary		Primary	50:06:01:68:3E:E0:58:87	0
SAN Target Secondary		Secondary	50:06:01:69:3E:E0:58:87	0

Move Up Move Down Delete

Boot from SAN fails. The host fails to detect the LUNs. You must resolve the issue. Drag and drop the WWPNs on the left to the correct zones on the right.

Select and Place:

50:06:01:69:3E:E0:58:87

host1\_hb0\_SP1 vsan 100

20:00:00:25:b5:aa:00:01

host1\_hba1\_SP1 vsan 200

50:06:01:64:3E:E0:58:87

host1\_hba0\_SP2  
vsan 100

20:00:00:25:b5:bb:00:01

host1\_hba1\_SP2  
vsan 200

Correct Answer:

50:06:01:64:3E:E0:58:87

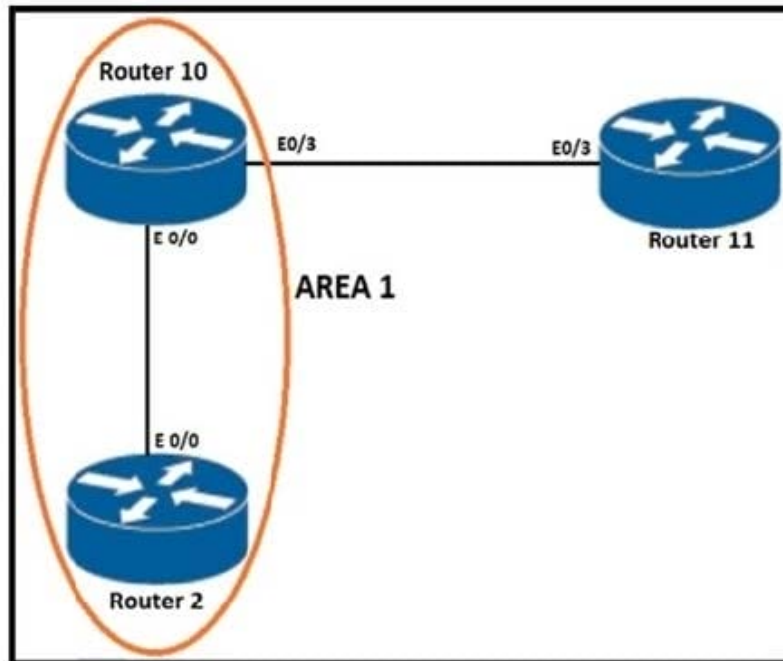
20:00:00:25:b5:aa:00:01

20:00:00:25:b5:bb:00:01

50:06:01:69:3E:E0:58:87

**QUESTION 4**

Refer to the exhibit.



```

R10#debug condition interface ethernet0/0
Condition 1 set

R10# debug ip ospf packet
OSPF packet debugging is on
*Feb 19 01:43:27.659: OSPF-1 PAK : Et0/0: IN: 10.2.10.2->224.0.0.5: ver:2 type:1
len:44 rid:10.0.0.2 area:0.0.0.1 chksum:E41B auth:1
*Feb 19 01:43:29.035: OSPF-1 PAK : Et0/0: OUT: 10.2.10.10->10.2.10.2: ver:2 type:1
len:44 rid:10.0.0.10 area:0.0.0.1 chksum:CE86 auth:1

```

An engineer troubleshoots an OSPF neighborship problem between Router R2 and Router R10. Which action resolves the problem?

- A. Change area ID on Router R10
- B. Resolve unicast reply from Router R2
- C. Resolve authentication type on Router R10
- D. Change router ID on Router R10

Correct Answer: B

## QUESTION 5

Refer to the exhibit.

## SWITCH1

```
Vlan10 - Group 100 (HSRP-V1) (IPv4)
  Local state is Active, priority 110 (Cfged 110), may preempt
  Forwarding threshold(for vPC), lower: 0 upper: 110
  Hello time 3 sec, holdtime 10 sec
  Next hello sent in 1.103000 sec(s)
  Virtual IP address is 192.168.10.254 (Cfged)
  Active router is local
  Standby router is unknown
  Authentication text "cisco"
  Virtual mac address is 0000.0c07.ac64 (Default MAC)
  2 state changes, last state change 00:00:36
  IP redundancy name is hsrp-Vlan10-100 (default)
```

## SWITCH2

```
Vlan10 - Group 10 (HSRP-V1) (IPv4)
  Local state is Active, priority 109 (Cfged 109), may preempt
  Forwarding threshold(for vPC), lower: 0 upper: 109
  Hello time 3 sec, holdtime 10 sec
  Next hello sent in 0.822000 sec(s)
  Virtual IP address is 192.168.10.254 (Cfged)
  Active router is local
  Standby router is unknown
  Authentication text "cisco"
  Virtual mac address is 0000.0c07.ac0a (Default MAC)
  11 state changes, last state change 00:00:42
  IP redundancy name is hsrp-Vlan10-10 (default)
```

The servers experience intermittent connectivity issues in VLAN 10. Which action resolves the issue?

- A. Configure the same HSRP group on the peer switches.
- B. Enable HSRP hellos between the peer switches.
- C. Disable the preempt feature on one of the peer switches.
- D. Change the virtual IP address on one of the peer switches.

Correct Answer: A

Refer to the exhibit.

```
[admin@guestshell ~]$ sudo yum install docker
Loaded plugins: fastestmirror
Loading mirror speeds from cached hostfile
Could not retrieve mirrorlist http://mirrorlist.centos.org/?release=7&
arch=x86_64&repo=os&infra=stock error was
14: curl#6 - "Could not resolve host: mirrorlist.centos.org; Unknown error"
```

One of the configured repositories failed (Unknown), and yum doesn't have enough cached data to continue. At this point the only safe thing yum can do is fail. There are a few ways to work "fix" this:

1. Contact the upstream for the repository and get them to fix the problem.
2. Reconfigure the baseurl/etc. for the repository, to point to a working upstream. This is most often useful if you are using a newer distribution release than is supported by the repository (and the packages for the previous distribution release still work).
3. Disable the repository, so yum won't use it by default. Yum will then just ignore the repository until you permanently enable it again or use `--enablerepo` for temporary usage:

```
yum-config-manager --disable <repoid>
```

4. Configure the failing repository to be skipped, if it is unavailable. Note that yum will try to contact the repo. when it runs most commands, so will have to try and fail each time (and thus. yum will be be much slower). If it is a very temporary problem though, this is often a nice compromise:

```
yum-config-manager --save --setopt=<repoid>.skip_if_unavailable=true
```

```
Cannot find a valid baseurl for repo: base/7/x86_64
[admin@guestshell ~]$ ping mirrorlist.centos.org
ping: unknown host mirrorlist.centos.org
```

```
[admin@guestshell ~]$ cat /etc/resolv.conf
[admin@guestshell ~]$ █
```

An engineer fails to install Perl in the guest shell on a Cisco Nexus 9000 Series Switch. Which two actions must be taken in the guest shell to resolve the issue? (Choose two.)



- A. Add the DNS server and suffix.
- B. Add a default gateway and nameserver.
- C. Install the unbound resolver package using curl.
- D. Configure domain-name and nameserver under the management VRF.
- E. Export the http\_proxy and https\_proxy environment variables.

Correct Answer: AD

---

### QUESTION 7

An engineer troubleshoots FCoE on a Cisco MDS 9000 Series Switch. What does this output indicate about port channel 1?

```
MDS-8# show interface port-channel 1
port-channel1 is down (No operational members)
Hardware is Fibre Channel
Port WWN is 24:03:8c:60:4f:cf:7d:20
Admin port mode is E, trunk mode is on
snmp link state traps are enabled
Port vsan is 1
5 minutes input rate 192 bits/sec,24 bytes/sec, 0 frames/sec
5 minutes output rate 0 bits/sec,0 bytes/sec, 0 frames/sec
380454 frames input,702340532 bytes
0 discards,0 errors
0 invalid CRC/FCS,0 unknown class
0 too long,0 too short
381988 frames output,643629179 bytes
0 discards,0 errors
8370 input OLS,4088 LRR,0 NOS,0 loop inits
6769 output OLS,6757 LRR, 4294 NOS, 1 loop inits
Member[1] : fc1/1 [down]
Member[2] : fc1/2 [down]
```

- A. Port channel 1 is configured to connect to an NPIV switch.
- B. Port channel 1 is configured to be an ISL.
- C. Port channel 1 is configured to connect to an NPV switch.

D. Port channel 1 is configured to connect to a host bus adapter.

Correct Answer: B

---

### QUESTION 8

Refer to the exhibit.

```
N9K# show install inactive
Boot Image:
  NXOS Image: bootflash:///nxos.7.0.3.I7.3.bin

Inactive Packages:
  nxos.CSC000002_eth-n9k_ALL-1.0.0-7.0.3.I7.3.lib32_n9000

Inactive Base Packages:

N9K# show install active
Boot Image:
  NXOS Image: bootflash:///nxos.7.0.3.I7.3.1.bin

Active Packages:
  nxos.CSC000001_core-n9k_ALL-1.0.0-7.0.3.I7.3.lib32_n9000
```

After an unexpected reload of the Cisco Nexus 9000 Series Switch, the network administrator noticed that one of the Software Maintenance Upgrades (SMU) images is inactive. The engineer must ensure that the package remains active after the switch is reloaded in the future. Which action accomplishes this goal?

- A. Copy the SMU package file on the bootflash
- B. Deactivate and uninstall the active core package
- C. Save the running configuration after activating the package
- D. Commit the package using the install commit command

Correct Answer: D

---

### QUESTION 9

A customer reports that the Chassis Management Controller fails to receive chassis information from Cisco UCS

Manager. Which set of steps resolves the issue?

- A. 1) Verify that the IOM firmware and Cisco UCS Manager are at different software levels 2) Verify that at least two physical cables between the IOM and fabric interconnect function properly. 3) Check for runtime link down status 4) Reseat the affected IOM.
- B. 1) Verify that the IOM firmware and Cisco UCS Manager are at the same software level. 2) Verify that at least one physical cable between the IOM and fabric interconnect functions properly. 3) Check for runtime link down status 4) Reseat the affected IOM.
- C. 1) Verify that the IOM firmware and Cisco UCS Manager are at the same software level. 2) Verify that at least two physical cables between the IOM and fabric interconnect function properly. 3) Check for runtime link down status. 4) Reseat the affected IOM.
- D. 1) Verify that the IOM firmware and Cisco UCS Manager are at different software levels. 2) Verify that at least one physical cable between the IOM and fabric interconnect functions properly. 3) Check for runtime link down status. 4) Reseat the affected IOM.

Correct Answer: B

[https://www.cisco.com/c/en/us/td/docs/unified\\_computing/ucs/ts/guide/UCSTroubleshooting/UCSTroubleshooting\\_chapter\\_01001.html](https://www.cisco.com/c/en/us/td/docs/unified_computing/ucs/ts/guide/UCSTroubleshooting/UCSTroubleshooting_chapter_01001.html)

---

## QUESTION 10

Refer to the exhibit.

```
FI-A(nxos)# show int vfc 952
vfc952 is down (Error Disabled - VLAN L2 down on Eth interface)
Bound interface is Vethernet9155
Port description is server 1/5, VHBA fc0
Hardware is Ethernet
Port WWN is 23:c2:00:de:fb:2b:e6:ff
Admin port mode is F, trunk mode is on
snmp link state traps are enabled
Port vsan is 100
1 minute input rate 0 bits/sec, 0 bytes/sec, 0 frames/sec
1 minute output rate 0 bits/sec, 0 bytes/sec, 0 frames/sec
0 frames input, 0 bytes
0 discards, 0 errors
0 frames output, 0 bytes
0 discards, 0 errors
```

A network engineer is implementing a Cisco UCS environment. The environment consists of eight servers configured with the same service profile template and Windows 2012 installed. The VFC interfaces of five of these servers are showing the error shown in the exhibit. Which action resolves the issue?

- A. Modify the vHBAs name in the storage connectivity policy
- B. Configure upstream zoning

- C. Decommission and recommission the servers
- D. Modify the boot order in the boot policy

Correct Answer: A

---

### QUESTION 11

Refer to the exhibit.



A Postman call to a Cisco APIC fails. The access credentials were confirmed to be configured as expected. Which action resolves the issue?

- A. Change operation type to POST
- B. Modify the protocol to HTTP
- C. Change the IP address to a domain name
- D. Modify the target protocol type to XML

Correct Answer: A

---

### QUESTION 12

Refer to the exhibit.

```
C:\> curl -X GET -k http://apic1/api/aaaLogin.json -d
'{aaaUser:{attributes:{name:"autobot",pwd:"!@mR00t"}}}'

{"totalCount":"1","imdata":[{"error":{"attributes":{"code":"400",
"text":"Failed to parse login request"}}}]}
```

The NetOevOps team is using REST API calls to automate the Cisco APIC monitoring. Which action resolves the issue?

- A. Remove the attributes keyword from the message data.
- B. Change the API request method to POST.
- C. Modify the URI to `http://apic1/api/aaaLogin.xml`.
- D. Use "double quotes" between each word in the message area.

Correct Answer: B