

100% Money Back
Guarantee

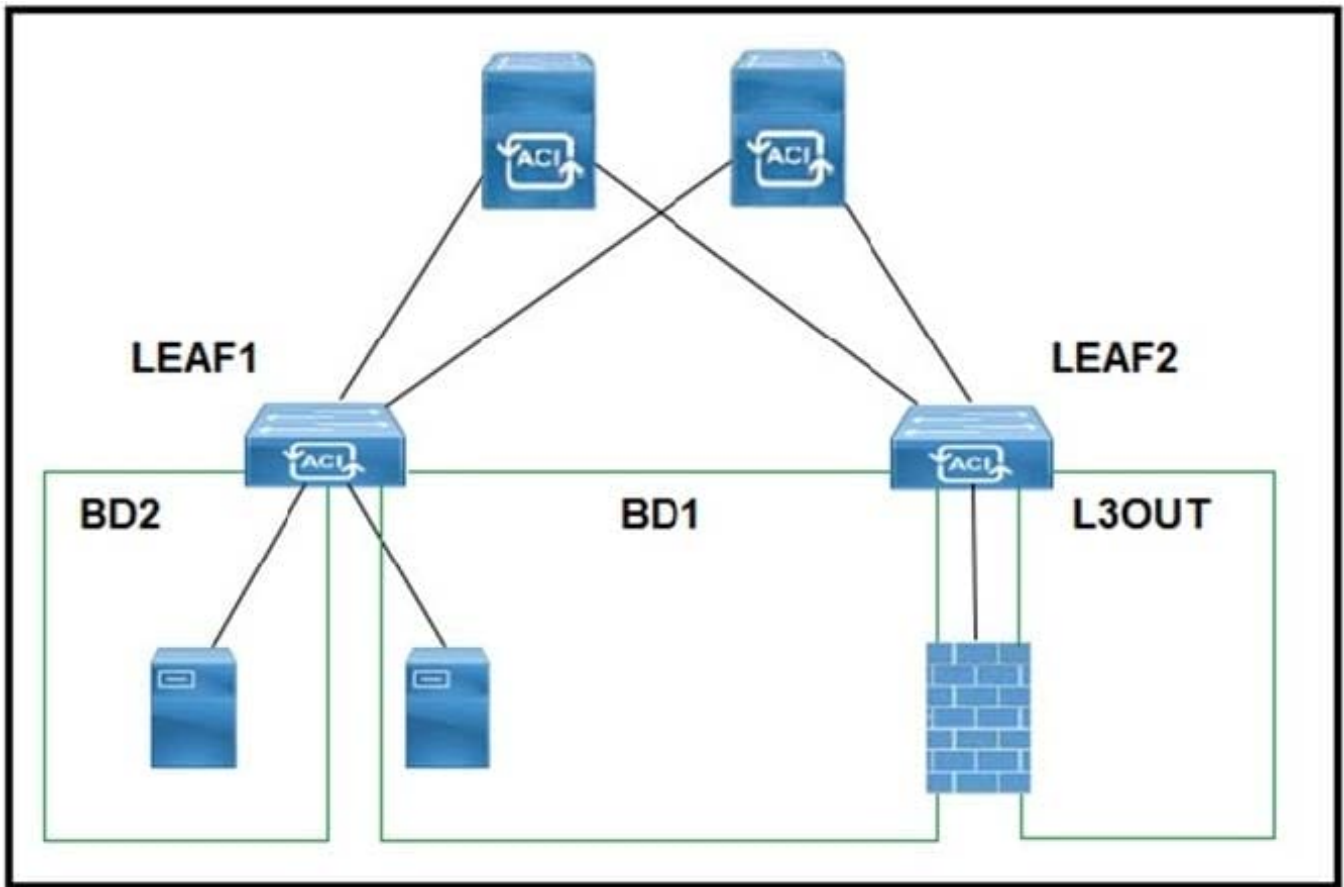
Vendor:Cisco

Exam Code:300-630

Exam Name:Implementing Cisco Application Centric
Infrastructure - Advanced (DCACIA)

Version:Demo

QUESTION 1



Refer to the exhibit. A customer experiences resource overconsumption on one of its border leaf switches. Which action should be taken to reduce the consumption on this switch?

- A. Disable VRF Policy Control Enforcement
- B. Disable IP Data Plane Learning
- C. Migrate L3Outs to another switch
- D. Disable Remote EP Learning

Correct Answer: B

QUESTION 2

What is a characteristic of a stretched bridge domain solution between Cisco ACI sites with Layer 2 flood disabled?

- A. The application profile that is associated to the bridge domain have local significance in each site.
- B. The tenant and VRF that associated to the bridge domain have local significance in each site.
- C. Headend replication is used for BUM traffic between sites.

D. IP mobility is ensured between sites for disaster recovery.

Correct Answer: B

QUESTION 3

An engineer configures a new Cisco ACI Multi-Pod setup. Which action should be taken for fabric discovery to be successful for the nodes in Pod 2?

- A. Select the Route Reflector field in Pod Peering
- B. Enable the DSCP class-cos translation policy for Layer 3 traffic
- C. Configure POD 2 Data Plane TEP under the Pod Connection Profile
- D. Add the IPN subnet under the Fabric External Routing Profile

Correct Answer: D

QUESTION 4

Filter - SSH

[Policy](#) [Faults](#) [History](#)

Properties

Name: SSH

Alias:

Description: optional

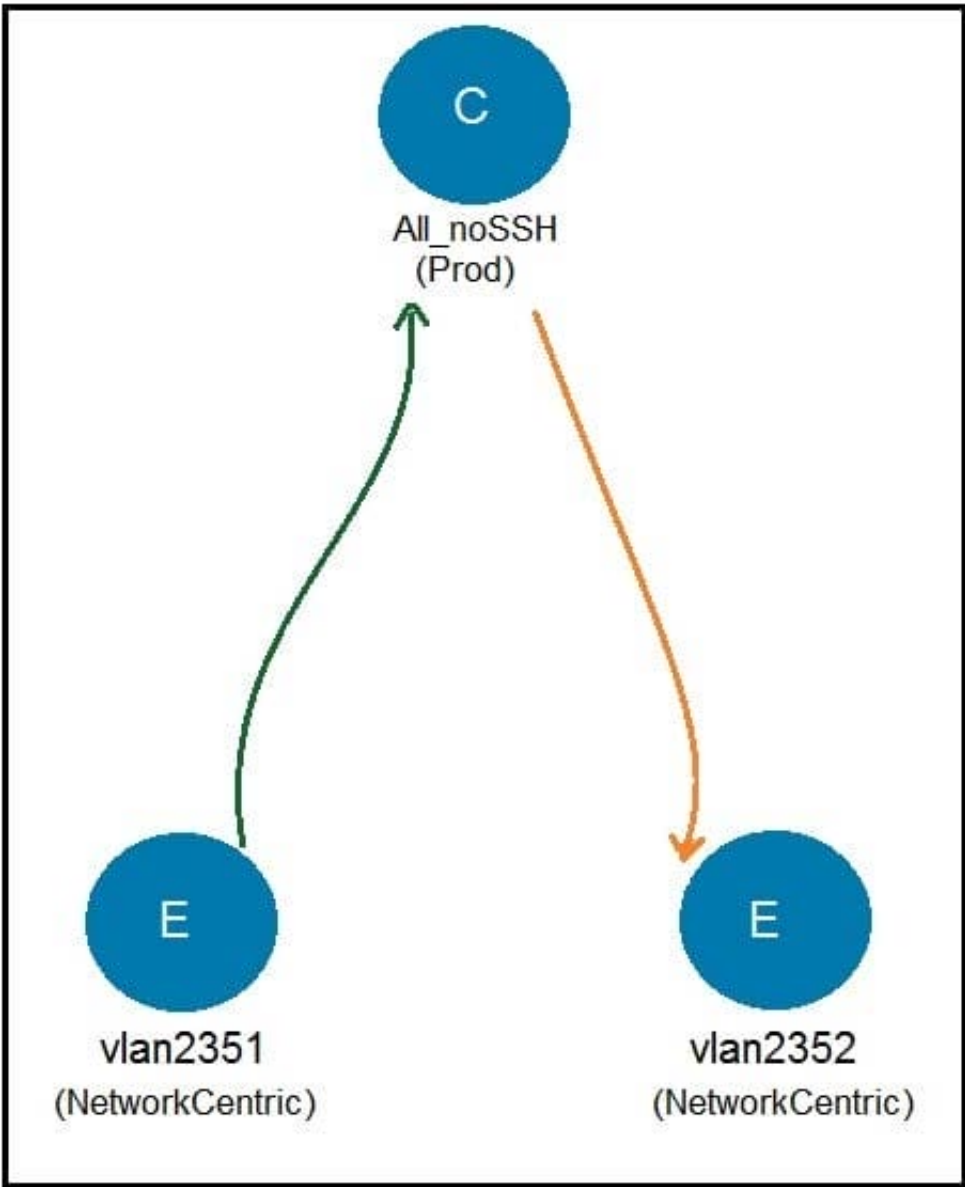
Tags:
enter tags separated by comma

Global Alias:

Entries:

Name	Alias	EtherType	ARP Flag	IP Protocol	Match Only Fragme	Stateful	Source Port/Range		Destination Port/Range	
							From	To	From	To
ssh		IP		tcp	False	False	unspecified	unspecified	22	22

Refer to the exhibits. Which subject must be configured for the All_noSSH contract to allow all IP traffic except SSH between the two EPGs?



Ⓐ

Apply Both Directions: false
Reverse Filter Ports:

Filters:

Name	Action	Priority
common/ip	permit	default level
Prod/SSH	Deny	highest priority

Ⓑ

Apply Both Directions: false
Reverse Filter Ports:

Filters:

Name	Action	Priority
common/ip	permit	default level
Prod/SSH	Deny	lowest priority

Ⓒ

Apply Both Directions: true
Reverse Filter Ports:

Filters:

Name	Tenant	Action	Priority
SSH	Prod	Deny	highest priority
ip	common	permit	default level

Ⓓ

Apply Both Directions: true
Reverse Filter Ports:

Filters:

Name	Tenant	Action	Priority
SSH	Prod	Deny	lowest priority
ip	common	permit	default level

- A. Option A
- B. Option B
- C. Option C
- D. Option D

Correct Answer: D

Reference: https://www.cisco.com/c/en/us/td/docs/switches/datacenter/aci/apic/sw/1-x/ACI_Best_Practices/b_ACI_Best_Practices/b_ACI_Best_Practices_chapter_010.html

QUESTION 5

How is multicast traffic managed in a Cisco ACI fabric?

- A. FTag trees are rooted at the spine nodes. Cisco APIC determines the roots.
- B. FTag trees are rooted at the leaf nodes. Cisco APIC determines the roots.
- C. FTag trees are rooted at the leaf nodes. The roots must be configured manually.
- D. FTag trees are rooted at the spine nodes. The roots must be configured manually.

Correct Answer: A

Reference: <https://www.ciscolive.com/c/dam/r/ciscolive/emea/docs/2015/pdf/BRKAPP-9004.pdf>

QUESTION 6

An engineer configures a Cisco ACI Multi-Pod for disaster recovery. Which action should be taken for the new nodes to be discoverable by the existing Cisco APICs?

- A. Enable subinterfaces with dot1q tagging on all links between the IPN routers.
- B. Configure IGMPv3 on the interfaces of IPN routers that face the Cisco ACI spine.
- C. Enable DHCP relay on all links that are connected to Cisco ACI spines on IPN devices.
- D. Configure BGP as the underlay protocol in IPN.

Correct Answer: B

QUESTION 7

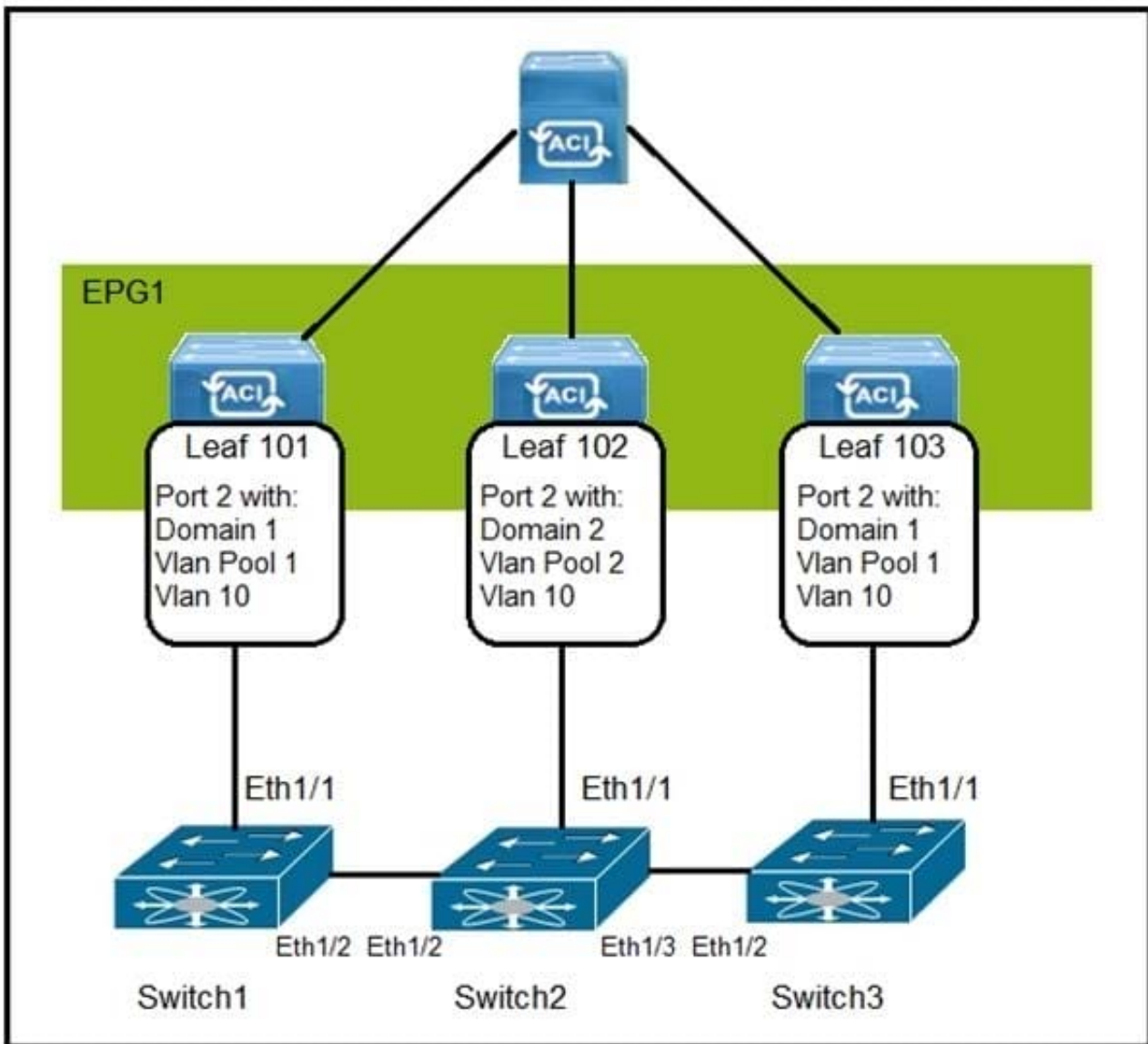
Which approach does Cisco ACI use to achieve multidestination packet forwarding between leaf switches in the same fabric?

- A. Map VXLAN VTEP to the multicast group

- B. Map VXLAN to PIM-SM protocol
- C. Map VXLAN VNI to the multicast group
- D. Map VXLAN to PIM-DM protocol

Correct Answer: C

QUESTION 8



Refer to the exhibit. How are the STP BPDUs forwarded over Cisco ACI fabric?

- A. STP BPDUs that are generated by Switch2 are received by Switch1 and Switch3.
- B. Cisco ACI fabric drops all STP BPDUs that are generated by the external switches.
- C. Cisco ACI acts as the STP root for all three external switches.

D. STP BPDUs that are generated by Switch1 are received only by Switch3.

Correct Answer: A

Reference: <https://www.linkedin.com/pulse/cisco-aci-network-behaviour-stptcn-how-identify-loop-ankit-kulshresta>

QUESTION 9

Which action should be taken in Cisco ACI to reassign a unique globally scoped pcTag to an EPG that provides a global contract?

- A. Configure subnets that are treated as virtual IP
- B. Configure subnets that advertise externally
- C. Configure subnets that are shared between VRFs
- D. Configure subnets that are private to VRF

Correct Answer: C

Reference: <https://www.cisco.com/c/en/us/support/docs/cloud-systems-management/application-policy-infrastructure-controller-apic/119023-technote-apic-00.html>

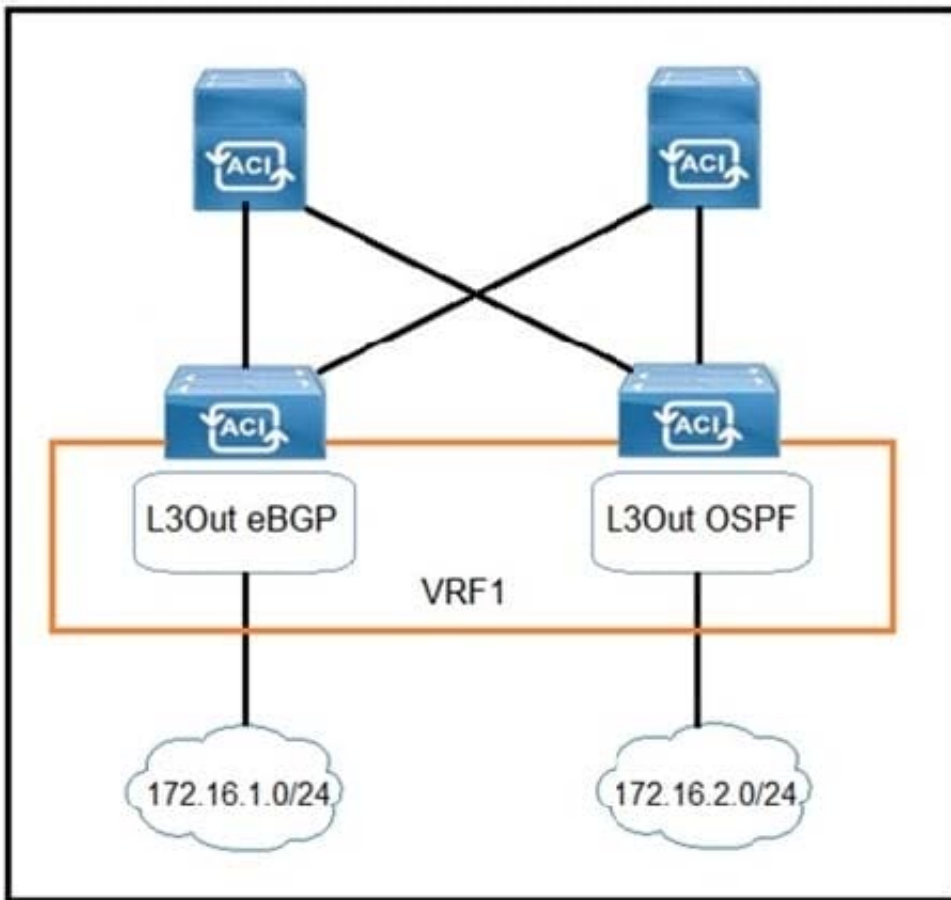
QUESTION 10

An engineer is implementing the Cisco ACI fabric but is experiencing loops detected from endpoints. When the issue was investigated, it was discovered that the packets are received with the same source IP address but from different leaf switch ports. The engineer must prevent the issue from happening in the future and make sure that the port is brought back up if it was disabled due to the loop discovered. Which set of actions must be taken to meet these requirements?

- A. Enable the enforce endpoint check and set the Rouge EP detection interval
- B. Enable the rogue endpoint and set the Error Disabled Recovery Policy
- C. Enable the remote endpoint limit and set the Interface override
- D. Enable reverse path forwarding and set the Hold Interval

Correct Answer: B

QUESTION 11



Refer to the exhibit. Which configuration must be implemented on L3Out EBGP to advertise out of the fabric 172.16.2.0/24 network that is learned from L3Out OSPF?

Ⓐ

Create Subnet
Specify the Subnet

IP Address:
address/mask

scope: Export Route Control Subnet
 Import Route Control Subnet
 External Subnets for the External EPG
 Shared Route Control Subnet
 Shared Security Import Subnet

Ⓑ

Create Subnet
Specify the Subnet

IP Address:
address/mask

scope: Export Route Control Subnet
 Import Route Control Subnet
 External Subnets for the External EPG
 Shared Route Control Subnet
 Shared Security Import Subnet

C.

Create Subnet
Specify the Subnet

IP Address:
address/mask

scope: Export Route Control Subnet
 Import Route Control Subnet
 External Subnets for the External EPG
 Shared Route Control Subnet
 Shared Security Import Subnet

D.

Create Subnet
Specify the Subnet

IP Address:
address/mask

scope: Export Route Control Subnet
 Import Route Control Subnet
 External Subnets for the External EPG
 Shared Route Control Subnet
 Shared Security Import Subnet

A. Option A

B. Option B

C. Option C

D. Option D

Correct Answer: A

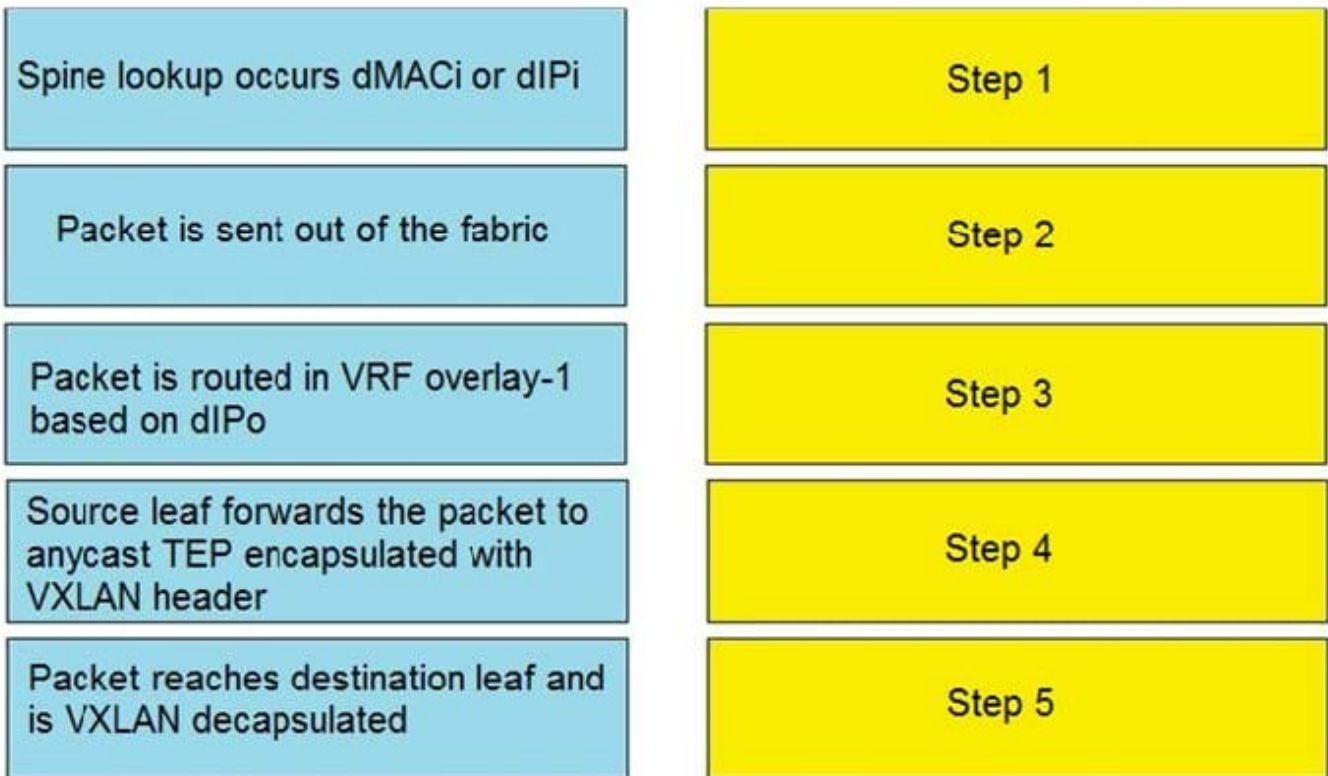
QUESTION 12

DRAG DROP

A leaf receives unicast traffic that is destined to an unknown source, and spine proxy is enabled in the corresponding bridge domain. Drag and drop the Cisco ACI forwarding operations from the left into the order the operation occurs on the right.

Select and Place:

Answer Area



Correct Answer:

Answer Area

Source leaf forwards the packet to anycast TEP encapsulated with VXLAN header

Spine lookup occurs dMACi or dIPi

Packet is sent out of the fabric

Packet reaches destination leaf and is VXLAN decapsulated

Packet is routed in VRF overlay-1 based on dIPo