

100% Money Back
Guarantee

Vendor:Cisco

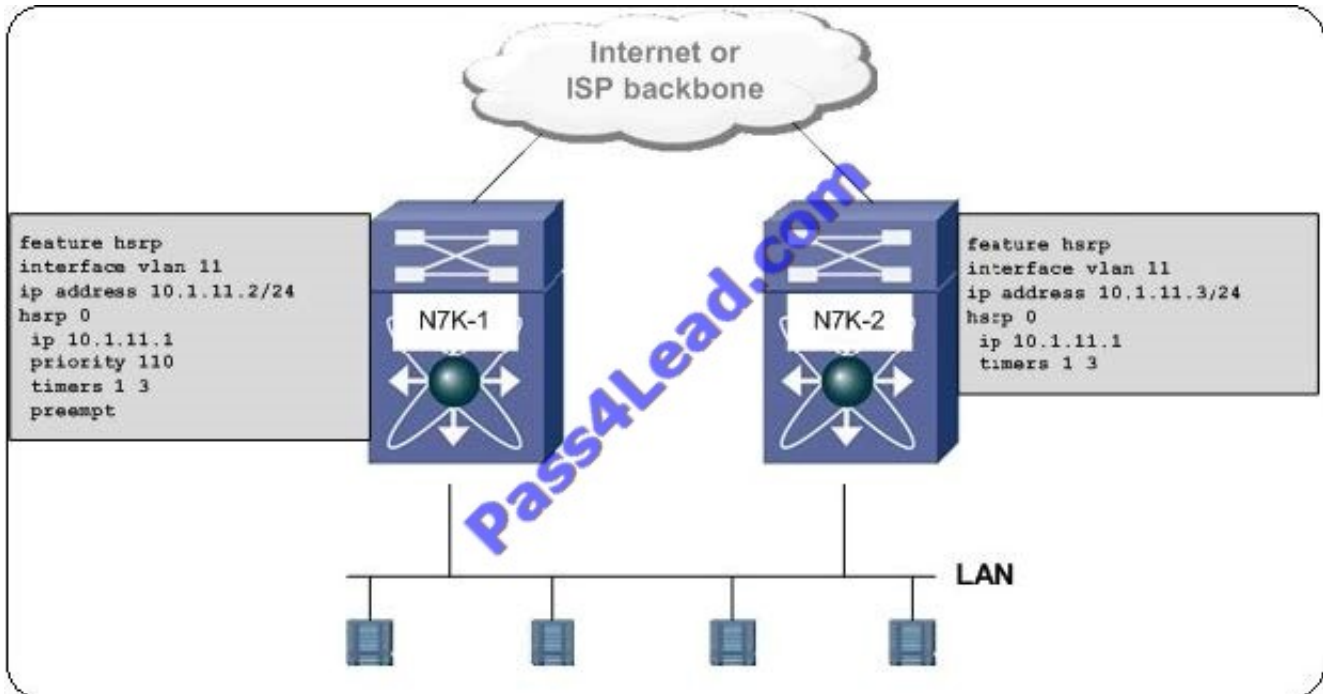
Exam Code:350-080

Exam Name:CCIE Data Center Written

Version:Demo

QUESTION 1

Refer to the exhibit.



The network administrator is seeing N7K-1 having issues with VLAN 11, and interface VLAN 11 is resetting, causing frequent HSRP state changes. Which two actions would reduce HSRP state changes? (Choose two.)

- A. On N7K-1, configure the HSRP extended hold timer to 180, extending the HSRP hello message hold time.
- B. On N7K-2, configure the HSRP extended hold timer to 180, extending the HSRP hello message hold time.
- C. On N7K-1, configure the pre-empt delay minimum to 180 in order to delay N7K-1 from taking over as the HSRP active router.
- D. On N7K-2, configure the pre-empt delay minimum to 180 in order to delay N7K-2 from taking over as the HSRP active router.
- E. On N7K-2, increase the HSRP priority to 150.
- F. On N7K-2, decrease the HSRP priority to 50.

Correct Answer: CE

QUESTION 2

On a Cisco UCS B250 server, how many physical DIMM slots make up one logical DIMM?

- A. 2
- B. 3

- C. 4
- D. 6
- E. 12

Correct Answer: A

QUESTION 3

Which protocol message does the Cisco ACE module use to insert or withdraw all RHI routes?

- A. ICMP
- B. SCP
- C. IPv4
- D. SCTP

Correct Answer: B

QUESTION 4

An administrator creates a vNIC and assigns it to Fabric A with the fabric failover feature enabled. Which statement is true?

- A. A unique vEthernet interface will be created on Fabric A and Fabric B
- B. A vEthernet interface will be created only on Fabric A
- C. A vEthernet interface will be created on Fabric A, and move across to Fabric B in the event of failure
- D. Fabric B will learn the vEthernet interface from Fabric A through a GARP
- E. The same vEthernet interface will be created on Fabric A and Fabric B

Correct Answer: A

QUESTION 5

Which mechanism do the CNA and the Cisco Nexus 5000 Series Switches use to provide a lossless class of Ethernet traffic?

- A. LLDP
- B. LACP
- C. PFC
- D. FIP

Correct Answer: C

QUESTION 6

Refer to the exhibit.

```
# show spanning-tree summary
Switch is in rapid-pvst mode
Root bridge for: VLAN0003-VLAN0004, VLAN0010-VLAN0013, VLAN0050, VLAN0100
VLAN0110, VLAN0130, VLAN0144, VLAN0150, VLAN0200-VLAN0300, VLAN0321
VLAN0511, VLAN0778-VLAN0780, VLAN1111, VLAN1301, VLAN1305-VLAN1306, VLAN150
VLAN3000
Port Type Default          is edge
Edge Port [PortFast] BPDU Guard Default is disabled
Edge Port [PortFast] BPDU Filter Default is disabled
Bridge Assurance           is enabled
Loopguard Default         is disabled
Pathcost method used       is short
STP-Lite                   is enabled

# show vpc
Legend:
(*) - local vPC is down, forwarding via vPC peer-link

vPC domain id              : 3
Peer status                 : peer adjacency formed ok
vPC keep-alive status       : peer is alive
Configuration consistency status : success
Per-vlan consistency status : success
Type-2 consistency status   : failed
Type-2 inconsistency reason : SVI type-2 configuration incompatible
vPC role                    : primary, operational secondary
Number of vPCs configured   : 6
Peer Gateway                 : Enabled
Peer gateway excluded VLANs : -
Dual-active excluded VLANs  : -
Graceful Consistency Check   : Enabled
Auto-recovery status        : Enabled (timeout = 240 seconds)
```

Which two statements about spanning tree are true? (Choose two.)

- A. BPDUs from a vPC are processed on this switch
- B. BPDUs are processed and generated by both peer switches.
- C. This switch cannot generate BPDUs for a vPC.
- D. BPDUs are sent to the peer switch for processing.
- E. BPDUs received on this switch are dropped because of Type 2 inconsistency issues.
- F. This switch generates BPDUs for vPC.

Correct Answer: CD

QUESTION 7

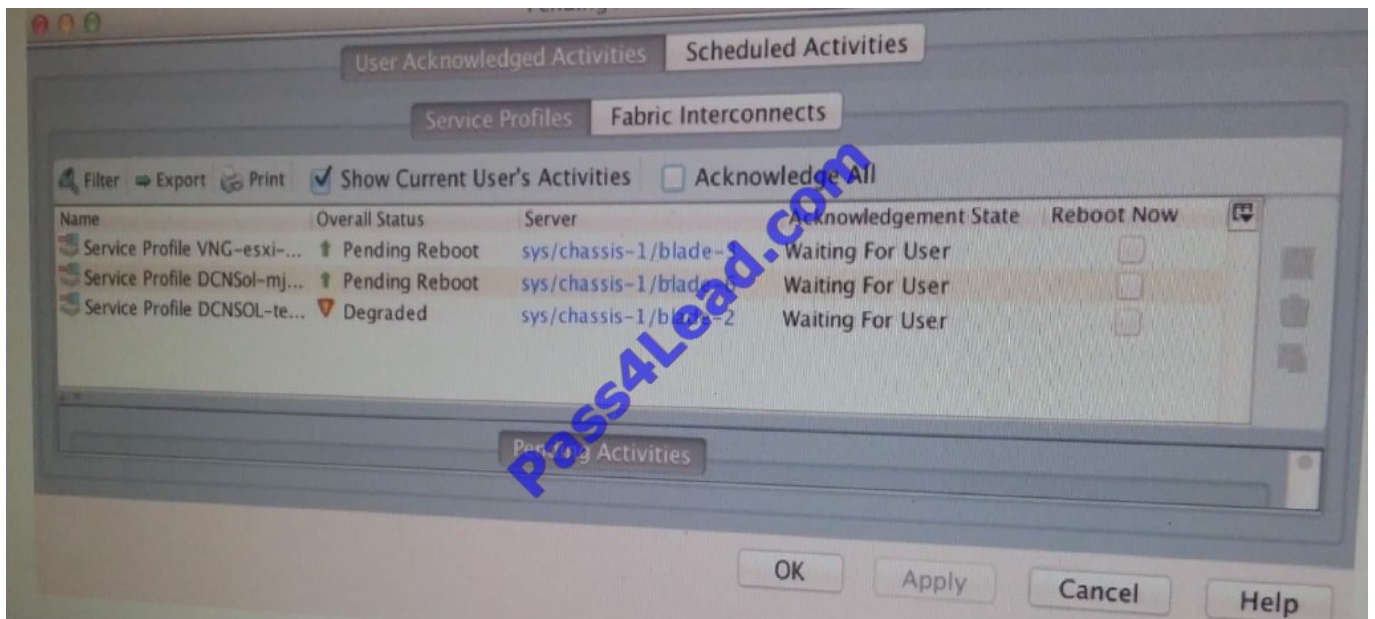
On a Cisco UCS B250 M2 server that is fully populated with 1333-MHz memory and an E5640 CPU, what is the fastest speed the memory can run at?

- A. 800 MHz
- B. 900 MHz
- C. 1066 MHz
- D. 1333 MHz
- E. 1666 MHz

Correct Answer: C

QUESTION 8

Refer to the exhibit.



Which statement is not true?

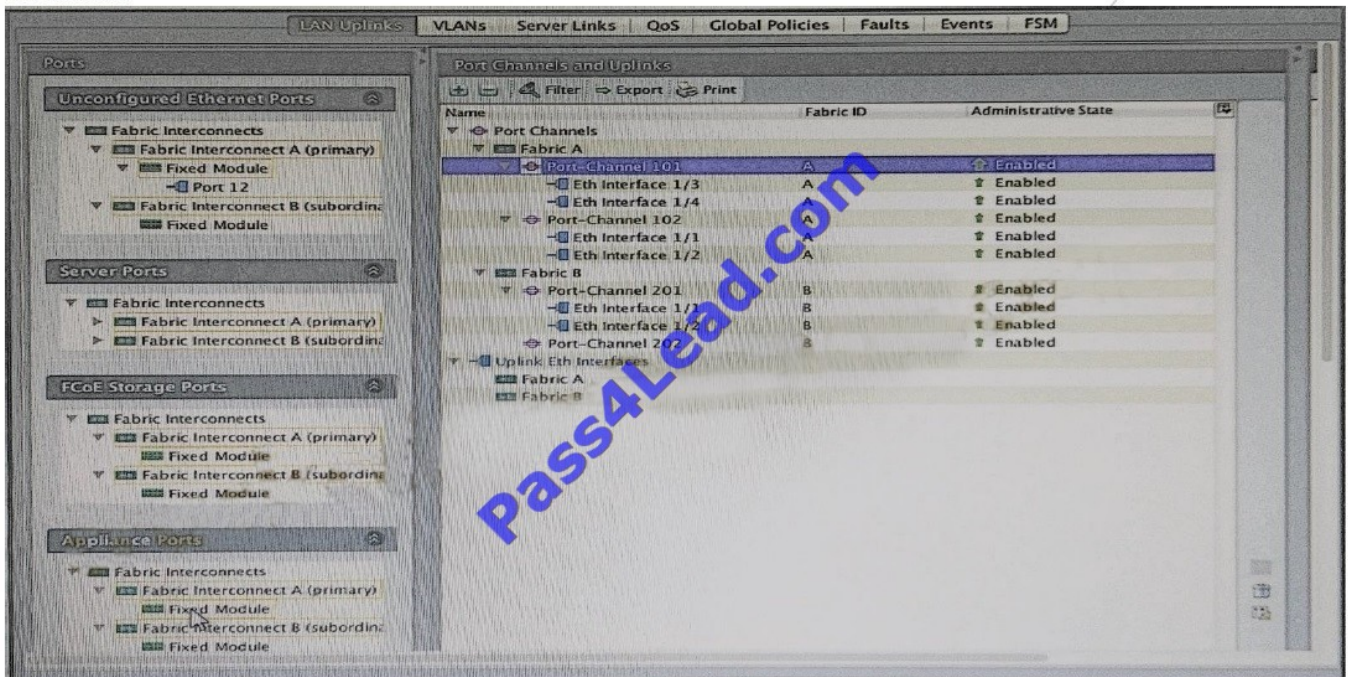
- A. Chassis 1 in blade 2 has a major fault.
- B. Those service profiles have a user acknowledge maintenance policy configured.
- C. If you check Acknowledge All and click Apply, the blades reload.
- D. Any user can acknowledge the reload

Correct Answer: D

Explanation: Ref: Cisco UCS Manager 2.2 Guide

QUESTION 9

Refer to the exhibit.



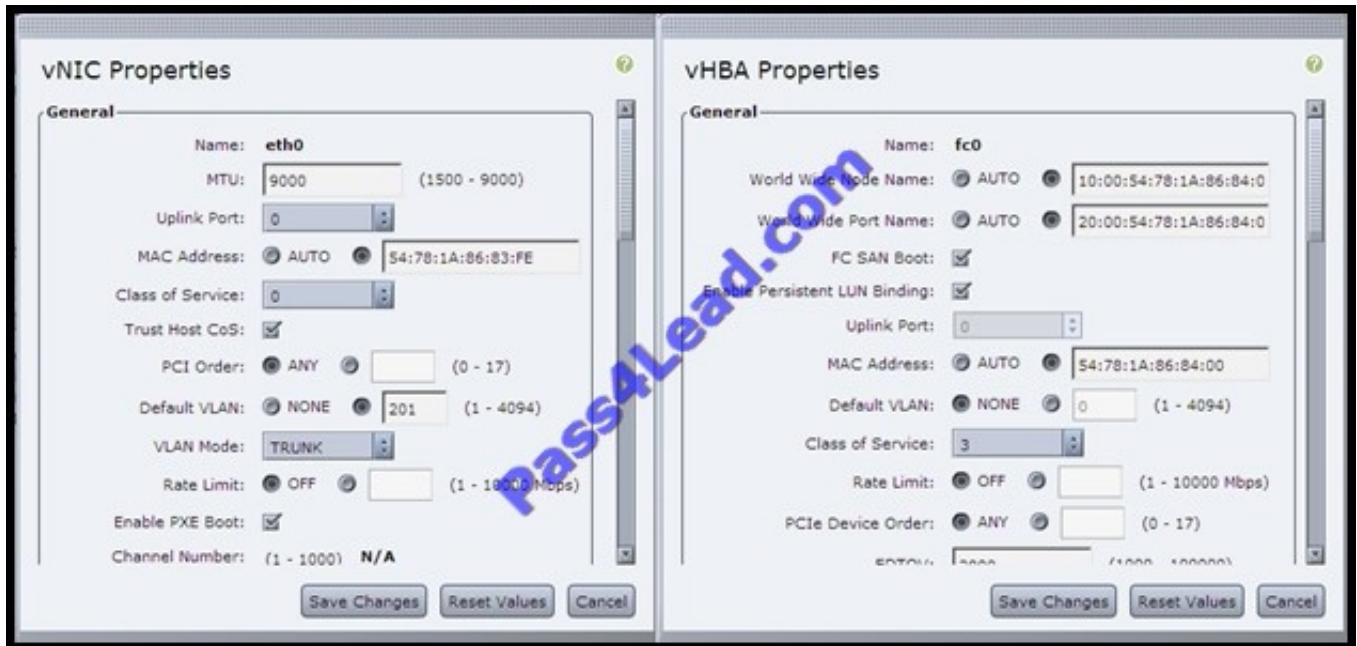
Which two statements are true? (Choose two)

- A. No server ports are configured.
- B. Four port channels are configured and they all are up.
- C. One port is not configured.
- D. No uplink ports are configured.
- E. Two appliance ports are configured.

Correct Answer: BC

QUESTION 10

Refer to the exhibit.



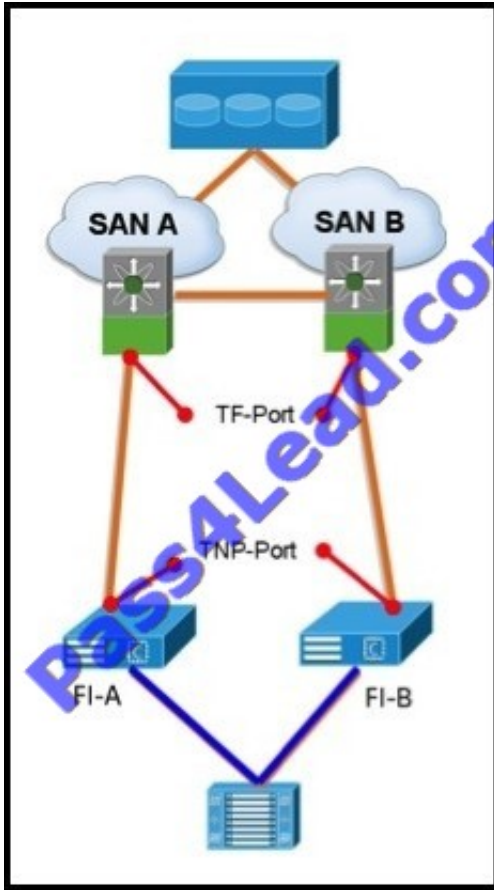
You are configuring a UCS C-Series server for SAN boot over FCoE. The server fails to boot after the HBA option ROM loads. Which option describes the most likely solution for this problem?

- A. Decrease the vNIC MTU.
- B. Set the vNIC Class of Service to a nonzero value.
- C. Set the default VLAN to FCOE VLAN.
- D. Set the vHBA Class of Service to 2.
- E. Uncheck the PXE Boot option.
- F. Disable Persistent LUN Binding.

Correct Answer: C

QUESTION 11

Refer to the exhibit.



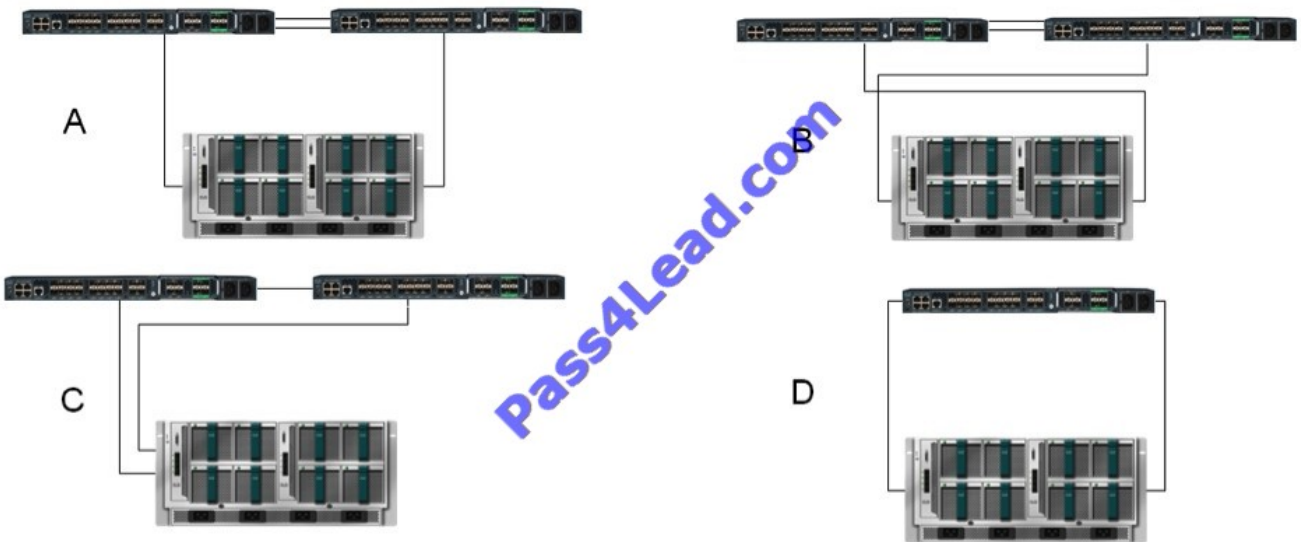
Which two statements about the diagram are true? (Choose two.)

- A. Cisco UCS Manager is set to FC switching mode.
- B. Cisco UCS Manager is set to FC end-host mode.
- C. The topology is not supported.
- D. The uplinks from each FI can carry multiple VSANs.
- E. The uplinks from each FI can carry a single VSAN only.

Correct Answer: BD

QUESTION 12

Refer to the exhibit.



Which option is valid for connecting the fabric interconnects to the I/O module?

A. A, B, C, and D are valid.

B. A and B are valid.

C. A, B, and D are valid.

D. Only A is valid.

Correct Answer: B

To Read the [Whole Q&As](#), please purchase the [Complete Version](#) from [Our website](#).

Try our product !

100% Guaranteed Success

100% Money Back Guarantee

365 Days Free Update

Instant Download After Purchase

24x7 Customer Support

Average 99.9% Success Rate

More than 800,000 Satisfied Customers Worldwide

Multi-Platform capabilities - [Windows](#), [Mac](#), [Android](#), [iPhone](#), [iPod](#), [iPad](#), [Kindle](#)

Need Help

Please provide as much detail as possible so we can best assist you.

To update a previously submitted ticket:



 <p>One Year Free Update Free update is available within One Year after your purchase. After One Year, you will get 50% discounts for updating. And we are proud to boast a 24/7 efficient Customer Support system via Email.</p>	 <p>Money Back Guarantee To ensure that you are spending on quality products, we provide 100% money back guarantee for 30 days from the date of purchase.</p>	 <p>Security & Privacy We respect customer privacy. We use McAfee's security service to provide you with utmost security for your personal information & peace of mind.</p>
---	---	--

Any charges made through this site will appear as Global Simulators Limited.

All trademarks are the property of their respective owners.