

100% Money Back
Guarantee

Vendor:Avaya

Exam Code:3605

Exam Name:Avaya Ethernet Routing Switch
Implementation and Maintenance Exam

Version:Demo

QUESTION 1

Which VLAN/VLANs should be included on the Inter Switch Trunks (IST) for a proper functioning split Multi-Link (SMLT) configuration?

- A. Only VLAN 101
- B. Only VLAN 1 and the IST
- C. Only the VLANs that are also included on the SMIT/SLT uplinks³
- D. The IST VLAN and all the VLANs that are included on all SMLT/SLT links

Correct Answer: D

QUESTION 2

A technician is adding the Virtual link Aggregation Control Protocol (VLACP) configuration to a Converged Campus Solution where all Ethernet Routing Switches

(ERSs) are directly connected without intermediary WAN transport devices.

What are two recommended configuration tasks? (Choose two.)

- A. Configure all links to use the same timeout value.
- B. For the Inter Switch Trunks (IST) links, configure the long time-out value.
- C. For the SMLT links, configure the long timeout value.
- D. Configure all links to use a global reserved multicast MAC address for VLACP messages.

Correct Answer: BD

QUESTION 3

In a multicast campus, when should the PIM interface in passive mode be configured?

- A. When the ERS 8600 is used as an edge switch and is aggregating end users
- B. When PIM control traffic must be passed
- C. When there are no unicast routing paths
- D. When more than one multicast routing protocol is in use

Correct Answer: A

QUESTION 4

What is the maximum number of Gigabit Ethernet ports on a single Ethernet Routing Switch (ERS) 8300 Input/Output module?

- A. 16
- B. 24
- C. 48
- D. 50

Correct Answer: C

QUESTION 5

A technician has installed a license file on the Ethernet routing switch (ERS) 8800 and rebooted, but cannot configure the associated licensed features. It has been determined that the license did not load properly at bootup time.

Which two must be verified?

- A. The switch is at the current release.
- B. The license filename contains valid characters.
- C. The license file is stored in the flash directory.
- D. The appropriate license level has been obtained.
- E. The license file has .dat extension.

Correct Answer: BE

QUESTION 6

While configuring packet capture tool (PCAP), an Ethernet Routing Switch (ERS) 8600 switch has generated the following log:

```
pcapAllocateBuffer: malloc(96 Mbs) failed
```

Which event could have caused this log, and which course of action resolves the issue?

- A. The memory allocation failed to wrap. Set Pcmcia Wrap to true.
- B. The packet capturing stopped. Enable the Buffer-wrap or reset the stats.
- C. The length of the IP frame is too long to capture. Turn on fragmentation.
- D. There is not enough available memory for PCAP. Try with a lower value of buffer-size.

Correct Answer: D

QUESTION 7

A campus network has been established with four Ethernet Routing Switch (ERS) 8600 switches in a switch cluster, two pairs with an Inter Switch Trunks (1ST)

running Split Multi-Link Trunk (SMLT) and Routed Split Multi-Link Trunking (RSMLT). The traffic filters are required to block specific source IP addresses to be

forwarded through the core.

How should these filters be set up?

- A. Configure the filters on the 1ST first before any other ports.
- B. Apply the filters to all ports that receive traffic from outside the immediate switch cluster.
- C. Configure the filters on the ports first and then the 1ST.
- D. Apply the filters to the edge switches and never on the switch cluster ERS 8600 switches.

Correct Answer: D

QUESTION 8

An Ethernet routing switch (ERS) 4550T-PWR has been deployed with a single AC power supply and is currently supporting 20 VoIP telephones with power over Ethernet (PoE). each with a power draw of 8 Watts when offhook. The network engineer has requested the addition of 5 Wireless Access points (WAPs) to the ERS 4550T-PWR. Each WAP supports PoE and requires 12 Watts of power.

What is the outcome of the addition of the WAPs to the ERS 4550T-PWR?

- A. The 4550T-PWR will have sufficient power to support the 20 VoIP telephones and 5 WAP devices,
- B. The addition of a second AC power supply will be required to provide sufficient power to the ERS -4550T-PWR to Support all of-the PoE devices.
- C. The addition of a Redundant Power Supply 15 will be required to provide sufficient power to ensure the VoIP phones and WAP function property.
- D. the power requirement of the WAP exceeds the individual port maximum power rating of the ERS 4550T-PWR and will therefore require an external power source.

Correct Answer: A

QUESTION 9

A technician is setting up switch clustering using Split Multi-Link Trunking (SMLT). Which link is configured between the SMLT cluster switches?

- A. Inter-Switch Trunk (IST)
- B. Multi link Trunk (MLT)

C. Split Multi Link Trunk (SMLT)

D. LAG Trunk

Correct Answer: A

QUESTION 10

The Ethernet Routing Switch (ERS) 8600 switch includes a means to fine tune the memory resources by allowing the record allocations to be allowed. An ERS 8600 running Release 5.0 needs to be configured to be optimized for multicast traffic.

Which command alters the ERS 8600 to increase the default allocation of Multicast by 50 percent?

A. Config sys set record record reserve MGID + 50

B. Config sys set max-vlan-resource-reservation 4096

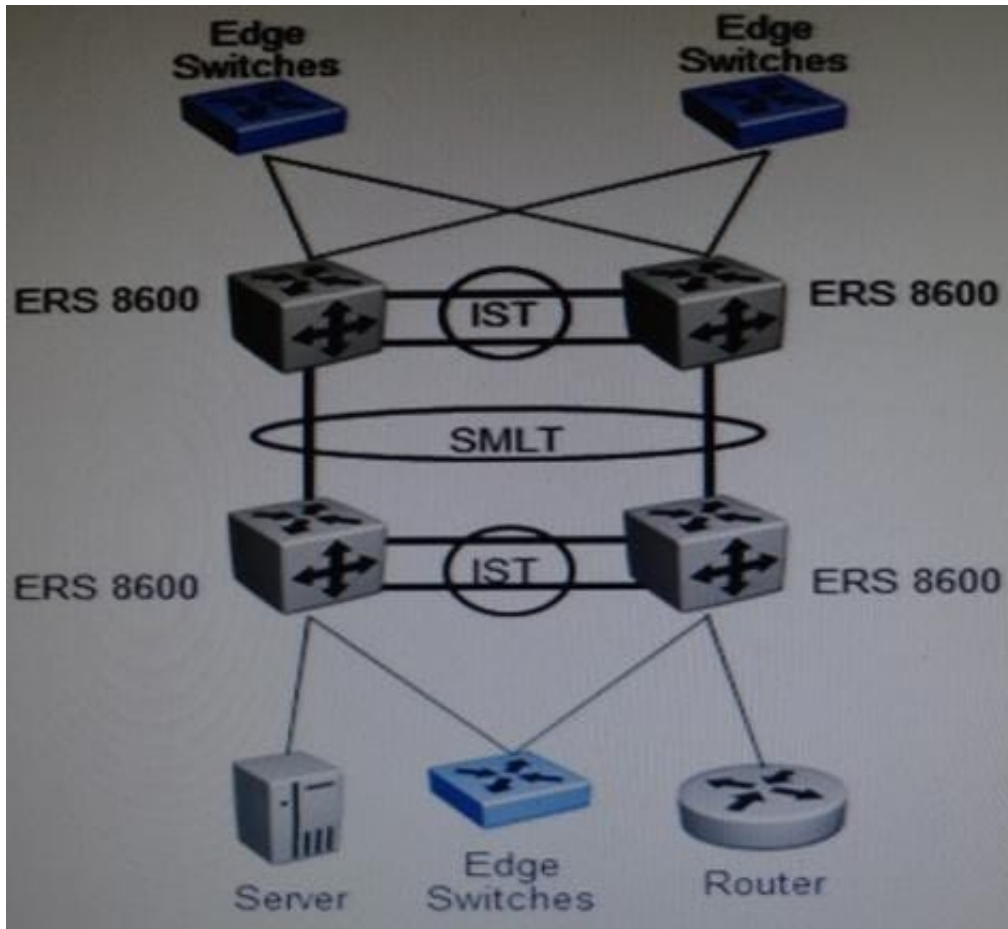
C. Config sys set show sys mgid usage

D. Config sys set multicast-resource-reservation 3073

Correct Answer: D

QUESTION 11

Refer to the exhibit.



A campus network has been established with four Ethernet Routing Switch (ERS) 8600 switches in a switch cluster, two pairs with an Inter Switch Trunks (IST) running Split Multi Link Trunk (SMLT) and Routed Split Multi-Link Trunking (RSMLT). The traffic filters are required to block specific source IP addresses to be forwarded through the core.

With reference to the exhibit, how should these filters be set up?

- A. Configure the filters on the 1ST first before any other ports.
- B. Apply the filters to all ports that receive traffic from outside the immediate switch cluster.
- C. Configure the filters on the ports first and then the IST.
- D. Configure and apply all the filters on the two core IST links only

Correct Answer: B

QUESTION 12

The trace level 9 3 command accomplish?

- A. It captures BGP events at a terse level.
- B. It captures packets copied to the CPU at a verbose level.
- C. It shows CPU utilization.

D. It captures RCC IP events at verbose level.

Correct Answer: B