

**100%** Money Back  
**Guarantee**

**Vendor:**Alcatel-Lucent

**Exam Code:**4A0-108

**Exam Name:**Alcatel-Lucent Multicast Protocols

**Version:**Demo

### QUESTION 1

Which of the following services is provided by the use of PIM as a multicast routing protocol?

- A. Authentication
- B. Guaranteed delivery
- C. Device security
- D. Prevention of forwarding loops
- E. Prevention of Denial of Service attacks

Correct Answer: D

---

### QUESTION 2

Which of the following commands will verify the PIM DR on an interface on the Alcatel-Lucent 7750 SR?

- A. Show router pim status
- B. Show router pim neighbor
- C. Show router pim interface
- D. Show router pim statistics

Correct Answer: C

---

### QUESTION 3

Which of the following is NOT a characteristic of multicast?

- A. Multicast relies on an existing IP routing infrastructure.
- B. Multicast traffic may follow a different path than unicast traffic between the same two points.
- C. A distinct multicast topology can be created instead of using the unicast topology.
- D. When PIM is used, the unicast routing topology has no impact on the multicast topology.

Correct Answer: D

---

### QUESTION 4

Which of the following about PIM messages for IPv6 multicast routing is FALSE?

- A. Hello and Join/Prune messages use All-PIM-Routers multicast address (FF02::D) as destination.

- B. Register messages use the RP's global unicast IPv6 address as destination.
- C. Hello and Join/prune messages use the outgoing interface's global unicast IPv6 address as source address.
- D. Register messages use the outgoing interface's global unicast IPv6 address as source address.

Correct Answer: C

### QUESTION 5

What is the position of the router shown in the exhibit?

```

A:RouterA# show router pim group type sg detail
=====
PIM Source Group ipv4
=====
Group Address      : 239.13.13.13
Source Address     : 192.168.100.99
RP Address         : 10.10.10.10
Flags              : spt                               Type              : (S,G)
MRIB Next Hop     : 192.168.100.99
MRIB Src Flags    : direct                           Keepalive Timer Exp: 0d 00:00:53
Up Time           : 0d 00:02:38                       Resolved By        : rtable-u

Up JP State       : Joined                             Up JP Expiry       : 0d 00:00:00
Up JP Rpt        : Pruned                             Up JP Rpt Override : 0d 00:00:00

Register State    : Pruned                             Register Stop Exp  : 0d 00:00:04
Reg From Anycast RP: No

Rpf Neighbor      : 192.168.100.99
Incoming Intf     : Int-1
Outgoing Intf List : Int-2

Curr Fwding Rate  : 1030.9 kbps
Forwarded Packets : 12790                               Discarded Packets  : 0
Forwarded Octets  : 17302792                          RPF Mismatches     : 0
Spt threshold     : 0 kbps                             ECMP opt threshold : 7
Admin bandwidth  : 1 kbps                               Preference         : 0
=====
Groups : Clearer pictures and no water-mask in the Full Product
=====

```

- A. The first hop router from the source
- B. The RP
- C. One router upstream on the Shared Path Tree from the diverging router
- D. The last hop router from the source

Correct Answer: A

### QUESTION 6

Which of the following regarding VRF Route Import extended community is TRUE?

- A. It is used to support UMH selection in Inter-AS MVPN.
- B. It is a new extended community added only to MVPN multicast routes.
- C. It contains Global Administrator and Local Administrator fields.
- D. It contains the AS number of the source PE.

Correct Answer: C

---

### QUESTION 7

Which protocol is used to establish the I-PMSI in Draft Rosen?

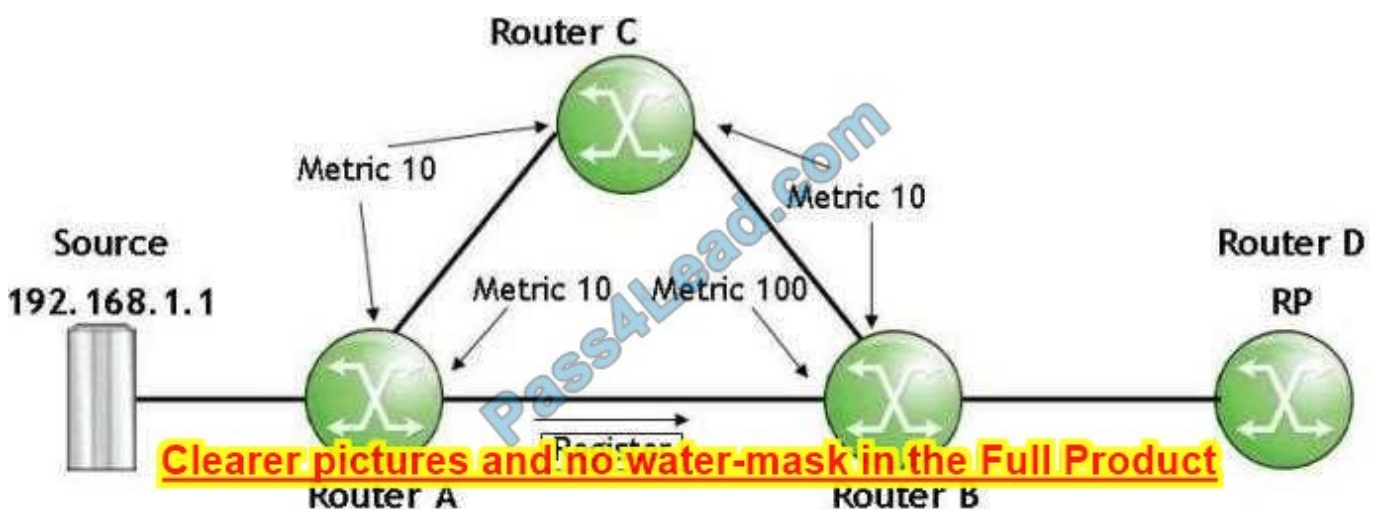
- A. PIM DM
- B. PIM ASM
- C. PIM SSM
- D. Either PIM ASM or PIM SSM

Correct Answer: B

---

### QUESTION 8

Click the exhibit.



The interface's IGP metric is as shown, and PIM is using the unicast table for the RPF-check. What happens when Router B receives a register message on its interface facing Router A?

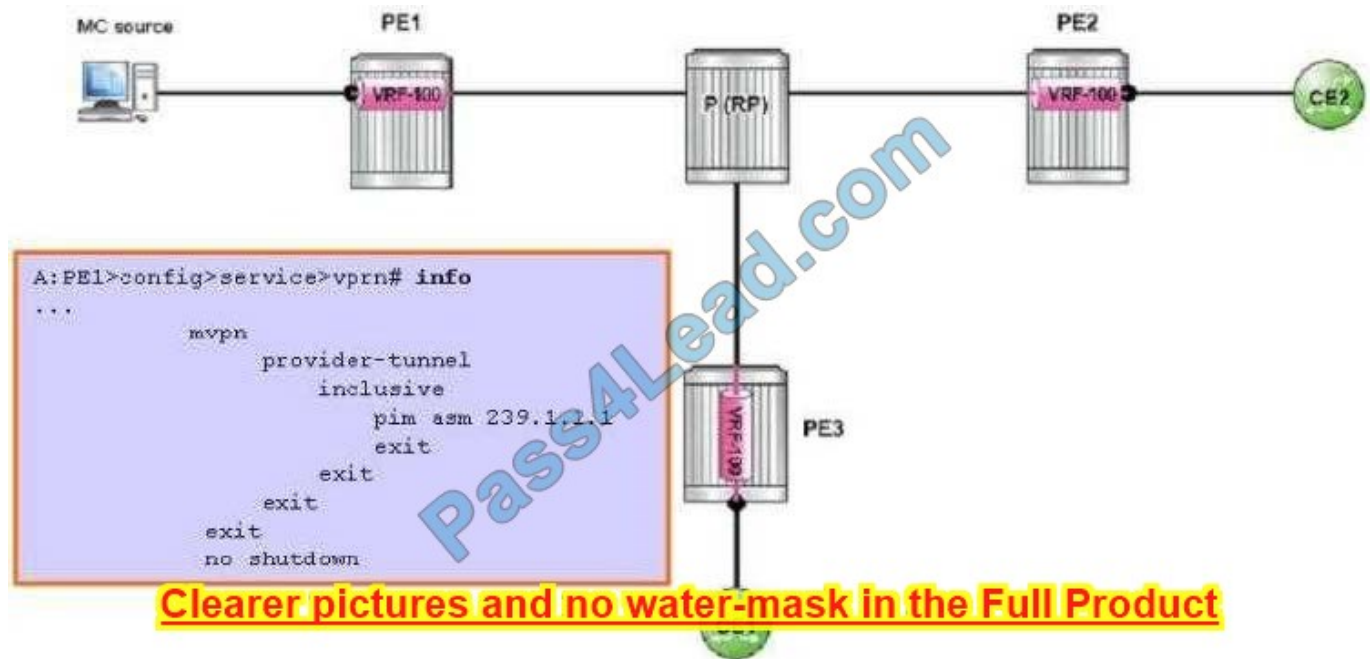
- A. Router B discards the register message, as the RPF-check fails.

- B. Router B forwards the register message to Router D (RP) according to its routing table.
- C. Router B forwards the register message out of all the interfaces in its (239.1.1.1) entry's outgoing interface list.
- D. Router B forwards the register message out of all the interfaces in its (192.168.1.1,239.1.1.1) entry's outgoing interface list.

Correct Answer: B

**QUESTION 9**

Click the exhibit.



If the configuration shown is applied to all PE routers, and all other configuration is complete, how many neighbors are displayed in the output of the command "PE1= show router 100 pim neighbor"?

- A. There is one PIM neighbor.
- B. There are two PIM neighbors.
- C. There are three PIM neighbors.
- D. There is no PIM neighbor in router 100. All the PIM neighbors are in the base router.

Correct Answer: B

**QUESTION 10**

Which of the following regarding the Source Path Tree is TRUE?

- A. The RP is the root of the tree.

- B. It is represented by a (\*, G) entry.
- C. It is the initial forwarding path in ASM mode.
- D. It can be created without the RP.

Correct Answer: D

**QUESTION 11**

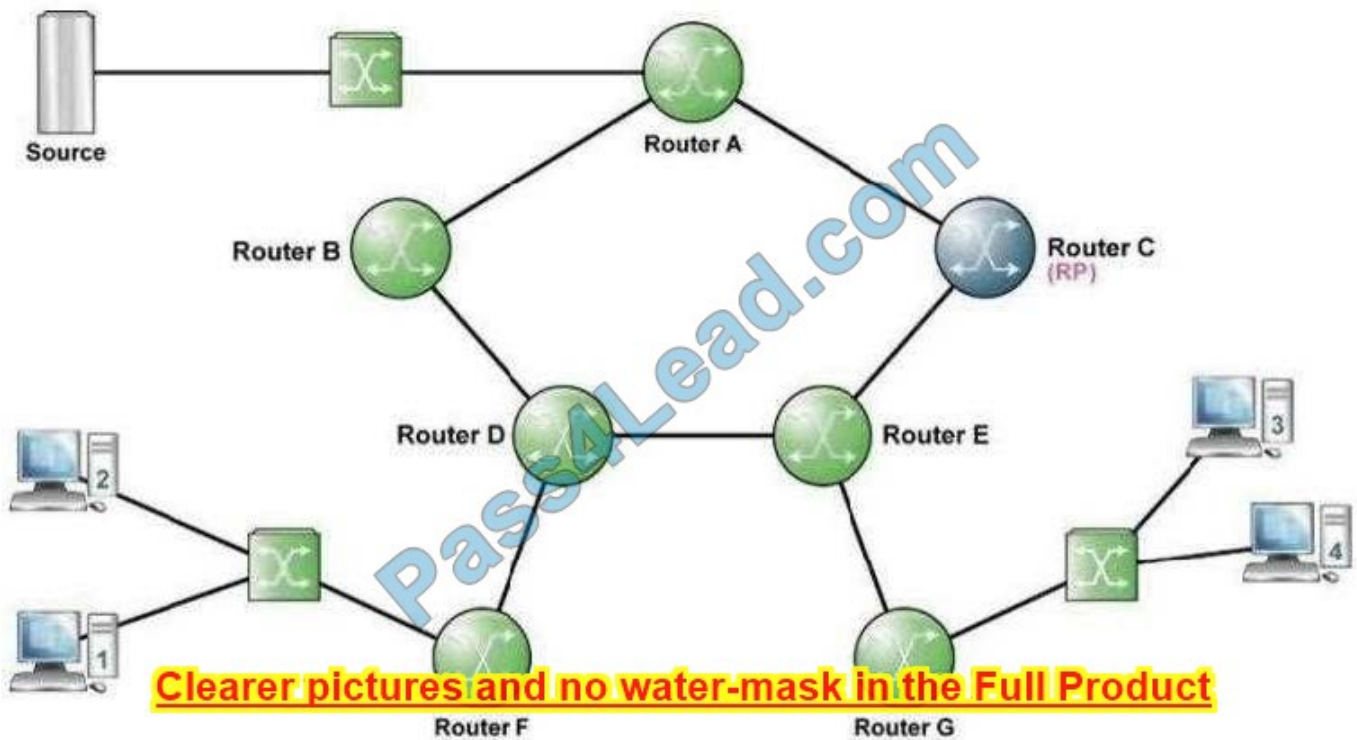
Which of the following about the I-PMSI is TRUE?

- A. The I-PMSI enables a PE to transmit packets to a subset of PEs in the MVPN.
- B. An I-PMSI cannot be instantiated by MPLS P2MP P-tunnels.
- C. The I-PMSI is created and signaled by PIM or BGP Auto Discovery.
- D. An I-PMSI can be reused in multiple MVPNs.

Correct Answer: C

**QUESTION 12**

Refer to the following exhibit.



Assuming all links have an equal metric in the IGP, where will the Source Path Tree have been created if Receiver 2 and Receiver 3 have joined the multicast group but the source is not sending?

- A. Router G-E-C-A
- B. Router F-D-B-A
- C. Router C-A
- D. There won't be a Source Path Tree

Correct Answer: D

To Read the [Whole Q&As](#), please purchase the [Complete Version](#) from [Our website](#).

## Try our product !

100% Guaranteed Success

100% Money Back Guarantee

365 Days Free Update

Instant Download After Purchase

24x7 Customer Support

Average 99.9% Success Rate

More than 800,000 Satisfied Customers Worldwide

Multi-Platform capabilities - [Windows](#), [Mac](#), [Android](#), [iPhone](#), [iPod](#), [iPad](#), [Kindle](#)

## Need Help

Please provide as much detail as possible so we can best assist you.

To update a previously submitted ticket:



 <p><b>One Year Free Update</b> Free update is available within One Year after your purchase. After One Year, you will get 50% discounts for updating. And we are proud to boast a 24/7 efficient Customer Support system via Email.</p>	 <p><b>Money Back Guarantee</b> To ensure that you are spending on quality products, we provide 100% money back guarantee for 30 days from the date of purchase.</p>	 <p><b>Security &amp; Privacy</b> We respect customer privacy. We use McAfee's security service to provide you with utmost security for your personal information &amp; peace of mind.</p>
---	---	--

Any charges made through this site will appear as Global Simulators Limited.

All trademarks are the property of their respective owners.