

100% Money Back
Guarantee

Vendor:Cisco

Exam Code:500-260

Exam Name:Cisco ASA Express Security

Version:Demo

QUESTION 1

A security administrator suspects that an internal system has been infected by malware and communicates with an external server.

Which Cisco ASA NGFW license must the administrator have to detect and monitor the unauthorized command and control network traffic?

- A. AVC
- B. WSE
- C. CWS
- D. Botnet traffic

Correct Answer: D

QUESTION 2

Refer to the exhibit.

#	Enabled	Source	Destina...	Service	Action	Description
Global (2 rules)									
1	<input checked="" type="checkbox"/>	any	any	http	Permit				
2	<input type="checkbox"/>	any	any	IP	Deny				Implicit rule

Which traffic is permitted on the inside interface without any interface ACLs configured?

- A. any IP traffic input to the inside interface
- B. any IP traffic input to the inside interface destined to any lower security level interfaces
- C. only HTTP traffic input to the inside interface
- D. only HTTP traffic output from the inside interface
- E. No input traffic is permitted on the inside interface
- F. No output traffic is permitted on the inside interface

Correct Answer: C

QUESTION 3

On Cisco ASA Software Version 8.3 and later, which two statements correctly describe the NAT table or NAT operations? (Choose two.)

- A. The NAT table has four sections.
- B. Manual NAT configurations are found in the first (top) and/or the last (bottom) section(s) of the NAT table.
- C. Auto NAT also is referred to as Object NAT.
- D. Auto NAT configurations are found only in the first (top) section of the NAT table.
- E. The order of the NAT entries in the NAT table is not relevant to how the packets are matched against the NAT table.
- F. Twice NAT is required for hosts on the inside to be accessible from the outside.

Correct Answer: BC

QUESTION 4

In one custom dynamic application, the inside client connects to an outside server using TCP port 4444 and negotiates return client traffic in the port range of 5000 to 5500. The server then starts streaming UDP data to the client on the negotiated port in the specified range. Which Cisco ASA feature or command supports this custom dynamic application?

- A. TCP normalizer
- B. TCP intercept
- C. ip verify command
- D. established command
- E. tcp-map and tcp-options commands
- F. set connection advanced-options command

Correct Answer: D

QUESTION 5

Refer to the exhibit.

```
failover
failover lan unit primary
failover lan interface MYFAILOVER GigabitEthernet0/2
failover interface ip MYFAILOVER 172.16.5.1 255.255.255.0 standby 172.16.5.10
failover link MYFAILOVER GigabitEthernet0/2
failover key cisco123
failover group 1
primary
preempt
failover group 2
secondary
preempt
```

Which command enables the stateful failover option?

- A. failover link MYFAILOVER GigabitEthernet0/2
- B. failover lan interface MYFAILOVER GigabitEthernet0/2
- C. failover interface ip MYFAILOVER 172.16.5.1 255.255.255.0 standby 172.16.5.10
- D. preempt
- E. failover group 1
- F. primary
- G. failover lan unit primary

Correct Answer: A

QUESTION 6

An inside client on the 10.0.0.0/8 network connects to an outside server on the 172.16.0.0/16 network using TCP and the server port of 2001. The inside client negotiates a client port in the range between UDP ports 5000 to 5500. The outside server then can start sending UDP data to the inside client on the negotiated port within the specified UDP port range. Which two options show the required Cisco ASA command(s) to allow this scenario? (Choose two.)

- A. access-list INSIDE line 1 permit tcp 10.0.0.0 255.0.0.0 172.16.0.0 255.255.0.0 eq 2001 access-group INSIDE in interface inside
- B. access-list INSIDE line 1 permit tcp 10.0.0.0 255.0.0.0 172.16.0.0 255.255.0.0 eq 2001 access-list INSIDE line 2 permit udp 10.0.0.0 255.0.0.0 172.16.0.0 255.255.0.0 eq established access-group INSIDE in interface inside
- C. access-list OUTSIDE line 1 permit tcp 172.16.0.0 255.255.0.0 eq 2001 10.0.0.0 255.0.0.0 access-list OUTSIDE line 2 permit udp 172.16.0.0 255.255.0.0 10.0.0.0 255.0.0.0 eq 5000-5500 access-group OUTSIDE in interface outside
- D. access-list OUTSIDE line 1 permit tcp 172.16.0.0 255.255.0.0 eq 2001 10.0.0.0 255.0.0.0 access-list OUTSIDE line 2 permit udp 172.16.0.0 255.255.0.0 10.0.0.0 255.0.0.0 eq established access-group OUTSIDE in interface outside

E. established tcp 2001 permit udp 5000-5500

F. established tcp 2001 permit from udp 5000-5500

G. established tcp 2001 permit to udp 5000-5500

Correct Answer: AG

QUESTION 7

Drag and drop each advanced application deployment option on the left to its correct definition on the right.

Select and Place:

Application plug-ins	Provide users with native application client access to enterprise resources
Smart tunnels	Provides users with thin application client access to enterprise resources
Port forwarding	Provides users with native application client access to enterprise resources on Linux workstations or older Cisco ASA software versions

Correct Answer:

	Smart tunnels
	Application plug-ins
	Port forwarding

QUESTION 8

Which license is required on the Cisco ASA NGFW for an administrator to manage it securely from a remote laptop?

A. AnyConnect Endpoint Assessment

B. AnyConnect Premium

C. AnyConnect for Mobile

D. AnyConnect for Cisco VPN phone

E. Cisco Secure Desktop

Correct Answer: B

QUESTION 9

Which application is required to enable Microsoft Active Directory identity integration for FirePOWER services?

A. Sourcefire User Agent

B. Microsoft Active Directory Manager

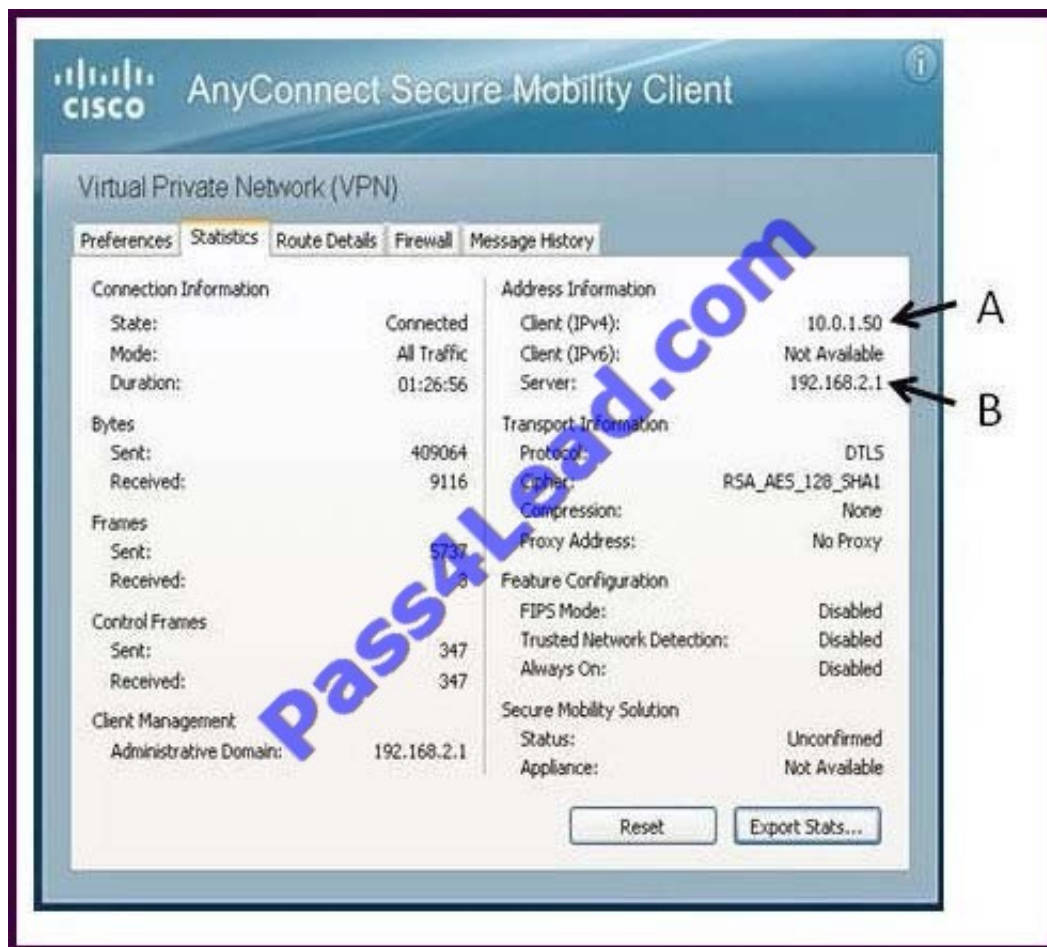
C. Cisco Directory Agent

D. Microsoft Active Directory Agent

Correct Answer: A

QUESTION 10

Refer to the exhibit.



After a remote user established a Cisco AnyConnect session from a wireless card through the Cisco ASA appliance of a partner to a remote server, the user opened the Cisco AnyConnect VPN Client Statistics Details screen. What are the two sources of the IP addresses that are marked A and B? (Choose two.)

- A. IP address that is assigned to the wireless Ethernet adapter of the remote user
- B. IP address that is assigned to the remote user from the Cisco ASA address pool
- C. IP address of the Cisco ASA physical interface of the partner
- D. IP address of the Cisco ASA virtual HTTP server of the partner
- E. IP address of the default gateway router of the remote user
- F. IP address of the default gateway router of the partner

Correct Answer: BC

QUESTION 11

You are configuring bookmarks for the clientless SSL VPN portal without the use of plug-ins. Which three bookmark types are supported? (Choose three.)

- A. RDP

B. HTTP

C. FTP

D. CIFS

E. SSH

F. Telnet

Correct Answer: BCD

QUESTION 12

Which option best describes the role of an IoC?

A. tags on a host that indicate that an infection event has occurred

B. statically assigned target values on a host

C. a flag that indicates that a host operating system needs patching

D. an impact flag of an infection event

Correct Answer: A

To Read the [Whole Q&As](#), please purchase the [Complete Version](#) from [Our website](#).

Try our product !

100% Guaranteed Success

100% Money Back Guarantee

365 Days Free Update

Instant Download After Purchase

24x7 Customer Support

Average **99.9%** Success Rate

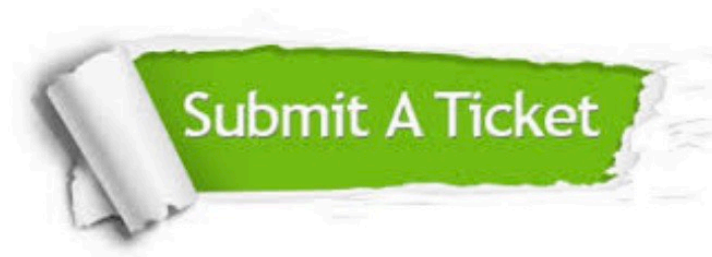
More than **800,000** Satisfied Customers Worldwide

Multi-Platform capabilities - **Windows, Mac, Android, iPhone, iPod, iPad, Kindle**

Need Help

Please provide as much detail as possible so we can best assist you.

To update a previously submitted ticket:



 One Year Free Update <p>Free update is available within One Year after your purchase. After One Year, you will get 50% discounts for updating. And we are proud to boast a 24/7 efficient Customer Support system via Email.</p>	 Money Back Guarantee <p>To ensure that you are spending on quality products, we provide 100% money back guarantee for 30 days from the date of purchase.</p>	 Security & Privacy <p>We respect customer privacy. We use McAfee's security service to provide you with utmost security for your personal information & peace of mind.</p>
---	---	--

Any charges made through this site will appear as Global Simulators Limited.

All trademarks are the property of their respective owners.