

100% Money Back
Guarantee

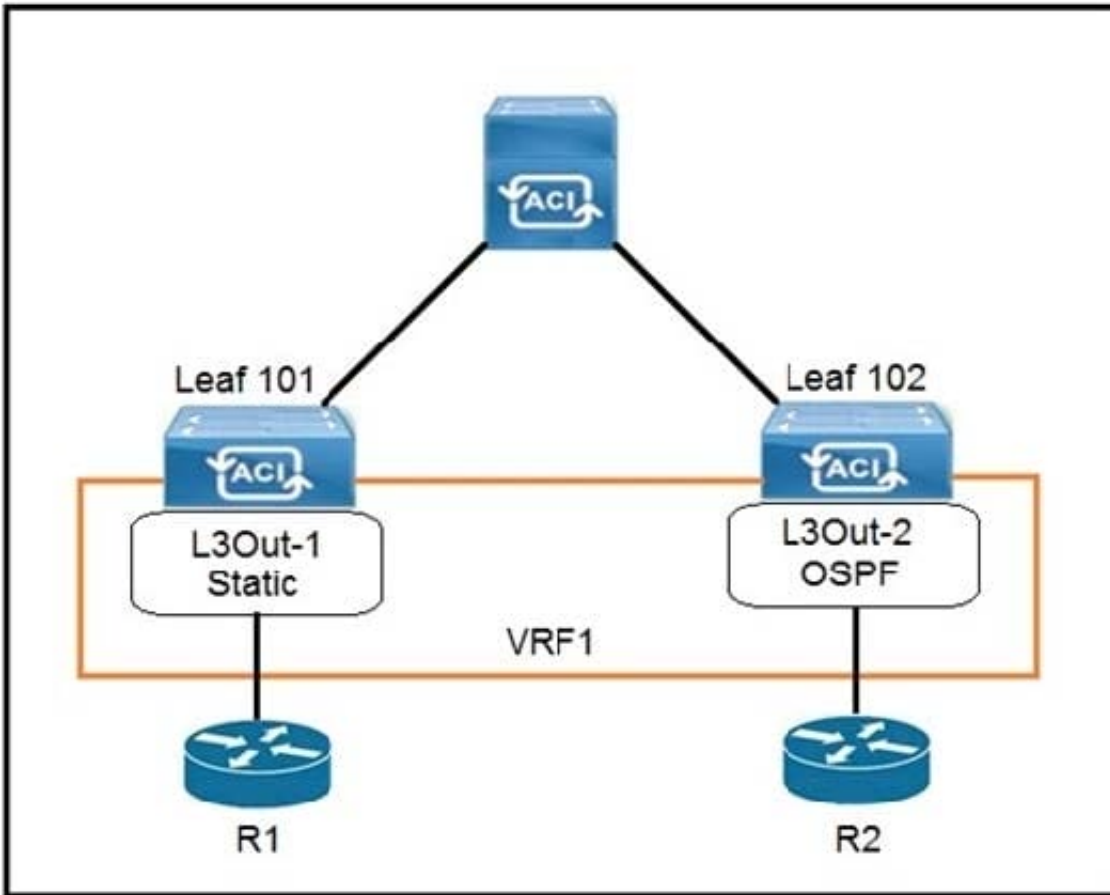
Vendor:Cisco

Exam Code:600-660

Exam Name:Implementing Cisco Application Centric
Infrastructure - Advanced

Version:Demo

QUESTION 1

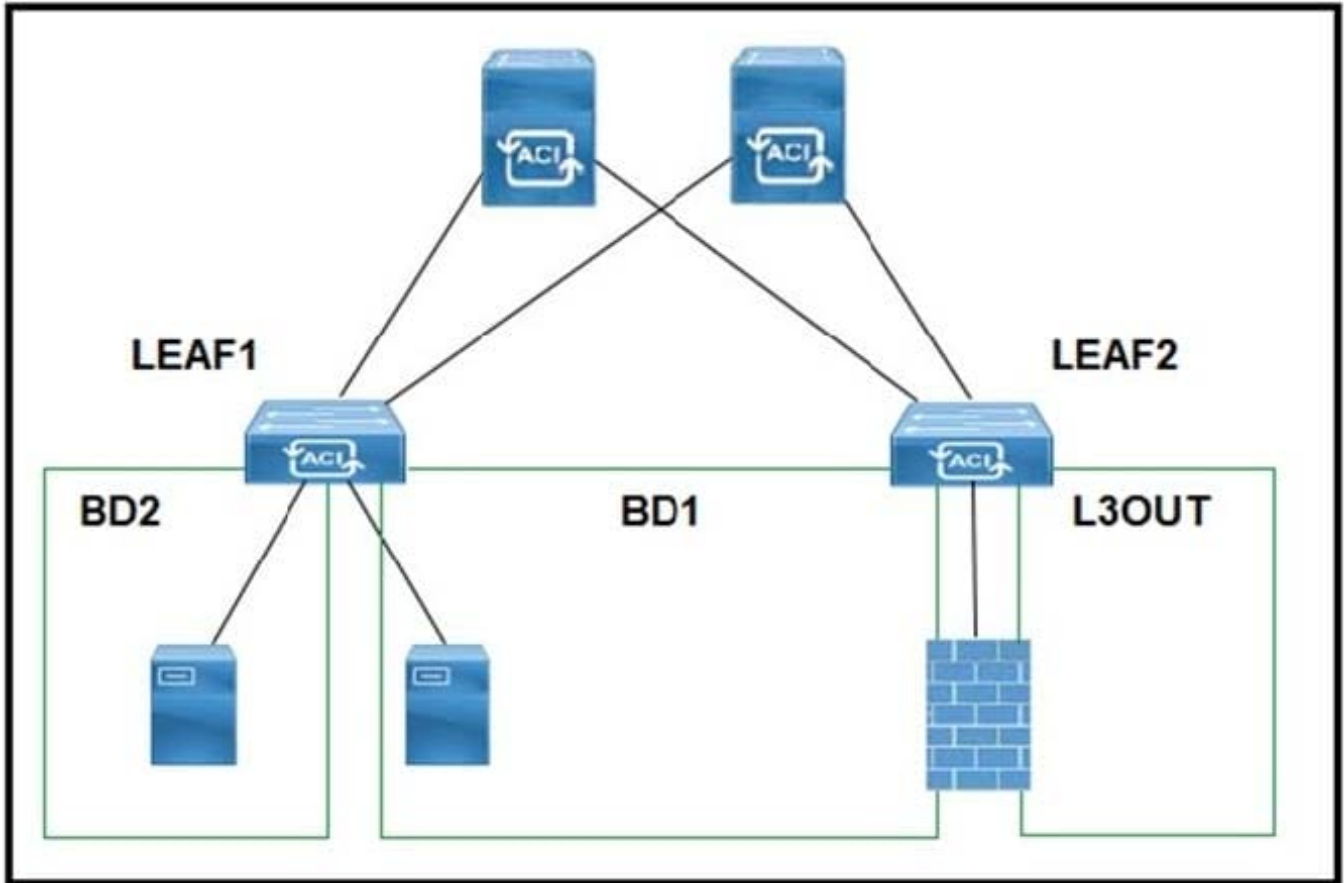


Refer to the exhibit. The 0.0.0.0/0 is configured as a default static route on L3Out-1. Which action should be taken for the 0.0.0.0/0 prefix to advertise out on L3Out-2 OSPF?

- A. Enable Shared Security Import Subnet
- B. Enable Aggregate Export Subnet
- C. Enable Shared Route Control Subnet
- D. Enable Export Route Control Subnet

Correct Answer: B

QUESTION 2

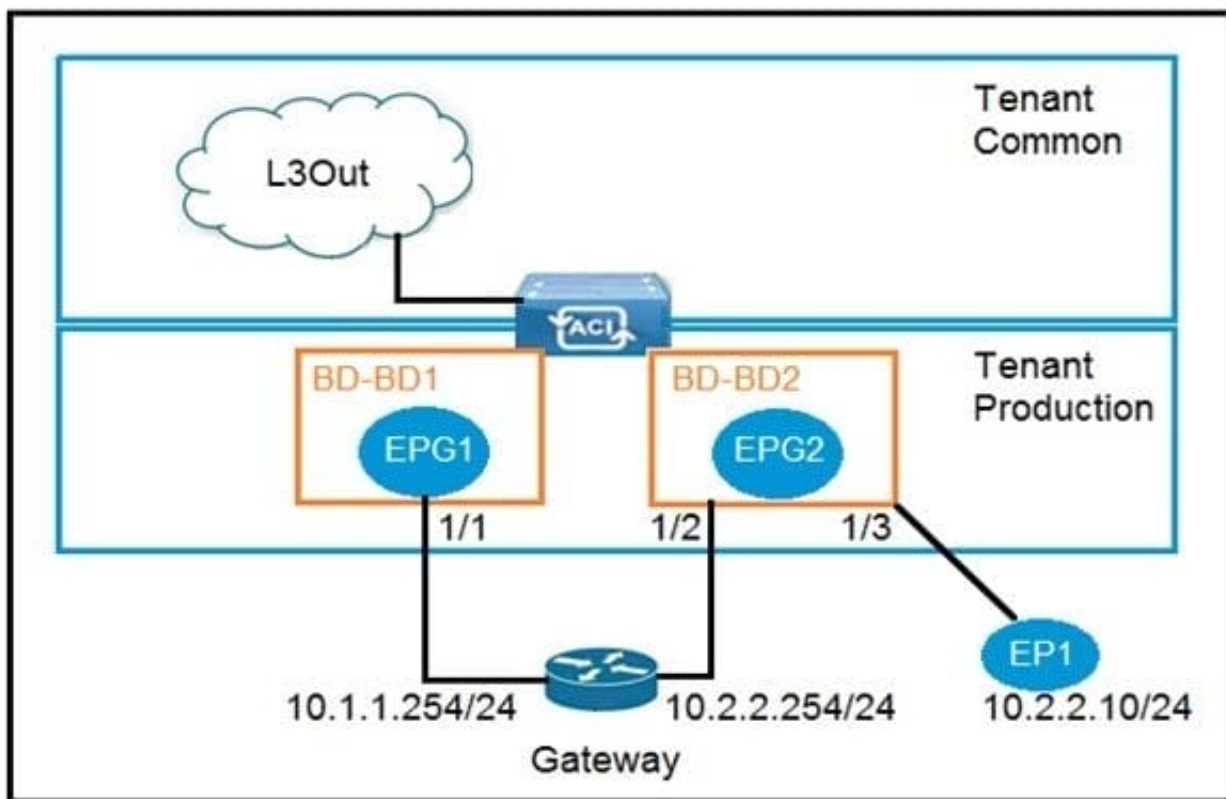


Refer to the exhibit. A customer experiences resource overconsumption on one of its border leaf switches. Which action should be taken to reduce the consumption on this switch?

- A. Disable VRF Policy Control Enforcement
- B. Disable IP Data Plane Learning
- C. Migrate L3Outs to another switch
- D. Disable Remote EP Learning

Correct Answer: B

QUESTION 3



Refer to the exhibit. An engineer wants to avoid connectivity problems for the endpoint EP1 when it reaches an external L3Out network through the gateway 10.2.2.254/24. Which two configurations must be implemented in BD-BD2? (Choose two.)

- A. Disable unicast routing
- B. Enable IP data plane learning for the VRF
- C. Disable ARP flooding
- D. Enable ARP flooding
- E. Enable unicast routing

Correct Answer: AC

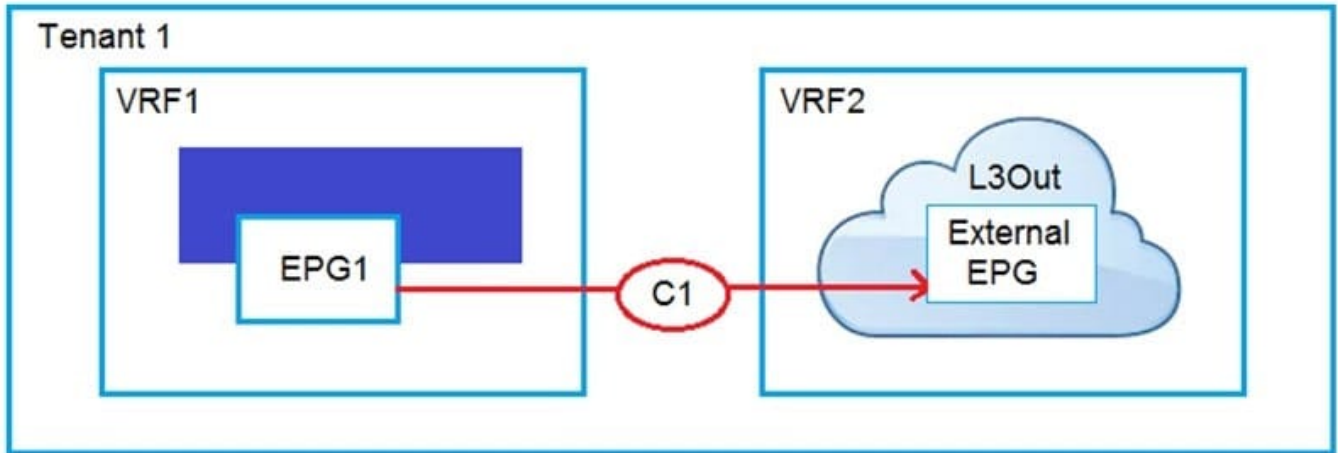
QUESTION 4

Which approach does Cisco ACI use to achieve multidestination packet forwarding between leaf switches in the same fabric?

- A. Map VXLAN VTEP to the multicast group
- B. Map VXLAN to PIM-SM protocol
- C. Map VXLAN VNI to the multicast group
- D. Map VXLAN to PIM-DM protocol

Correct Answer: C

QUESTION 5



Refer to the exhibit. An engineer must have communication between EPG1 in VRF1 and External EPG in VRF2. Which three actions should be taken for the defined subnets in the L3Out External EPG to accomplish this goal? (Choose three.)

- A. Enable Shared Route Control Subnet
- B. Enable External Subnets for External EPG
- C. Enable Export Route Control Subnet
- D. Enable Shared Security Import Subnet
- E. Enable Aggregate Shared Routes
- F. Enable Import Route Control Subnet

Correct Answer: CDF

Reference: <https://www.cisco.com/c/en/us/solutions/collateral/data-center-virtualization/application-centric-infrastructure/guide-c07-743150.html>

QUESTION 6

An engineer configures a new Cisco ACI Multi-Pod and must set up the link between the spine and the IPN device. Which three actions should be taken to accomplish this goal? (Choose three.)

- A. Enable MP-BGP routing
- B. Enable BIDIR-PIM protocol
- C. Enable PIM-SM protocol
- D. Enable OSPF routing

- E. Enable IS-IS routing
- F. Enable DHCP relay

Correct Answer: ABF

QUESTION 7

Which feature should be disabled on a bridge domain when a default gateway for endpoints is on an external device instead of a Cisco ACI bridge domain SVI?

- A. unicast routing
- B. ARP flooding
- C. unknown unicast flooding
- D. proxy ARP

Correct Answer: C

QUESTION 8

Cisco ACI fabric is migrated from network-centric mode to application-centric mode. What is possible in an application-centric design?

- A. remapping of VLAN pools
- B. migration of bare metal servers to virtual machines
- C. creation of additional EPGs under one bridge domain
- D. Cisco ACI VMM integration with hypervisors

Correct Answer: C

QUESTION 9

Which two actions should be taken to ensure a scalable solution when multiple EPGs in a VRF require unrestricted communication? (Choose two.)

- A. Configure a taboo contract between the EPGs that require unrestricted communication between each other.
- B. Enable Preferred Group Member under the EPG Collection for VRF section.
- C. Set the VRF policy control enforcement preference to Unenforced.
- D. Set the EPGs that require unrestricted communication between each other as preferred group members.
- E. Set the EPGs that require policy enforcement between each other as preferred group members.

Correct Answer: CD

Reference: https://www.cisco.com/c/en/us/td/docs/switches/datacenter/aci/apic/sw/4-x/basic-configuration/Cisco-APIC-Basic-Configuration-Guide-42x/Cisco-APIC-Basic-Configuration-Guide-42x_chapter_0110.html

QUESTION 10

What are two characteristics of network-centric design in Cisco ACI? (Choose two.)

- A. There is open communication between EPGs
- B. EPGs are used for microsegmentation
- C. EPGs are different security zones
- D. Applications define the network requirements
- E. A bridge domain has one subnet and one EPG

Correct Answer: BE

QUESTION 11

An existing Cisco ACI Multi-Site setup with default fabric settings contains endpoints that communicate with an MTU of 1500. What is the minimum MTU value that must be supported by the ISN to allow control plane endpoint information exchange between sites?

- A. 9000
- B. 1554
- C. 9100
- D. 1600

Correct Answer: C

Reference: <https://www.cisco.com/c/en/us/support/docs/cloud-systems-management/application-policy-infrastructure-controller-apic/214270-configure-aci-multi-site-deployment.html>

QUESTION 12

In a Cisco ACI Multi-Site fabric, the Inter-Site BUM Traffic Allow option is enabled in a specific stretched bridge domain. What is used to forward BUM traffic to all endpoints in the same broadcast domain?

- A. ingress replication on the spines in the source site
- B. egress replication on the source leaf switches
- C. egress replication on the destination leaf switches

D. ingress replication on the spines in the destination site

Correct Answer: D

Reference: <http://yves-louis.com/DCI/?p=1277>