

**100%** Money Back  
**Guarantee**

**Vendor:**Cisco

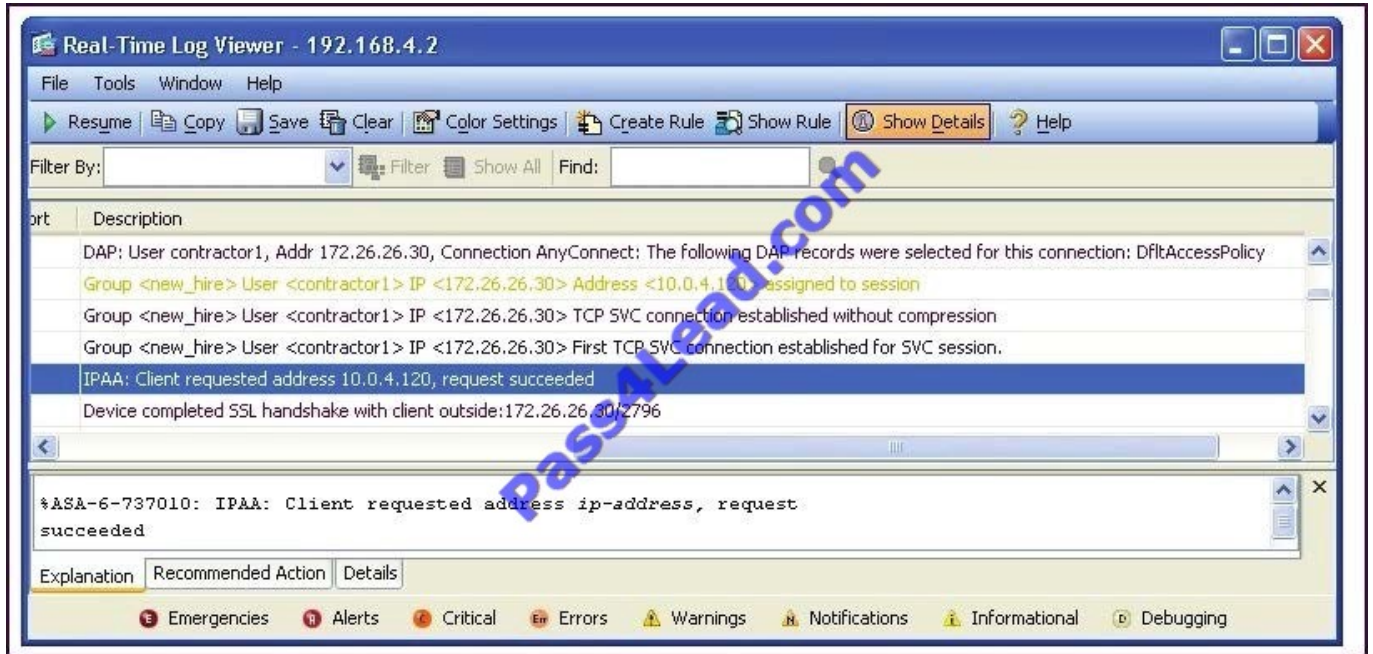
**Exam Code:**642-647

**Exam Name:**Deploying Cisco ASA VPN Solutions  
(VPN v1.0)

**Version:**Demo

## QUESTION 1

Refer to the exhibit.



After being with the company for more than six months, Sue is no longer considered a new hire employee. In converting her from a new hire to a full-time employee, her SSL VPN address will change from the "Client requested address 10.0.4.120" to a random address from the employee address pool.

To "disable" the 10.0.4.120 IP address, the network administrator should navigate to which Cisco ASDM pane?

- A. Connection Profile
- B. Group Policies
- C. Local Users
- D. Address Pools

Correct Answer: C

## QUESTION 2

Datagram Transport Layer Security (DTLS) was introduced to solve performance issues. Choose three characteristics of DTLS. (Choose three.)

- A. It uses TLS to negotiate and establish DTLS connections.
- B. It uses DTLS to transmit datagrams.
- C. It is disabled by default.

- D. It uses TLS for data packet retransmission.
- E. It replaces underlying transport layer with UDP 443.
- F. It uses TLS to provide low-latency video application tunneling.

Correct Answer: ABE

**QUESTION 3**

Match the protocol or port number on the left with the correct protocol or application on the right. (Not all items used.)

Select and Place:

Match the protocol or port number on the left with the correct protocol or application on the right. (Not all items used.)

<div style="background-color: #90ee90; border: 1px solid black; text-align: center; padding: 2px;">IP Protocol 50</div>	<div style="background-color: #ffff00; border: 1px solid black; text-align: center; padding: 2px;">NAT Traversal</div>
<div style="background-color: #90ee90; border: 1px solid black; text-align: center; padding: 2px;">IP Protocol 51</div>	<div style="background-color: #ffff00; border: 1px solid black; text-align: center; padding: 2px;">IKE</div>
<div style="background-color: #90ee90; border: 1px solid black; text-align: center; padding: 2px;">UDP Port 500</div>	<div style="background-color: #ffff00; border: 1px solid black; text-align: center; padding: 2px;">ESP</div>
<div style="background-color: #90ee90; border: 1px solid black; text-align: center; padding: 2px;">UDP Port 4500</div>	<div style="background-color: #ffff00; border: 1px solid black; text-align: center; padding: 2px;">IPsec over TCP</div>
<div style="background-color: #90ee90; border: 1px solid black; text-align: center; padding: 2px;">TCP Port 10000</div>	
<div style="background-color: #90ee90; border: 1px solid black; text-align: center; padding: 2px;">TCP Port 443</div>	

Correct Answer:

Match the protocol or port number on the left with the correct protocol or application on the right. (Not all items used.)

<div style="background-color: #90ee90; border: 1px solid black; text-align: center; padding: 2px;">IP Protocol 51</div>	<div style="background-color: #90ee90; border: 1px solid black; text-align: center; padding: 2px;">UDP Port 4500</div>
<div style="background-color: #90ee90; border: 1px solid black; text-align: center; padding: 2px;">TCP Port 443</div>	<div style="background-color: #90ee90; border: 1px solid black; text-align: center; padding: 2px;">UDP Port 500</div>
	<div style="background-color: #90ee90; border: 1px solid black; text-align: center; padding: 2px;">IP Protocol 50</div>
	<div style="background-color: #90ee90; border: 1px solid black; text-align: center; padding: 2px;">TCP Port 10000</div>

**QUESTION 4**

In which three ways can a Cisco ASA security appliance obtain a certificate revocation list? (Choose three.)

- A. FTP
- B. SCEP
- C. TFTP
- D. HTTP
- E. LDAP
- F. SCP

Correct Answer: BDE

---

#### QUESTION 5

An XYZ Corporation systems engineer, while making a sales call on the ABC Corporation headquarters, tried to access the XYZ sales demonstration folder to transfer a demonstration via FTP from an ABC conference room behind the firewall. The engineer could not reach XYZ through the remote-access VPN tunnel. From home the previous day, however, the engineer did connect to the XYZ sales demonstration folder and transferred the demonstration via IPsec over DSL.

To get the connection to work and transfer the demonstration, what should the engineer do?

- A. Change the MTU size on the IPsec client to account for the change from DSL to cable transmission.
- B. Enable the local LAN access option on the IPsec client.
- C. Enable the IPsec over TCP option on the IPsec client.
- D. Enable the clientless SSL VPN option on the PC.

Correct Answer: C

---

#### QUESTION 6

Cisco AnyConnect profiles can be used to set which three options? (Choose three.)

- A. Define a list of VPN gateways that are presented to users upon login.
- B. Define a quarantine VLAN for remote devices that fail a host scan.
- C. Define a guest VLAN to all "noncompany" Cisco IOS WebVPN users.
- D. Define a list of backup servers if primary gateways are unavailable.
- E. Activate the SSL VPN tunnel as part of the Windows login sequence.
- F. Configure the Cisco Secure Desktop vault.

Correct Answer: ADE

---

### QUESTION 7

Refer to the exhibit.

```
ASA5520# show vpn-session anyconnect
Username      : engineer1          Index      : 76
Assigned IP   : 10.0.4.80       Public IP  : 172.26.26.15
Protocol      : Clientless SSL-Tunnel DTLS-Tunnel
License       : AnyConnect Premium
Encryption    : RC4 AES128      Hashing    : SHA1
Bytes Tx      : 63506          Bytes Rx   : 17216
Group Policy  : engineering     Tunnel Group : contractor
Login Time    : 11:35:57 UTC Thu Jul 1 2011
Duration      : 0h:01m:52s
Inactivity    : 0h:00m:00s
NAC Result    : Unknown
VLAN Mapping  : Static          VLAN       : 100
```

A NOC engineer needs to tune some prelogin parameters on an SSL VPN tunnel.

From the information that is shown, where should the engineer navigate to find the prelogin session attributes?

- A. "engineering" Group Policy
- B. "contractor" Connection Profile
- C. "engineer1" AAA/Local Users
- D. DfltGrpPolicy Group Policy

Correct Answer: B

---

### QUESTION 8

Authorization of a clientless SSL VPN defines the actions that a user may perform within a clientless SSL VPN session. Which statement is correct concerning the SSL VPN authorization process?

- A. Remote clients can be authorized by applying a dynamic access policy, which is configured on an external AAA server.
- B. Remote clients can be authorized externally by applying group parameters from an external database.
- C. Remote client authorization is supported by RADIUS and TACACS+ protocols.
- D. To configure external authorization, you must configure the Cisco ASA for cut-through proxy.

Correct Answer: B

---

## QUESTION 9

Which feature is supported when implementing an IPsec VPN configuration using IKEv2?

- A. IKEv2 authentication can be configured to negotiate authentication modes within the IKE policy when using Cisco ASDM.
- B. IKEv2 proposals are identical to IKEv1 policies.
- C. When implementing IKEv2 with a site-to-site VPN, authentication parameters should contain a fallback to PSKs, in case certificate-based authentication fails.
- D. IKEv2 peer authentication can be implemented with asymmetric authentication methods.

Correct Answer: D

## QUESTION 10

Refer to the exhibit.

The screenshot shows the Cisco ASDM configuration interface for Site-to-Site VPN. The main window displays the configuration for 'Certificate to Connection Profile Maps > Rules'. The 'Certificate to Connection Profile Maps' table shows a rule named 'DefaultCertificateMap' with a priority of 3, mapped to the 'DefaultWEBVPNGroup' connection profile. The 'Mapping Criteria' table shows a rule with the field 'Issuer', component 'Common Name (CN)', operator 'Equals', and value 'cisco'. An 'Edit Certificate Matching Rule Criterion' dialog box is open, showing the current rule's details: 'Rule Priority: 3' and 'Mapped to Connect on Profile: DefaultWEBVPNGroup'. The dialog box has fields for 'Field', 'Component', 'Operator', and 'Value', but no buttons to change the mapped profile.

In the Edit Certificate Matching Rule Criterion window, you want to change the Mapped to Connection Profile. However, you cannot perform that action from this window.

Where should you navigate to and what should you do, in order to perform this change?

- A. Edit the entry in the Certificate Management window.
- B. Edit the entry in the Connection Profiles window.
- C. Edit the entry in the Certificate to Connection Profile Maps window.
- D. Edit the entry in IKE Policies window.
- E. Delete this entry in the Mapping Criteria window, and add a new entry in the same location.

Correct Answer: C

---

#### **QUESTION 11**

In Cisco ASA Software Release 8.4.1, which three plug-ins are Cisco ASA-supported plug-ins? (Choose three.)

- A. SSH
- B. TN3270
- C. SCP
- D. RDP
- E. ICA
- F. ARAP

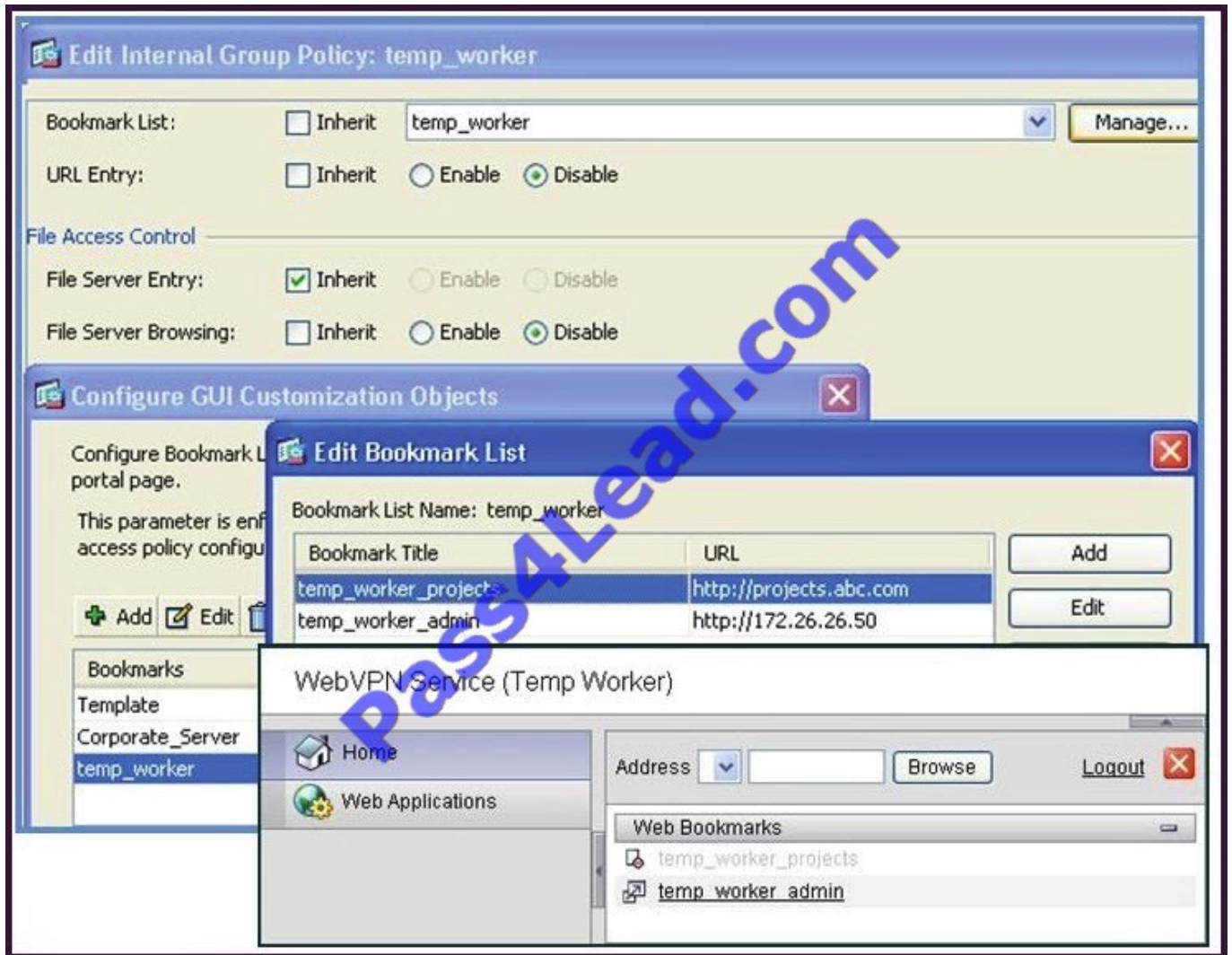
Correct Answer: ADE

---

#### **QUESTION 12**

Refer to the exhibit.





A new network engineer configured the ABC adaptive security appliance with two bookmarks for a new temporary worker. The temporary worker can connect to the administrator server via the temp\_worker\_admin bookmark but cannot

connect to the project server via the temp\_worker\_projects bookmark (which is grayed out). It was determined that the URL and IP addressing information in the GUI screens is correct.

What is wrong with the configuration?

- A. URL Entry should be enabled.
- B. The File Server Entry Inherit parameter should be overwritten and set for enabled.
- C. The DNS server information is incorrect.
- D. File Server Browsing should be enabled.

Correct Answer: C



To Read the [Whole Q&As](#), please purchase the [Complete Version](#) from [Our website](#).

## Try our product !

**100%** Guaranteed Success

**100%** Money Back Guarantee

**365** Days Free Update

**Instant Download** After Purchase

**24x7** Customer Support

Average **99.9%** Success Rate

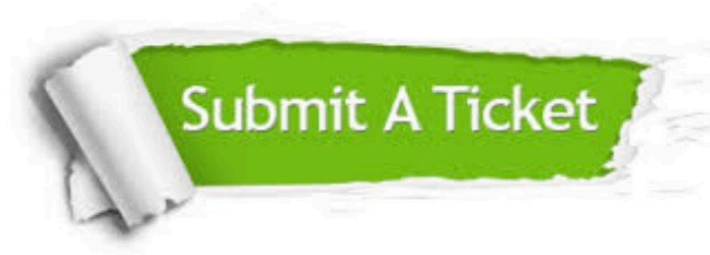
More than **800,000** Satisfied Customers Worldwide

Multi-Platform capabilities - **Windows, Mac, Android, iPhone, iPod, iPad, Kindle**

## Need Help

Please provide as much detail as possible so we can best assist you.

To update a previously submitted ticket:



 <p><b>One Year Free Update</b> Free update is available within One Year after your purchase. After One Year, you will get 50% discounts for updating. And we are proud to boast a 24/7 efficient Customer Support system via Email.</p>	 <p><b>Money Back Guarantee</b> To ensure that you are spending on quality products, we provide 100% money back guarantee for 30 days from the date of purchase.</p>	 <p><b>Security &amp; Privacy</b> We respect customer privacy. We use McAfee's security service to provide you with utmost security for your personal information &amp; peace of mind.</p>
---	---	--

Any charges made through this site will appear as Global Simulators Limited.

All trademarks are the property of their respective owners.