

**100%** Money Back  
**Guarantee**

**Vendor:**Cisco

**Exam Code:**650-127

**Exam Name:**Cisco Connected Grid (Engineer)  
Knowledge Verification

**Version:**Demo

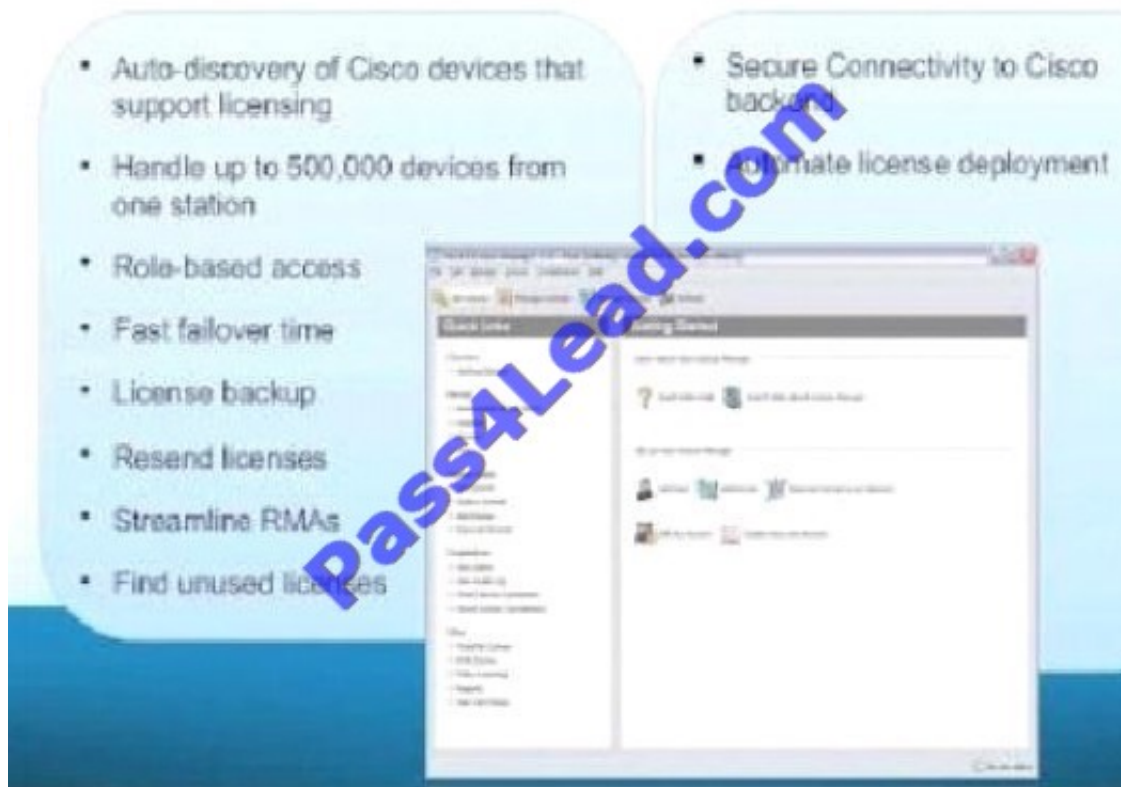
### QUESTION 1

Which feature is supported by Cisco License Manager3.0?

- A. no role-based access
- B. ability to handle up to 500,000 devices
- C. free test license
- D. PDI helpdesk

Correct Answer: B

## Cisco License Manager 3.0



The image displays a list of features for Cisco License Manager 3.0 and a screenshot of the software interface. The features listed are:

- Auto-discovery of Cisco devices that support licensing
- Handle up to 500,000 devices from one station
- Role-based access
- Fast failover time
- License backup
- Resend licenses
- Streamline RMAs
- Find unused licenses
- Secure Connectivity to Cisco back...
- Optimize license deployment

The screenshot shows the Cisco License Manager 3.0 interface, which includes a navigation pane on the left and a main content area on the right. A large watermark "Pass4Lead.com" is overlaid diagonally across the image.

### QUESTION 2

What version of Cisco Configuration Professional support CGR and CGS products?

- A. version 2.0 or higher
- B. version 2.3 or higher

C. version 2.0 or lower

Correct Answer: B

---

### **QUESTION 3**

Which statement is correct concerning Goose messaging?

- A. K provides Type-1 messages at a 3- to 10-second delay.
- B. It uses of cost-effective, well-known protocols (Ethernet and IP).
- C. It is a proprietary protocol.
- D. It has no data monitoring.

Correct Answer: A

---

### **QUESTION 4**

What is the total support wattage on CGS-2520-16S-8PC on PoE when two power supplies are installed?

- A. 170 W
- B. 65 W
- C. 20 W
- D. 210 W

Correct Answer: A

## Power Over Ethernet Support

- PoE is supported only in CGS-2520-16S-8PC.
  - Architecture is similar to Catalyst 3750E family switches.
  - One Power Supply can support up to 65W and two Power Supplies support up to 170W of PoE.
  - Powering all the 8 FE ports will require 2 Power Supplies.
  - If one Power Supply fails, ports configured as "priority ports" will continue to receive power. The low priority PoE ports may not get PoE or lose power.
  - **Enhanced POE is supported** – up to 20 Watts.
  - PoE+ will not be supported at FCS.
- 

### QUESTION 5

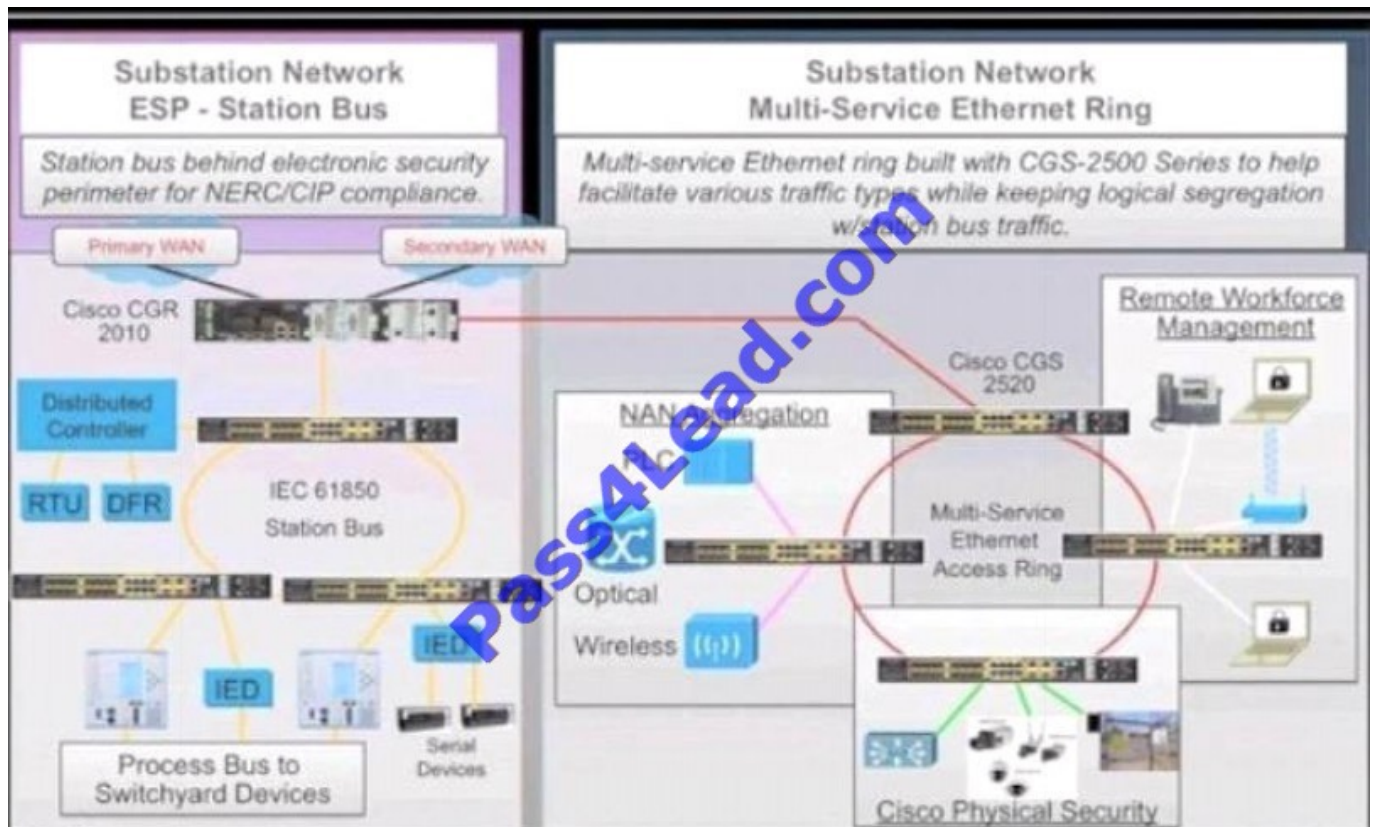
Cisco recommends that you always start to populate the Cisco CGR 2010 from which slot?

- A. Slot 0
- B. Slot 1
- C. Slot 2
- D. Slot 3

Correct Answer: A

---

### QUESTION 6



Which trend is driving the move toward Smart Grid?

- A. increases in supply, which requires the integration of distributed generation sources
- B. increasing carbon footprint
- C. compliance with regulations involving government funding and rules
- D. reduced demand, which causes an increase in demand and peak load

Correct Answer: C

#### QUESTION 7

Which of these is a grouping of elements that are part of the Cisco Substation Automation solution?

- A. data center and customer call centers
- B. customer call centers, electrical auto recharging, home energy management
- C. protection and control, grid monitoring, multi service communications networks
- D. multi service communications networks
- E. protection and control, auto meter reading, data analysis

Correct Answer: C

**QUESTION 8**

How many types of SMARTnet services are available for CGS and CGR products?

- A. 3 types
- B. 6 types
- C. 5 types
- D. 2 types
- E. 4 types

Correct Answer: A

---

**QUESTION 9**

Why is the blank cover needed when there is only one power supply in use?

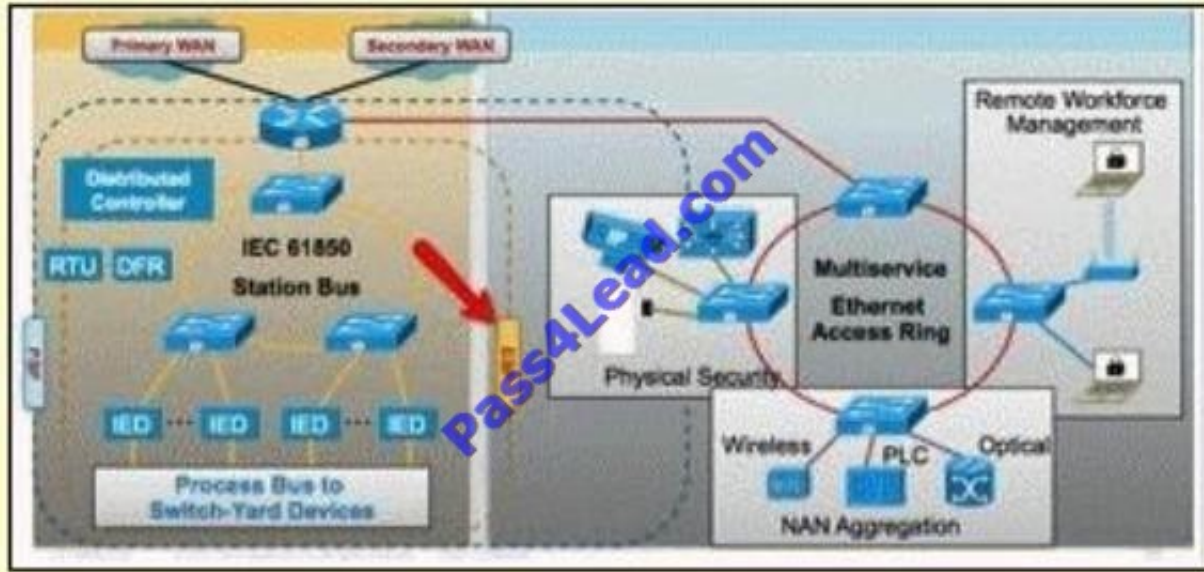
- A. Blank covers are required by the NERC/CIP Standards Committee. The system can only support one power supply.
- B. To maintain the correct ventilation and environmental rating for the system.
- C. To ensure that the equipment has a uniform color appearance.

Correct Answer: A

---

**QUESTION 10**

Refer to the exhibit. What does "ESP" represent?



- A. electronic substation protocol
- B. external substation protection
- C. electronic security perimeter
- D. external security perimeter

Correct Answer: C

**QUESTION 11**

Which of the following models supports Power over Ethernet?

- A. CGS-2520-24TC
- B. CGS-2520-16S-8PC
- C. All CGS models
- D. None of the model supports POE

Correct Answer: B

## Power Over Ethernet Support

- PoE is supported only in CGS-2520-16S-8PC.
- Architecture is similar to Catalyst 3750E family switches.
- One Power Supply can support up to 65W and two Power Supplies support up to 170W of PoE.
- Powering all the 8 FE ports will require 2 Power Supplies.
- If one Power Supply fails, ports configured as "priority ports" will continue to receive power. The low priority PoE ports may not get PoE or lose power.
- Enhanced POE is supported – up to 20 Watts.
- PoE+ will not be supported at FCS.

---

### QUESTION 12

What are the two different types of console ports available? (Choose two.)

- A. Network
- B. USB
- C. RJ45
- D. Firewall

Correct Answer: BC



To Read the [Whole Q&As](#), please purchase the [Complete Version](#) from [Our website](#).

## Try our product !

**100%** Guaranteed Success

**100%** Money Back Guarantee

**365** Days Free Update

**Instant Download** After Purchase

**24x7** Customer Support

Average **99.9%** Success Rate

More than **800,000** Satisfied Customers Worldwide

Multi-Platform capabilities - **Windows, Mac, Android, iPhone, iPod, iPad, Kindle**

## Need Help

Please provide as much detail as possible so we can best assist you.

To update a previously submitted ticket:



 <p><b>One Year Free Update</b> Free update is available within One Year after your purchase. After One Year, you will get 50% discounts for updating. And we are proud to boast a 24/7 efficient Customer Support system via Email.</p>	 <p><b>Money Back Guarantee</b> To ensure that you are spending on quality products, we provide 100% money back guarantee for 30 days from the date of purchase.</p>	 <p><b>Security &amp; Privacy</b> We respect customer privacy. We use McAfee's security service to provide you with utmost security for your personal information &amp; peace of mind.</p>
---	---	--

Any charges made through this site will appear as Global Simulators Limited.

All trademarks are the property of their respective owners.