

100% Money Back
Guarantee

Vendor: Microsoft

Exam Code: 70-158

Exam Name: TS: Forefront Identity Manager 2010,
Configuring

Version: Demo

Question: 1.

You are planning to deploy Forefront Identity Manager (FIM) 2010 in your company network. You want to provide identity management between a Human Resources application and Active Directory Domain Services (AD DS). You need to ensure that the synchronization service instance can be returned if the primary server fails. What should you implement?

- A. A cluster server
- B. A warm-standby server
- C. A software load-balance server
- D. A hardware load-balance appliance

Answer: B

Question: 2.

You are planning to deploy Forefront Identity Manager (FIM) 2010 in your company network to provide an identity management solution between an enterprise resource planning (ERP) application and Active Directory. The solution will contain the following FIM services: FIM Service FIM Service database FIM Synchronization Service FIM Synchronization Service database. You need to ensure that all FIM services support fault tolerance. What should you do? (Choose all that apply.)

- A. Deploy FIM Service in a network load-balanced configuration.
- B. Deploy a FIM Service instance on an active server and a second FIM service instance on a standby server.
- C. Deploy the FIM Synchronization Service database and FIM Service database in a failover cluster configuration.
- D. Deploy the FIM Synchronization Service database and FIM Service database in a network load-balanced configuration.
- E. Deploy a FIM Synchronization Service instance on an active physical server and a second FIM Synchronization Service instance on a standby physical server.

Answer: BCE

Question: 3.

You deploy Forefront Identity Manager (FIM) in your company network to synchronize user accounts between Active Directory and an HR application. End users use the FIM Self-Service Portal to reset passwords and manage groups. You use a two-tiered architecture according to the following table.

Server	Roles
One back-end server	?FIM Synchronization database (dedicated disk) FIM Service database (dedicated disk) FIM Synchronization Service FIM Service (dedicated to FIM Synchronization Service access) FIM Portal
Two load-balanced front-end servers	?FIM Service FIM Self-Service Portal

Currently, the number of users and groups has doubled. You experience delays in performance of the Active Directory Management Agent (AD MA). You need to improve the performance of the MA . What should you do?

- A. Configure the AD MA to run as a different service account.
- B. Add an additional front-end server to the two load-balanced front-end servers.
- C. Split the FIM Synchronization Service, and then install it on a new separate physical server.
- D. Split the FIM Portal from the back end, and then install it on a new separate physical server.

Answer: C

Question: 4.

You are planning to deploy Forefront Identity Manager (FIM) 2010 in your company network. You need to select a FIM topology that meets the following requirements: Removes single points of failure. Separates end-user operations from administrative data synchronization. What should you do? (Choose all that apply.)

- A. Create two service partitions.
- B. Create four service partitions.
- C. Create two instances of the FIM Service by using two FIM Service Names.
- D. Create four instances of the FIM Service by using two FIM Service Names.

Answer: AD

Question: 5.

You are deploying Forefront Identity Manager (FIM) to your company network. End users will use the password self-service, user profile management, and group management from the FIM Portal. You use a separate account to install all FIM software on a server allocated for FIM installation. You need to complete the portal installation of FIM services. What should you do? (Choose all that apply.)

- A. Ensure that delegation is disabled for the FIM service account.
- B. Ensure that delegation is disabled for the SharePointService account.
- C. Ensure that the FIM installation account has SQL sysadmin rights.
- D. Ensure that the FIM Installation account has SharePoint administrator permissions.
- E. Configure the SharePoint Application Pool account to use the Configurable service account.

Answer: CDE

Question: 6.

You administer a Forefront Identity Management (FIM) 2010 server in your company network. You need to be able to synchronize user accounts between Active Directory Domain Services (AD DS) and third-party directory services by using the FIM Portal. What should you do?

- A. Add the FIM Synchronization Service (FIMSynchronizationService) account to the FIMSyncAdmins group.
- B. Add the FIM Service (FIMService) account to the FIMSyncAdmins group.
- C. Change the FIM Service (FIMService) account configuration to logon as local system account.
- D. Change the FIM Synchronization Service (FIMSynchronizationService) account configuration to logon as local system account.

Answer: B

Question: 7.

You deploy Forefront Identity Manager (FIM) 2010 in your company network. You need to activate Kerberos authentication for the FIM Portal. What should you do?

- A. Modify the ResourceManagementClient section of the web.config file.
- B. From the Internet Information Services (IIS) Manager console, change Windows Authentication to Enable Kernel-mode authentication.
- C. From the SharePoint Central Administration website, on the Edit Authentication page, clear Integrated Windows Authentication.
- D. From the SharePoint Central Administration website, on the Edit Authentication page, change Authentication Type to Web Single sign on.

Answer: A

Question: 8.

You are planning to deploy Forefront Identity Manager (FIM) 2010 in your company network. Which server platform should you install before the FIM Portal?

- A. Windows SharePoint Services (WSS) 3.0
- B. Microsoft SharePoint Foundation 2010
- C. Microsoft SharePoint Server 2010
- D. Microsoft Office SharePoint Server 2007

Answer: A

Question: 9.

Your company network contains Microsoft Identity Lifecycle Manager (ILM) 2007 and Microsoft SQL Server 2008. ILM is configured to use 32-bit rules extensions. You upgrade ILM 2007 to Forefront Identity Manager (FIM) 2010. You need to recompile the rules extensions. What should you do? (Choose all that apply.)

- A. Configure the references to point to a custom .dll file.
- B. Configure the references to point to the FIM 2010 libraries.
- C. Copy the extensions to the server that runs FIM 2010.
- D. Copy the extensions to a 64-bit version of SQL Server 2008.

Answer: BC

Question: 10.

Drag and Drop Question

This type of question asks you to complete a diagram in the work area. In a Drag and Drop question, you need to move sources from the source area into targets in the diagram in the work area. Each target is indicated by a gray box.

To set your answer

Drag the appropriate source objects to the correct targets in the work area.

When the source object is within the target, an outline appears around the gray box. The source object will snap into place when you release the mouse button.

Source objects can be moved only to targets that are the same size.

You might not need to use all the source objects provided.

Some source objects can be used only once; some source objects can be used more than once. A source object will appear deactivated when its use limit is reached. To use this source object again, remove an instance of it from the work area.

To remove an object from the work area

Drag the source object back to the source area.

Select the source object and press the Delete key.

The object is reactivated in the source area.

To replace a source object in the work area

Drag a new source object to the target.

The new source object will replace the previous source object.

To remove all source objects from the work area

Click the Reset button.

Notes

Note the following considerations when answering this type of question:

You might need to use the scroll bar to view the entire contents of the question. You might need to use the scroll bar to view the entire contents of the panes in the work area. You can use the splitter bar to resize the panes. Your company network contains Microsoft Identity Integration Services (MIIS) 2003 and Microsoft SQL Server 2005 configured as shown in the following table.

Server name	Role
LON-SRV1	?MIIS 2003 SP1 Windows Server 2003
LON-SQL	?SQL Database Server Windows Server 2003
LON-DC1	?AD Domain Controller Windows Server 2003

You plan to upgrade the network to Forefront Identity Manager (FIM) 2010. You want to separate the FIM Service, FIM Synchronization Service, and FIM Portal roles. You need to identify the appropriate operating system and server roles that must be installed on the existing hardware. What should you do? (To answer, drag the appropriate component or components to the correct location or locations in the answer area.)

Installation Component

SQL Server 2008 (32-bit)

SQL Server 2008 (64-bit)

Windows Server 2008 R2

FIM Service

FIM Synchronization Service

FIM Portal

FIM Password Reset Portal

Server LON-SRV1 LON-SQL LON-DC1

Answer:

I7H6G3F5E2D3C4B2A3

Question: 11.

Your company network includes Microsoft Identity Lifecycle Manager (ILM) 2007 and Microsoft SQL Server 2005. You need to perform a platform upgrade from ILM to Forefront Identity Manager (FIM) 2010. You also need to upgrade SQL Server 2005 to SQL Server 2008. What should you do? (Choose all that apply.)

- A. Rename the ILM database to FIMSynchronizationManagement.
- B. Rename the ILM database to FIMSynchronizationService.
- C. Set the compatibility level on the ILM database to SQL Server 2005 (90).
- D. Copy the existing ILM database in SQL Server 2005 to a server that runs a 32-bit version of SQL Server 2008.
- E. Copy the existing ILM database in SQL Server 2005 to a server that runs a 64-bit version of SQL Server 2008.

Answer: BCE

Question: 12.

Your company network includes Forefront Identity Manager (FIM) 2010 and Active Directory Domain Services (AD DS). AD DS is configured as a single domain. The domain functional level is set to Windows Server 2008. Your company plans to use the FIM Add-in for Microsoft Outlook 2007 feature. You create and edit a Group Policy Object (GPO) for FIM Outlook 2007 settings. The GPO does not contain settings for FIM client configuration. You need to be able to manage FIM client components by using Group Policy. What should you do?

- A. Raise the domain functional level to Windows Server 2008 R2.
- B. Create the Central Store for Group Policy Administrative Templates on the PDC Emulator.
- C. Add the ForefrontIdentityManager.admx file and the regional .adml file to the PolicyDefinitions folder.
- D. Update the client registry entries located in
HKEY_CURRENT_USER\Software\Policies\Microsoft\Forefront Identity Manager\2010\Add-ins.

Answer: C

Question: 13.

You administer a Forefront Identity Management (FIM) 2010 server in your company network. All client computers run Windows 7. Your company plans to automate the deployment of FIM client components. You need to perform an unattended installation of the FIM Password and Authentication extension. What should you do?

- A. From a command prompt, run `msiexec.exe /i "\\DistributionServer\FIM\Add-ins and extensions.msi" /quiet ADDLOCAL=OfficeClientPORTAL_LOCATION=FIMServer01 PORTAL_PREFIX=https MONITORED_EMAIL=fimservice@contoso.com`.
- B. From a command prompt, run `msiexec.exe /i "\\DistributionServer\FIM\Add-ins and extensions.msi" /quiet ADDLOCAL>PasswordClientRMS_LOCATION=FIMServer01 SITELOCK_DOMAIN=contoso.com;adatum.com`.
- C. From the Windows PowerShell console, run `Get-WMIObject -ComputerName LONCL1 -List | Where-Object -FilterScript {$_.Name -eq "Win32_Product"}.Install("\\DistributionServer\FIM\Add-ins and extensions.msi")`.
- D. From the Windows PowerShell console, run `Get-Object -ComputerName LONCL1 -List | Where-Object -FilterScript {$_.Name -eq "Win32_Product"}.Install("\\DistributionServer\FIM\Add-ins and extensions.msi")`.

Answer: B

Question: 14.

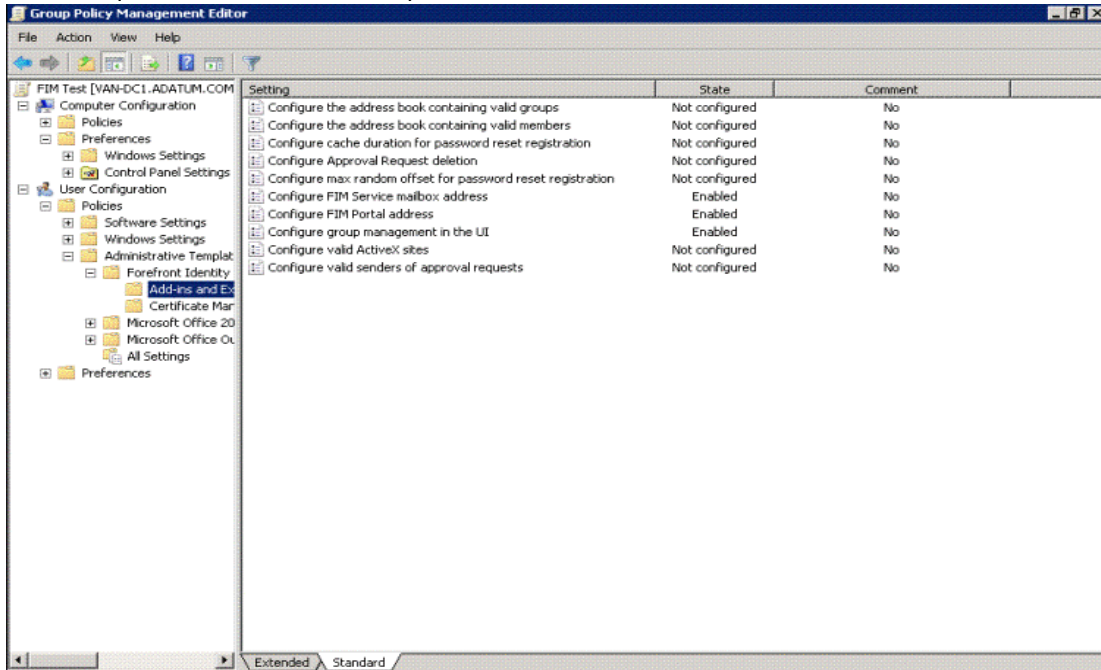
You administer a Forefront Identity Management (FIM) 2010 server in your company network. You install the FIM Service and Portal Language Pack. A new office is opened in Japan. Employees in the Japan office report that regional settings in only English, Chinese (Simplified), and Chinese (Traditional) are available in the FIM Portal. You need to ensure that regional settings in only English and Japanese are available for the Japan office in the FIM Portal. What should you do?

- A. Load a backup of the FIM Service database made prior to the installation of the FIM Service and Portal Language Pack. Rerun the setup for the FIM Service and Portal Language Pack.
- B. Load a backup of the FIM Synchronization Service database made prior to the installation of the FIM Service and Portal Language Pack. Rerun the setup for the FIM Service and Portal Language Pack.
- C. From the FIM Splash Screen, download and run Setup.exe for the FIM Service and Portal Language Pack.
- D. On the Custom Setup page, select the appropriate languages that must be installed.

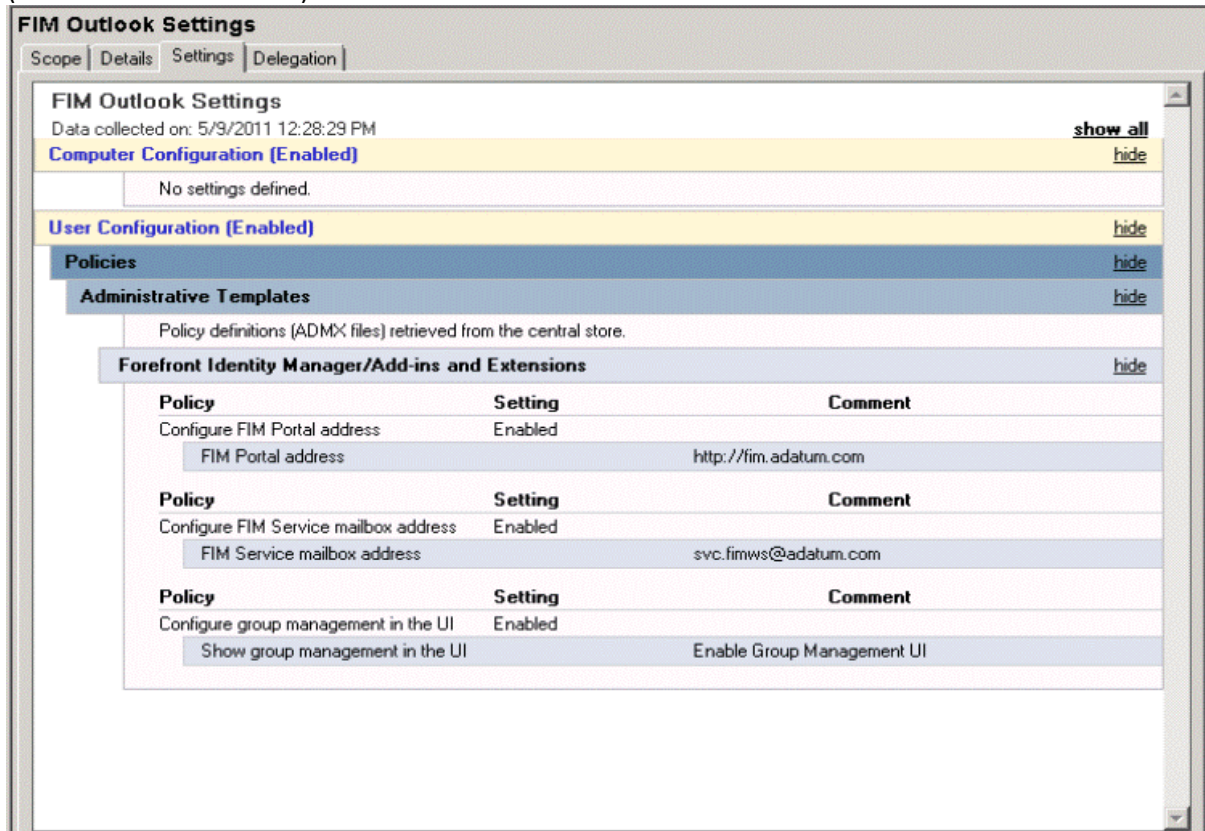
Answer: A

Question: 15.

Your company network includes Forefront Identity Manager (FIM) 2010. You manage the FIM 2010 Add-ins and Extensions through a Group Policy Object (GPO) configured according to the two exhibits. (Click the Exhibit button.)



(Click the Exhibit button.)



You need to configure the GPO policy settings to meet the following requirements: Users must be able to register for Password Reset and Registration. The Approve and Reject buttons must appear in the Microsoft Outlook client and approvals must be performed by using the button. What should you do? (Choose all that apply.)

- A. Add fim.adatum.com to the Configure valid ActiveX sites policy setting.
- B. Add the group address book to the Configure the address book containing valid groups policy setting.
- C. Add the member address book to the Configure the address book containing valid members policy setting.
- D. Add the address or addresses of FIM administrators to the Configure valid senders of approval requests policy setting.
- E. Add the address or addresses of mailboxes that host the FIM web service to the Configure valid senders of approval requests policy setting.

Answer: AE

Question: 16.

Your company network includes Forefront Identity Manager (FIM) 2010. You configure the FIM Portal to use detailed error pages. A backup of FIM is performed daily. After a restore of the FIM Service, you discover that the detailed error pages are not displayed for the FIM Portal. You need to ensure that when you perform a restore of the FIM Service, the detailed error pages are displayed. What should you do?

- A. Include the web.config file in the daily backup of FIM.
- B. From an elevated command prompt, run iisreset.exe.
- C. From the FIM Portal, edit the Portal Configuration Extended Attributes page.
- D. Edit the web.config file and include `<customErrors mode="On"/>` in the file.

Answer: A

Question: 17.

Build List and Reorder Question

This type of question asks you to indicate the correct answer by building an answer list. In a Build List and Reorder question you need to build a list by dragging the appropriate source objects to the answer list, and then place them in the correct order based on criteria defined in the question. To set your answer Drag the source object from the source area to the answer list. The source object is removed from the source area and is added to the answer list relative to the cursor location.

Click the source object to select it, and then click the button.

The source object is removed from the source area and is added to the bottom of the answer list.

The button is unavailable after all source objects are moved to the answer list.

To reorder objects in the answer list

Drag the object to the correct location in the answer list.

Click an object to select it, and then click the and buttons to move the object.

The and buttons might be unavailable based on the location of the currently selected object.

To remove an object from the answer list

Drag the object from the answer list to the source area

a.

The object is returned to the source area.

Select the object, and then press the Delete key.

The object is returned to the source area.

Click the object to select it, and then click the button.

The object is returned to the source area. The button is unavailable until the first source object is added to the answer list.

To remove all objects from the answer list

Click the Reset button.

Notes

Note the following considerations when answering this type of question:

You

might need to use the scroll bar to view the entire contents of the question.

You might need to use the scroll bar to view the entire contents of the panes in the work area.

You can use the splitter bars to resize the panes. Your company network includes Forefront Identity Manager (FIM) 2010 and Microsoft SQL Server 2008. A backup of the FIM Synchronization Service is performed daily.

The FIM Synchronization Service fails. You restore the FIM 2010 database to the SQL server.

You need to restore the FIM Synchronization Service.

What should you do? (To answer, move the appropriate actions from the list of actions to the answer area and arrange them in the correct order.)

A. Stop the FIM Service.

B. Stop the FIM Synchronization Service.

C. Start the FIM Synchronization Service.

D. Provide the encryption keys that were exported during the backup process.

E. Install the FIM 2010 Synchronization Service on a new computer in the same Active Directory domain.

**Answer: E BEFORE
D)(D BEFORE C**

Question: 18.

You administer a Forefront Identity Management (FIM) 2010 server in your company network. The server that runs the FIM Portal fails. You begin the restore process. However, you receive an error when you stop the SQL Server Agent service. You need to be able to continue the restore process. What should you do?

- A. Run iisreset.exe.
- B. Close the FIM Portal.
- C. Stop the FIM Synchronization service.
- D. Ensure that no stored procedure runs in FIM.

Answer: D

Question: 19.

You administer a Forefront Identity Management (FIM) 2010 server in your company network. You need to configure a regular backup of the FIM Synchronization Service while minimizing interruption to the service if possible. What should you do?

- A. Include the FIM Service database along with the backup.
- B. Stop the FIM Synchronization Service before performing the backup.
- C. Ensure that all management agents are running during the backup process.
- D. Export the FIM Synchronization Service encryption key during the backup process.

Answer: D

Question: 20.

You administer a Forefront Identity Management (FIM) 2010 server in your company network. You want to provision new users to Active Directory Domain Services (AD DS). You need to calculate a random password for newly created user accounts. You also need to be able to send the password in an automatic e-mail notification. What should you do?

- A. Calculate the password by using a workflow. Link an outbound synchronization rule parameter to a workflow parameter.
- B. Calculate the password in an outbound synchronization rule. Create a workflow to send a notification e-mail.
- C. Calculate the password by using a workflow. Configure another workflow to send a notification e-mail.
- D. Calculate the password in an outbound synchronization rule. Link an outbound synchronization rule parameter to a workflow parameter.

Answer: A

Question: 21.

You administer a Forefront Identity Manager (FIM) 2010 server in your company network. You create a new Active Directory Domain Services (AD DS) Management Agent. You also create the AD DS user synchronization configuration triple. You need to synchronize FIM user accounts with AD DS. What should you do?

- A. Select the Password Synchronization option.
- B. Select the Enable Synchronization Rule Provisioning option.
- C. Enable user management Management Policy Rules.
- D. Select the Enable metaverse rules extension and Enable Provisioning Rules Extension options.

Answer: B

Question: 22.

You administer a Forefront Identity Manager (FIM) 2010 server. The FIM server has management agents (MAs) connected to the following data sources: Active Directory Domain Services (AD DS) Active Directory Lightweight Directory Services (AD LDS) Microsoft SQL Server. You need to delete a user object from AD LDS when the matching user record in the SQL Server database is marked as inactive. The attribute flow between the user record in the SQL Server and the matching AD DS user object must remain unchanged. What should you do? (Each correct answer presents part of the solution. Choose all that apply.)

- A. Configure connector filter for the AD DS MA.
- B. Configure connector filter for the SQL Server MA.
- C. Configure deprovisioning for the AD LDS MA.
- D. Configure deprovisioning in the AD LDS triple.
- E. Configure deprovisioning for the SQL Server MA.
- F. Configure object deletion rule for the Person object type.

Answer: CD

Question: 23.

You administer a Forefront Identity Manager (FIM) 2010 server in your company network. The FIM server synchronizes user resources between an Active Directory Domain Services (AD DS) domain and a Human Resources (HR) application. HR data has been projected to the metaverse and accounts are provisioned to the domain immediately after user records are created in the HR application. The displayName attribute of the domain user matches the Name attribute of the HR application's user record. You need to find out whether a user account has been successfully created in the domain after you add a new record in the HR application. What should you do? (Each correct answer presents part of the solution. Choose all that apply.)

- A. Create an inbound synchronization rule.
- B. Create an outbound synchronization rule.
- C. On the Active Directory outbound sync rule, add the outbound attribute flow rule Source: Name; Destination: displayName. Check the box "use as existence test."
- D. On the Active Directory outbound sync rule, add the outbound attribute flow rule Source: Name; Destination: displayName. Check the box "initial flow only."
- E. Select the Use as Existence Test check box for the displayName attribute.

Answer: BCE

Question: 24.

You administer a Forefront Identity Management (FIM) 2010 server in your company network. You need to use the FIM Portal to create a group that meets the following requirements: The group is e-mail-enabled. Manager approval is required to join. What should you do?

- A. Create a distribution group that is the Manual group membership type.
- B. Create a security group that is the Manager-based group membership type.
- C. Create a security group that is the Criteria-based group membership type.
- D. Create a distribution group that is the Manager-based group membership type.

Answer: A

Question: 25.

You administer a Forefront Identity Manager (FIM) 2010 server in your company network. You need to create a new group that automatically includes users who report to either of two managers. Which type of group should you create?

- A. Manager-based security group
- B. Manager-based distribution group
- C. Manually managed security group
- D. Criteria-based distribution group

Answer: D

Question: 26.

You deploy Forefront Identity Manager (FIM) 2010 server in your company network. You configure group objects synchronization between the Active Directory domain and FIM Portal. You create an outbound synchronization rule for the domain data source. You need to configure the outbound attribute flow for the group object. You also need to ensure that the attribute flow supports all possible Active Directory group types and scopes. What should you do? (Choose all that apply.)

- A. Configure a custom expression for the groupType destination attribute.
- B. Configure a custom expression for the dn destination attribute.
- C. Configure mapping of the type source attribute to the groupType destination attribute.
- D. Configure mapping of the scope source attribute to the groupType destination attribute.
- E. Configure mapping of the dn source attribute to the dn destination attribute.
- F. Configure mapping of the member source attribute to the member destination attribute.

Answer: ABF

Question: 27.

You install a Forefront Identity Management (FIM) 2010 server in your company network. The network includes Active Directory Domain Services (AD DS) and a Human Resources (HR) application. User account attributes are located in AD DS and in the HR application. You configure FIM to import a Department attribute from both the HR application data source and AD DS. You need to ensure that the value for the Department attribute from HR is always used where a value exists. What should you do?

- A. From Synchronization Service Manager, use Metaverse Designer to configure the Department attribute flow precedence for the Person object.
- B. From Synchronization Service Manager, use Management Agents to modify join rules precedence in the HR application MA and in the AD DS MA.
- C. From the FIM Portal, create a new outbound synchronization rule for the HR application data source.
- D. From the FIM Portal, create a new outbound synchronization rule for the AD DS data source.

Answer: A

Question: 28.

You install a Forefront Identity Management (FIM) 2010 server in your company network. The network has a Human Resources (HR) application that contains the following two employee attributes:

First Name Last Name

You create a Management Agent (MA) by using the HR application as a data source. You need to calculate the emailAddress attribute of the metaverse Person object. You also need to ensure that the attribute concatenates the values of the First Name and the Last Name attributes. What should you do?

- A. Create a synchronization rule. Add an Inbound attribute flow.
- B. Create a synchronization rule. Add an Outbound attribute flow.
- C. Edit the Management Agent properties. Configure an Import attribute flow based on the Direct mapping type.
- D. Edit the Management Agent properties. Configure an Export attribute flow based on the Advanced mapping type.

Answer: A

Question: 29.

You deploy a Forefront Identity Manager (FIM) 2010 server in your company network. You create bidirectional synchronization rules for an Active Directory Domain Services (AD DS) data source and a Microsoft SQL Server data source. Both synchronization rules have the same input and output attribute flows and an equal precedence. You need to prevent the department attribute defined in the AD DS to flow into the SQL Server data source. You also need to ensure that all other attributes retain an equal precedence flow. What should you do? (Each correct answer presents part of the solution. Choose all that apply.)

To Read the [Whole Q&As](#), please purchase the [Complete Version](#) from [Our website](#).

Trying our product !



- ★ **100%** Guaranteed Success
- ★ **100%** Money Back Guarantee
- ★ **365 Days** Free Update
- ★ **Instant Download** After Purchase
- ★ **24x7** Customer Support
- ★ Average **99.9%** Success Rate
- ★ More than **69,000** Satisfied Customers Worldwide
- ★ Multi-Platform capabilities - **Windows, Mac, Android, iPhone, iPod, iPad, Kindle**

Need Help

Please provide as much detail as possible so we can best assist you.

To update a previously submitted ticket:



 One Year Free Update <p>Free update is available within One Year after your purchase. After One Year, you will get 50% discounts for updating. And we are proud to boast a 24/7 efficient Customer Support system via Email.</p>	 Money Back Guarantee <p>To ensure that you are spending on quality products, we provide 100% money back guarantee for 30 days from the date of purchase.</p>	 Security & Privacy <p>We respect customer privacy. We use McAfee's security service to provide you with utmost security for your personal information & peace of mind.</p>
---	---	--

[Guarantee & Policy](#) | [Privacy & Policy](#) | [Terms & Conditions](#)

Any charges made through this site will appear as Global Simulators Limited.

All trademarks are the property of their respective owners.

Copyright © 2004-2015, All Rights Reserved.