

**100%** Money Back  
**Guarantee**

**Vendor:**home

**Exam Code:**70-243

**Exam Name:**Administering and Deploying System  
Center 2012 Configuration Manager

**Version:**Demo

## QUESTION 1

### HOTSPOT

You have a System Center 2012 R2 Configuration Manager Service Pack 1 (SP1) deployment.

From the Configuration Manager Console, you view the Deployment node from the Monitoring workspace as shown in the following table:

Software	Collection	Purpose	Action
App1	All Desktop and Server	Required	Install
App2	All Desktop and Server clients	Simulate	Install
App3	All Users	Available	Install
App4	All Desktop and Server clients	Required	Remediate

App2 has several requirements added to the deployment type. The Monitoring workspace displays the following completion statistics for App2.

- Success: 3
- In Progress: 0
- Error: 0
- Requirements Not Met: 5
- Unknown: 0

You need to identify the deployment status of App2.

What should you identify? To answer, select the appropriate options in the answer area.

Hot Area:

**Answer Area**

Number of client computers that have installed App2 as a result of this deployment:

	▼
0	
1	
2	
3	
4	
5	
6	
7	
8	

Number of client computers that meet the requirements for the application:

	▼
0	
1	
2	
3	
4	
5	
6	
7	
8	

Correct Answer:

**Answer Area**

Number of client computers that have installed App2 as a result of this deployment:

	▼
0	
1	
2	
3	
4	
5	
6	
7	
8	

Number of client computers that meet the requirements for the application:

	▼
0	
1	
2	
3	
4	
5	
6	
7	
8	

Use simulated deployments if you want to test the applicability of an application deployment to computers without installing or uninstalling the application. A simulated deployment evaluates the detection method, requirements and dependencies for a deployment type, and reports the results in the Deployments node of the Monitoring workspace. References: <https://technet.microsoft.com/en-us/library/hh508773.aspx>

---

**QUESTION 2**

DRAG DROP

Your network contains a System Center 2012 R2 Configuration Manager Service Pack 1 (SPI) environment.

Your company has a finance department that contains 100 client computers. Only some of the client computers have the Microsoft Application Virtualization (App-V) client installed.

You have a new application named App1.

You need to deploy App1 to all of the users in the finance department.

Which three actions should you perform in sequence? To answer, move the appropriate actions from the list of actions to the answer area and arrange them in the correct order.

Select and Place:

Actions		Answer Area
Distribute the content to distribution points.		
Configure the App-V client as a requirement of App1.		
Create App1 as a new application.	➤	⬆
Create App1 as a new package in the software library.	⬅	⬇
Create a new deployment for App1 and set the deployment to <b>Required</b> .		
Create the App-V client as a new application in the software library.		

Correct Answer:

Actions		Answer Area
		Configure the App-V client as a requirement of App1.
		Create a new deployment for App1 and set the deployment to <b>Required</b> .
Create App1 as a new application.	➤	Distribute the content to distribution points.
Create App1 as a new package in the software library.	⬅	⬆
		⬇
Create the App-V client as a new application in the software library.		

**QUESTION 3**

**HOTSPOT**

You have a System Center 2012 R2 Configuration Manager Service Pack 1 (SP1) deployment.

You use Configuration Manager to deploy Windows 8.1 to client computers.

You need to encrypt the contents of the operating system volume during the operating system deployment and to store recovery keys in Active Directory. The solution must minimize the amount of time required to deploy the operating system.

Which task sequence steps should you use to perform each task? To answer, select the appropriate options in the answer area.

Hot Area:

**Answer Area**

Encrypt the drive:

	▼
Enable BitLocker	
Pre-provision BitLocker	

Store the recovery key:

	▼
Enable BitLocker	
Capture the Windows settings	
Pre-provision BitLocker	

Correct Answer:

**Answer Area**

Encrypt the drive:

	▼
Enable BitLocker	
Pre-provision BitLocker	

Store the recovery key:

	▼
Enable BitLocker	
Capture the Windows settings	
Pre-provision BitLocker	

\*

Pre-provision BitLocker

This step enables BitLocker on a drive while in Windows PE. Only the used drive space is encrypted. Because you partitioned and formatted the hard drive in the previous step, there is no data, and encryption completes very quickly.

\*

#### Enable BitLocker

This step enables BitLocker encryption on the hard drive and sets key protectors. Because the hard drive was pre-provisioned with BitLocker, this step completes very quickly.

Windows 7/8/10 requires that you add a key protector.

Note: The Pre-provision BitLocker task sequence step in Microsoft System Center 2012 Configuration Manager allows you to enable BitLocker from the Windows Preinstallation Environment (Windows PE) prior to operating system

deployment. Only the used drive space is encrypted, and therefore, encryption times are much faster.

References: <https://technet.microsoft.com/en-us/library/dn456883.aspx>

---

## QUESTION 4

### HOTSPOT

Your network contains a single Active Directory domain named contoso.com. The domain contains a member server named Server1.

System Center 2012 R2 Configuration Manager Service Pack 1 (SP1) is deployed to Server1. All of the site system roles are installed on Server1.

Server1 will be used for application deployment. The application source files are stored in the subfolders of a folder named E:\Software. E:\Software is shared as Software.

E:\Software\App1 contains the following files:

- App1.sft
- App1.apk
- App1.exe
- App1.msi
- App1.osd
- App1.sprj
- App1.xml
- Setup.exe
- App1.appv
- App1.appx

You plan to create an application named App1 by using the Create Application Wizard.

App1 will have the following deployment types:

You need to identify which path to use for each deployment type of App1.

What should you identify? To answer, select the appropriate options in the answer area.

Hot Area:

## Answer Area

App-V 5:

C:\Software\App1\App1.exe	
C:\Software\App1\App1.xml	
C:\Software\App1\App1.appv	
\\Server1.contoso.com\Software\App1.exe	
\\Server1.contoso.com\Software\App1.xml	
\\Server1.contoso.com\Software\App1.appv	

Windows App Package:

C:\Software\App1\App1.apk	
C:\Software\App1\App1.xml	
C:\Software\App1\App1.appx	
\\Server1.contoso.com\Software\App1.apk	
\\Server1.contoso.com\Software\App1.xml	
\\Server1.contoso.com\Software\App1.appx	

Correct Answer:

## Answer Area

App-V 5:

C:\Software\App1\App1.exe	
C:\Software\App1\App1.xml	
C:\Software\App1\App1.appv	
\\Server1.contoso.com\Software\App1.exe	
\\Server1.contoso.com\Software\App1.xml	
\\Server1.contoso.com\Software\App1.appv	

Windows App Package:

C:\Software\App1\App1.apk	
C:\Software\App1\App1.xml	
C:\Software\App1\App1.appx	
\\Server1.contoso.com\Software\App1.apk	
\\Server1.contoso.com\Software\App1.xml	
\\Server1.contoso.com\Software\App1.appx	

---

**QUESTION 5****HOTSPOT**

You have a System Center 2012 R2 Configuration Manager Service Pack 1 (SP1) deployment.

You enable the Backup Site Server maintenance task and you configure the task to back up to a local drive.

You need to copy the backup to a network share automatically as soon as the backup completes.

What should you do? To answer, select the appropriate options in the answer area.

Hot Area:

**Answer Area**

Name of the script that copies the backup:

<input type="text"/>	▼
AferBackup.bat	
AferBackup.cmd	
AferBackup.ps1	
AferBackup.vbs	

Location in which to store the script:

<input type="text"/>	▼
%systemroot%\WinSxS\Backup	
%systemroot%\WinSxS\Backup	
%ProgramFiles%\Microsoft Configuration Manager\inboxes\smsbkup.box	
%ProgramFiles%\Microsoft Configuration Manager\inboxes\schedule.box	

Correct Answer:

**Answer Area**

Name of the script that copies the backup:

<input type="text"/>	▼
AferBackup.bat	
AferBackup.cmd	
AferBackup.ps1	
AferBackup.vbs	

Location in which to store the script:

<input type="text"/>	▼
%systemroot%\WinSxS\Backup	
%systemroot%\WinSxS\Backup	
%ProgramFiles%\Microsoft Configuration Manager\inboxes\smsbkup.box	
%ProgramFiles%\Microsoft Configuration Manager\inboxes\schedule.box	

The AfterBackup.bat file is used to perform post-backup actions automatically after the Backup Site Server maintenance task runs successfully. To create the AfterBackup.bat batch file

---

**QUESTION 6****HOTSPOT**

You plan to deploy a System Center 2012 R2 Configuration Manager Service Pack 1 (SP1) stand-alone primary site.

The site will use a Microsoft SQL Server 2014 database server.



You need to recommend a high-availability solution to ensure that the site is available if SQL Server or management point fails.

What should you recommend? To answer, select the appropriate options in the answer area.

Hot Area:

### Answer Area

SQL Server 2014:

	▼
A single instance on a failover cluster	
Two instances that are replicated by using Always On	
Two instances that are replicated by using database mirroring	
Multiple instances that are replicated by using SQL Server replication	

Management point:

	▼
Two management points	
One management point that uses a database replica	
A single instance of the Management Point role on a failover cluster	
Two Configuration Manager sites that each have one management point	

Correct Answer:

### Answer Area

SQL Server 2014:

	▼
A single instance on a failover cluster	
Two instances that are replicated by using Always On	
Two instances that are replicated by using database mirroring	
Multiple instances that are replicated by using SQL Server replication	

Management point:

	▼
Two management points	
One management point that uses a database replica	
A single instance of the Management Point role on a failover cluster	
Two Configuration Manager sites that each have one management point	

## Answer Area

SQL Server 2014:

- A single instance on a failover cluster
- Two instances that are replicated by using Always On
- Two instances that are replicated by using database mirroring
- Multiple instances that are replicated by using SQL Server replication

Management point:

- Two management points
- One management point that uses a database replica
- A single instance of the Management Point role on a failover cluster
- Two Configuration Manager sites that each have one management point

Box 1: As part of the SQL Server Always On offering, Always On Failover Cluster Instances leverages Windows Server Failover Clustering (WSFC) functionality to provide local high availability through redundancy at the server-instance level

—a failover cluster instance (FCI).

When there is hardware or software failure of a server, the applications or clients connecting to the server will experience downtime. When a SQL Server instance is configured to be an FCI (instead of a standalone instance), the high

availability of that SQL Server instance is protected by the presence of redundant nodes in the FCI.

Box 2: When you install multiple instances of critical site system roles such as the management point and distribution point, you provide redundant points of contact for clients in the event that a specific site system server is off-line.

References:

<https://msdn.microsoft.com/en-us/library/ms189134.aspx>

<https://technet.microsoft.com/en-us/library/hh846246.aspx>

---

## QUESTION 7

DRAG DROP

Your network contains a System Center 2012 Configuration Manager environment.

You create a collection named All Marketing Users.

You need to inventory the desktop settings of the All Marketing Users collection.

What should you do?

To answer, move the four appropriate actions from the list of actions to the answer area and arrange them in the correct order.

Select and Place:

The screenshot shows a drag-and-drop interface. On the left, there is a list of seven actions in rectangular boxes:

- Create a custom client user setting named Env.
- Create a custom client device setting named Env.
- Deploy the Env custom setting to the All Marketing Users collection.
- In the Env custom setting, select **User Device Affinity**.
- In the Envcustom setting, select **Hardware Inventory**.
- In the Envcustom setting, select **Desktop (Win32\_Desktop)**.
- In the Envcustom setting, select **Environment (Win32\_Environment)**.

Between the list and the answer area are two arrows: a right-pointing arrow above a left-pointing arrow. The answer area on the right is currently empty.

Correct Answer:

The screenshot shows the same drag-and-drop interface, but now four actions have been moved from the list to the answer area on the right. The actions in the answer area are:

- Create a custom client device setting named Env.
- In the Envcustom setting, select **Hardware Inventory**.
- In the Envcustom setting, select **Desktop (Win32\_Desktop)**.
- Deploy the Env custom setting to the All Marketing Users collection.

The remaining three actions in the list on the left are:

- Create a custom client user setting named Env.
- In the Env custom setting, select **User Device Affinity**.
- In the Envcustom setting, select **Environment (Win32\_Environment)**.

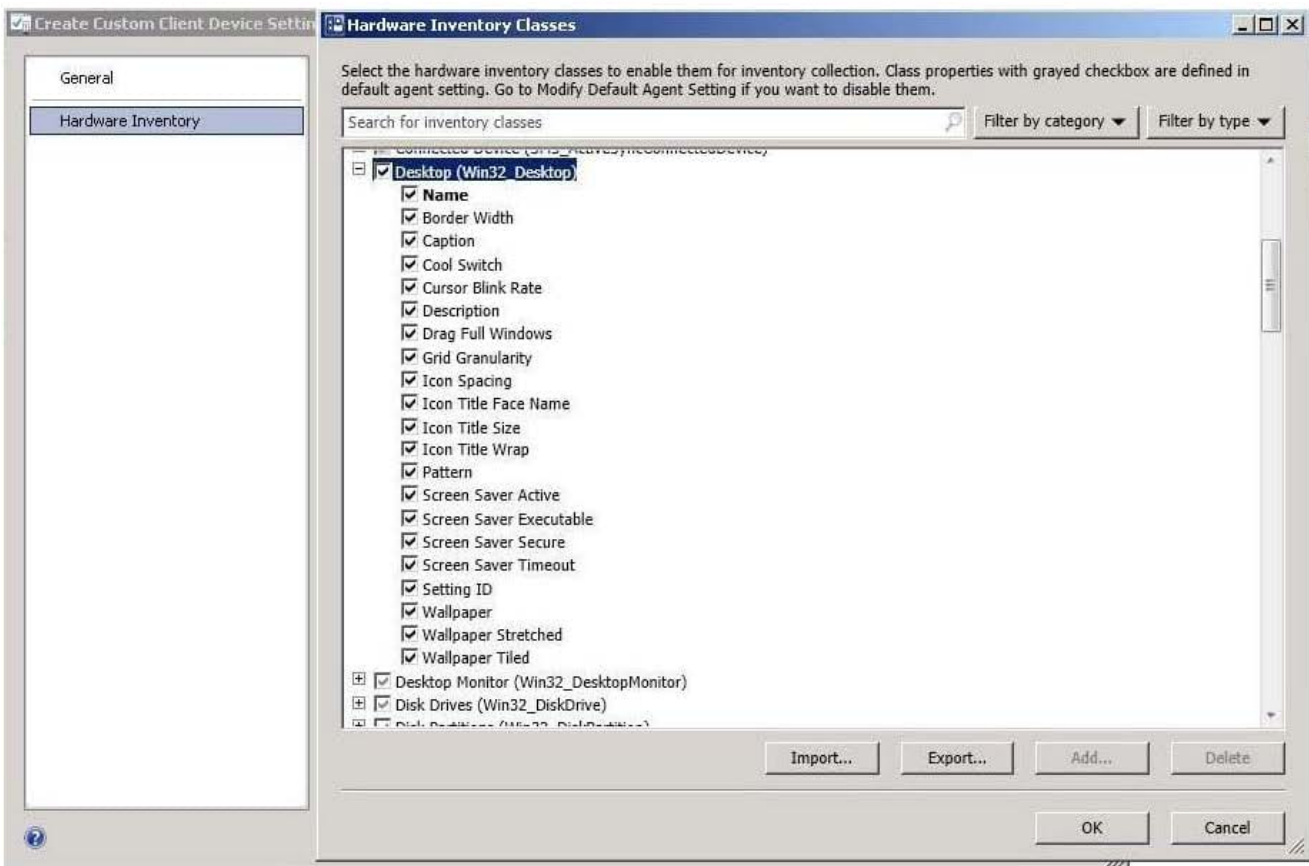
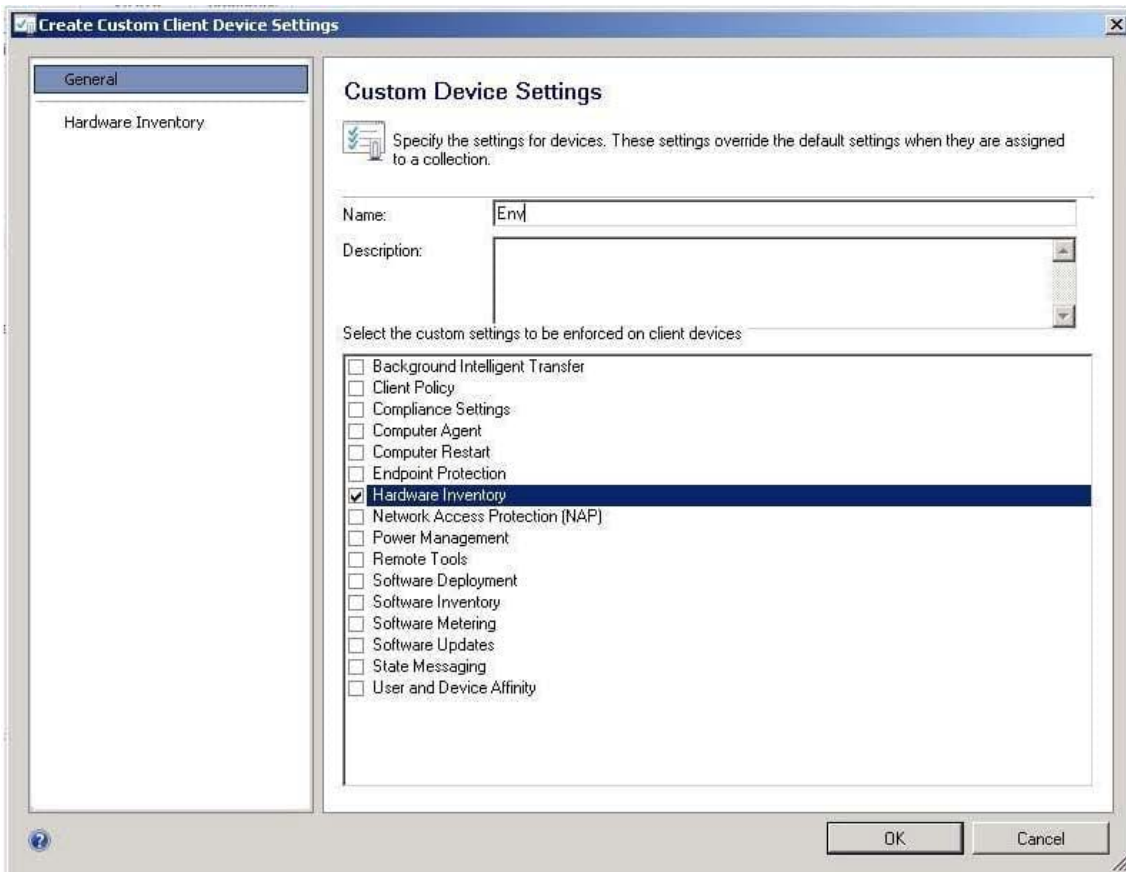
\* Win32\_Environmentclass (Windows)

The Win32\_Environment WMI class represents an environment or system environmentsetting on a Windows computer system. Querying this class returns environment variables found in:

HKEY\_LOCAL\_MACHINE\System\CurrentControlSet\Control\Sessionmanager\Environment

And HKEY\_USERS\Environment

Since we need to inventory WMI information, that means we need Hardware Inventory and you can only do that with a Custom Client Device Setting:



QUESTION 10  
DRAG DROP

---

## QUESTION 8

### HOTSPOT

You have an Active Directory domain named contoso.com. The domain contains three servers named Server1, Server2, and Server3 that run Windows Server 2012 R2. Server1 is a System Center 2012 R2 Configuration Manager Service

Pack 1 (SP1) primary site server.

You plan to install a primary site on Server2.

You need to ensure that Configuration Manager is managed centrally. The solution must minimize administrative effort.

What should you do before you deploy the primary site to Server2? To answer, select the appropriate options in the answer area.

Hot Area:

## Answer Area

Component to install on Server3:

	▼
The Central Administration site	
The primary site	
The secondary site	

Component to remove from Server1:

	▼
Configuration Manager 2012 R2 Service Pack 1 (SP1)	
A distribution point	
An Endpoint Protection point	
A management point	

Correct Answer:

## Answer Area

Component to install on Server3:

▼
The Central Administration site
The primary site
The secondary site

Component to remove from Server1:

▼
Configuration Manager 2012 R2 Service Pack 1 (SP1)
A distribution point
An Endpoint Protection point
A management point

### QUESTION 9

#### HOTSPOT

You have a System Center 2012 R2 Configuration Manager Service Pack 1 (SP1) standalone primary site.

You have a Configuration Manager application named App1 and a Configuration Manager package named Package1.

You need to ensure that App1 and Package1 are deployed only to Windows 8 computers.

In the table below, identify what to configure for App1 and Package1.

NOTE: Make only one selection in each column.

Hot Area:

#### Answer Area

Configuration	App1	Package1
Deployment type requirements	<input type="radio"/>	<input type="radio"/>
Distribution settings	<input type="radio"/>	<input type="radio"/>
Program advanced settings	<input type="radio"/>	<input type="radio"/>
Program requirements	<input type="radio"/>	<input type="radio"/>

Correct Answer:

**Answer Area**

<b>Configuration</b>	<b>App1</b>	<b>Package1</b>
Deployment type requirements	<input type="radio"/>	<input type="radio"/>
Distribution settings	<input type="radio"/>	<input type="radio"/>
Program advanced settings	<input type="radio"/>	<input type="radio"/>
Program requirements	<input checked="" type="radio"/>	<input checked="" type="radio"/>

---

**QUESTION 10**

DRAG DROP

Your network contains a System Center 2012 R2 Configuration Manager Service Pack 1 (SP1) environment. Three users named User1, User2, and User3 will perform the following tasks:

- User1 will review software metering data and inventory reports.
- User2 will deploy applications and create alerts.
- User3 will create configuration items.

You need to identify which security role must be assigned to which user.

What should you identify?

To answer, drag the appropriate security role to the correct user in the answer area. Each security role may be used once, more than once, or not at all. Additionally, you may need to drag the split bar between panes or scroll to view content.

Select and Place:

**Security Role**

- Application Deployment Manager
- Asset Manager
- Compliance Settings Manager

**Answer Area**

- User1 Security role
- User2 Security role
- User3 Security role

Correct Answer:

## Security Role


## Answer Area

**User1** Asset Manager

**User2** Application Deployment Manager

**User3** Compliance Settings Manager

\*

Box 1: Asset Manager

Grants permissions to manage the Asset Intelligence Synchronization Point, Asset Intelligence reporting classes, software inventory, hardware inventory, and metering rules.

\*

Box 2: Application Deployment Manager

Grants permissions to deploy applications. Administrative users who are associated with this role can view a list of applications, and they can manage deployments for applications, alerts, templates and packages, and programs.

Administrative users who are associated

with this role can also view collections and their members, status messages, queries, and conditional delivery rules.

\*

Box 3: Compliance Settings Manager

Grants permissions to define and monitor Compliance Settings. Administrative users associated with this role can create, modify, and delete configuration items and baselines.

They can also deploy configuration baselines to collections, and initiate compliance evaluation, and initiate remediation for non-compliant computers.

References: <https://blogs.technet.microsoft.com/hhoy/2012/03/06/role-basedadministration-in-system-center-2012-configuration-manager/>

---

## QUESTION 11

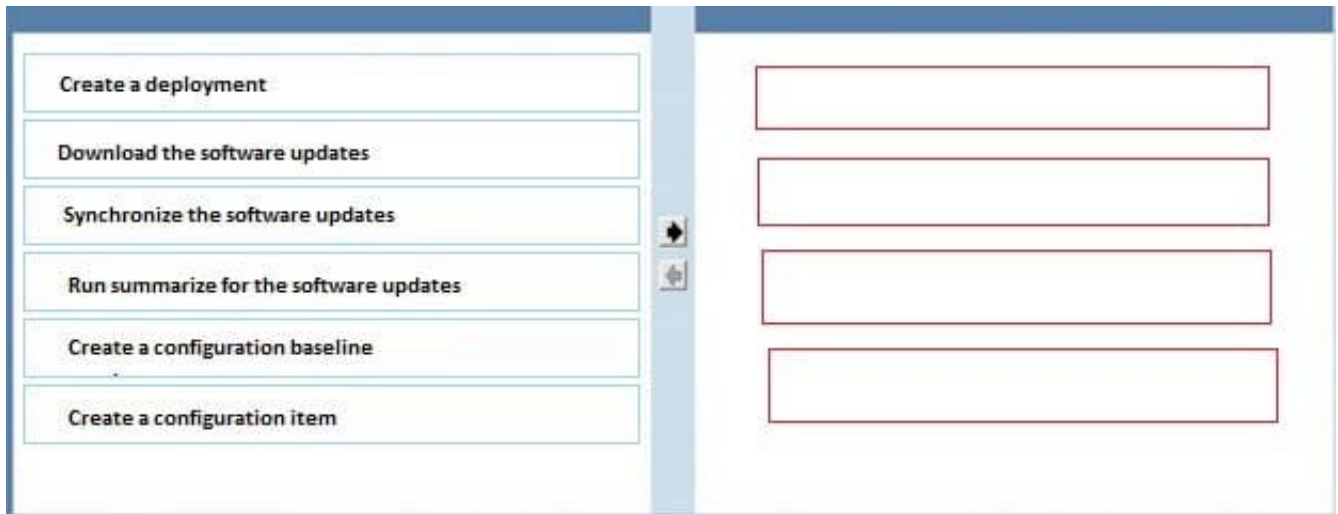
DRAG DROP

You manage a system Centre 2012 R2 Configuration Manager Service Pack1 (SP1) standalone primary site that contains a software update point. You need to implement a configuration baseline that will contain a software updates configuration item.

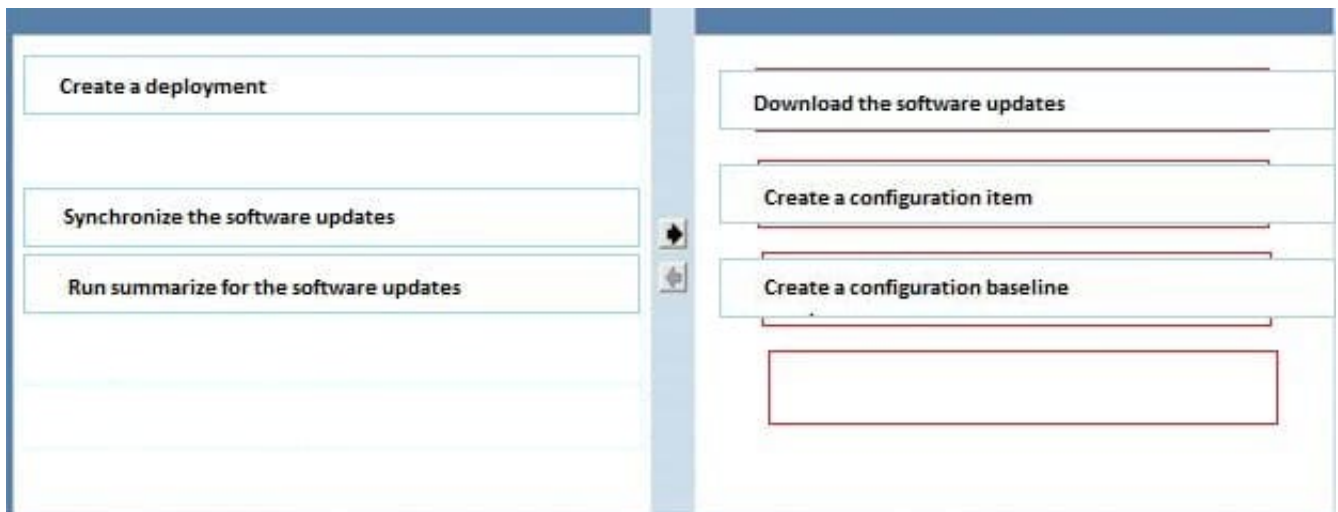
Which three actions should you perform in sequence?



Select and Place:



Correct Answer:



## QUESTION 12

DRAG DROP

Your network contains a System Center 2012 Configuration Manager environment. Three users named User1, User2, and User3 will perform the following tasks:

- User1 will review software metering data and inventory reports.
- User2 will deploy Applications and create alerts.
- User3 will create configuration items.

You need to identify which security role must be assigned to which user.

What should you identify?

To answer, drag the appropriate security role to the correct user in the answer area. Each security role may be used once, more than once, or not at all. Additionally, you may need to drag the split bar between panes or scroll to view content.

Select and Place:

Security Role	Answer Area
Application Administrator	User1 Security role
Application Deployment Manager	User2 Security role
Asset Manager	User3 Security role

Correct Answer:

Security Role	Answer Area
	User1 Asset Manager
	User2 Application Deployment Manager
	User3 Application Administrator

\*

Asset Manager - A security role that grants permissions to administrative users so that they can manage the Asset Intelligence synchronization point, Asset Intelligence reporting classes, software inventory, hardware inventory, and metering rules.

\*

Application Deployment Manager - A security role that grants permissions to administrative users so that they can deploy and monitor applications.

\*

Compliance SettingsManager - A security role that grants permissions to administrative users so that they can define and monitor compliance settings.