

100% Money Back
Guarantee

Vendor:Microsoft

Exam Code:70-417

Exam Name:Upgrading Your Skills to MCSA Windows
Server 2012

Version:Demo

QUESTION 1

Your network contains an Active Directory domain named adatum.com.

The domain contains 10 domain controllers that run Windows Server 2012 R2.

You plan to create a new Active Directory-integrated zone named contoso.com.

You need to ensure that the new zone will be replicated to only four of the domain controllers.

What should you do first?

- A. Create an application directory partition.
- B. Create an Active Directory connection object.
- C. Create an Active Directory site link.
- D. Change the zone replication scope.

Correct Answer: A

Application directory partitions An application directory partition is a directory partition that is replicated only to specific domain controllers. A domain controller that participates in the replication of a particular application directory partition hosts a replica of that partition. Only domain controllers running Windows Server 2003 can host a replica of an application directory partition.

References: <https://www.microsoftpressstore.com/articles/article.aspx?p=2217264andseqNum=2>

QUESTION 2

Your network contains three Active Directory forests. Each forest contains an Active Directory Rights Management Services (AD RMS) root cluster.

All of the users in all of the forests must be able to access protected content from any of the forests.

You need to identify the minimum number of AD RMS trusts required.

How many trusts should you identify?

- A. 2
- B. 3
- C. 4
- D. 6

Correct Answer: D

AD RMS Multi-forest Considerations

References: <http://technet.microsoft.com/en-us/library/dd772648%28v=ws.10%29.aspx>

QUESTION 3

Your role of Network Administrator at ABC.com includes the management of the Active Directory Domain Services (AD DS) domain named ABC.com. The network includes servers that run Windows Server 2012.

A Windows Server 2012 server named ABC-NPS1 and is configured as a Network Policy Server (NPS) server. ABC-NPS1 also runs the DHCP server role and has a DHCP scope for local subnet. You need to ensure that Network Access

Protection (NAP) health requirement checks are performed on only the computers that send a Statement of Health (SoH). You configure a health policy to define the computer health requirements.

How can you ensure that only the computers that send an SoH are checked?

- A. By configuring Connection Properties conditions.
- B. By configuring NAS Port Type constraints.
- C. By configuring MS-Service Class conditions.
- D. By configuring NAP-Capable Computers conditions

Correct Answer: D

QUESTION 4

DRAG DROP

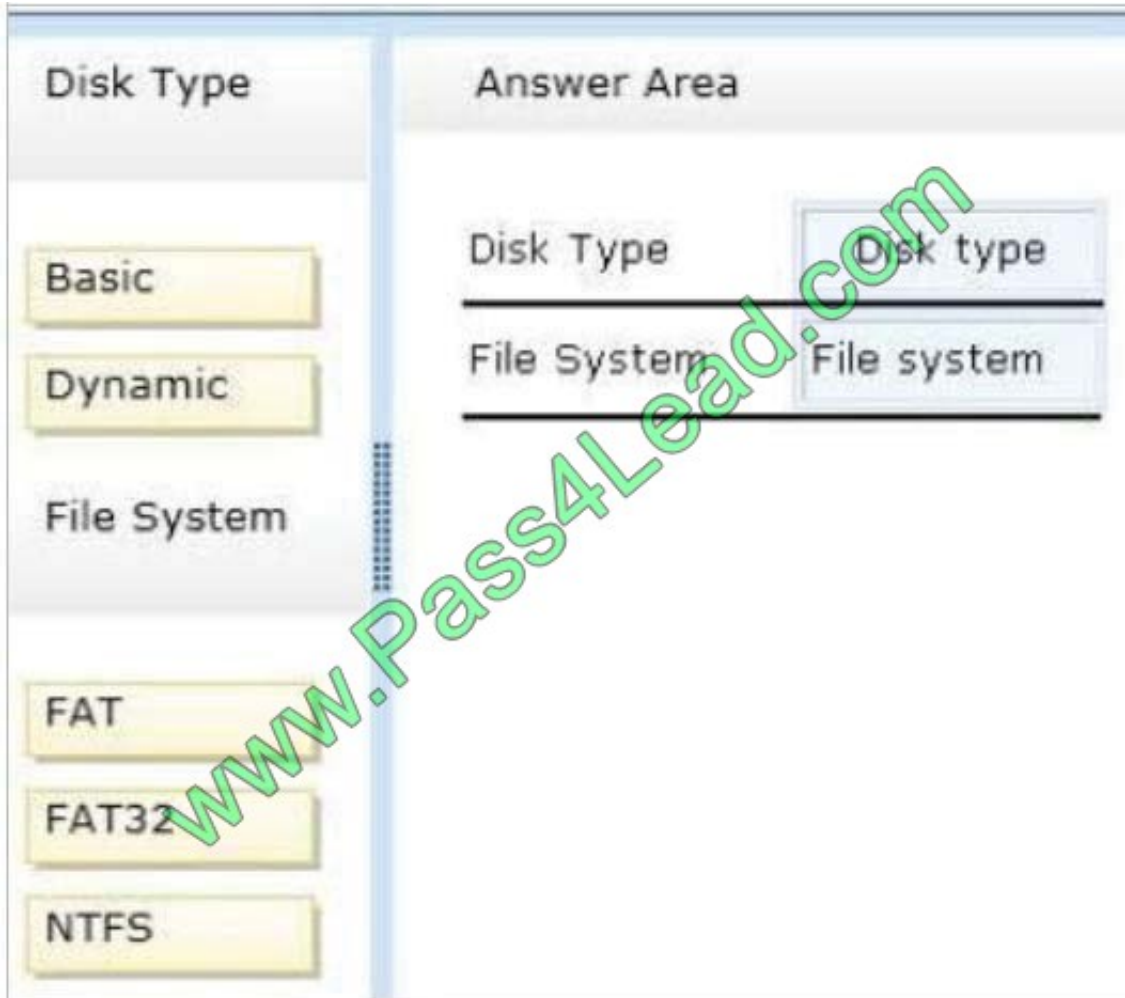
Your network contains an Active Directory domain named contoso.com. The domain contains two member servers named Server1 and Server2 that run Windows Server 2012 R2.

You configure a new failover cluster named Cluster1. Server1 and Server2 are nodes in Cluster1. You need to configure the disk that will be used as a witness disk for Cluster1.

How should you configure the witness disk?

To answer, drag the appropriate configurations to the correct location or locations. Each configuration may be used once, more than once, or not at all. You may need to drag the split bar between panes or scroll to view content.

Select and Place:



Correct Answer:

Disk Type	Answer Area
<input type="text"/>	Disk Type <input type="text" value="Basic"/>
<input type="text" value="Dynamic"/>	File System <input type="text" value="NTFS"/>
<input type="text" value="File System"/>	
<input type="text" value="FAT"/>	
<input type="text" value="FAT32"/>	
<input type="text"/>	

www.Pass4Lead.com

Witness configuration

As a general rule when you configure a quorum, the voting elements in the cluster should be an odd number. Therefore, if the cluster contains an even number of voting nodes, you should configure a disk witness or a file share witness. The cluster will be able to sustain one additional node down. In addition, adding a witness vote enables the cluster to continue running if half the cluster nodes simultaneously go down or are disconnected.

A disk witness is usually recommended if all nodes can see the disk. A file share witness is recommended when you need to consider multisite disaster recovery with replicated storage. Configuring a disk witness with replicated storage is possible only if the storage vendor supports read-write access from all sites to the replicated storage.

The following table provides additional information and considerations about the quorum witness types.

Witness type	Description	Requirements and recommendations
Disk witness	<ul style="list-style-type: none">Dedicated LUN that stores a copy of the cluster databaseMost useful for clusters with shared (not replicated) storage	<ul style="list-style-type: none">Size of LUN must be at least 512 MBMust be dedicated to cluster use and not assigned to a clustered roleMust be included in clustered storage and pass storage validation testsCannot be a disk that is a Cluster Shared Volume (CSV)Basic disk with a single volumeDoes not need to have a drive letterCan be formatted with NTFS or ReFSCan be optionally configured with hardware RAID for fault toleranceShould be excluded from backups and antivirus scanning

References: http://technet.microsoft.com/en-us/library/jj612870.aspx#BKMK_witness

QUESTION 5

You work as a Network Administrator at ABC.com. The network contains a single Active Directory Domain Services (AD DS) domain named ABC.com which spans two sites. The company has a main office and a branch office. The two offices are connected by a slow Wide Area Network (WAN) link.

Both offices have servers running Windows Server 2008 R2 Service Pack 1 (SP1) and Windows Server 2012.

A Windows Server 2012 server named ABC-MainHV1 in the main office runs the Hyper-V Server role. ABC-MainHV1 hosts Virtual Machines (VMs) primarily used by users in the main office. You install a Windows Server 2012 server named

ABC-BranchHV1 in the branch office and configure it to run the Hyper-V Server role. You configure a VM named BranchVM1 on ABCBranchHV1.

You need to configure the virtual environment to ensure that if ABC-BranchHV1 fails, you can run BranchVM1 on ABC-MainHV1. Which two of the following steps should you perform? (Choose two).

A. You should select the "Enable this computer as a replica server" in the Replication Configuration settings on ABC-MainHV1.

B. You should select the "Enable this computer as a replica server" in the Replication Configuration settings on ABC-

BranchHV1.

C. Enable replication on BranchVM1.

D. Change the storage location of the VHD file for BranchVM1.

E. Export BranchVM1.

Correct Answer: AC

QUESTION 6

You have a DNS server named DNS1 that runs windows server 2012 R2.

DNS1 is used to resolve the names of internet resources by using several DNS forwarders.

You need to prevent DNS1 from performing iterative queries if the DNS forwarders are unable to resolve the queries.

Which cmdlet should you use?

A. Remove-DNSServerRootHint

B. Set-DNSServerPrimaryZone

C. Set-DNSServerGlobalNameZone

D. Unregister-DNSServerDirectoryPartition

Correct Answer: A

The Remove-DnsServerRootHint cmdlet removes root hints from the list of root hints on a Domain Name System (DNS) server. When you remove a root hint from a DNS server, the DNS server cannot contact the root DNS server on startup and cannot answer queries for names outside its own authoritative zones.

References: <https://docs.microsoft.com/en-us/powershell/module/dnsserver/remove-dnsserverroothint?view=win10-ps>

QUESTION 7

Your network contains a server named Server1 that has the Network Policy and Access Services server role installed.

AH of the network access servers forward connection requests to Server1.

You create a new network policy on Server1.

You need to ensure that the new policy applies only to connection requests from the 192.168.0.0/24 subnet.

What should you do?

A. Set the Client IP4 Address condition to 192.168.0.0/24.

B. Set the Client IP4 Address condition to 192.168.0.

C. Set the Called Station ID constraint to 192.168.0_0/24.

D. Set the Called Station ID constraint to 192_168.0

Correct Answer: A

After creating a network policy with the New Network Policy Wizard or by creating a custom policy, you can specify the conditions that connection requests must have in order to match the network policy; if the conditions configured in the policy match the connection request, Network Policy Server (NPS) applies the settings designated in the network policy to the connection.

QUESTION 8

Your network contains an Active Directory domain named adatum.com. The domain contains a server named Server1 that runs Windows Server 2012 R2. Server1 is configured as a Network Policy Server (NPS) server and as a DHCP server.

The network contains two subnets named Subnet1 and Subnet2. Server1 has a DHCP scope for each subnet.

You need to ensure that noncompliant computers on Subnet1 receive different network policies than noncompliant computers on Subnet2.

Which two settings should you configure? (Each correct answer presents part of the solution. Choose two.)

- A. The NAS Port Type constraints
- B. The Health Policies conditions
- C. The Called Station ID constraints
- D. The NAP-Capable Computers conditions
- E. The MS-Service Class conditions

Correct Answer: DE

The NAP health policy server uses the NPS role service with configured health policies and system health validators (SHVs) to evaluate client health based on administrator-defined requirements. Based on results of this evaluation, NPS instructs the DHCP server to provide full access to compliant NAP client computers and to restrict access to client computers that are noncompliant with health requirements. If policies are filtered by DHCP scope, then MS-Service Class is configured in policy conditions.

QUESTION 9

DRAG DROP

Your network contains an Active Directory domain named adatum.com. The domain contains a server named DC1 that runs Windows Server 2012 R2.

You plan to install the Active Directory Federation Services server role on DC1 to allow for Workplace Join.

You run nslookup enterpriseregistration and you receive the following results:

Server:	Server1.adatum.com
Address:	192.168.0.100
Name:	adfs1.adatum.com
Address:	192.168.0.70
Aliases:	enterpriseregistration.adatum.com

You need to create a certificate request for DC1 to support the Active Directory Federation Services (AD FS) installation.

How should you configure the certificate request?

To answer, drag the appropriate names to the correct locations. Each name may be used once, more than once, or not at all. You may need to drag the split bar between panes or scroll to view content.

Select and Place:

Names

Adfs1.adatum.com
adatum.com
Dc1.adatum.com
Enterpriseregistration.adatum.com
Server1.adatum.com

Answer Area

Subject name (CN):

Subject Alternative Name (DNS):

Subject Alternative Name (DNS):

Name
Name
Name

Correct Answer:

Names

Adfs1.adatum.com
adatum.com
Dc1.adatum.com
Enterpriseregistration.adatum.com
Server1.adatum.com

Answer Area

www.Pass4Lead.com

Subject name (CN):

Subject Alternative Name (DNS):

Subject Alternative Name (DNS):

Adfs1.adatum.com
Adfs1.adatum.com
Enterpriseregistration.adatum.com

QUESTION 10

Which terminology is being described below?

This trust is a manually created trust that shortens the trust path to improve the speed at which authentications, which occur between domain trees, are processed

- A. Shortcut Trust
- B. Quick Trust
- C. Easy Trust
- D. Simple Trust

Correct Answer: A

QUESTION 11

Your network contains a domain controller named DC1 that runs Windows Server 2012 R2. You create a custom Data Collector Set (DCS) named DCS1.

You need to configure DCS1 to collect the following information: The amount of Active Directory data replicated between DC1 and the other domain controllers The current values of several registry settings

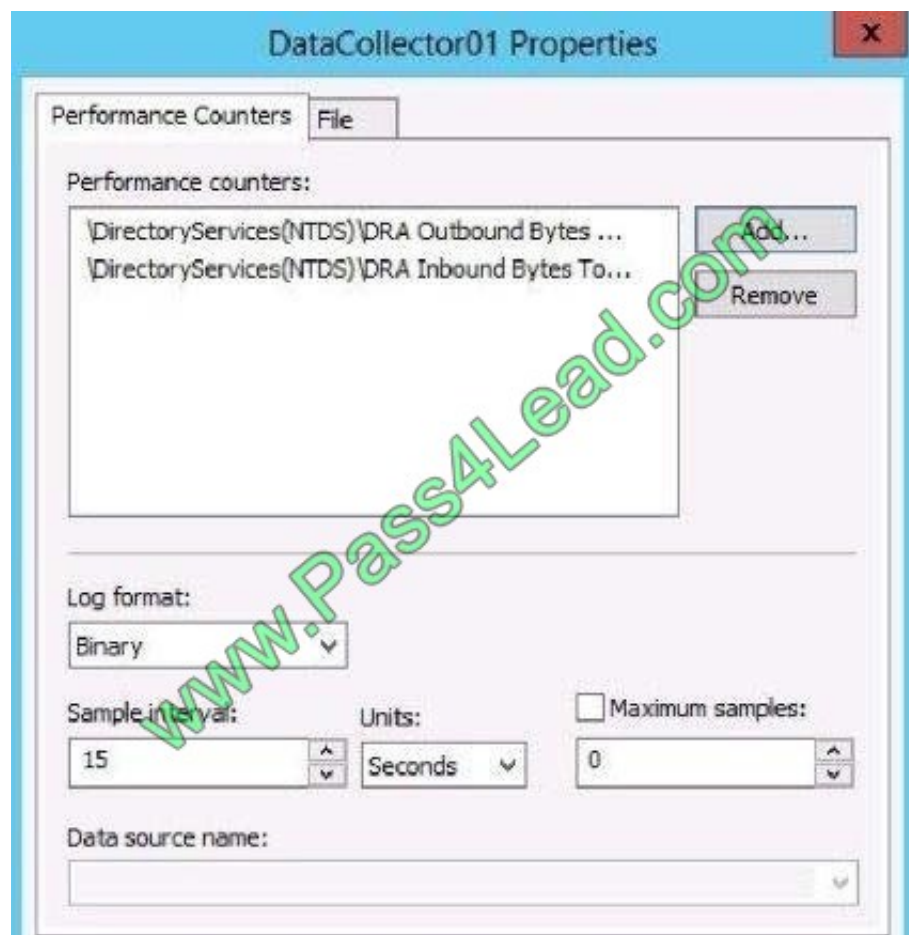
Which two should you configure in DCS1? (Each correct answer presents part of the solution. Choose two.)

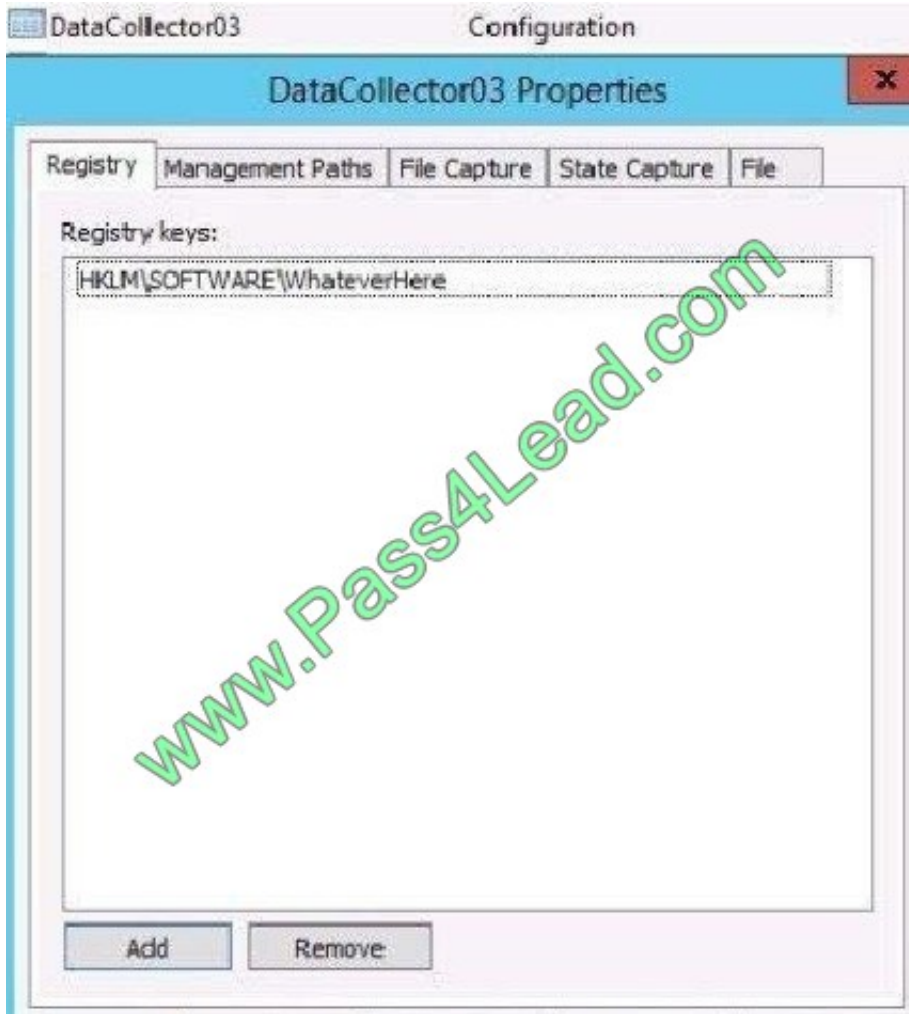
- A. Event trace data
- B. A Performance Counter Alert

C. System configuration information

D. A performance counter

Correct Answer: CD



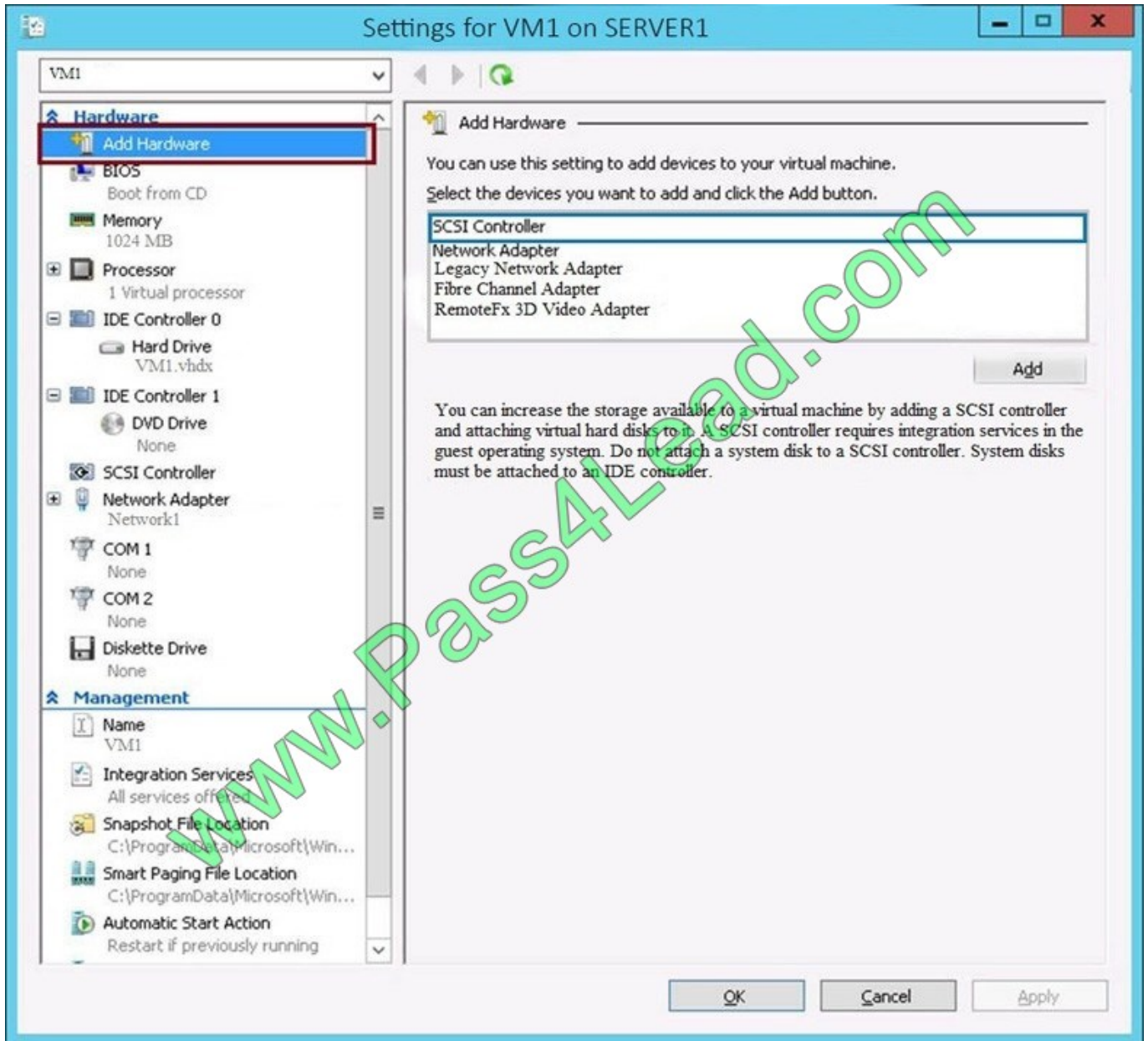


QUESTION 12

Your network contains an Active Directory domain named contoso.com. The domain contains a server named Server1. Server1 runs Windows Server 2012 R2 and has the Hyper-V server role installed.

On Server1, you create a virtual machine named VM1.

When you try to add a RemoteFX 3D Video Adapter to VM1, you discover that the option is unavailable as shown in the following exhibit. (Click the Exhibit button.)



You need to add the RemoteFX 3D Video Adapter to VM1. What should you do first?

- A. On Server1, install the Media Foundation feature
- B. On Server1, install the Remote Desktop Virtualization Host (RD Virtualization Host) role service
- C. On Server1, run the Add-VMRemoteFx3dVideoAdapter cmdlet
- D. On Server1, run the Enable-VMRemoteFxPhysicalVideoAdapter cmdlet

Correct Answer: B

Remote Desktop services are not available in server core installation; you need to add the role.

References: Exam Ref 70-410: Installing and Configuring Windows Server 2012 R2, Chapter 1: Installing and Configuring servers, Objective 1.2: Configure servers, p. 19 [http://technet.microsoft.com/en-us/library/hh848506\(v=wps.620\).aspx](http://technet.microsoft.com/en-us/library/hh848506(v=wps.620).aspx) [http://technet.microsoft.com/en-us/library/hh848520\(v=wps.620\).aspx](http://technet.microsoft.com/en-us/library/hh848520(v=wps.620).aspx)

[http://technet.microsoft.com/en-us/library/ff817586\(v=ws.10\).aspx](http://technet.microsoft.com/en-us/library/ff817586(v=ws.10).aspx)

To Read the [Whole Q&As](#), please purchase the [Complete Version](#) from [Our website](#).

Try our product !

100% Guaranteed Success

100% Money Back Guarantee

365 Days Free Update

Instant Download After Purchase

24x7 Customer Support

Average 99.9% Success Rate

More than 800,000 Satisfied Customers Worldwide

Multi-Platform capabilities - [Windows](#), [Mac](#), [Android](#), [iPhone](#), [iPod](#), [iPad](#), [Kindle](#)

Need Help

Please provide as much detail as possible so we can best assist you.

To update a previously submitted ticket:



 <p>One Year Free Update Free update is available within One Year after your purchase. After One Year, you will get 50% discounts for updating. And we are proud to boast a 24/7 efficient Customer Support system via Email.</p>	 <p>Money Back Guarantee To ensure that you are spending on quality products, we provide 100% money back guarantee for 30 days from the date of purchase.</p>	 <p>Security & Privacy We respect customer privacy. We use McAfee's security service to provide you with utmost security for your personal information & peace of mind.</p>
---	---	--

Any charges made through this site will appear as Global Simulators Limited.

All trademarks are the property of their respective owners.