

100% Money Back
Guarantee

Vendor:Microsoft

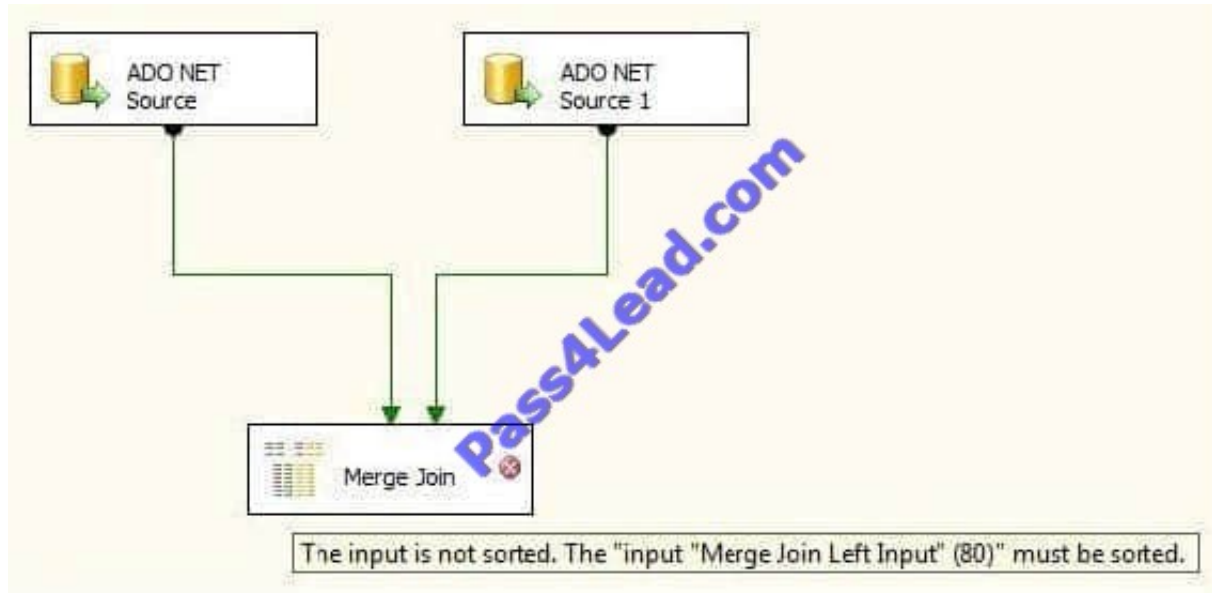
Exam Code:70-448

Exam Name:TS:MS SQL Server 2008.Business
Intelligence Dev and Maintenanc

Version:Demo

QUESTION 1

You are developing a SQL Server 2008 Integration Services (SSIS) data flow that extracts data from two sources. Each source database is located on a different server. Each source is based on a SELECT statement that uses an ORDER BY clause. The data flow is as shown in the following diagram.



When the paths from the two sources are connected to a Merge Join component, the following error message is displayed:

"Data Flow Task: The input is not sorted. The '\\input "Merge Join Left Input" (80)\\' must be sorted."

You need to ensure that data from each query is included in each row in the data flow. You want to achieve this goal by using minimum amount of execution time.

What should you do?

- A. Add a Sort transformation for each data flow.
- B. Add an OLE DB Command transformation for each data flow.
- C. Update the sorting properties in each source component.
- D. Replace the Merge Join transformation with a Union All transformation.

Correct Answer: C

QUESTION 2

You are a database developer and you have about two years experience in creating business Intelligence (BI) by using SQL Server2008.

Now you are employed in a company named NaproStar which uses SQL Server2008. You work as the technical support.

Now you are in charge of a SQL Server 2008 Reporting Services (SSRS) database server. Large quantities of reports are contained in the instance, and the reports execute slowly. Multiple execution snapshots are contained in the reports.

There is a new production server and you have installed SSRS on the server.

Now you receive an e-mail from your company CIO, according to the requirement of the CIO, the reports and their snapshots have to be moved to the production server as soon as possible.

You've been assigned this task. So what action should you perform to achieve this goal?

- A. In order to achieve this goal, you should use Business Intelligence Development Studio (BIDS) to deploy the solutions
- B. In order to achieve this goal, you should use the rs.exe utility
- C. In order to achieve this goal, you should copy the Report Server databases to the production server. Then use the Reporting Services Configuration tool to configure the server.
- D. In order to achieve this goal, you should use the rskeymgmt.exe utility

Correct Answer: C

QUESTION 3

You create a SQL Server 2008 Analysis Services (SSAS) solution.

Your organization wants to track the times that products are ordered, shipped, and received in an existing cube.

You need to enable this tracking based on Sales, Orders, and Shipments fact tables.

What should you do?

- A. Add many-to-many relationships between the Sales, Orders, and Shipments fact tables.
- B. Add one Time dimension to each fact table.
- C. Add a role-playing Time dimension to the cube via the Dimension Usage view.
- D. Add a Time table to the underlying data and then add the table to the cube's Data Source View.

Correct Answer: C

QUESTION 4

You maintain a SQL Server 2008 Analysis Services (SSAS) database on a default instance.

You plan to document the Analysis Services performance information.

You need to collect information related to the temporary file usage when the database is processed.

Which object should you use?

- A. MSAS 2008: Memory
- B. MSAS 2008: Cache
- C. MSAS 2008: Proc Aggregations
- D. MSAS 2008: Storage Engine Query

Correct Answer: C

QUESTION 5

You are developing a SQL Server 2008 Analysis Server (SSAS) method which includes a measure group called TestGroup with a one partition for Company.com. The condition listed below should be included

*

Searches which utilize TestGroup on the newest version of the information.

*

In a many aspects format, the whole collections which are member of TestGroup are reserved.

In order to solve the problem, which is the correct answer?

- A. You should configure Real-time hybrid online analytical processing (HOLAP)
- B. You should configure Real-time relational offline analytical processing (ROLAP).
- C. You should configure scheduled relational offline analytical processing (ROLAP).
- D. You should configure scheduled online processing (MOLAP).

Correct Answer: A

HYBRID OLAP As its name suggests, HOLAP is a hybrid between MOLAP and ROLAP. In HOLAP, the cube data remains in the relational store, but the aggregations are stored on the SSAS server. HOLAP is the most efficient mode in terms of disk space because detail-level data is not duplicated, as it is with MOLAP, and HOLAP requires less space to store aggregations than ROLAP does.

----- EXAM TIP Choose the HOLAP storage mode if you want to store cube aggregations on the SSAS server but keep the fact data in the source database.

----- In terms of query performance, HOLAP scores in the middle. If the query can be satisfied entirely by existing aggregations, HOLAP performs as well as MOLAP. But if it cannot be satisfied, the query is sent to the relational database, and performance suffers. In terms of processing times, HOLAP cubes might be processed faster than either MOLAP or ROLAP cubes because data is read only once to create aggregations. However, because SSAS has an efficient storage architecture, in real life MOLAP and HOLAP should give you comparable processing times, so it is best to consider HOLAP only for large historical partitions that are queried infrequently.

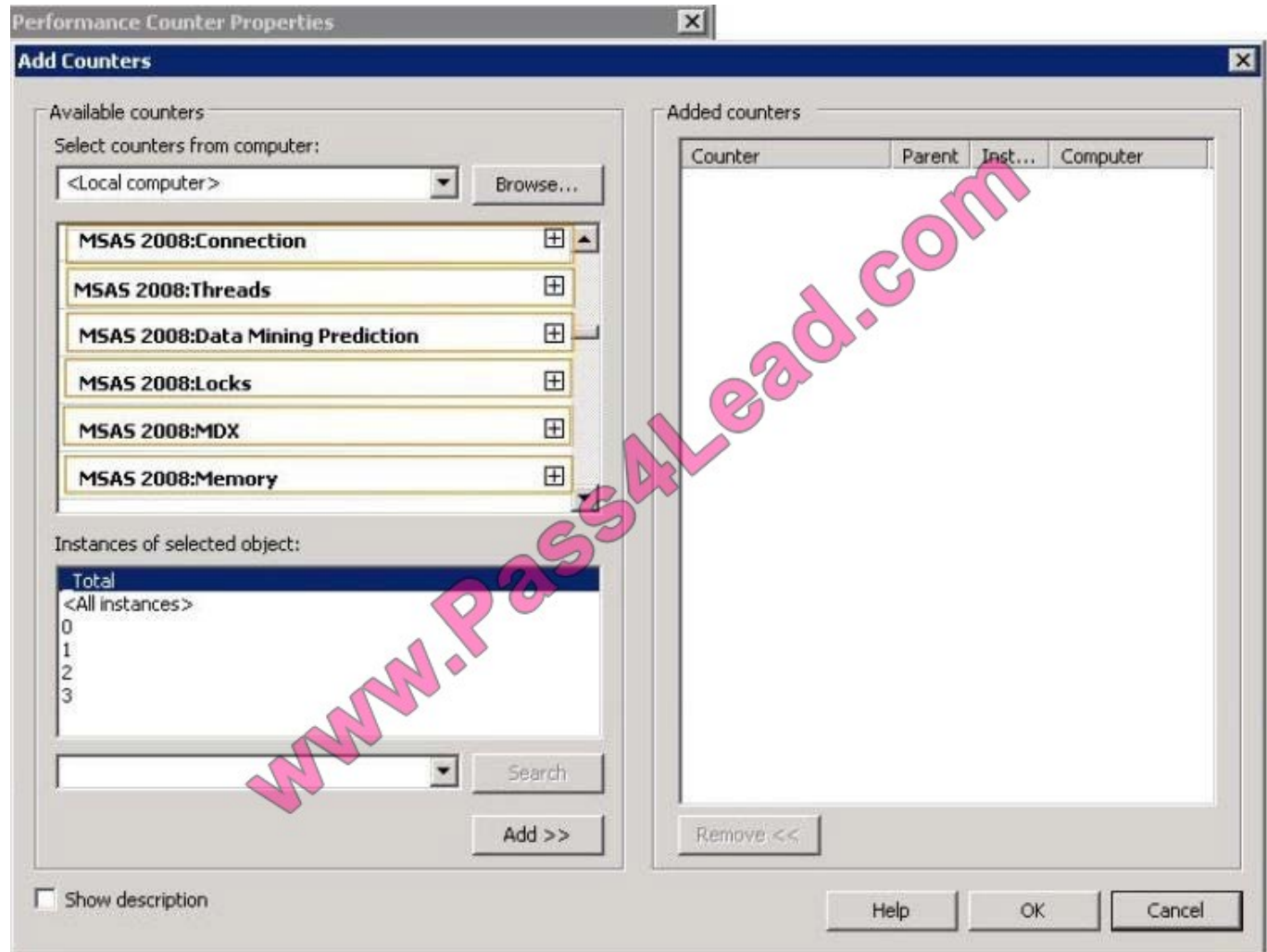
QUESTION 6

You maintain a SQL Server 2008 Analysis Services (SSAS) database on a default instance.

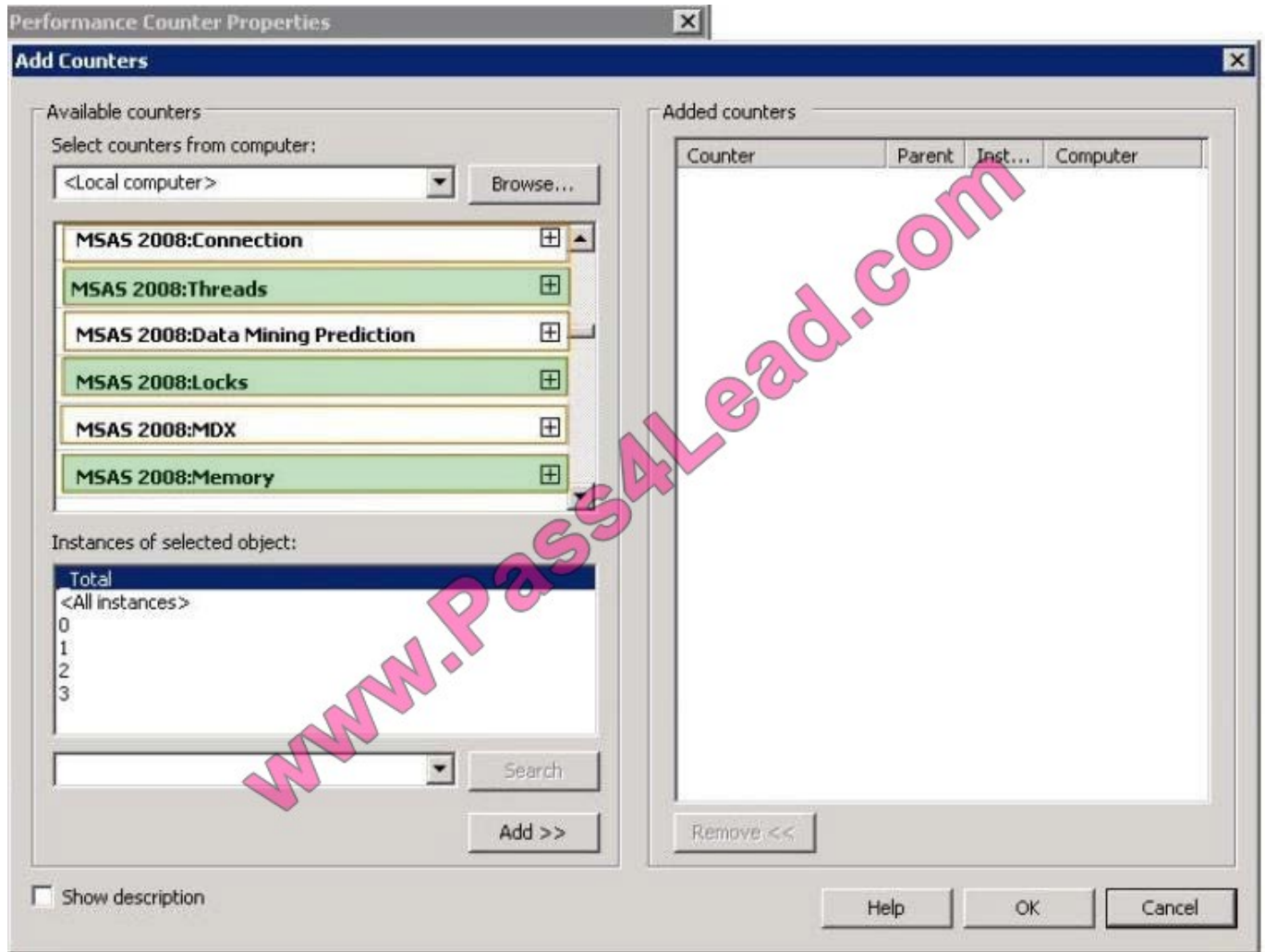
You need to collect information to determine if performance issues are related to hardware limitations or latch wait contention.

Which three counters should you use? (To answer, select the three appropriate counters in the answer area.)

Hot Area:



Correct Answer:



QUESTION 7

You develop a SQL Server 2008 Integration Services (SSIS) package.

You discover that the package fails and returns an error code of 0x80040E4D.

You need to ensure that the package generates the debug dump files that are associated with the package only when this error code occurs.

Which DTEXec command line option should you use?

- A. WarnAsError
- B. Dump
- C. DumpOnError
- D. Logger

Correct Answer: B

Dump error code

Creates the debug dump files, .mdmp and .tmp, when one or more specified events occur while the package is running. The error code argument specifies the type of event code--error, warning, or information--that will trigger the system to create the debug dump files. To specify multiple event codes, separate each error code argument by a semi-colon (;).

Incorrect answers:

/DumpOnError, triggers a memory dump anytime an error (any error) is encountered.

QUESTION 8

You create a SQL Server 2008 Analysis Services (SSAS) solution. The solution has the following components:

A dimension named DimTime that contains an attribute named Month

A measure group named FactSales that references the DimTime dimension

You need to ensure that the aggregations designed on FactSales always include the Month attribute.

What should you do?

A.

Set the Usage property appropriately.

B.

Set the IsAggregatable property appropriately.

C.

Set the AggregationUsage property appropriately.

D.

Set the AttributeHierarchyEnabled property appropriately.

Correct Answer: C

QUESTION 9

You maintain the SQL Server 2008 Integration Services (SSIS) instance for a healthcare device manufacturing company.

You develop a package named Memberinformation.dtsx with Windows authentication.

You deploy it to SQL Server. You need to validate Memberinformation.dtsx packages without package execution.

Which command syntax should you use?

- A. dtexec /sq Memberinformation /verifyv {a400e860-38d5-11c5-11ce-ae62-08002b2b79ef}
- B. dtexec /sq Memberinformation /ser productionServer /va
- C. dtexec /f "Z:\Memberinxormation.dtsx" /conf "Z:\Memberiniormationconfig.cfg"
- D. dtexec /f "2:\Member^nformation.dtsx" /l "DTS.LogProviderTextFile;2:\loginformation.txt"

Correct Answer: C

QUESTION 10

You design a SQL Server 2008 Integration Services (SSIS) package.

The package assigns a value to a variable by using a Script task. When the package executes successfully, the value of the variable is not updated.

You need to modify the package so that the Script task can assign the value of the variable.

What should you do?

- A. Modify the variable scope to the package.
- B. Modify the RaiseChangedEvent property of the variable.
- C. Modify the EvaluateAsExpression property of the variable.
- D. Modify the variable scope to the script task.

Correct Answer: A

Variables in SSIS, like in other programming languages, can have different scopes. For instance, a package scope means the variable can be accessed anywhere within the package, but a variable with a Data Flow scope can only be accessed within the specified Data Flow task.

QUESTION 11

You are a database developer and you have about two years experience in creating business intelligence (BI) solutions by using SQL Server2008.

Now you are employed in a company which is named NaproStar and work as the technical support for the company which uses SQL Server2008 Analysis Services (SSAS) solution. To meet the business development, a dimension named

DimSales is created with an Amount attribute, and then it is used in a cube structure.

Now you are assigned a task to make sure that aggregations have no relationship with the Amount attribute.

What action should you perform to accomplish this task?

- A. The MembersWithData property of the Amount attribute should be set to False to accomplish this task.
- B. The IsAggregatable property of the Amount attribute should be set to False to accomplish this task.

- C. The AttributeHierarchyEnabled property of the Amount attribute should be set to False to accomplish this task.
- D. The MembersWithData property of the Amount attribute should be set to NonLeafDataHidden to accomplish this task
- E. The GroupingBehavior property of the Amount attribute should be set to DiscourageGrouping to accomplish this task.

Correct Answer: C

QUESTION 12

You maintain a SQL Server 2008 Analysis Services (SSAS) instance.

You are developing a new data mining structure.

You need to set the Microsoft Clustering Algorithm to meet the following requirements:

Allow data points to be assigned to two clusters.

Generate a probability for each combination of data point and cluster.

Provide the fastest results on large datasets (greater than one million records).

Which clustering method should you use?

- A. Scalable Expectation Maximization (EM)
- B. Non-scalable Expectation Maximization (EM)
- C. Non-scalable K-Means
- D. Scalable K-Means

Correct Answer: C

To Read the [Whole Q&As](#), please purchase the [Complete Version](#) from [Our website](#).

Try our product !

100% Guaranteed Success

100% Money Back Guarantee

365 Days Free Update

Instant Download After Purchase

24x7 Customer Support

Average **99.9%** Success Rate

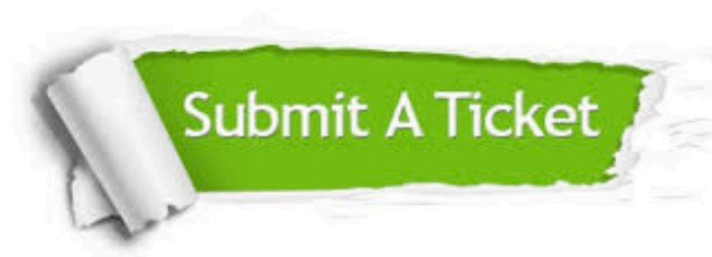
More than **800,000** Satisfied Customers Worldwide

Multi-Platform capabilities - **Windows, Mac, Android, iPhone, iPod, iPad, Kindle**

Need Help

Please provide as much detail as possible so we can best assist you.

To update a previously submitted ticket:



 One Year Free Update <p>Free update is available within One Year after your purchase. After One Year, you will get 50% discounts for updating. And we are proud to boast a 24/7 efficient Customer Support system via Email.</p>	 Money Back Guarantee <p>To ensure that you are spending on quality products, we provide 100% money back guarantee for 30 days from the date of purchase.</p>	 Security & Privacy <p>We respect customer privacy. We use McAfee's security service to provide you with utmost security for your personal information & peace of mind.</p>
---	---	--

Any charges made through this site will appear as Global Simulators Limited.

All trademarks are the property of their respective owners.