

**100%** Money Back  
**Guarantee**

**Vendor:**Microsoft

**Exam Code:**70-662

**Exam Name:**TS: Microsoft Exchange Server

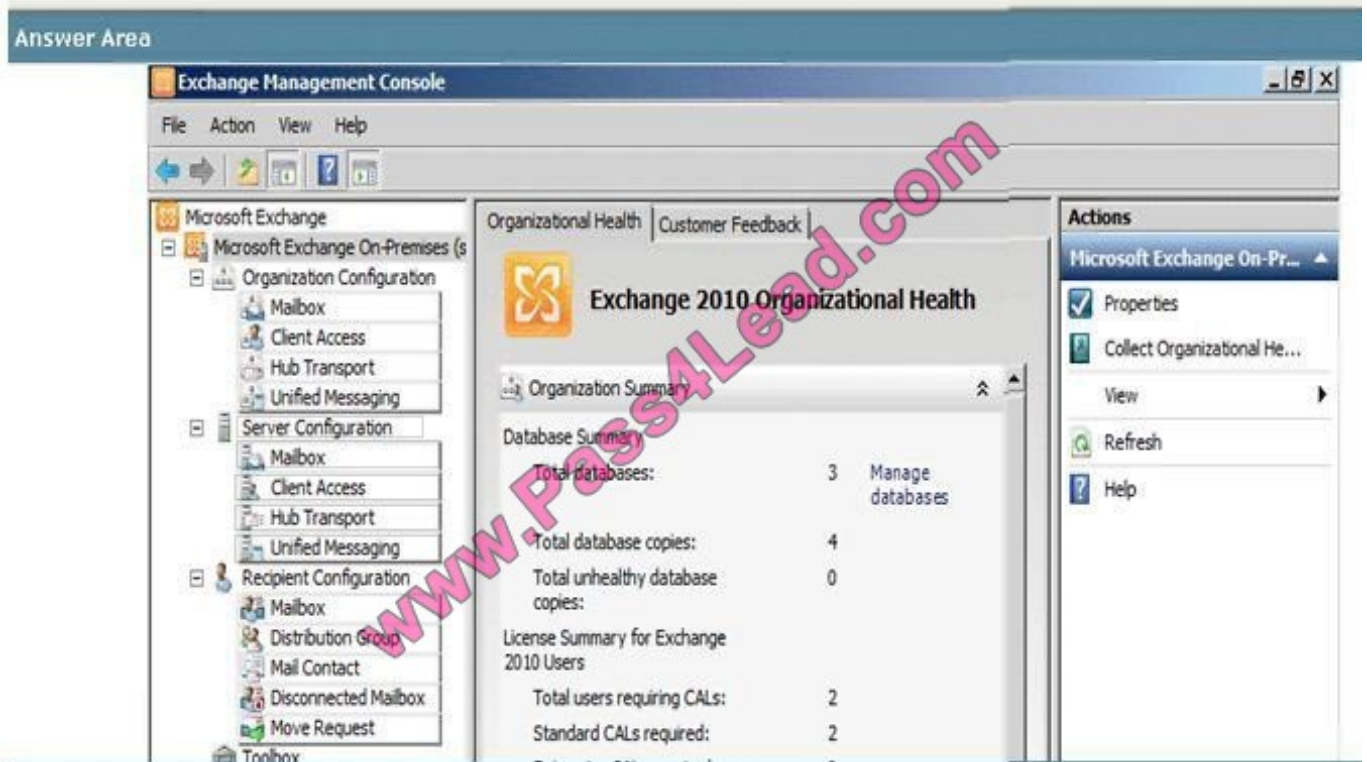
**Version:**Demo

### QUESTION 1

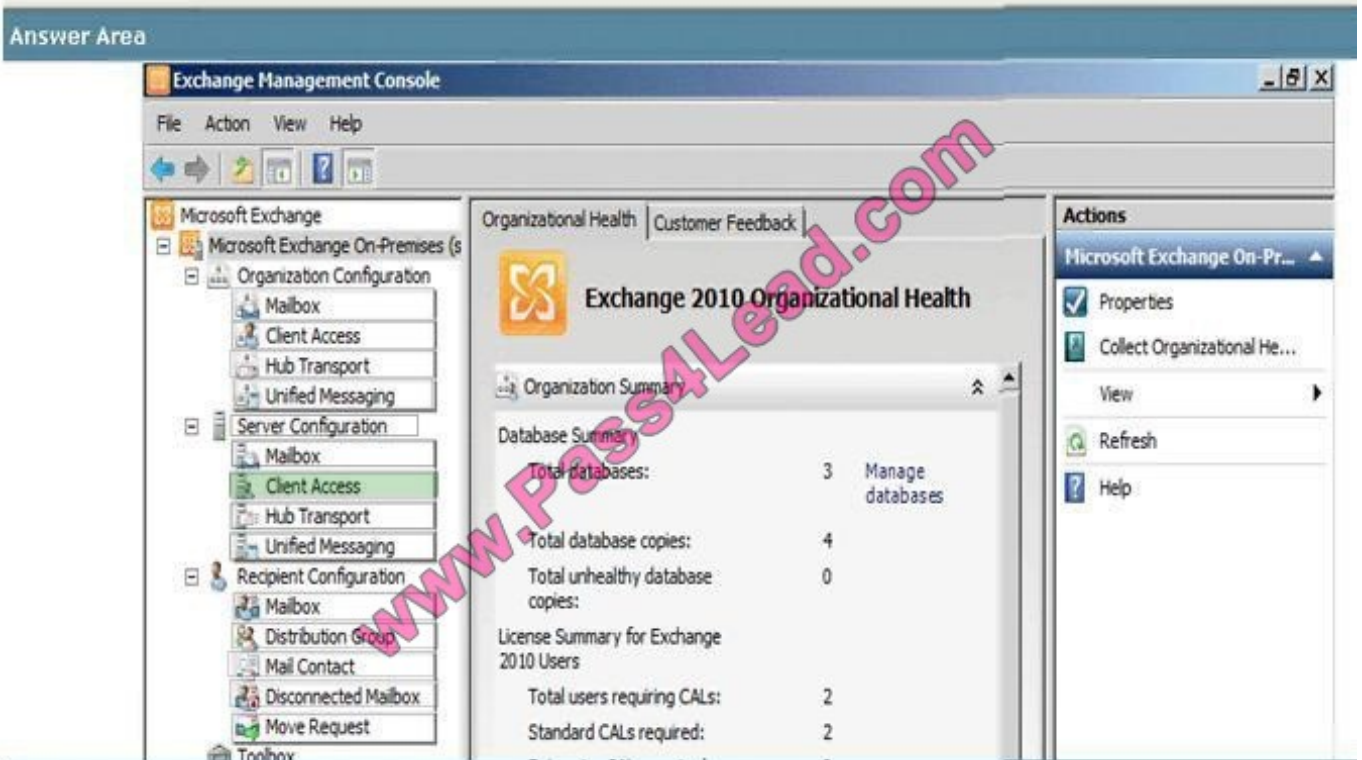
You need to modify the internal URL of the Exchange ActiueSync virtual directory.

Which node should you select from the Exchange Management Console (EMC) to make the modification? To answer, select the appropriate node in the answer area.

Hot Area:



Correct Answer:



## QUESTION 2

You purchase a wildcard certificate. You plan to use the certificate for Outlook Anywhere.

You need to configure an Exchange organization to use the certificate.

What should you do first?

- A. From the Exchange Management Shell, modify the properties of the WEB Outlook Provider.
- B. From the Exchange Management Shell, modify the properties of the EXPR Outlook Provider.
- C. From the Internet Information Services (IIS) Manager, modify the properties of the RPC virtual directory.
- D. From the Internet Information Services (IIS) Manager, modify the properties of the Autodiscover virtual directory.

Correct Answer: B

## QUESTION 3

You have an Exchange Server 2010 organization.

You need to use Role Based Access Control (RBAC) to provide a user the ability to manage recipients in a specific organizational unit (OU).

What should you do first?

- A. Create a new direct role assignment.
- B. Create a new management role assignment policy.
- C. Create a new management scope.
- D. Modify the default management scope.

Correct Answer: C

---

#### QUESTION 4

You work as the Enterprise Exchange Administrator at ABC.com. The ABC.com network is running in a Microsoft Exchange Server 2010 environment. How can you find all mailboxes that exceed 2 GB in size?

- A. You can use the Get-MailboxStatistics cmdlet.
- B. You can use the Test-Mailflow cmdlet.
- C. You can use the Get-StoreUsageStatistics cmdlet.
- D. You can use the Test-ServiceHealth cmdlet.

Correct Answer: A

---

#### QUESTION 5

You have an Exchange Server 2010 Service Pack 1 (SP1) organization named contoso.com. You need to view a list of all the users assigned to the Records Management role group. What should you do?

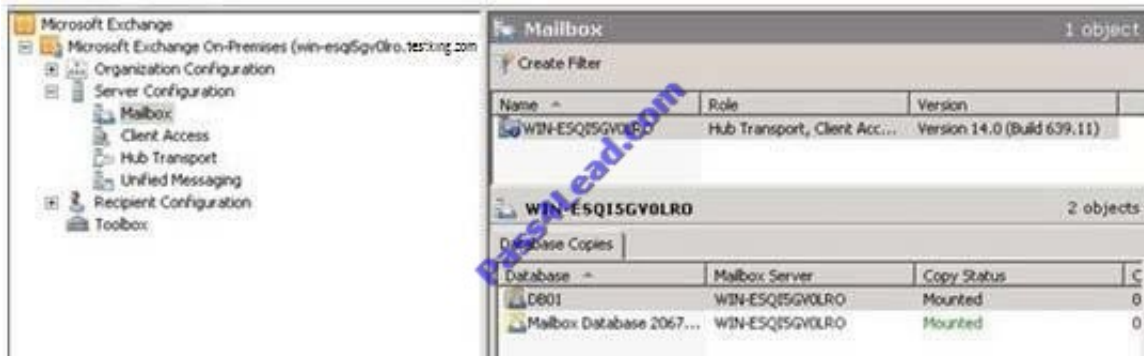
- A. From the Exchange Management Shell, run the Get-RoleGroupMember cmdlet.
- B. From the Exchange Management Shell, run the Get-RoleAssignmentPolicy cmdlet.
- C. From the Exchange Control Panel (ECP), click the User Roles tab.
- D. From the Exchange Management Shell, run the Get-ManagementRoleAssignment cmdlet.

Correct Answer: A

---

#### QUESTION 6

You are the Exchange Administrator of the ABC Corporation's Exchange 2010 organization. You are concerned about the total size of items that are stored in a public folder named ExpenseReport. Which of the following techniques should you use to determine the size of items and the attachments in the public folder?



- A. Run the following script: `Get-PublicFolderItemStatistics -Identity "\ExpenseReport\2009"`.
- B. Click on the Statistics tab in the properties of the public folder with the Public Folder Management Console.
- C. Use the MExchangeIS Public object in System Monitor.
- D. Use the MExchangeIS object in System Monitor.

Correct Answer: A

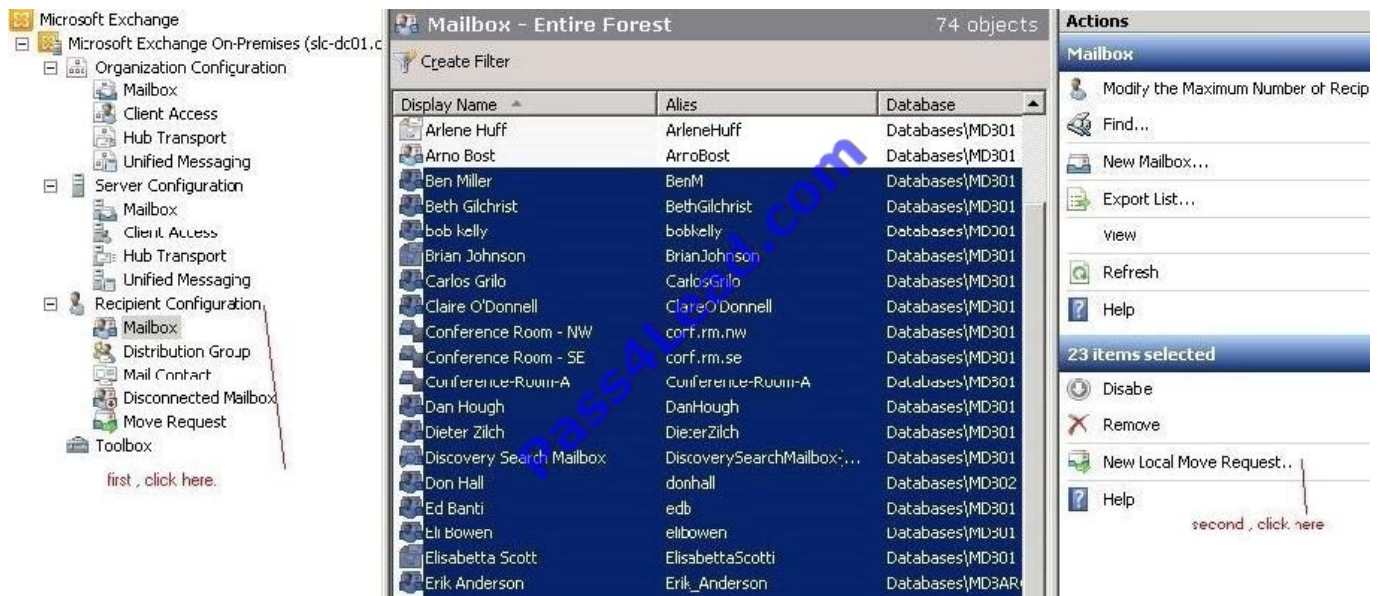
#### QUESTION 7

You have an Exchange Server 2007 organization. You install a new Exchange Server 2010 Mailbox server.

You need to move all mailboxes to the Exchange Server 2010 server. What are two possible ways to achieve this goal? (Each correct answer presents a complete solution. Choose two.)

- A. From the Exchange Server 2007 Exchange Management Shell, run the `Move-Mailbox` cmdlet.
- B. From the Exchange Server 2010 Exchange Management Shell, run the `New-MoveRequest` cmdlet
- C. From the Exchange Server 2007 Exchange Management Console (EMC), run the Move Mailbox wizard.
- D. From the Exchange Server 2010 Exchange Management Console (EMC), run the New Local Move Request wizard.

Correct Answer: BD



When moving mailboxes, consider the following:

You can't use the Exchange System Manager or Active Directory Users and Computers to move mailboxes from Microsoft Exchange Server 2003 to Exchange Server 2010.

You can't use the Move-Mailbox cmdlet in Exchange Server 2007 to move mailboxes from Exchange 2007 to Exchange 2010.

When you move mailboxes, users won't be able to view their message tracking information. <http://technet.microsoft.com/en-us/library/dd298174.aspx>

## QUESTION 8

Your network contains a single Active Directory site.

You install 10 new Exchange Server 2010 Service Pack 1 (SP1) Client Access servers. All servers are configured to use a wildcard certificate.

Users connect to their mailboxes by using Windows Mobile 6.5 devices. All devices are configured to connect to cas.contoso.com.

You need to ensure that the users can connect to their mailboxes by using mail.contoso.com. Which cmdlet should you use?

- A. set-activesyncdeviceaccessrule
- B. set-activesyncmailboxpolicy
- C. set-activesyncorganizationsetting
- D. set-activesyncvirtualdirectory

Correct Answer: D

---

**QUESTION 9**

You have an Exchange Server 2010 organization. You need to identify whether an administrator has made a configuration change in the Exchange organization. What should you run?

- A. Get-EventLogLevel
- B. Get-ExchangeServer
- C. Exchange Best Practices Analyzer
- D. Microsoft Baseline Security Analyzer (MBSA)

Correct Answer: C

---

**QUESTION 10**

2010 Server has Message Tracking enabled. You need to modify storage location of message tracking logs. What should you do?

- A. From the Shell Management Console apply Set-EventLogLevel cmdlet
- B. From the Shell Management Console apply Set-TransportConfig cmdlet
- C. From the Exchange Management Console (EMC) modify properties of Mailbox Database
- D. From the Exchange Management Console (EMC) modify properties of Hub Transport Server object

Correct Answer: D

---

**QUESTION 11**

Your network contains an Exchange Server 2010 server. You need to prevent e-mail messages that contain specific words from being sent between users in the organization. What should you do?

- A. Create a transport rule.
- B. Create an Outlook Protection Rule.
- C. Configure the content filtering feature.
- D. Configure the sender reputation feature.

Correct Answer: A

---

**QUESTION 12**

You have an Exchange organization. All servers in the organization have Exchange Server 2010 Service Pack 1 (SP1) installed.

All users have Windows Mobile 6.5 devices that connect to the organization by using Exchange ActiveSync.

A user named User1 reports that she lost her device and successfully performed a remote wipe of the device.

User1 later reports that she located her device.

User1 configures the device to connect to Exchange ActiveSync and discovers that the connection fails.

You need to ensure that User1 can connect her device by using Exchange ActiveSync.

What should you do?

- A. Instruct User1 to use the Exchange Control Panel (ECP) to modify the device list.
- B. Instruct User1 to change her user account password.
- C. Instruct User1 to perform a hardware reset on the device.
- D. Run the Set-ActiveSyncDeviceAccessRule cmdlet from the Exchange Management Shell.

Correct Answer: A



To Read the [Whole Q&As](#), please purchase the [Complete Version](#) from [Our website](#).

## Try our product !

100% Guaranteed Success

100% Money Back Guarantee

365 Days Free Update

Instant Download After Purchase

24x7 Customer Support

Average 99.9% Success Rate

More than 800,000 Satisfied Customers Worldwide

Multi-Platform capabilities - [Windows](#), [Mac](#), [Android](#), [iPhone](#), [iPod](#), [iPad](#), [Kindle](#)

## Need Help

Please provide as much detail as possible so we can best assist you.

To update a previously submitted ticket:



 <p><b>One Year Free Update</b> Free update is available within One Year after your purchase. After One Year, you will get 50% discounts for updating. And we are proud to boast a 24/7 efficient Customer Support system via Email.</p>	 <p><b>Money Back Guarantee</b> To ensure that you are spending on quality products, we provide 100% money back guarantee for 30 days from the date of purchase.</p>	 <p><b>Security &amp; Privacy</b> We respect customer privacy. We use McAfee's security service to provide you with utmost security for your personal information &amp; peace of mind.</p>
---------------------------------------------------------------------------------------------------------------------------------------------------------------------------------------------------------------------------------------------------------------------------------------------------------------------------------	-------------------------------------------------------------------------------------------------------------------------------------------------------------------------------------------------------------------------------------------------------------	------------------------------------------------------------------------------------------------------------------------------------------------------------------------------------------------------------------------------------------------------------------------------------

Any charges made through this site will appear as Global Simulators Limited.

All trademarks are the property of their respective owners.