

100% Money Back
Guarantee

Vendor:Microsoft

Exam Code:70-687

Exam Name:Configuring Windows 8.1

Version:Demo

QUESTION 1

A company has 100 client computers that run Windows 8.

The client computers are connected to a corporate private network. Users are currently unable to connect from their home computers to their work computers by using Remote Desktop.

You need to ensure that users can remotely connect to their office computers by using Remote Desktop. Users must not be able to access any other corporate network resource from their home computers.

What should you do?

- A. Configure a Virtual Private Network connection.
- B. Configure the Remote Desktop Gateway IP address in the advanced Remote Desktop Connection settings on each client.
- C. Configure the local resource settings of the Remote Desktop connection.
- D. Configure a DirectAccess connection.

Correct Answer: B

Configure the Remote Desktop Gateway IP address in the advanced Remote Desktop Connection settings on each client. While connecting the computers you will find a couple of options related to VPN and Desktop Assistance.

See Understanding Authorization Policies for Remote Desktop Gateway: <http://technet.microsoft.com/en-us/library/cc731435.aspx>

RD RAPs will enable us to control remote user access to internal network resources. With RD CAPs we can control which Users or Computers can connect via RDP. Configure the Remote Desktop Gateway IP address in the advanced Remote Desktop Connection settings on each client.

Remote Desktop

To connect to a remote PC, enter the PC name below.

With Remote Desktop, you can do more than connect to other PCs.

- Work with apps and desktops that the administrator has set up for you.
[Access RemoteApp and Desktop Connections](#)
- Connect to PCs on your corporate network without setting up a VPN.
[Use a Remote Desktop Gateway server](#)

192.168.137.1

Connect

DirectAccess is for Windows Server 2008/2012/Win 7 Ultimate/Enterprise/Win 8 Enterprise only.

RD Gateway setup is only for servers.

Create VPN through manage networks. File -> Allow incoming connections. Connect through Internet and create VPN which will allow one computer at a time to view the hosts resources, and only the hosts resources unlike standard VPNs.

QUESTION 2

You are the network administrator for Contoso, Ltd. Many users have Windows 8.1 laptops, and your IT department configures all of them to use BitLocker on all fixed drives.

Many users carry sensitive corporate data on their USB drives.

You need to enable BitLocker for these USB drives.

Which key protector option should you use?

- A. A password
- B. A startup key
- C. A.tpm file
- D. TPM

Correct Answer: A

QUESTION 3

A company has Windows 8.1 client computers. Users store data files in their user profile libraries. You need to ensure that you can restore data files to any date while minimizing system overhead. Which two actions should you perform? (Each answer presents part of the solution. Choose two.)

- A. Enable Storage Spaces.
- B. Configure settings to save copies of files daily.
- C. Turn on File History.
- D. Configure Windows 7 File Recovery.

Correct Answer: BC

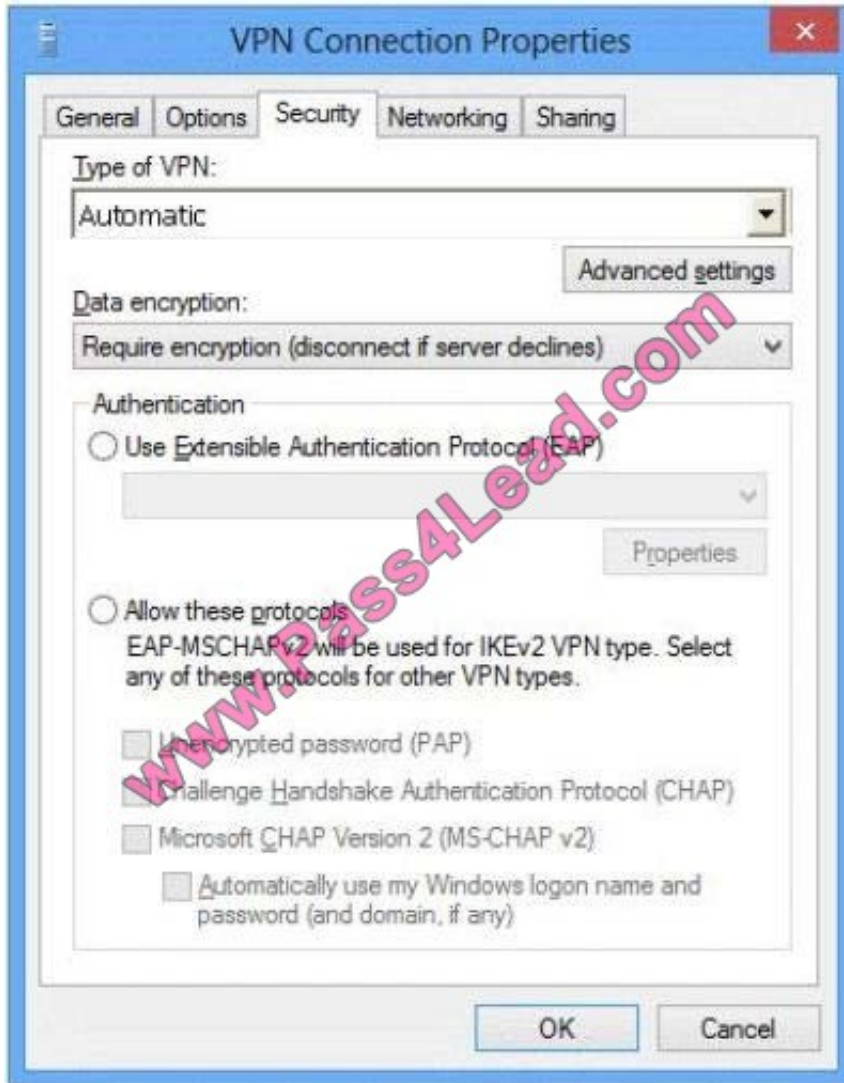
QUESTION 4

You install Windows 8 Enterprise on new laptops that will be shipped to remote users in the sales department of your company. You create new VPN connections on the laptops.

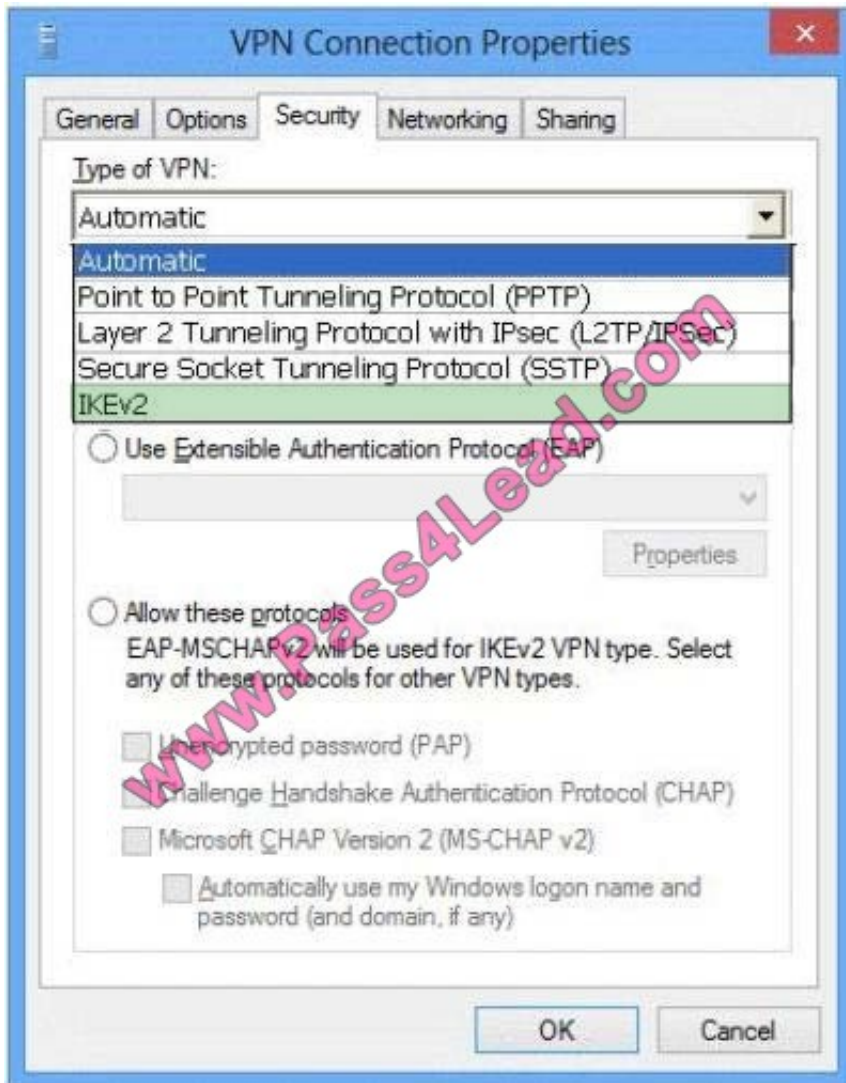
Your company security policy requires that the maximum allowed network outage time for the VPN connection should be less than 10 minutes.

You need to configure the required timeout.

Which protocol should you use? (To answer, configure the appropriate option or options in the answer area.)



Correct Answer:



QUESTION 5

A company has a main office and several branch offices. The company has an Active Directory Domain Services (AD DS) domain. All client computers run Windows 8. All printers are deployed to all client computers by using Group Policy.

When a user attempts to print from his portable client computer while at a branch office, the main office printer is set as his default printer.

You need to ensure that a location-specific default printer for each branch office is set for the user.

What should you do?

- A. Create a Group Policy object (GPO) that enables the Computer location policy setting.
- B. In the Manage Default Printers dialog box, select the Always use the same printer as my default printer option.

- C. In the Manage Default Printers dialog box, select the Change my default printer when I change networks option.
- D. Create a Group Policy object (GPO) that enables the Allow Print Spooler to accept client connections policy setting.

Correct Answer: C

QUESTION 6

You install a new hard drive as drive D on a Windows 8.1 computer. The computer is shared by two users. You need to prevent either user from using more than half the available space on drive D of the computer. What should you do?

- A. Reconfigure drive D and create two volumes of equal size.
- B. Create a share for each user on drive D.
- C. Configure quota management on drive D.
- D. Configure Storage Spaces on drive D.

Correct Answer: C

QUESTION 7

A company has Windows 8.1 client computers.

A user stores files in multiple locations.

You need to determine which of the locations will be included in File History.

Which three of the following file locations are included in File History? (Each correct answer presents part of the solution. Choose three.)

- A. %appdata%
- B. Public Documents and Public Pictures
- C. My Documents and My Pictures
- D. Contacts, Desktop, and Favorites
- E. C:\Program Files
- F. All user profile folders

Correct Answer: ABD

QUESTION 8

You are the desktop administrator for your company, which uses Windows 8.1 computers.

The company decides to use virtual disks at your location so the programmers can build and test applications in a

closed network.

You need to use the file given as a virtual hard disk and be able to boot to the vhd.

What should you do?

- A. Copy the vhd file to the root of C:\; run bcdedit and add an entry to the boot options that includes the path to the vhd.
- B. Attach the vhd in computer management and add it to the Boot Menu.
- C. Copy the vhdfile to the root of C:\, open msconfig, and choose Safe Boot and Alternate Shell.
- D. Move the vhd file to a network share, map the network share, and allow a network boot.

Correct Answer: A

QUESTION 9

A company is setting up a new branch office. You deploy 10 new Windows 8.1 64-bit client computers in the branch office.

The computers cannot connect to the Internet. You run the ipconfig command on one computer. The following output depicts a portion of the results.

```
IPv4 Address. . . . . : 169.254.2.45<Preferred>
Subnet Mask . . . . . : 255.255.0.0
Default Gateway . . . . :
```

You need to ensure that the computers can connect to the Internet. What should you do?

- A. Deploy a Dynamic Host Configuration Protocol (DHCP) server. Configure all computers to use DHCP.
- B. Deploy an Internet Information Services (IIS) server. Configure all computers to use IIS.
- C. Deploy a Domain Name System (DNS) server. Configure all computers to use DNS.
- D. Deploy a Windows Internet Name Service (WINS) server. Configure all computers to use WINS.

Correct Answer: A

QUESTION 10

A Company has 10 computers that run windows vista. The computers are members of a workgroup.

The company plans to upgrade the computers to windows 8. You are planning a deployment strategy.

You need to ensure that users can log on to their existing accounts and access their existing data after the upgrade.

Which three actions should you perform in sequence? (To answer, move the appropriate actions from the list of actions to the answer area and arrange them in the correct order.)

Select and Place:

Actions	Answer Area
Run the Windows 8 Setup Wizard.	
Start the portable computer from the bootable USB flash drive.	
Run the Windows 7 Upgrade Advisor.	
Create Windows 8 installation media by extracting the installation files to a bootable USB flash drive.	
Create Windows 8 installation media by copying the Windows 8 .iso image file to a bootable USB flash drive.	
Start the portable computer with the original operating system and then insert the bootable USB flash drive.	

Correct Answer:

Actions	Answer Area
	Create Windows 8 installation media by extracting the installation files to a bootable USB flash drive.
	Start the portable computer from the bootable USB flash drive.
Run the Windows 7 Upgrade Advisor.	
	Run the Windows 8 Setup Wizard.
Create Windows 8 installation media by copying the Windows 8 .iso image file to a bootable USB flash drive.	
Start the portable computer with the original operating system and then insert the bootable USB flash drive.	

QUESTION 11

A company has client computers that run Windows 8. The client computers are in a workgroup. Windows Remote Management (WinRM) is configured on all computers.

You need to configure a computer named COMPUTER1 to retrieve Windows event logs from all other computers in the workgroup.

Which three actions should you perform? (Each correct answer presents part of the solution. Choose three.)

- A. Add machine accounts of all other computers to the Event Log Readers local group on COMPUTER1.
- B. Create and configure a collector-initiated subscription.
- C. Start the Windows Event Collector service on all computers other than COMPUTER1.
- D. Start the Windows Event Collector service on COMPUTER1.
- E. Create and configure a source computer—initiated subscription.
- F. Start the Windows Event Log service on all computers other than COMPUTER1.
- G. Add COMPUTER1 machine account to the Event Log Readers local group on all other computers.

Correct Answer: BDG

For best management we want a collector-initiated subscription--meaning we'll be setting up the subscription at the collecting computer instead of at each individual computer. The Windows Event Collector service is requested for subscriptions to work on the computer doing the collecting.

The collecting computer must be a member of the Event Log Readers local group on all computer in order to be able to read the event log.

QUESTION 12

Ten client computers run Windows Vista and a custom application. The custom application is compatible with Windows 8.

You purchase 10 new computers that have Windows 8 pre-installed. You plan to migrate user settings and data from the Windows Vista computers to the Windows 8 computers.

You install the User State Migration Toolkit (USMT) on a USB flash drive.

You need to ensure that the custom application settings are applied to the Windows 8 computers after the migration is complete.

Which three actions should you perform in sequence? (To answer, move the appropriate actions from the list of actions to the answer area and arrange them in the correct order.)

Select and Place:

Uninstall the custom application from the Windows Vista computers.

Run the **scanstate** command on the Windows 8 computers.

Run the **loadstate** command on the Windows Vista computers.

Install the custom application on the Windows 8 computers.

Run the **scanstate** command on the Windows Vista computers.

Run the **loadstate** command on the Windows 8 computers.

Correct Answer:

Uninstall the custom application from the Windows Vista computers.

Run the **scanstate** command on the Windows 8 computers.

Run the **scanstate** command on the Windows Vista computers.

Run the **loadstate** command on the Windows Vista computers.

Install the custom application on the Windows 8 computers.

Run the **loadstate** command on the Windows 8 computers.

To Read the [Whole Q&As](#), please purchase the [Complete Version](#) from [Our website](#).

Try our product !

100% Guaranteed Success

100% Money Back Guarantee

365 Days Free Update

Instant Download After Purchase

24x7 Customer Support

Average **99.9%** Success Rate

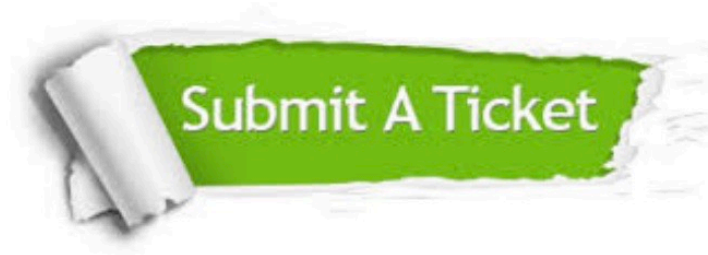
More than **800,000** Satisfied Customers Worldwide

Multi-Platform capabilities - **Windows, Mac, Android, iPhone, iPod, iPad, Kindle**

Need Help

Please provide as much detail as possible so we can best assist you.

To update a previously submitted ticket:



 <p>One Year Free Update Free update is available within One Year after your purchase. After One Year, you will get 50% discounts for updating. And we are proud to boast a 24/7 efficient Customer Support system via Email.</p>	 <p>Money Back Guarantee To ensure that you are spending on quality products, we provide 100% money back guarantee for 30 days from the date of purchase.</p>	 <p>Security & Privacy We respect customer privacy. We use McAfee's security service to provide you with utmost security for your personal information & peace of mind.</p>
---	---	--

Any charges made through this site will appear as Global Simulators Limited.

All trademarks are the property of their respective owners.