

100% Money Back
Guarantee

Vendor:Microsoft

Exam Code:70-742

Exam Name:Identity with Windows Server 2016

Version:Demo

QUESTION 1

Note: This question is part of a series of questions that present the same scenario. Each question in the series contains a unique solution that might meet the stated goals. Some question sets might have more than one correct solution, while

others might not have a correct solution.

After you answer a question in this section, you will NOT be able to return to it. As a result, these questions will not appear in the review screen.

Your network contains an Active Directory forest named contoso.com. The forest contains an Active Directory Rights Management Services (AD RMS) deployment.

Your company establishes a partnership with another company named Fabrikam, Inc. The network of Fabrikam contains an Active Directory forest named fabrikam.com and an AD RMS deployment.

You need to ensure that the users in contoso.com can access rights protected documents sent by the users in fabrikam.com.

Solution: From AD RMS in contoso.com, you configure fabrikam.com as a trusted user domain.

Does this meet the goal?

A. Yes

B. No

Correct Answer: B

Contoso would need to be the Trusted User Domain.

References: <https://books.google.co.za/books?id=gjR-BAAAQBAJandpg=PA397andlpg=PA397anddq=configure+a+partners+forest+as+a+trusted+publishing+domain+-+AD+RMSandsource=blandots=mohQXTyW9sandsig=NJ7oFHuLYOs72o9EMyQilscUW8andhl=enandsa=Xandved=0ahUKEwjuiW24sPbAhWGRMAKHQcEB6EQ6AEIOzAD#v=onepageandq=configure%20a%20partners%20forest%20as%20a%20trusted%20publishing%20domain%20-%20AD%20RMSandf=false>

QUESTION 2

Your network contains an Active Directory domain

Users do not have administrative privileges to their client computer.

You modify a computer setting in a Group Policy object (GPO).

You need to ensure that the setting is applied to five client computers as soon as possible.

What should you do?

A. From each client computer, run the gpresult.exe command and specify the /r parameter.

B. From a domain controller, run the gpupdate.exe command and specify the Force parameter.

C. From the domain controller, run the Invoke-GPUupdate cmdlet.

D. From each client, run the Get-Gpo cmdlet and specify the ?ll parameter.

Correct Answer: C

QUESTION 3

Note: This question is part of a series of questions that present the same scenario. Each question in the series contains a unique solution that might meet the stated goals. Some question sets might have more than one correct solution, while

others might not have a correct solution.

After you answer a question in this section, you will NOT be able to return to it. As a result, these questions will not appear in the review screen.

Your network contains an Active Directory domain named contoso.com. The domain contains two domain controllers named DC1 and DC2.

DC1 holds the RID master operations role. DC1 fails and cannot be repaired. You need to move the RID role to DC2.

Solution: On DC2, you open the command prompt, run ntdsutil.exe, connect to DC2, and use the Transfer RID master option.

Does this meet the goal?

A. Yes

B. No

Correct Answer: A

There are 2 ways of transferring FSMO roles. You can do that using graphical consoles available on a DC or any server/workstation with Administrative Tools / Remote Server Administration Tools installed or using command-line tool called

ntdsutil.

First of all you need to connect to Domain Controller to which you want to transfer FSMO roles. To do that you have to type:

```
ntdsutil: roles (enter)
```

```
fsmo maintenance: connections (enter)
```

```
server connections: connect to server (enter)
```

```
server connections: quit (enter)
```

```
fsmo maintenance:
```

Now you will be able to transfer FSMO roles to selected Domain Controller.

RID master

fsmo maintenance: transfer RID master (enter)

Click "Yes" button to move role.

References: <http://kpytko.pl/active-directory-domain-services/transferring-fsmo-roles-from-command-line/>

QUESTION 4

Your network contains an Active Directory forest named adatum.com.

A partner organization has an Active Directory forest named contoso.com.

Adatum.com contains an Active Directory Rights Management (AD RMS) cluster installed on a server named adat1.adatum.com.

Contoso.com contains an Active Directory Rights Management Services (AD RMS) cluster installed on a server named cont1.contoso.com.

You need to allow the AD RMS cluster in adatum.com to accept rights account certificates (RACs) from contoso.com.

What should you do?

- A. In contoso.com, import the trusted user domain file from adat1.adatum.com
- B. In adatum.com, import the trusted publishing domain file from adat1.adatum.com
- C. In contoso.com, import the trusted publishing domain file from cont1.contoso.com
- D. In adatum.com, import the trusted user domain file from cont1.contoso.com

Correct Answer: D

References: https://winintro.ru/rms_help.en/html/59c802d0-3982-432c-b06f-3e148dca0166.htm

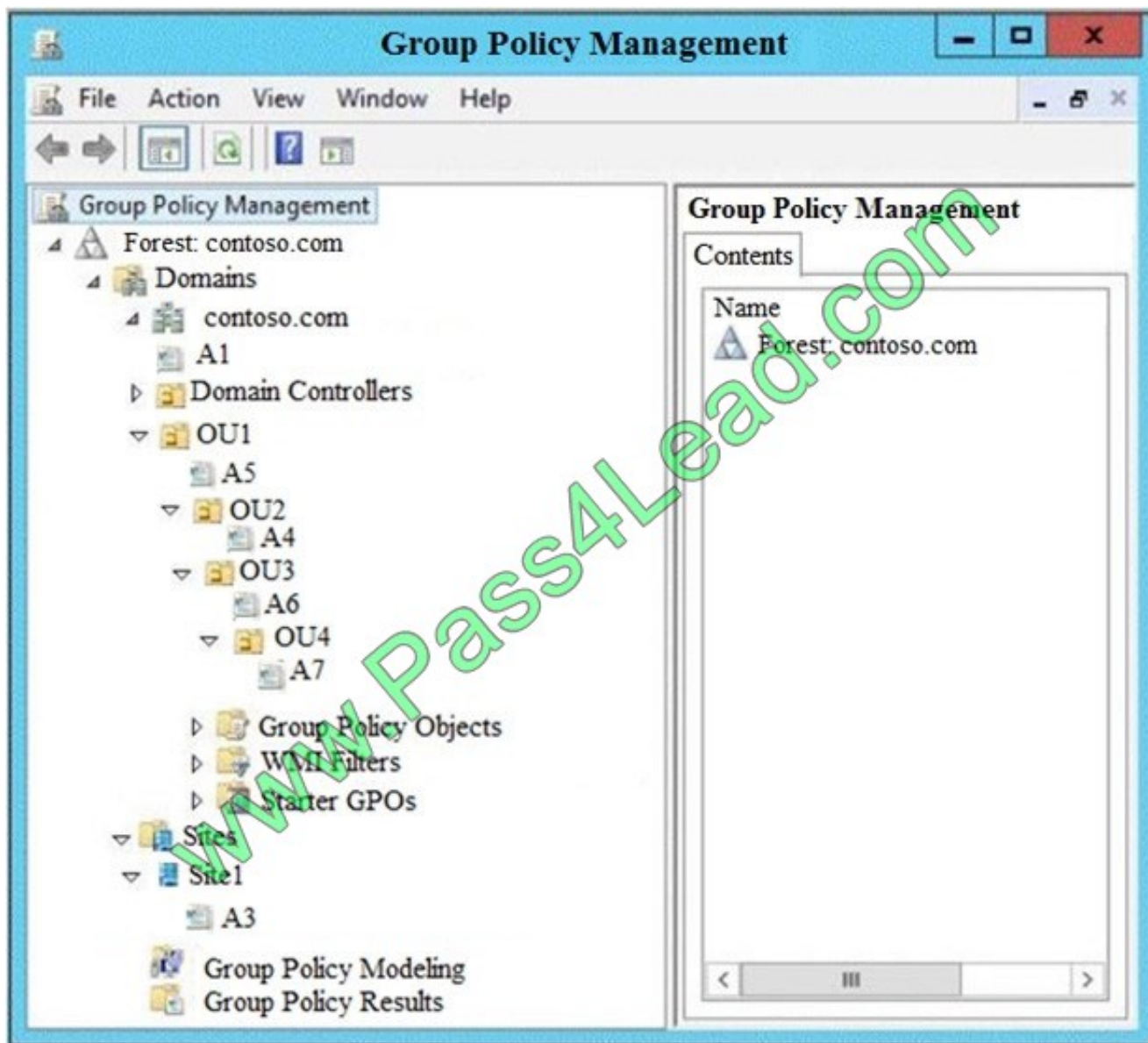
QUESTION 5

Note: This question is part of a series of questions that use the same scenario. For your convenience, the scenario is repeated in each question. Each question presents a different goal and answer choices, but the text of the scenario is exactly the same in each question in this series.

Start of repeated scenario.

Your network contains an Active Directory domain named contoso.com. The domain contains a single site named Site1. All computers are in Site1.

The Group Policy objects (GPOs) for the domain are configured as shown in the exhibit. (Click the Exhibit button.)



The relevant users and client computer in the domain are configured as shown in the following table.

| Object name | Object type | Object location |
|-------------|-------------|-----------------|
| Computer | Computer | OU4 |
| User1 | User | OU4 |
| User2 | User | OU2 |

End of repeated scenario.

You are evaluating what will occur when you set user Group Policy loopback processing mode to Replace in A4.

Which GPO or GPOs will apply to User2 when the user signs in to Computer1 after loopback processing is configured?

- A. A1, A5, A6 and A4
- B. A3, A1, A4, and A7
- C. A3, A1, A5 and A4
- D. A4 only

Correct Answer: D

QUESTION 6

Your network contains an Active Directory domain named contoso.com. The domain contains a server named Server1 that runs Windows Server 2016.

You install IP Address Management (IPAM) on Server1.

You select the automatic provisioning method, and then you specify a prefix of IPAM1.

You need to configure the environment for automatic IPAM provisioning.

Which cmdlet should you run? To answer, select the appropriate options in the answer area.

Hot Area:

Answer Area

| | | | |
|----------------------------|--------------------------|-----------------------|--------------------------|
| <input type="checkbox"/> | <input type="checkbox"/> | -Domain "Contoso.com" | <input type="checkbox"/> |
| Add-IPAMDiscoveryDomain | | | -AssetTag |
| Enable-IPAMCapability | | | -DiscoverDns |
| Invoke-IPAMGPOProvisioning | | | -GPOPrefixName |
| Set-IPAMConfiguration | | | -ProvisioningMethod |

Correct Answer:

Answer Area

| | | | |
|----------------------------|--------------------------|-----------------------|--------------------------|
| <input type="checkbox"/> | <input type="checkbox"/> | -Domain "Contoso.com" | <input type="checkbox"/> |
| Add-IPAMDiscoveryDomain | | | -AssetTag |
| Enable-IPAMCapability | | | -DiscoverDns |
| Invoke-IPAMGPOProvisioning | | | -GPOPrefixName |
| Set-IPAMConfiguration | | | -ProvisioningMethod |

QUESTION 7

Your network contains an Active Directory domain named contoso.com.

The domain contains a read-only domain controller (RODC) named RODC1.

You need to retrieve a list of accounts that have their password cached on RODC1.

Which command should you run?

- A. repadmin.exe
- B. ntdsutil.exe
- C. dcdiag.exe
- D. netdom.exe

Correct Answer: A

To list the user and computer accounts for the passwords that are cached on the RODC, run the following command:
repadmin /prp view reveal

References <https://support.microsoft.com/en-za/help/2028962/the-active-directory-users-and-computers-mmc-snap-in-does-not-list-all>

QUESTION 8

Your network contains an Active Directory domain named contoso.com. The domain contains two servers named Server1 and Server2 that run Windows Server 2016. The computer accounts of Server1 and Server2 are in the Computers container.

A Group Policy object (GPO) named GPO1 is linked to the domain. GPO1 has multiple computer settings defined and has following configurations.

| | |
|-------------------|--------------------------------------|
| DisplayName: | GPO1 |
| Domain Name: | Contoso.com |
| Owner: | CONTOSO\Domain Admins |
| Id: | bf3b4d96-59f6-4d0f-84c3-b9c37180b9ca |
| GpoStatus: | UserSettingsDisabled |
| Description: | |
| CreationTime: | 2/18/2017 7:11:30 AM |
| ModificationTime: | 2/18/2017 9:33:04 AM |
| UserVersion: | AD Version 18, SysVol Version: 18 |
| ComputerVersion: | AD Version 6, SysVol Version: 6 |
| WmiFilter: | WMI1 |

An administrator discovers that GPO1 is not applied to Server1. GPO1 is applied to Server2. Which configuration possibly prevents GPO1 from being applied to Server1?

- A. The permissions on the domain object of contoso.com
- B. The WMI filter settings
- C. The Enforced setting of GPO1
- D. The GpoStatus property
- E. The loopback processing mode in GPO1
- F. The permissions on the domain object of contoso.com

Correct Answer: B

References: <https://docs.microsoft.com/en-us/windows/security/threat-protection/windows-firewall/create-wmi-filters-for-the-gpo>

QUESTION 9

A technician named Tech1 is assigned the task of joining the laptops to the domain. The computer accounts of each laptop must be in an organizational unit (OU) that is associated to the department of the user who will use that laptop. The

laptop names must start with four characters indicating the department followed by a four-digit number.

Tech1 is a member of the Domain Users group only. Tech1 has the administrator logon credentials for all the laptops.

You need Tech1 to join the laptops to the domain. The solution must ensure that the laptops are named correctly, and that the computer accounts of the laptops are in the correct OUs.

Solution: You script the creation of files for an offline domain join, and then you give the files to Tech1.

You instruct Tech1 to sign in to each laptop, and then to run djoin.exe.

Does this meet the goal?

- A. Yes
- B. No

Correct Answer: B

QUESTION 10

DRAG DROP

Your network contains an Active Directory domain. The domain contains two domain controllers named DC1 and DC2. DC2 is a virtual machine that is hosted on a Hyper-V host named HyperV1. DC1 holds the PDC emulator operations

master role.

You need to create a new domain controller named DC3 by using domain controller cloning.

Which five actions should you perform in sequence before you can import the cloned virtual machine? To answer, move the appropriate actions from the list of actions to the answer area and arrange them in the correct order.

NOTE: More than one order of answer choices is correct. You will receive credit for any of the correct orders you select.

Select and Place:

| Actions | Answer Area |
|--|-------------|
| Run the Get-ADDCCloningExcludedApplicationList cmdlet | |
| Modify the group membership of DC2 | |
| Export DC2 | |
| Run the New-ADDCCloneConfigFile cmdlet | |
| Modify the group membership of DC3 | |
| Stop DC2 | |

Correct Answer:

| Actions | Answer Area |
|------------------------------------|--|
| | Modify the group membership of DC2 |
| | Run the Get-ADDCCloningExcludedApplicationList cmdlet |
| | Run the New-ADDCCloneConfigFile cmdlet |
| | Stop DC2 |
| Modify the group membership of DC3 | Export DC2 |
| | |

References: <https://blogs.technet.microsoft.com/askpfplat/2012/10/01/virtual-domain-controller-cloning-in-windows-server-2012/>

QUESTION 11

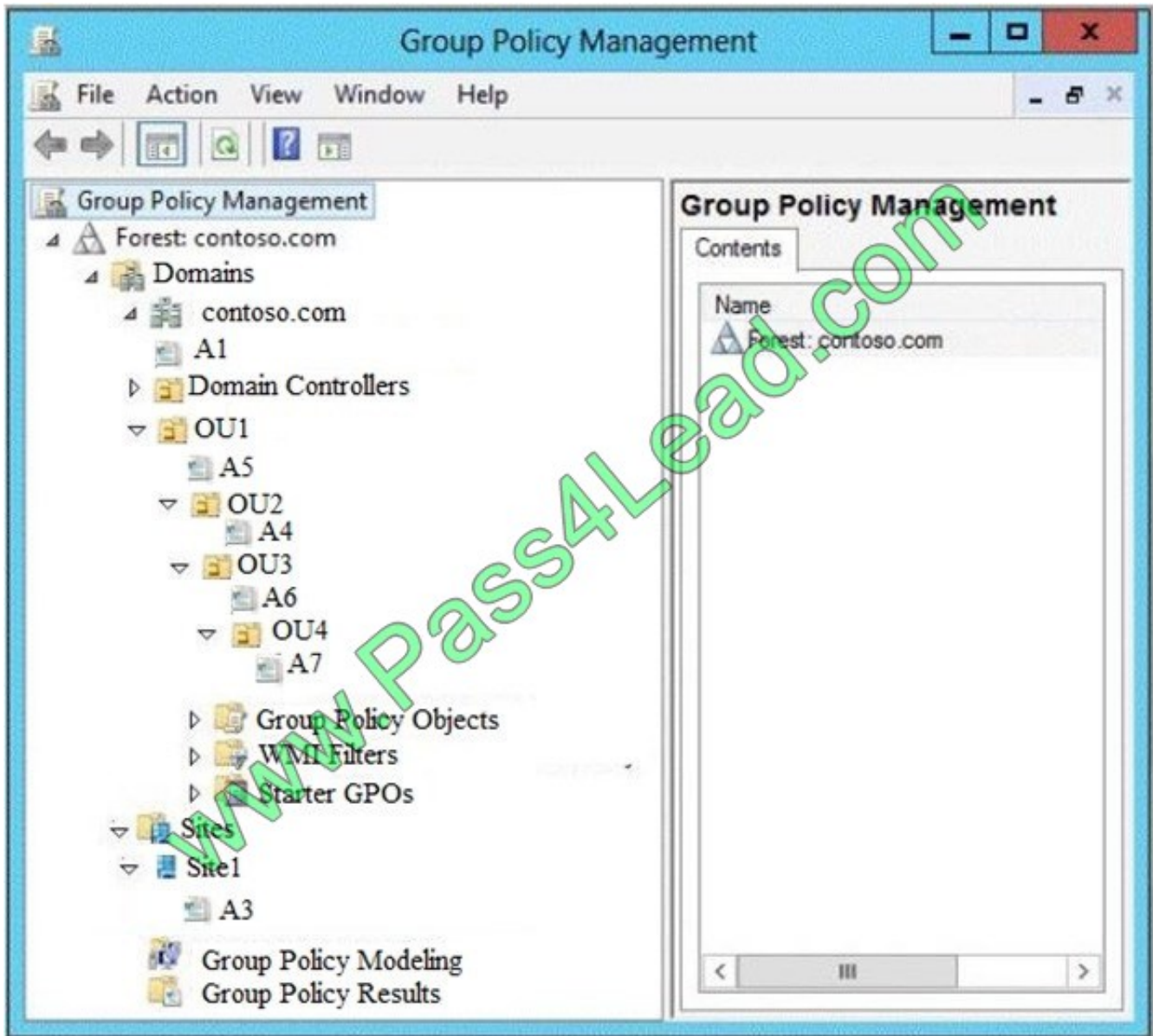
Note: This question is part of a series of questions that use the same scenario. For your convenience, the scenario is

repeated in each question. Each question presents a different goal and answer choices, but the text of the scenario is exactly the same in each question in this series.

Start of repeated scenario.

Your network contains an Active Directory domain named contoso.com. The domain contains a single site named Site1. All computers are in Site1.

The Group Policy objects (GPOs) for the domain are configured as shown in the exhibit. (Click the Exhibit button.)



The relevant users and client computer in the domain are configured as shown in the following table.

| Object name | Object type | Object location |
|-------------|-------------|-----------------|
| Computer | Computer | OU4 |
| User1 | User | OU4 |
| User2 | User | OU2 |

End of repeated scenario.

You are evaluating what will occur when you set user Group Policy loopback processing mode to Replace in A7.

Which GPO or GPOs will apply to User2 when the user signs in to Computer1 after loopback processing is configured?

- A. A1 and A7 only
- B. A3, A1, A5, A6 and A7
- C. A3, A5, A1, and A7 only
- D. A7 only

Correct Answer: D

In Replace Mode, the user's list of GPOs is not gathered. Only the list of GPOs based on the computer object is used.
References: <https://support.microsoft.com/en-us/help/231287/loopback-processing-of-group-policy>

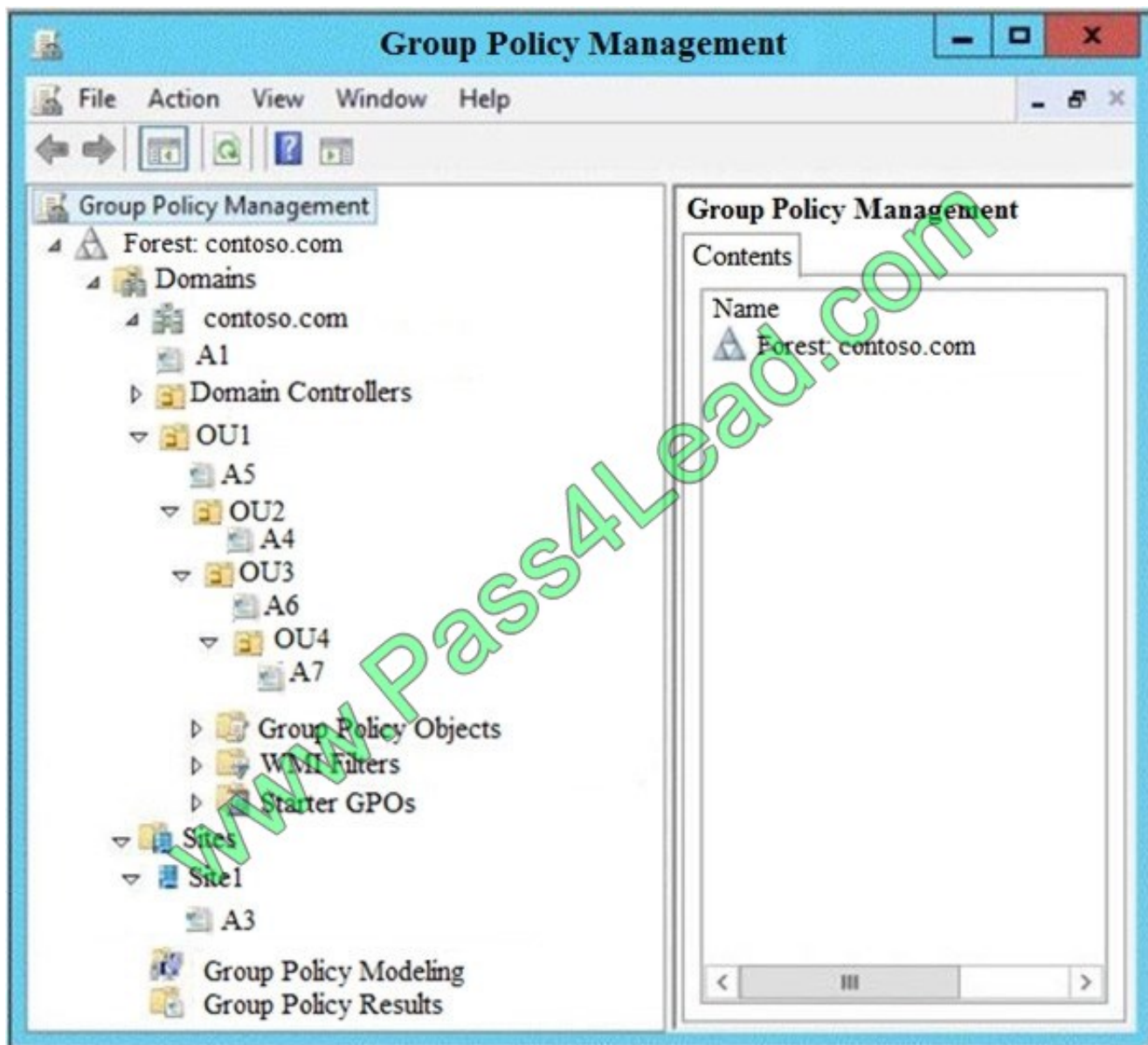
QUESTION 12

Note: This question is part of a series of questions that use the same scenario. For your convenience, the scenario is repeated in each question. Each question presents a different goal and answer choices, but the text of the scenario is exactly the same in each question in this series.

Start of repeated scenario.

Your network contains an Active Directory domain named contoso.com. The domain contains a single site named Site1. All computers are in Site1.

The Group Policy objects (GPOs) for the domain are configured as shown in the exhibit. (Click the Exhibit button.)



The relevant users and client computer in the domain are configured as shown in the following table.

| Object name | Object type | Object location |
|-------------|-------------|-----------------|
| Computer | Computer | OU4 |
| User1 | User | OU4 |
| User2 | User | OU2 |

End of repeated scenario.

You are evaluating what will occur when you block inheritance on OU4.

Which GPO or GPOs will apply to User1 when the user signs in to Computer1 after block inheritance is configured?

- A. A1, A5, and A6
- B. A3, A1, A5, and A7
- C. A3 and A7 only
- D. A7 only

Correct Answer: D

To Read the [Whole Q&As](#), please purchase the [Complete Version](#) from [Our website](#).

Try our product !

100% Guaranteed Success

100% Money Back Guarantee

365 Days Free Update

Instant Download After Purchase

24x7 Customer Support

Average **99.9%** Success Rate

More than **800,000** Satisfied Customers Worldwide

Multi-Platform capabilities - **Windows, Mac, Android, iPhone, iPod, iPad, Kindle**

Need Help

Please provide as much detail as possible so we can best assist you.

To update a previously submitted ticket:



| | | |
|---|---|--|
|  <p>One Year Free Update Free update is available within One Year after your purchase. After One Year, you will get 50% discounts for updating. And we are proud to boast a 24/7 efficient Customer Support system via Email.</p> |  <p>Money Back Guarantee To ensure that you are spending on quality products, we provide 100% money back guarantee for 30 days from the date of purchase.</p> |  <p>Security & Privacy We respect customer privacy. We use McAfee's security service to provide you with utmost security for your personal information & peace of mind.</p> |
|---|---|--|

Any charges made through this site will appear as Global Simulators Limited.

All trademarks are the property of their respective owners.