

Exam : **A00-204**

Title : SAS warehouse architect
concepts

Version : DEMO

1. According to the SAS Rapid Warehousing Methodology, which of the following are valid outputs from the Requirements Phase? I.project plan II.cost/benefit analysis III.logical and physical models IV.metadata exploitation, population, and update process

A. I and II only

B. I, II, and III only

C. I, II, and IV only

D. I, II, III, and IV

Answer: A

2. Which of the following provides read access control to a SAS dataset?

A. Racf and RSA

B. LDAP and Racf

C. Roscoe and RSA

D. Panvelet and Roscoe

Answer: B

3. The performance scalability of SAS full table scans is being estimated. Which of the following metrics is appropriate for direct attached storage?

A. I/O per second

B. I/O latency per request

C. I/O request average size

D. I/O in megabytes per second

Answer: D

4. Usage success criteria have been defined for a data warehouse project. Which of the following metrics supports these criteria?

A. number of queries in a given time period

B. performance against a pre-warehouse baseline

C. number of gigabytes of data stored in the warehouse

D. amount of time between the close of business and warehouse refresh

Answer: A

5. A data warehouse uses a relational database management system (RDBMS) for its core data repository. Bulk loading has been proposed as the method for loading larger RDBMS tables into the warehouse. Which of the following must be considered when developing the bulk load routines?

I.indexes II.join efficiency III.integrity constraints IV.representation of null values

A. I and II only

B. III and IV only

C. I, II, and III only

D. I, III, and IV only

Answer: D

6. Which of the following factors must be considered when designing an efficient client-server ad hoc query system?

A. output appearance

B. user access privileges

C. graphical user interface

D. number of rows in the result set

Answer: D

7. During warehouse process and architecture planning, which of the following are required inputs for an effective gap analysis of the operational source systems? I.detailed logical models II.locations of source data III.detailed physical models IV.business requirements document

A. I and III only

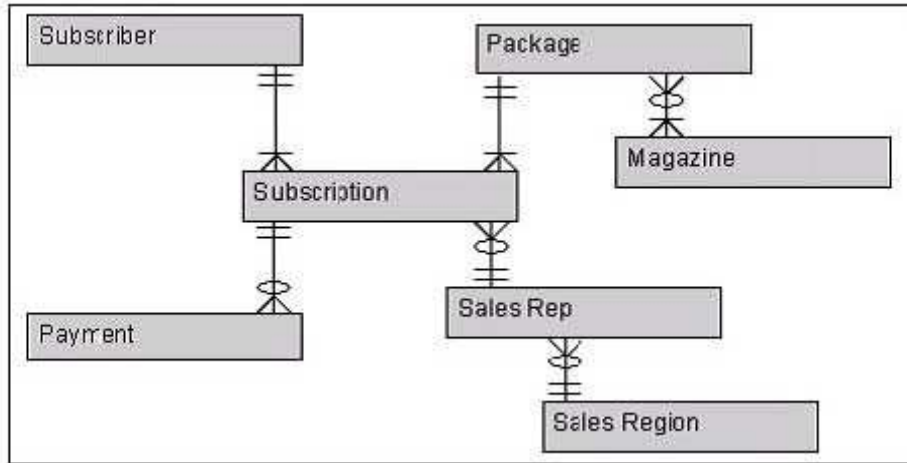
B. III and IV only

C. I, II, and IV only

D. I, III, and IV only

Answer: D

8. A diagram of a logical entity-relationship model of a magazine subscription company is shown below:



Which of the following statements about this model is true?

- A. Every sales region has several sales reps.
- B. A package may be related to several subscriptions.
- C. All magazines are included in at least one package.
- D. A subscription may be related to several subscribers.

Answer: B

9. A medical insurance company has developed a data warehouse containing confidential data about its customers. Power users require OLAP functionality with reach-through to the detail data. Which of the following supports the users' requirements while protecting customer privacy?

- A. providing only aggregated statistics
- B. securing the data within the OLAP application
- C. securing sensitive data within the detail schema
- D. suppressing personal details from summarized reports

Answer: C

10. A SAS reporting application is used by 100 users within a company. The user base is equally divided between power, intermediate, and novice users. All users are currently sharing the same temporary space when executing queries to produce reports. Examination of the user logs indicates I/O contention when using the temporary space.

Which of the following would improve I/O performance?

- A. prioritizing execution of all jobs by user level

B. assigning all 100 users their individual temporary space

C. forcing all users to execute queries using permanent space

D. using logical partitioning of the temporary space by user group

Answer: B

Trying our product !




- ★ **100%** Guaranteed Success
- ★ **100%** Money Back Guarantee
- ★ **365 Days** Free Update
- ★ **Instant Download** After Purchase
- ★ **24x7** Customer Support
- ★ Average **99.9%** Success Rate
- ★ More than **69,000** Satisfied Customers Worldwide
- ★ Multi-Platform capabilities - **Windows, Mac, Android, iPhone, iPod, iPad, Kindle**

Need Help

Please provide as much detail as possible so we can best assist you.

To update a previously submitted ticket:



 One Year Free Update <p>Free update is available within One Year after your purchase. After One Year, you will get 50% discounts for updating. And we are proud to boast a 24/7 efficient Customer Support system via Email.</p>	 Money Back Guarantee <p>To ensure that you are spending on quality products, we provide 100% money back guarantee for 30 days from the date of purchase.</p>	 Security & Privacy <p>We respect customer privacy. We use McAfee's security service to provide you with utmost security for your personal information & peace of mind.</p>
---	---	--

Guarantee & Policy | Privacy & Policy | Terms & Conditions

Any charges made through this site will appear as Global Simulators Limited.

All trademarks are the property of their respective owners.

Copyright © 2004-2014, All Rights Reserved.