

100% Money Back
Guarantee

Vendor:Dell

Exam Code:DES-1241

Exam Name:Specialist - Platform Engineer,
PowerStore

Version:Demo

QUESTION 1

What describes Dell EMC PowerStore heat dissipation?

- A. X systems have higher heat dissipation specifics than T systems
- B. Higher model numbered systems have lower heat dissipation specifications than lower model numbered systems
- C. T systems have higher heat dissipation specifics than X systems
- D. Lower model numbered systems have lower heat dissipation specifications than higher model numbered systems

Correct Answer: A

QUESTION 2

What is achieved when the Rapid Spanning Tree Protocol (RSTP) is enabled on a Dell EMC PowerStore network configuration?

- A. Redundant connectivity between data switches
- B. Communication between data switches and management switch on PowerStore T
- C. Management between appliance and vCenter on PowerStore X
- D. Fault tolerance between appliances in a PowerStore cluster

Correct Answer: C

QUESTION 3

Which component is only replaceable by qualified personnel?

- A. Battery backup unit
- B. Embedded I/O module
- C. Memory module
- D. 4-Port mezzanine card

Correct Answer: C

QUESTION 4

DRAG DROP

When connecting a PowerStore base enclosure to 2 expansion enclosures, match the base SAS ports in column A to their corresponding expansion LCC ports in column B.

Select and Place:

Base SAS Ports	Expansion LCC Ports
Node B SAS B	Exp 1 LCC A port A
Node A SAS A	Exp 2 LCC B port B
Node A SAS B	Exp 1 LCC B port A
Node B SAS A	Exp 2 LCC A port B

Correct Answer:

Base SAS Ports	Expansion LCC Ports
	Node A SAS B
	Node A SAS A
	Node B SAS B
	Node B SAS A

Reference: <https://www.dell.com/support/manuals/pk/en/pkbsd1/powerstore-1000/pwrstr-isg/cable-the-base-enclosure-to-the-expansion-enclosure?guid=guid-d68d049f-2b77-489f-b1ab-553f4f3de8aa&lang=en-us>

QUESTION 5

What are the recommended number of network switches in a Dell EMC PowerStore T environment?

- A. 1
- B. 2
- C. 3
- D. 4

Correct Answer: A

Reference: <https://www.dell.com/support/manuals/pk/en/pkbsd1/powerstore-9000t/pwrstr-ntwk-plang/powerstore-t-model-appliance-networks?guid=guid-97a3e988-c1bc-4f51-a445-3af23f19da1bandlang=en-us>

QUESTION 6

What safety equipment is critical to have on hand to avoid equipment failure before replacing any components in a Dell EMC PowerStore array?

- A. Maintenance Kit
- B. ESD Kit
- C. Stabilization Kit
- D. Rail Kit

Correct Answer: B

Reference: <https://www.dell.com/support/manuals/en-pk/powerstore-9000t/pwrstr-isg/avoiding-electrostatic-discharge-esd-damage?guid=guid-d94c9c2a-3c04-4951-a8ab-87ba992cc6f6andlang=en-us>

QUESTION 7

How is a defective DIMM displayed in Dell EMC PowerStore Manager?

- A. Orange with an empty state
- B. Blue with a faulted state
- C. Orange with a faulted state
- D. Blue with an empty state

Correct Answer: C

QUESTION 8

For what is the "svc_container_mgmt status CP" command used?

- A. Clears the Control Path audit log

- B. Resets the Data Path root access
- C. Checks the status of the Control Path
- D. Checks the status of the Data Path

Correct Answer: C

Reference: <http://webcache.googleusercontent.com/search?q=cache:ZhvW4-xt2TEJ:dunmer.net/guides/powerstore-implementation/PowerStore%252BBasic%252BTroubleshooting%252BExternal%252B-%252BParticipant%252BGuide.pdf+andcd=3andhl=enandct=clnandgl=pkandclient=ubuntu>

QUESTION 9

What method is used to power down a Dell EMC PowerStore system in a true emergency situation?

- A. Run `svc_node shutdown`
- B. Power Down Cluster in PowerStore GUI
- C. Turn off the cabinet switches
- D. Remove base enclosure power cables

Correct Answer: C

Reference: <https://www.dell.com/support/manuals/pk/en/pkbsd1/powerstore-1000/pwrstr-isg/power-control-procedure-considerations?guid=guid-4352c94e-0ae7-4a2e-8593-9ae135bb9e34andlang=en-us>

QUESTION 10

Refer to the exhibit.



What is indicated when the circled LED on an expansion enclosure is illuminated amber?

- A. Expansion enclosure faulted
- B. SAS bus link up
- C. SAS bus link down
- D. Expansion enclosure power-on

Correct Answer: A

Expansion enclosure fault LED (amber)

Reference: <https://www.dell.com/support/kbdoc/en-pk/000125739/powerstore-understanding-led-colors-and-states-for-troubleshooting>

QUESTION 11

When planning for a Dell EMC PowerStore X implementation, how many IP addresses are required for the storage network?

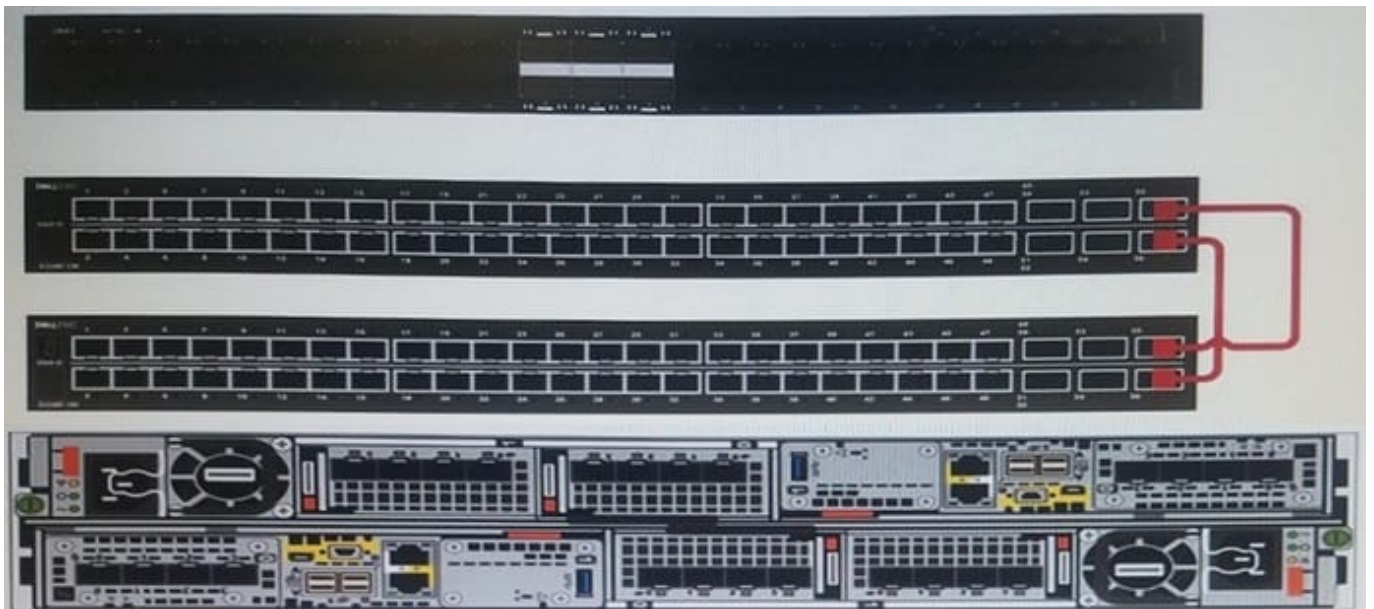
- A. 7
- B. 4
- C. 3
- D. 6

Correct Answer: D

At a minimum, you need 6 IP addresses for each PowerStore X model appliance.

Reference: <https://www.dell.com/support/manuals/en-pk/powerstore-5000/pwrstrx-ntwkg/initial-configuration-worksheet?guid=guid-49399fa5-d7d3-4ac4-8874-bbd02756a181&lang=en-us>

QUESTION 12



Refer to the exhibit.

What type of cable is used for the ToR switch configuration shown for the S5248F-ON switches?

- A. 10 GigE Cat 6 Ethernet RJ-45

B. 25 GigE Twinax

C. 100 GigE QSFP28

D. 10 GigE SFP optical cable

Correct Answer: C

Reference: <https://www.dell.com/technologies/en-us/asset/technical-guides-support-information/solutions/h18242-ready-stack-powerstore-dg.pdf?dgc=SMandcid=170850andlid=spr3492306896andlinkId=93885839>