

100% Money Back
Guarantee

Vendor:EMC

Exam Code:DES-4122

Exam Name:Specialist - Implementation Engineer
PowerEdge Version 2.0

Version:Demo

QUESTION 1

What is the purpose of the Silicon-Based Hardware Root of Trust feature in Dell EMC PowerEdge 14G servers?

- A. Ensures that the installed operating system is authentic
- B. Ensures that the server has a valid Service Tag number
- C. Ensures that no unauthorized BIOS or firmware codes are run
- D. Ensures that the server boots only when connected to a verified network

Correct Answer: C

QUESTION 2

A technician needs to change the iDRAC password on a Dell EMC PowerEdge 14G server in a lights-out datacenter. The be rebooted because it is in production. The iDRAC is configured with the default credentials How could the technician change the iDRAC password?

- A. SupportAssist Enterprise
- B. iDRAC Web GUI
- C. OpenManage Server Administrator
- D. Virtual Console; press F2 after rebooting system

Correct Answer: A

QUESTION 3

DRAG DROP

Match each RAID level to its characteristic.

Select and Place:

Level	Characteristic
RAID 10	Highest disk overhead
RAID 5	Failure of one drive affects overall performance
RAID 6	Requires minimum of four drives
RAID 1	Used for high performance databases

Correct Answer:

Level	Characteristic
	RAID 10
	RAID 6
	RAID 1
	RAID 5

QUESTION 4

What are the default settings used when applying firmware and a configuration to a replaced part using the Lifecycle Controller?

- A. Firmware: Upgrade to latest available version Configuration Apply always
- B. Firmware Allow version upgrade only Configuration: Disabled
- C. Firmware: Match firmware of replaced part Configuration Apply always
- D. Firmware Disabled Configuration Apply only if firmware match

Correct Answer: C

QUESTION 5

What is required for iDRAC Direct 2.0 to connect with iDRAC9 interfaces such as RACADM and WSMAN?

- A. Wi-Fi connection
- B. NFC connection
- C. Ethernet cable
- D. Micro-AB USB

Correct Answer: D

QUESTION 6

You are creating a new RAID 5 storage pool on a Dell EMC PowerEdge server based on 30 x 1TB drives Which PERC model best supports this configuration?

- A. S140
- B. H740P
- C. H740T
- D. H330

Correct Answer: A

QUESTION 7

What is a key distinction between iDRAC8 and iDRAC9?

- A. iDRAC9 offers HTML5 based GUI
- B. iDRAC9 default credentials are root/calvin orderable only
- C. iDRAC8 offers HTML5 based GUI
- D. iDRAC8 default credentials are customer orderable

Correct Answer: C

QUESTION 8

A technician working with a Dell EMC PowerEdge 1 take corrective action?

- A. Check the System Event Log Check PSU LED Reseat the PSU
- B. Check the System Event Log Check PSU LED Do a virtual reset of the iDRAC
- C. Check the LCC Log Check PSU LED Reseat the CPU

D. Check the LCC Log Check PSU LED Reseat the PSU

Correct Answer: B

QUESTION 9

What is a requirement to operate GPUs in a Dell EMC PowerEdge R740 server?

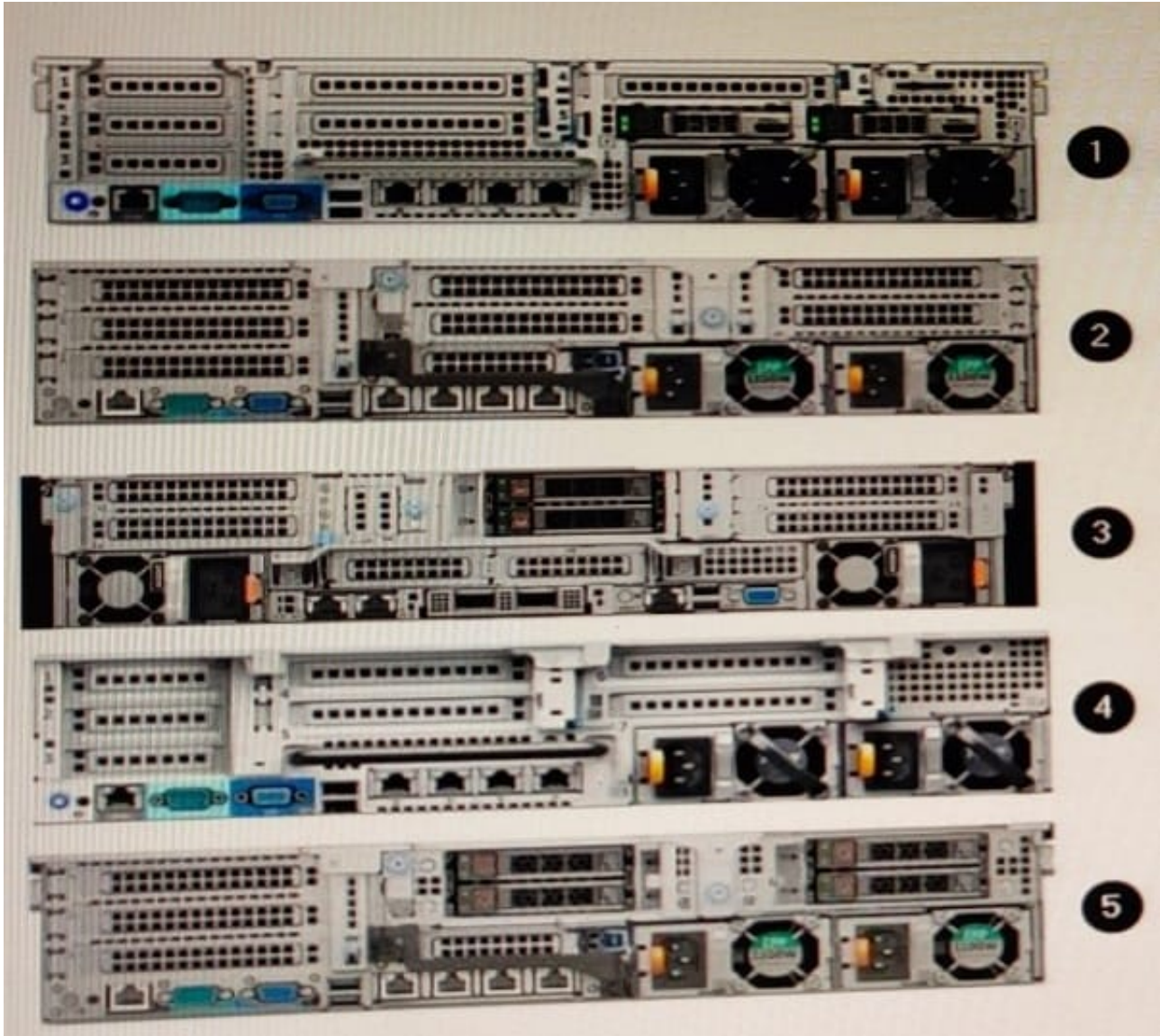
- A. All GPU cards must be installed at the same time
- B. All GPU cards must be of the same type but can be a different model
- C. All GPU cards must be of the same type and model
- D. All GPU cards must be installed on the same riser card.

Correct Answer: A

QUESTION 10

DRAG DROP

Refer to the exhibit.



Match each callout to the Dell EMC PowerEdge server model shown.

Select and Place:

Callout	Model
3	R730xd
5	R740
1	R7525
4	R730
2	R740xd

Correct Answer:

Callout	Model
	4
	5
	3
	1
	2

QUESTION 11

A Dell EMC PowerEdge server has been updated with an LCC and iDRAC DUP to the latest firmware when performing a firmware rollback?

- A. Both the iDRAC and the LCC can be rolled back
- B. The LCC can be rolled back; the iDRAC cannot be rolled back
- C. The iDRAC can be rolled back; the LCC cannot be rolled back
- D. The iDRAC cannot be rolled back and the LCC cannot be rolled back

Correct Answer: B

QUESTION 12

DRAG DROP

Match each status LED indicator on the Dell EMC 14G PowerEdge server with its corresponding condition.

Select and Place:

Indicator	Condition
Memory	Error related to the RAID array
Temperature	Failed power supply
Drive	System cover is removed
PCIe	Memory error
Electrical	Required drivers for the PCIe card

Correct Answer:

Indicator	Condition
	Drive
	Electrical
	Temperature
	Memory
	PCIe