

100% Money Back
Guarantee

Vendor:EMC

Exam Code:E20-616

Exam Name:Symmetrix Installation and
Troubleshooting Specialist

Version:Demo

QUESTION 1

A CE is currently installing a VMAX 40K. Where should the light panel cables of the System Bay be connected?

- A. Engine 4
- B. 1st AC slot
- C. Engine 5
- D. 2nd AC slot

Correct Answer: A

QUESTION 2

Which action needs to be taken if the Backend Cabling Verification fails after a Data Center relocation?

- A. Contact PSE Lab for assistance.
- B. Relocate the cables shown as faulted.
- C. Replace the cables shown as faulted.
- D. Power down and re-start the Backend Cabling Verification script.

Correct Answer: A

QUESTION 3

You are replacing Symmetrix FRUs.

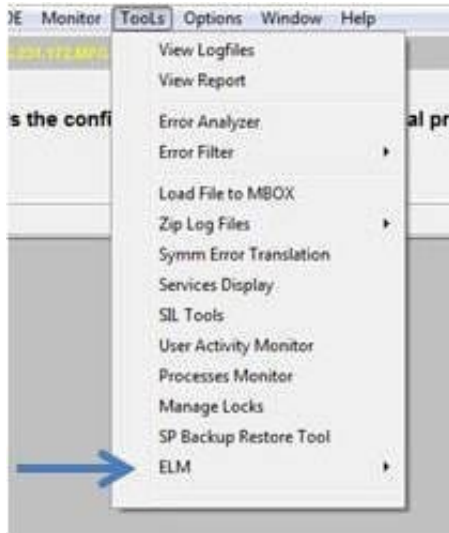
Which tool/ procedure must be followed before carrying out this activity?

- A. ESD
- B. Alum-a-lift
- C. ESRS
- D. ELM

Correct Answer: A

QUESTION 4

Refer to the exhibit.



For what is the ELM tool used?

- A. Manage Symmetrix Licenses
- B. Environmental LCC Management
- C. ELM scheduler task
- D. Create Environmental scripts

Correct Answer: A

QUESTION 5

What is the power level required for VMAX 20K Standard Storage Bay?

- A. 5.3 kVA
- B. 2.5 kVA
- C. 4.9 kVA
- D. 3.5 kVA

Correct Answer: A

QUESTION 6

What is the maximum DAE count for Engine 1 of a VMAX 10K (987) dense configuration?

- B. 16
- C. 18
- D. 10

Correct Answer: A

QUESTION 7

SPS 2A in Storage Bay 1A has a life of 300 seconds. How many power failures can it withstand?

- A. 1
- B. 2
- C. 5
- D. 4

Correct Answer: A

QUESTION 8

Refer to the exhibit.

Management Module connections



You have a Management Module installed in the lowest Symmetrix VMAX 40K Engine number in system bay 2. In

which position is the service processor cable installed?

- A. 4
- B. 5
- C. 6
- D. 7

Correct Answer: B

QUESTION 9

A SIB replacement is required on VMAX. The customer asks what the impact will be on the front-end ports. What should your response be?

- A. VMAX 40K all front-end ports will remain online. VMAX 20K, VMAX 10K front-end ports will go offline
- B. VMAX 40K, VMAX 20K all front-end ports will remain online. VMAX 10K front-end ports will go offline
- C. VMAX 40K, VMAX 20K and VMAX 10K all front-end ports will remain online
- D. VMAX 40K, VMAX 20K and VMAX 10K front-end ports will go offline

Correct Answer: A

QUESTION 10

Where in SymmWin can the Secure Erase feature be enabled or disabled?

- A. IMPL Init
- B. Feature Registration
- C. Edit Directors
- D. IMPL Browser

Correct Answer: A

QUESTION 11

A customer using a VMAX 20K containing 2 standard storage bays, each containing 90 drives wants to expand their capacity to 120 drives. What is the least expensive way to expand the existing configuration, but still a good choice for optimal performance in this configuration?

- A. Add four DAEs to each storage bay, each containing 15 drives
- B. Add eight DAEs to the first storage bay, each containing 15 drives

- C. Add two storage bays, one to each loop and each bay containing four DAEs with 15 drives each
- D. Add one storage bay containing eight DAEs with 15 drives each to the first loop

Correct Answer: A

QUESTION 12

What is a characteristic of VMAX 40K Power Vault Hypers (PVDs)?

- A. PVDs are 9 GB in size.
- B. There are two PVDs per physical disk drive.
- C. Space is allocated for PVDs in Global Memory.
- D. PVDs are 5 GB in size.

Correct Answer: A