

100% Money Back
Guarantee

Vendor:EMC

Exam Code:E20-690

Exam Name:VNX Solutions Specialist Exam for
Platform Engineers

Version:Demo

QUESTION 1

A customer requests information about where to find the installation procedures for an enterprise class VNX Unified system. How should you respond?

- A. The procedure is generated from the VNX Procedure Generator available in the customer view from Powerlink.
- B. An enterprise class VNX Unified system is not customer installable and a customer-specific installation procedure is not available.
- C. The procedure is generated from the VNX Procedure Generator available from the Powerlink EMC Services Partner Web.
- D. The procedure for installing VNX systems is contained within the VNX Installation Assistant software.

Correct Answer: A

QUESTION 2

After installation of a VNX Block system, you are tasked with completing the installation of the ESRS IP monitoring system.

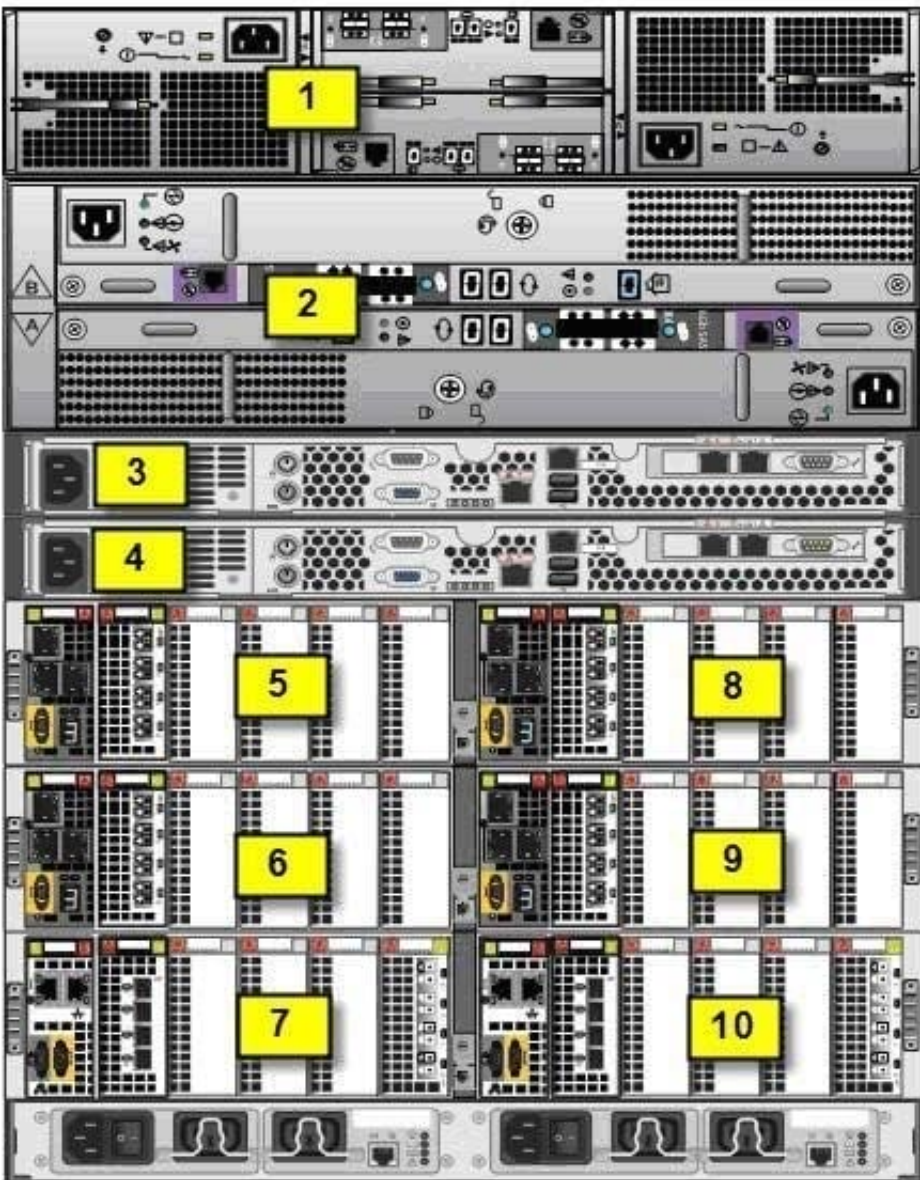
Which component must have its RemotelyAnywhere filter table updated?

- A. Storage processor
- B. Link control card
- C. Control Station
- D. ESRS server

Correct Answer: A

QUESTION 3

Refer to the exhibit.



Which component is located in location 3?

- A. CS 1
- B. CS 0
- C. DAE 0
- D. DAE 1

Correct Answer: A

QUESTION 4

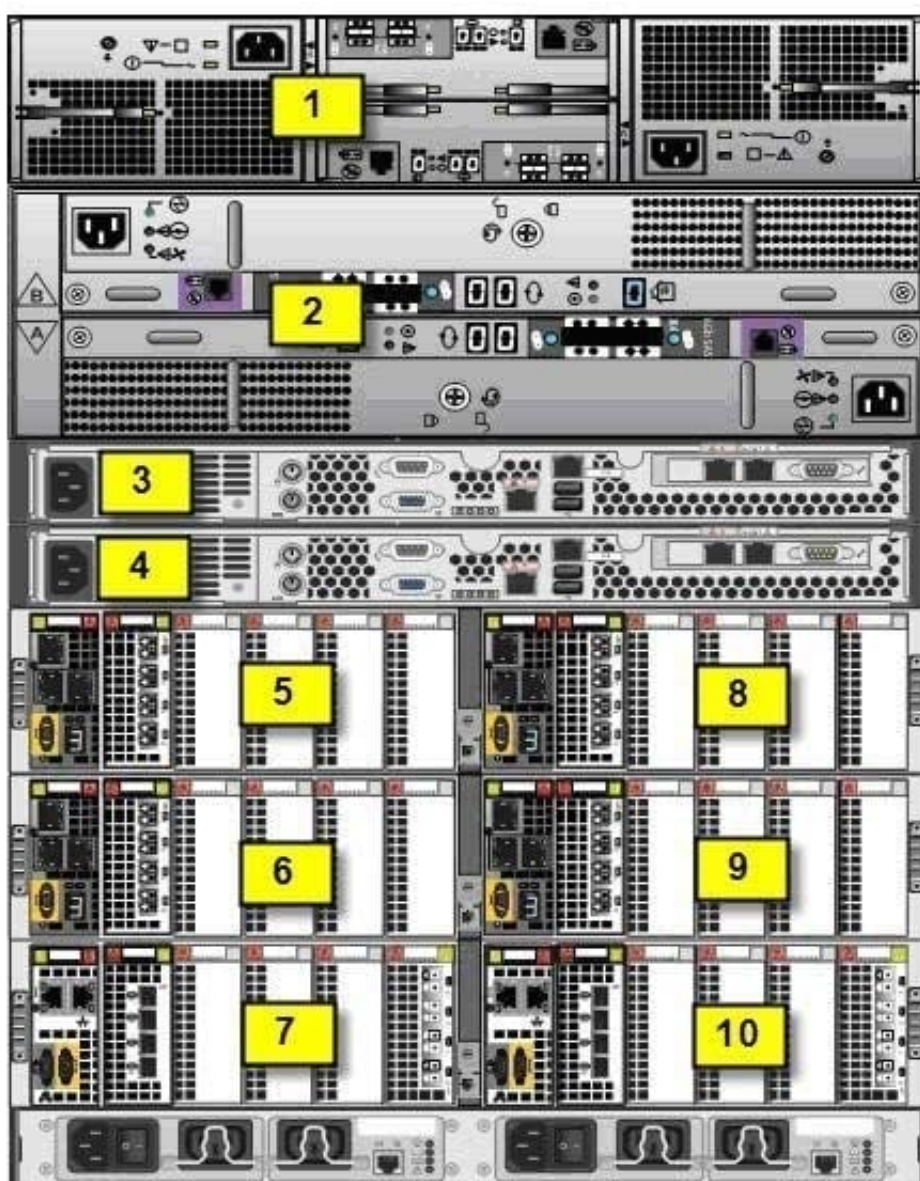
You are working on a VNX Block system that has a fault LED illuminated on a DAE. What action would you take to further analyze the system status?

- A. Launch USM and perform a Verify Storage System operation.
- B. Install VNX Analyzer to capture the DAE hardware status.
- C. Perform a background verify operation on the system's LUNs.
- D. Trespass the system's LUNs to the peer storage processor.

Correct Answer: A

QUESTION 5

Refer to the exhibit.



Where is DM 3 located?

- A. Location 6
- B. Location 5
- C. Location 7
- D. Location 10

Correct Answer: A

QUESTION 6

You are on a customer site to perform a software upgrade on a VNX Unified storage system. You have worked with the customer to install USM on the system that has IP connectivity to the VNX system and the Internet. What is the behavior of the Download Software Updates Wizard in USM?

- A. It advises the user of the current versions of software on the system and then requires the user to navigate to Powerlink for the downloads of the appropriate software upgrade versions.
- B. The user must manually look for the current versions of software on the system and then must manually navigate to Powerlink for the downloads of the appropriate software upgrade versions.
- C. It advises the user of the current versions of software on the system and then connects the user to Powerlink for the downloads of the appropriate software upgrade versions.
- D. The user must manually look for the current versions of software on the system and then the wizard connects the user to Powerlink for the downloads of the appropriate software upgrade versions.

Correct Answer: C

QUESTION 7

You are examining several log files on a VNX Control Workstation investigating a fault. Which command can be used to view the contents of a log file while on the CS console?

- A. `$ more logfile.log`
- B. `$ file logfile.log`
- C. `$ echo logfile.log`
- D. `$ dmesg logfile.log`

Correct Answer: A

QUESTION 8

You are installing multiple VNX arrays, and find that the different arrays share the same serial number. What will be the result?

- A. Unisphere may exhibit unpredictable behavior.

- B. Unisphere can still manage each VNX.
- C. The SP Cache of the conflicting VNXs will be disabled.
- D. Unisphere will fail to discover the arrays.

Correct Answer: A

QUESTION 9

How would you connect to an SP in a degraded state to retrieve SPCollects?

- A. RemotelyAnywhere
- B. Unisphere
- C. HyperTerminal or PuTTY
- D. Unisphere Client

Correct Answer: A

QUESTION 10

What should be installed/upgraded to get an updated version of the Pre-Upgrade Health Check (upgrd-ck) script?

- A. SolVe Desktop tool
- B. VNX Installation Toolbox
- C. Unisphere Service Manager
- D. Unisphere Initialization Utility

Correct Answer: A

QUESTION 11

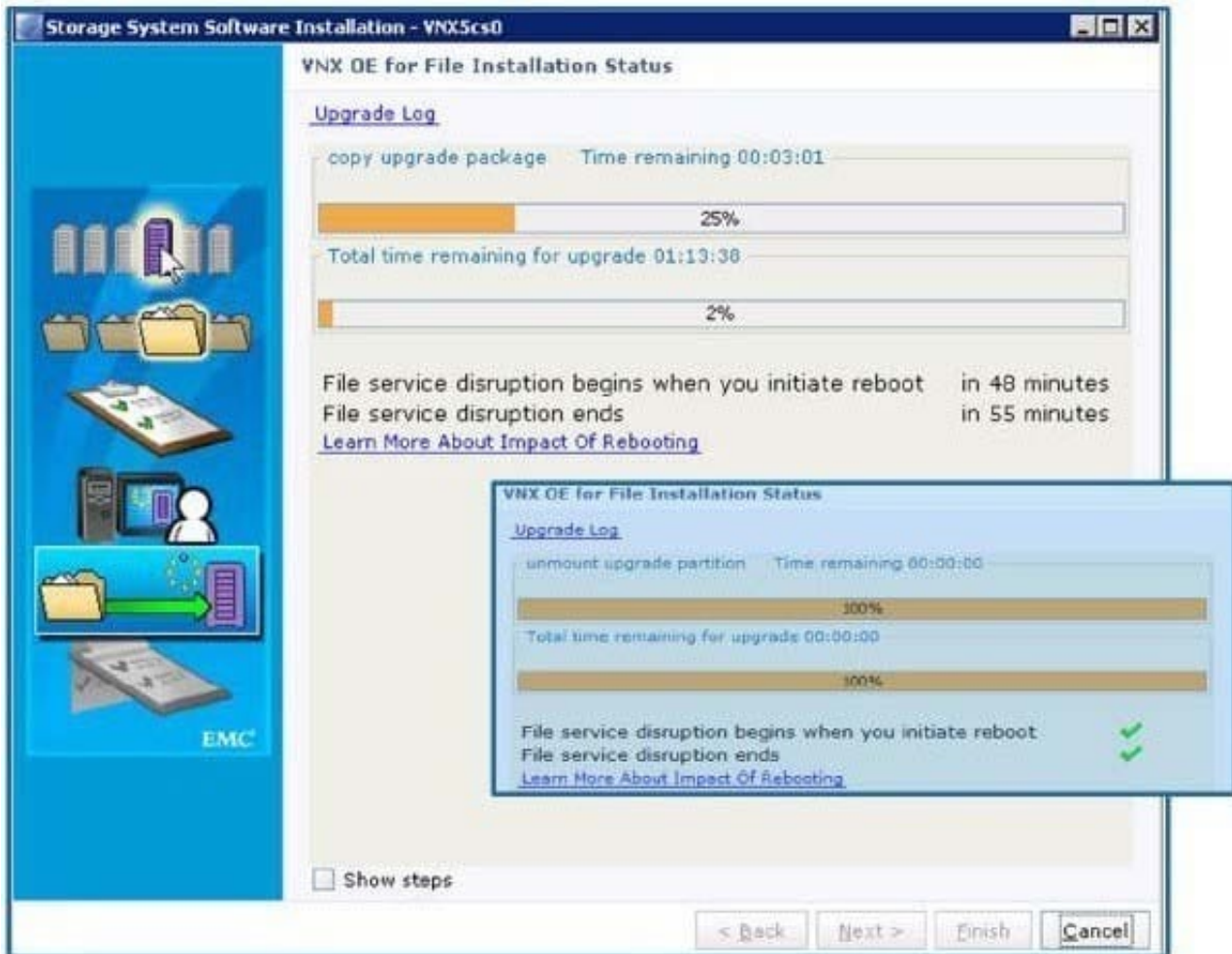
Which type of connection is needed to add a secondary Control Station when using a laptop?

- A. Serial
- B. Network
- C. IEEE 1394
- D. SAS

Correct Answer: D

QUESTION 12

Refer to the exhibit.



You are upgrading a VNX OE for File and a VNX OE for Block storage system in the same operation. You are currently in the VNX OE for File upgrade and accidentally hit the Cancel button. What happens after re-launching the upgrade in USM?

- A. Upgrade will resume at the step where it was canceled
- B. Upgrade will restart from the beginning
- C. Upgrade will fail and support must be called to continue
- D. Upgrade will fail; must continue through the CLI

Correct Answer: A