

100% Money Back
Guarantee

Vendor: HP

Exam Code: HP0-Y32

Exam Name: Design and Troubleshooting Open
Standard Networks

Version: Demo

QUESTION 1

Click the Exhibit button.

Core 1

Running configuration:

; J8697A Configuration Editor; Created on release #K.14.65

```
hostname "Core 1I"  
module 1 type J8702A  
trunk A1-A2 Trk1 Trunk  
snmp-server community "public" Unrestricted  
vlan 1  
  name "DEFAULT_VLAN"  
  untagged A3-A9  
  ip address 10.0.0.1 255.255.255.0  
  no untagged A10-A24,Trk1  
  exit  
vlan 20  
  name "VLAN20"  
  untagged A10-A24  
  tagged Trk1  
  ip address 10.20.0.1 255.255.255.0  
  exit
```

Core 2

Running configuration:

; J8697A Configuration Editor; Created on release #K.14.65

```
hostname "Core 2I"  
module 1 type J8702A  
trunk A1-A2 Trk1 Trunk  
snmp-server community "public" Unrestricted  
vlan 1  
  name "DEFAULT_VLAN"  
  untagged A3-A9  
  ip address 10.0.1.1 255.255.255.0  
  no untagged A10-A24,Trk1  
  exit  
vlan 20  
  name "VLAN20"  
  untagged A10-A24  
  tagged Trk1  
  ip address 10.20.0.2 255.255.255.0  
  exit
```

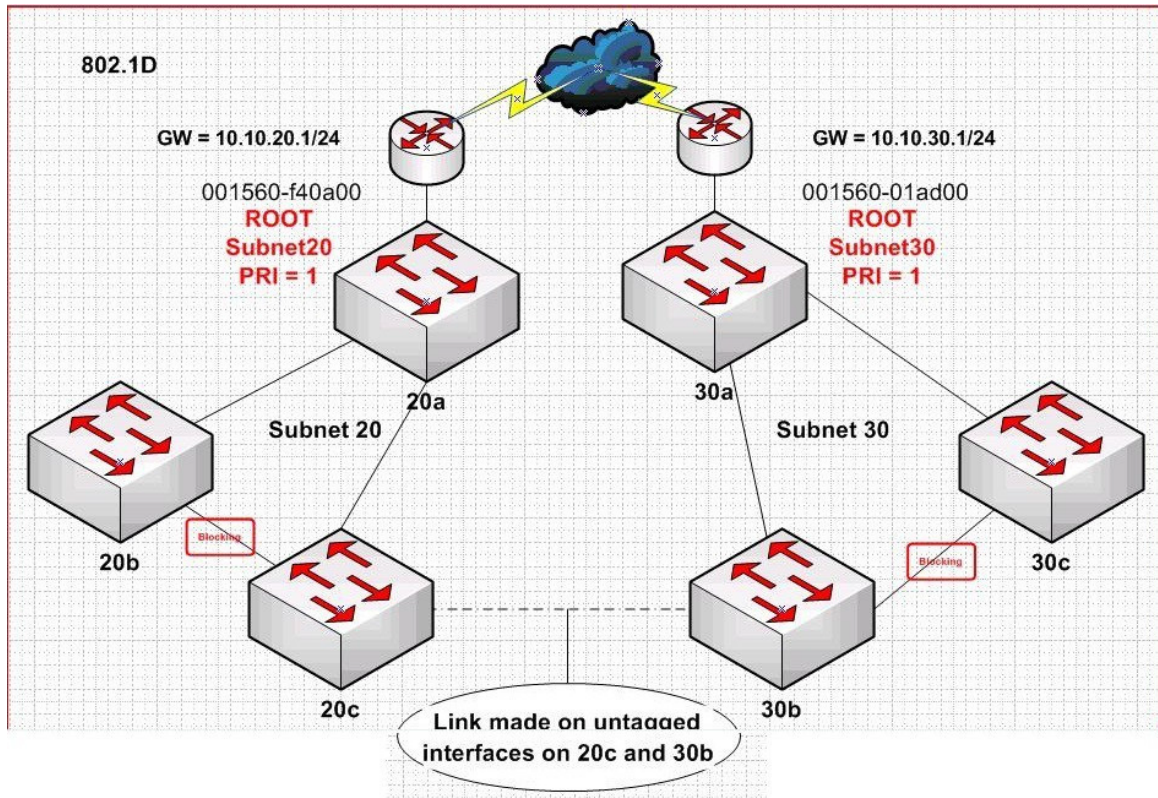
You install two E5400 z1 Series switches and connect them with a two-port static trunk. All hosts on both switches are in VLAN 20. However, some hosts on Core 1 cannot ping some hosts on Core 2 and vice versa. All hosts can ping all hosts on their own switch. Event logs on the two switches do not show significant errors. What should you do to determine the cause of this connectivity issue? (Select three.)

- A. Use traceroute to determine which device is dropping the ping packets.
- B. Verify the trunk configuration on each core switch.
- C. Change the IP address for the default VLAN on Core 2 so that it is in the same subnet as the default VLAN on Core 1.
- D. Verify physical connectivity between the switches.
- E. Use LLDP to check the identities of the devices and their neighbors.

Correct Answer: BDE

QUESTION 2

Click the Exhibit button.



A user adds an untagged link between switch 20c and 30b. What is the impact of the user's actions?

- A. Internet connectivity to subnet 20 users is broken.
- B. STP Root Bridge of Subnet 20 moves.
- C. All Subnet 20 traffic is routed through Subnet 30.
- D. STP alternate path selection remains unchanged.

Correct Answer: B

QUESTION 3

What does a monitor link on an HP A-Series switch allow the switch to do?

- A. check whether an uplink is up and, if it is not, disable a downlink to a server with a redundant link to another switch
- B. check whether a link to an uplink switch is up and, if it not, enable another uplink
- C. check whether it can reach a remote IP address and, if it cannot, lower its priority as a Virtual Router Redundancy Protocol (VRRP) Master

- D. check whether it can reach a remote IP address and, if it cannot, send an SNMP trap or email notification

Correct Answer: A

QUESTION 4

You are configuring a link aggregation between an HP E-5400 zl Series switch at the access layer and a Cisco switch at the aggregation layer. What is one valid reason for using static LACP instead of dynamic LACP?

- A. Cisco's implementation of dynamic LACP is not industry standard.
- B. Cisco switches transmit dynamic LACP frames as tagged in the link aggregation's native VLAN, but HP E-Series switches expect untagged frames.
- C. HP E-Series switch link aggregations can only receive VLAN assignments through GVRP when they implement dynamic LACP.
- D. HP E-Series switches require one side of a dynamic LACP link to operate in passive mode, but Cisco switches support only active mode for dynamic LACP.

Correct Answer: C

QUESTION 5

Using Intelligent Resilient Framework (IRF), you configure two switches to act as a single switch for reasons of resiliency and capacity. You install a cable between the devices connecting their IRF ports. However, the virtual IRF device is still not working. You verify the cable and the physical ports, but cannot get the devices to function. What are possible reasons why the virtual device not working?

- A. The IRF devices do not have unique Member IDs.
- B. The fabric names are the same within the IRF fabric.
- C. IRF active command has not been executed.
- D. The devices are running the same major revision of firmware, but different minor revisions.

Correct Answer: C

QUESTION 6

On an HP A-Series router, you have configured dynamic Network Address Translation (NAT) for IP addresses in the 10.1.0.0/20 range. You have also configured static NAT to permit outside users to connect to various services in the 10.1.14.0/24 subnet. You have also applied a connection limit policy with this rule: limit 0 acl 3001 per-destination amount 800 100ACL 3001 selects 10.1.14.0/24 destination addresses. What is the function of the connection limit policy?

- A. Devices within the 10.1.14.0/24 are allowed to establish between 100 and 800 connections. Other devices in the 10.1.0.0/20 range are banned from NAT.
- B. Devices within the 10.1.14.0/24 are allowed to establish between 100 and 800 connections. Other devices in the 10.1.0.0/20 range have NAT applied to them with no limit.
- C. Outside devices are allowed to make only 100 to 800 connections to devices in the 10.1.14.0/24 range. No limit applies to other devices in the 10.1.0.0/20 range.
- D. Outside devices are allowed to make only 100 to 800 connections to devices in the 10.1.14.0/24 range. They cannot make connections to other devices in the 10.1.0.0/20 range.

Correct Answer: C

QUESTION 7

You choose to configure Intelligent Resilient Framework (IRF) on your two HP A-Series switches. Which advantages does this feature offer? (Select three.)

- A. IRF can use a track to bind a priority reduction to connectivity to an ISP router, providing intelligent selection of the master.
- B. IRF enables the switches to share a virtual IP address and maintain their own IP addresses as well.
- C. IRF provides authentication to prevent unauthorized devices from becoming part of the group.

- D. IRF provides failover for Network Address Translation (NAT) sessions.
- E. IRF offers full load balancing for Layer 2 and Layer 3 traffic on link aggregations that can span both switches.

Correct Answer: CDE

QUESTION 8

Your LAN uses a private network addressing scheme, and you own a single public IP address that all devices share on the Internet. How do you configure Network Address Translation (NAT) on an HP A-Series router to support this implementation?

- A. Select the private IP addresses in an ACL and apply outbound NAT to the ACL on the router's Internet-facing interface.
- B. Configure a server NAT policy that selects the private IP addresses and associates them with an outbound interface.
- C. Create two ACLs, one with the private IP addresses and one with the public IP address. Associate the ACLs in a global many-to-one NAT policy.
- D. Select the private IP addresses in an ACL and apply source NAT to the ACL on the router's LAN-facing interface.

Correct Answer: A

QUESTION 9

Click the Exhibit button.

Config Router #1

```
ospf 3
 area 0.0.0.0
 area 0.0.0.2
  network 100.100.100.0 0.0.0.255
 stub
```

Config Router #2

```
ospf 4
 import-route direct
 area 0.0.0.2
  network 100.100.100.0 0.0.0.255
  network 200.200.200.0 0.0.0.255
 stub
```

```
interface LoopBack1
 ip address 10.10.10.10 255.255.255.255
```

Two HP A-Series Routers are connected together. The route for 10.10.10.10/32 does not show up in Router #1. Why?

- A. Router 2 must be in Area 0.
- B. Area 2 is a stub area and cannot redistribute routes.
- C. Loopback interfaces cannot be announced by OSPF.
- D. There is a mismatch in the OSPF process IDs.

Correct Answer: B

QUESTION 10

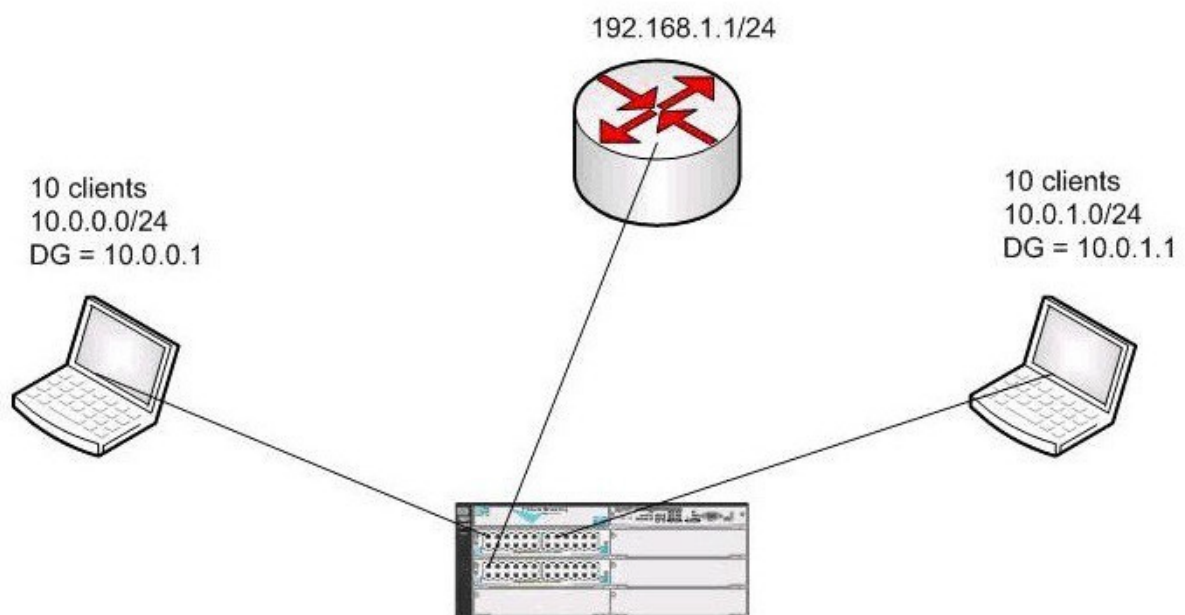
Which statements are true about MSTP? (Select two.)

- A. MSTP is backward compatible with RSTP and STP.
- B. MSTP BPDUs can only be transported in VLAN 1.
- C. MSTP BPDUs are untagged.
- D. MSTP BPDUs are untagged in untagged VLANs and tagged in tagged VLANs.
- E. MSTP BPDUs cannot be sent if VLAN 1 is not enabled.

Correct Answer: AC

QUESTION 11

Some clients in VLAN1 have periodic problems pinging clients in VLAN2 and vice versa. The ping failure can last up to 10 minutes before it corrects itself. The clients in VLAN1 can still ping all the clients in their own VLAN, but cannot reach the Internet or ping clients in VLAN2. Clients in VLAN2 can reach the Internet.



Running configuration:

; J8697A Configuration Editor; Created on release #K.14.65

```
hostname "ProCurve Switch 5406z1"
module 1 type J8702A
ip routing
snmp-server community "public" Unrestricted
vlan 1
    name "DEFAULT_VLAN"
    untagged A13-A24
    ip address 10.0.0.1 255.255.255.0
    no untagged A1-A12
    exit
vlan 2
    name "VLAN2"
    untagged A1-A12
    ip address 10.0.1.1 255.255.255.0
    exit
vlan3
    name "Internet"
    untagged C1
    ip address 192.168.1.10 255.255.255.0
    exit
ip route 0.0.0.0 0.0.0.0 192.168.1.1
```

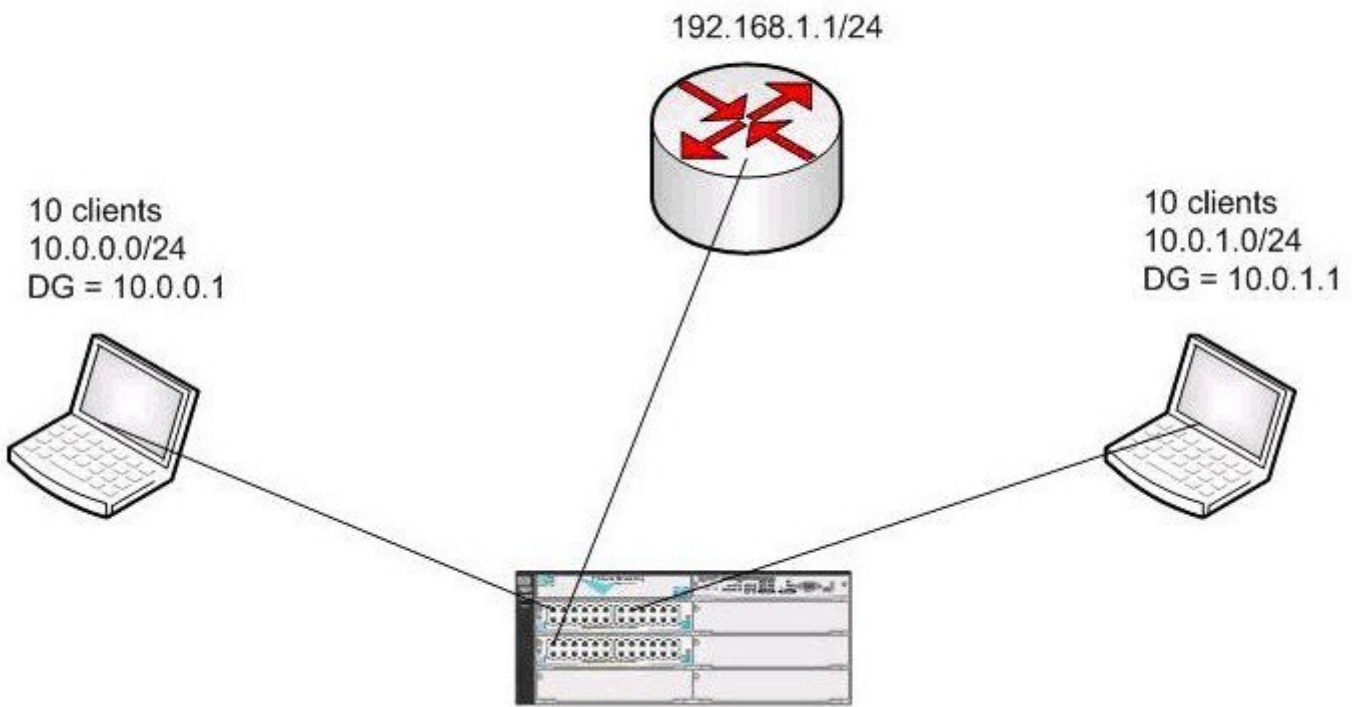
Based on these basic facts, what can you "rule out" as possible causes of this problem? (Select Three)

- A. The external gateway having no route to VLAN 2.
- B. Miconfigured clients in VLAN1
- C. A transient layer 1 issue
- D. The firewall enabled on the client causing connectivity issues.
- E. A loop in VLAN1

Correct Answer: ACD

QUESTION 12

Which step will provide helpful information about the issue?



Running configuration:

; J8697A Configuration Editor; Created on release #K.14.65

```
hostname "ProCurve Switch 5406z1"
module 1 type J8702A
ip routing
snmp-server community "public" Unrestricted
vlan 1
    name "DEFAULT_VLAN"
    untagged A13-A24
    ip address 10.0.0.1 255.255.255.0
    no untagged A1-A12
    exit
vlan 2
    name "VLAN2"
    untagged A1-A12
    ip address 10.0.1.1 255.255.255.0
    exit
vlan3
    name "Internet"
    untagged C1
    ip address 192.168.1.10 255.255.255.0
    exit
ip route 0.0.0.0 0.0.0.0 192.168.1.1
```

- A. Analyze the port statistic for the client you are pinging from.
- B. Compare the arp table entries on the client when it works and it does not.
- C. Analyze the port statistics for the switch to which the client is connected.
- D. Analyze the port statistics for all clients in VLAN2 when the problem occurs.

Correct Answer: B

QUESTION 13

Your LAN has a dozen VLANs, and you connect the VLANs using inter-VLAN routing. Your system has been stable for over a month, but traffic is rapidly growing and several types of video are beginning to dominate the traffic mix. Users are now reporting that voice quality is degraded, browser pages do not load completely, and file transfers timeout and end prematurely. What are the most likely causes of these problems? (Select two.)

- A. The maximum number of VLANs is set too low.
- B. The voice VLAN has 802.1p priority 8.
- C. The prioritization in the 802.1p field is such that certain traffic is not getting sufficient bandwidth.
- D. The inter-VLAN routes have a metric of 1.
- E. Video traffic is pre-empting other traffic.

Correct Answer: CE

QUESTION 14

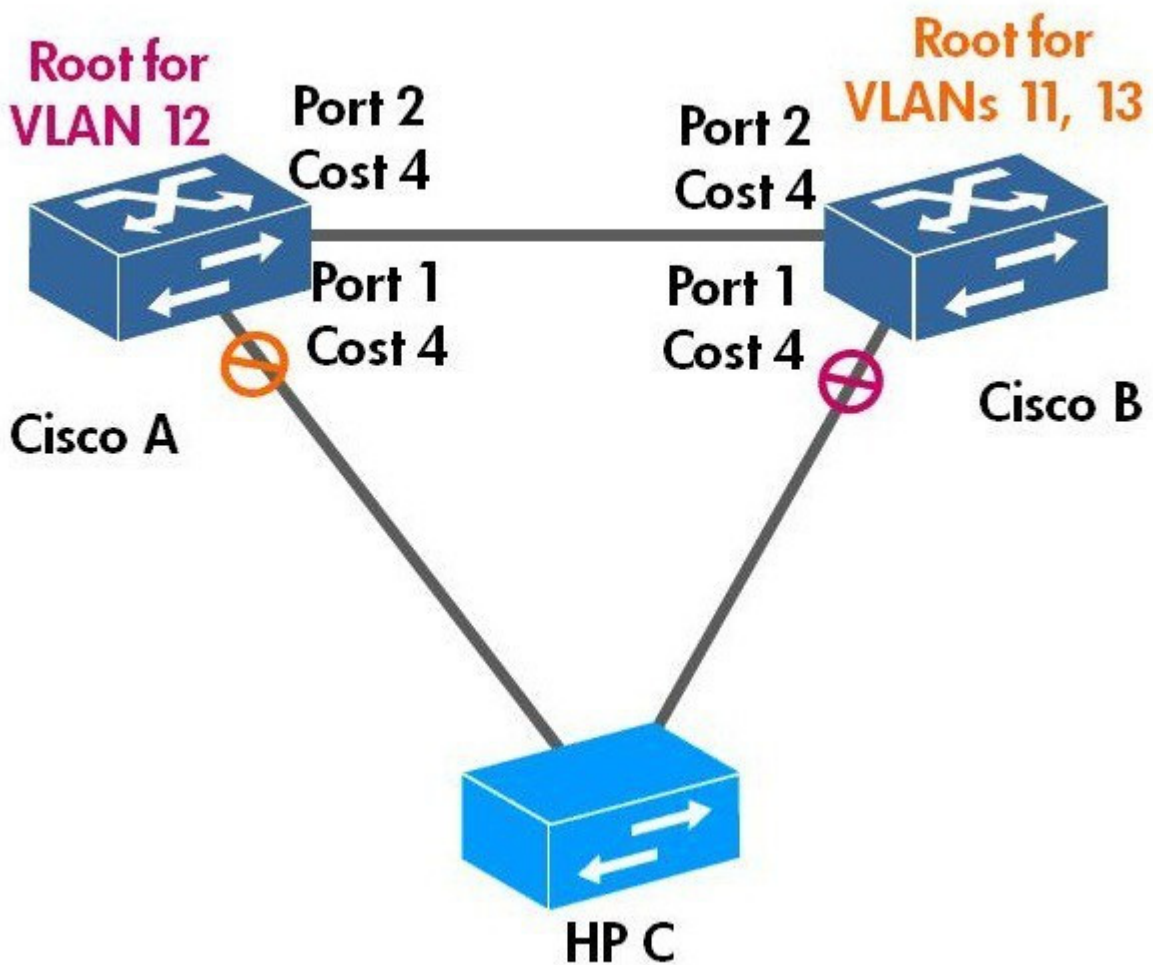
Which methods can HP A-Series switches use to provide router redundancy with load balancing? (Select two.)

- A. Gateway Load Balancing Protocol (GLBP)
- B. Virtual Router Redundancy Protocol (VRRP) with load balancing
- C. router redundancy using Extended Router Redundancy Protocol (XRRP)
- D. Intelligent Resilient Framework (IRF)
- E. Hot Standby Router Protocol (HSRP)

Correct Answer: BD

QUESTION 15

Click the Exhibit button.



The Cisco switches in the network shown in the exhibit are implementing Rapid Per-VLAN Spanning Tree (Rapid PVST+). A network administrator disables STP on the HP device. What happens?

- A. The PVST+ topology does not change.
- B. The link between the aggregation switches is blocked.
- C. A broadcast storm occurs on the network loop.
- D. A broadcast storm occurs unless the Cisco switches implement loop protection.

Correct Answer: A

QUESTION 16

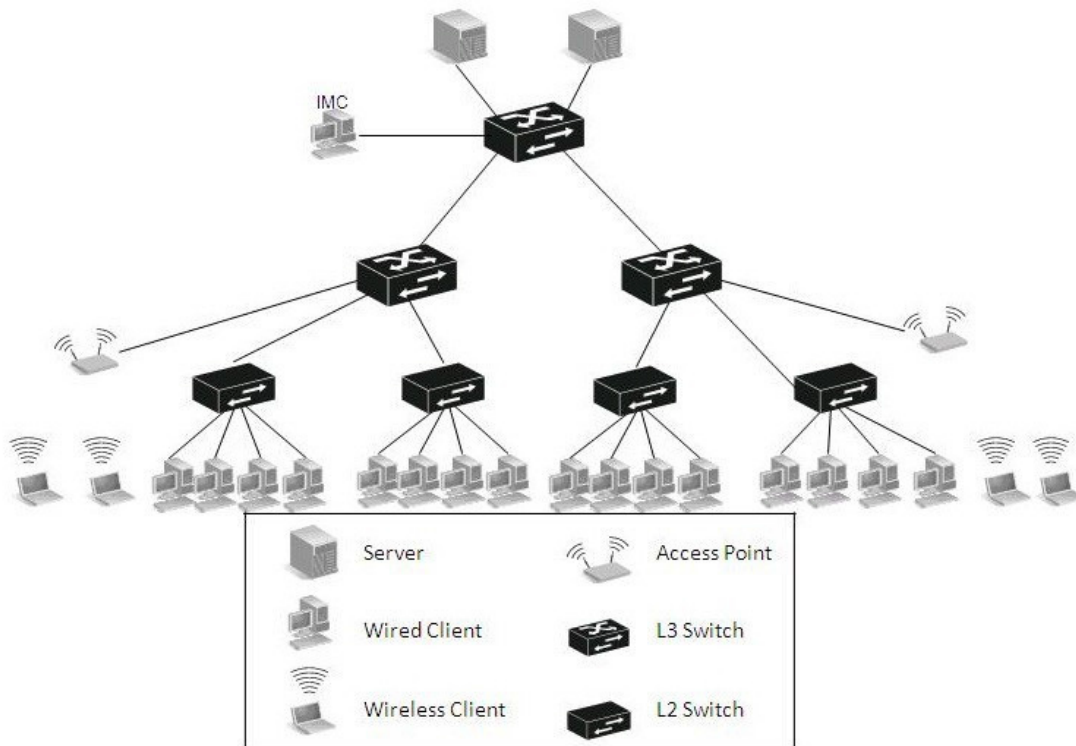
You enter the following configuration commands on an HP A-Series switch:[Switch] vlan 10[Switch- vlan10] port gigabitethernet 3/0/1 to gigabitethernet 3/0/24What happens?

- A. The ports become hybrid ports that permit VLAN 10.
- B. The ports become trunk ports with PVID VLAN 10.
- C. The ports become access ports in VLAN 10.
- D. If the ports are already configured as trunk ports, VLAN 10 is permitted on them.

Correct Answer: C

QUESTION 17

Click the Exhibit button.



Which devices must be in a separate VLAN? (Assume all wired clients are connected using GbE.)

- A. core switch
- B. access switches
- C. access points
- D. aggregation switches
- E. servers

Correct Answer: C

QUESTION 18

Click the Exhibit button (two exhibits are provided).

Router 1 Configuration

```
#
bgp 1
  undo synchronization
  peer 7.7.7.7 as-number 1
#
interface LoopBack0
  ip address 1.1.1.1 255.255.255.255
#
```

Router 2 Configuration

```
#
bgp 1
  undo synchronization
  peer 1.1.1.1 as-number 1
#
interface LoopBack2
  ip address 7.7.7.7 255.255.255.255
#
```

```
[RT2-bgp]display bgp peer
```

```
BGP local router ID : 7.7.7.7
```

```
Local AS number : 1
```

```
Total number of peers : 1
```

```
Peers in established state : 0
```

Peer	AS	MsgRcvd	MsgSent	OutQ	PrefRcv	Up/Down	State
1.1.1.1	1	0	0	0	0	00:01:14	Active

Two routers are iBGP peers with each other. Given the two configurations shown in the exhibit, what is the status of the peer relationship?

- A. A peering relationship is established between the two routers and they are actively exchanging routes.
- B. A peering relationship is not established between the two routers because they must connect to different Autonomous Systems.
- C. A peering relationship is established between the two routers but they are not actively exchanging

routes.

- D. A peering relationship is not established between the two routers since the "connect-interface" option is not used.

Correct Answer: D

QUESTION 19

You have entered four commands on an HP E5400 zl Series switch: Switch(config)# vlan 10 untagged A1-A24Switch(config)# vlan 20 tagged A1-A24Switch(config)# vlan 30 untagged A1- A24Switch(config)# vlan 40 tagged A1-A24What is the VLAN membership for ports A1 to A24?

- A. They are untagged members of VLANs 10 and 30, and tagged members of VLANs 20 and 40.
- B. They are tagged members of VLAN 40.
- C. They are untagged members of VLAN 30 and tagged members of VLANs 20 and 40.
- D. They are untagged members of VLAN 30 and tagged members of VLAN 40.

Correct Answer: C

QUESTION 20

You are using HP Intelligent Management Center (IMC) to manage your HP and Cisco devices. Which settings must be properly configured on the devices for IMC to discover them? (Select two.)

- A. SNMPv2 read-only community
- B. SNMP trap server
- C. IP address
- D. LLDP
- E. SNMPv3 community

Correct Answer: AC

QUESTION 21

Click the Exhibit button.

End users in the enterprise served by this HP E3500 yl switch have reported that they cannot access resources in the server farm. Which configuration change will correct this issue?

- A. applying the End User ACL to VLAN 115 in the inbound direction
- B. assigning IP address 10.115.0.1 to VLAN 115
- C. adding a static route from VLAN 115 to VLAN 110
- D. adding a default route to VLAN 110

Correct Answer: B

QUESTION 22

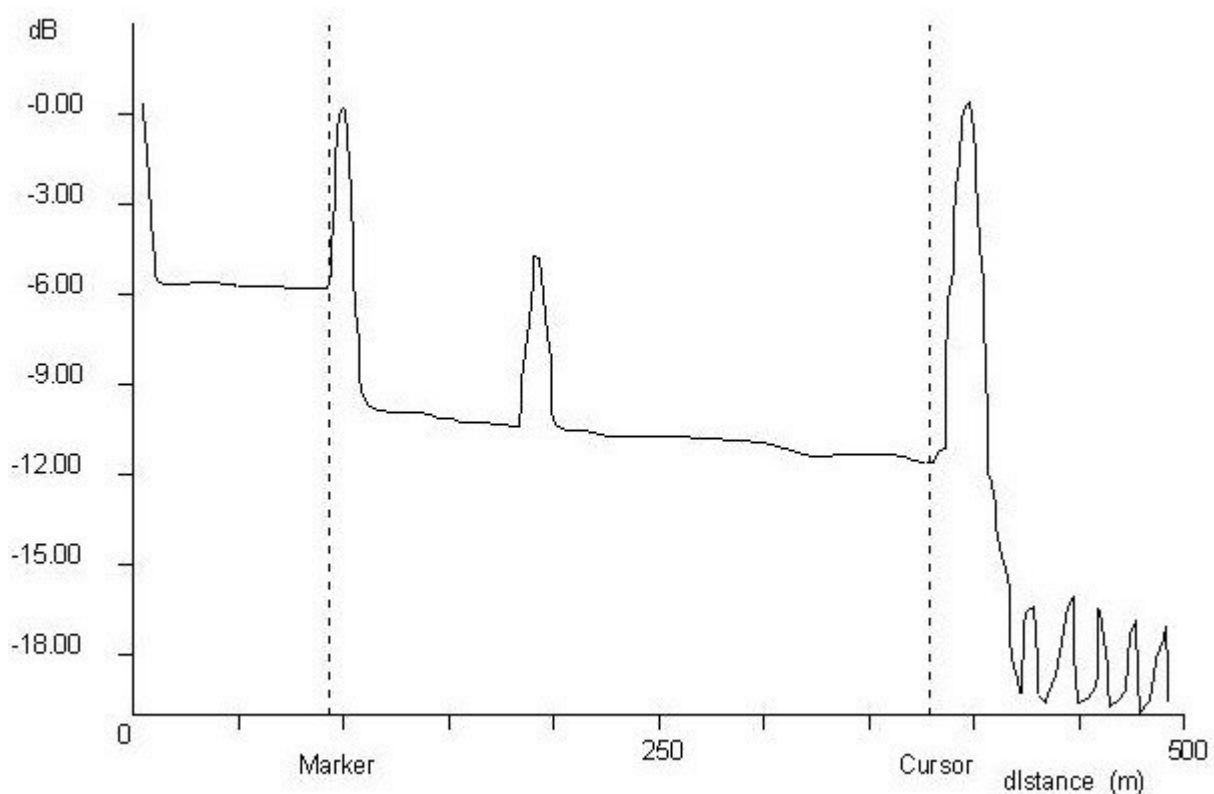
A Cisco switch that is implementing Rapid Per-VLAN Spanning Tree Plus (Rapid PVST+) connects to an HP switch that is implementing Multiple Spanning Tree Protocol (MSTP). The connecting switch ports use VLAN 1 as the default VLAN and permit VLANs 1, 2, and 3. Which type of BPDU does the Cisco switch transmit on VLAN 2, and what does the HP switch do with it?

- A. The Cisco switch transmits a RPVST+ BPDU that is tagged for VLAN 2 and the HP switch drops it.
- B. The Cisco switch transmits a RSTP BPDU that is tagged for VLAN 2 and the HP switch inspects it and forwards it out its other interfaces.
- C. The Cisco switch transmits a RPVST+ BPDU that is tagged for VLAN 2 and the HP switch forwards it out its other interfaces.
- D. The Cisco switch transmits a RSTP BPDU that is tagged for VLAN 2 and the HP switch drops it.

Correct Answer: C

QUESTION 23

Click the Exhibit button.



Which issue does the Optical Time Domain Reflectometer (OTDR) show?

- A. out of phase
- B. extensive attenuation
- C. loss of [optical] signal
- D. bend or kink in the optical cable
- E. low frequency roll-off

Correct Answer: B

QUESTION 24

Click the Exhibit button.

A security audit determined that users in the Guest VLAN have access to all internal network resources. Which configuration change will correct this security issue?

- A. applying the End User ACL to VLAN 110 in the outbound direction
- B. creating an additional ACL to block guest traffic and applying it to VLAN 116 in the inbound direction
- C. creating a Server ACL that will block all traffic from VLAN 116
- D. applying the Guest ACL to VLAN 116 to outbound traffic

Correct Answer: D

QUESTION 25

In order to optimize performance on your network, you enable Ethernet Jumbo Frames. You now occasionally get errors because the Jumbo Frames are not being delivered to their destination. What is the most likely cause?

- A. The Differentiated Services Code Point (DSCP) bits are set to 0. Jumbo Frames require priority status.
- B. The Explicit Congestion Notification bit in the DSCP field is set to 1. Jumbo Frames work better in networks with Explicit Congestion Notification enabled.

- C. The MTU size on some intermediate device is too small, and the Don't Fragment bit in the Jumbo Frame's IP header is set to 1.
- D. Jumbo Frame format is not compatible with all traffic types.

Correct Answer: C

QUESTION 26

You have a network with Cisco switches at the core and aggregation layer. These switches implement Rapid Per-VLAN Spanning Tree Plus (RPVST+). You add an HP E-Series switch at the edge, connecting it to two aggregation layer switches, which also connect to each other. What can you do to ensure that the HP E-Series switch does not form loops on uplinks to the aggregation layer or downlinks to edge devices?

- A. Ensure the default VLAN is set up properly on the uplink port and enable loop protection on the downlink (edge) ports.
- B. Configure a smart link group for the uplink ports and protect all VLANs.
- C. Run RPVST+ in STP compatibility mode.
- D. Ensure the default VLAN is set up properly on the downlink ports and enable loop protection on the uplink ports.

Correct Answer: A

QUESTION 27

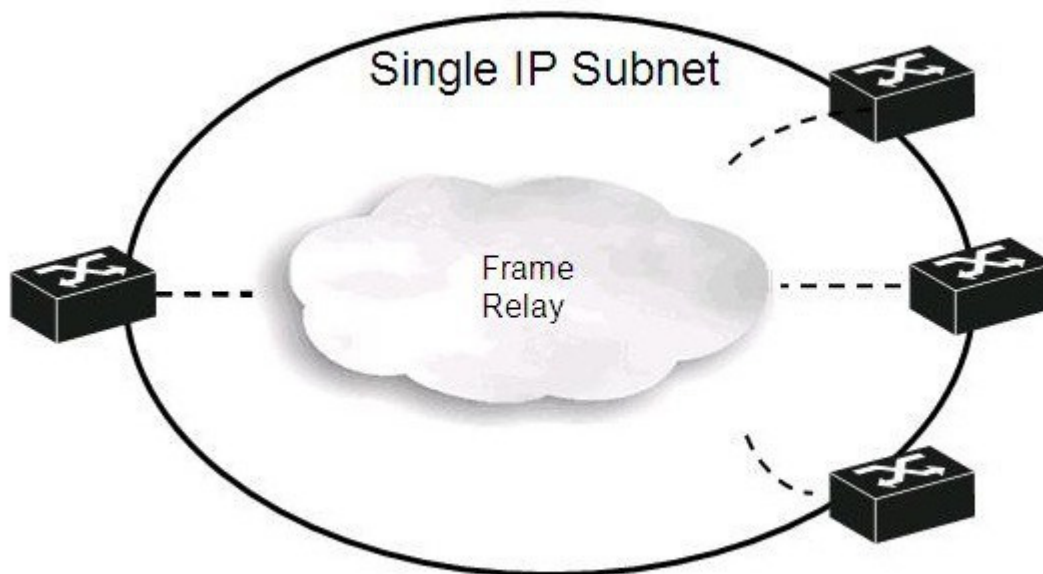
You have two HP A-Series switches at the aggregation layer, two Cisco switches at the core, and several Cisco switches at the edge. To provide redundancy, you will connect each edge switch to both aggregation switches and both aggregation switches to both core switches. How can you quickly configure the switches to prevent broadcast storms and to utilize bandwidth efficiently?

- A. Implement smart link on the HP A-Series downlinks and loop guard on all of the Cisco switches' uplinks and downlinks.
- B. Implement loop guard on the HP A-Series downlinks, loop guard on the Cisco switches' downlinks, and smart link on the Cisco switches' uplinks.
- C. Implement Rapid Per-VLAN Spanning Tree Plus (Rapid PVST+) on each switch.
- D. Implement Intelligent Resilient Framework (IRF) on the HP A-Series switches and link aggregation groups between the Cisco and HP switches.

Correct Answer: D

QUESTION 28

Click the Exhibit button.



What is the optimal subnet mask for the frame relay interfaces (assuming p2mp) of the routers shown in the exhibit?

- A. 255.255.255.255 (/32)
- B. 255.255.255.254 (/31)
- C. 255.255.255.252 (/30)
- D. 255.255.255.248 (/29)
- E. 255.255.255.240 (/28)

Correct Answer: D

QUESTION 29

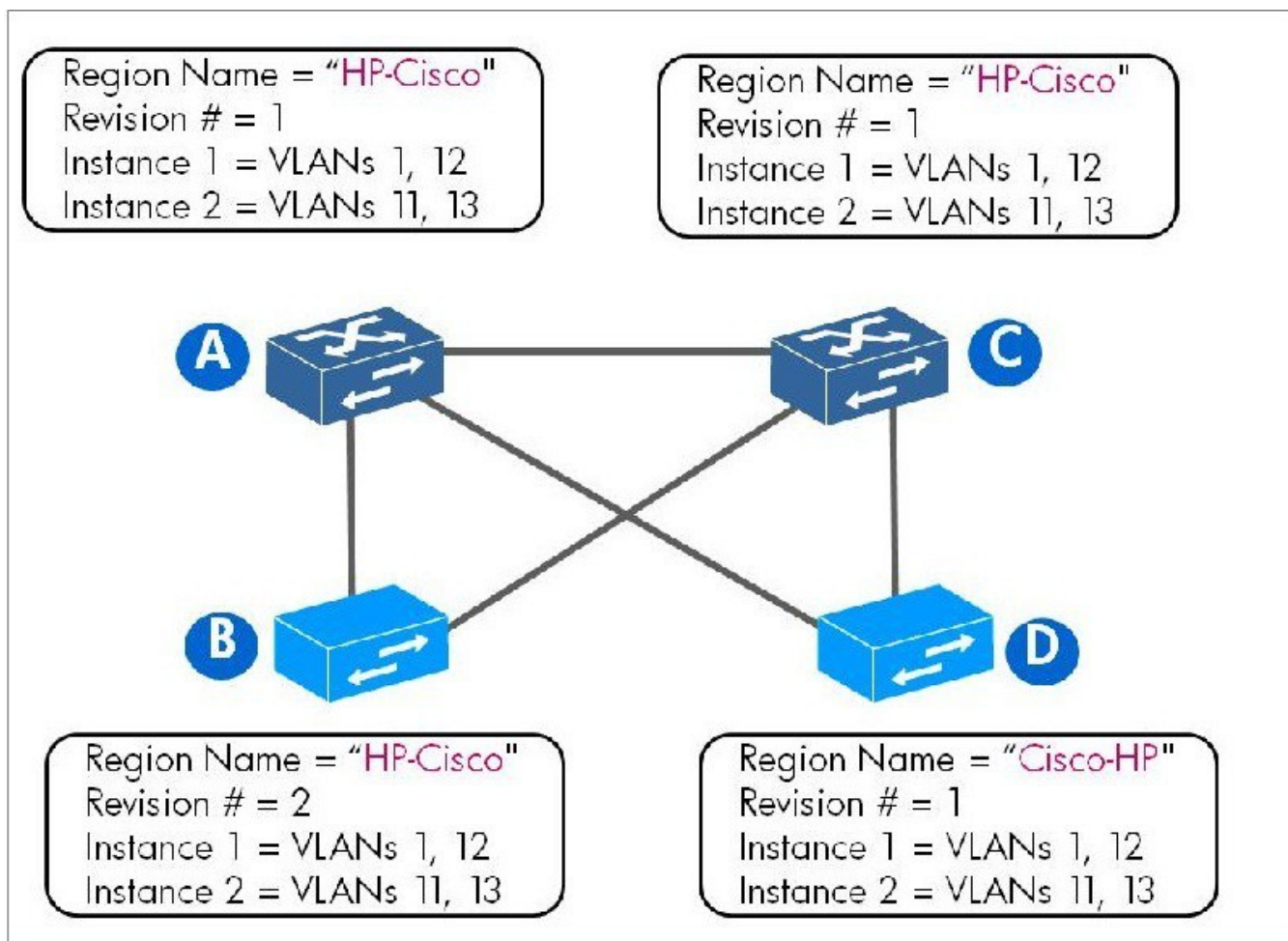
You construct a Virtual Private Network (VPN) using Layer 2 Tunneling Protocol (L2TP). The VPN works most of the time, but occasionally remote users cannot connect at all, or they can connect intermittently. What is the most likely reason?

- A. Packet loss is causing the connection to be unstable, particularly during high volume/usage periods.
- B. A hacker, or other user with the same tunnel instance, is accessing the VPN account.
- C. There is an error in the DHCP lease, and the users' IP address has expired.
- D. The encryption scheme being used is 1024 bit Advanced Encryption Standard (AES), which has very high overhead for key exchange.

Correct Answer: A

QUESTION 30

Click the Exhibit button.



Examine the MSTP implementation shown in the exhibit. How do devices C and D exchange BPDU?

- A. They cannot exchange BPDUs.
- B. They exchange MSTP BPDUs.
- C. They exchange RSTP BPDUs.
- D. They exchange CIST BPDUs.

Correct Answer: B

QUESTION 31

You are analyzing a packet capture for Voice-over-IP. The Layer 3 protocol is IPv4. The Layer 4 protocol is UDP and the Layer 5 protocol is Real Time Protocol. Your analysis indicates that the UDP packet has a header checksum of all zeros. Which statement about the UDP header checksum is correct?

- A. An incorrect or missing checksum will cause dropped packets and explains the degraded voice problem.
- B. UDP often does not use a header checksum. Only an incorrect checksum, if present, will cause a problem.
- C. An all zeros checksum indicates that there is no payload in the packet.
- D. UDP does not use a checksum with VoIP because single bit errors in voice samples are not noticeable to listeners.

Correct Answer: B

QUESTION 32

Users are reporting slow network and voice quality issues. You check the switch performance and determine that the uplink port is oversubscribed, but that the priority mechanisms should compensate. How do you check the priority settings on the network traffic? (Select two.)

- A. Check the configuration of the switches to ensure that priority fields are being mapped from the IP TOS/DSCP field.
- B. Check the 802.1p values of the untagged traffic to ensure they are properly prioritized.
- C. Check the 802.1p values in the 802.1q tags.
- D. Monitor the source and destination MAC addresses to ensure that they have a DSCP value of zero.

Correct Answer: AC

QUESTION 33

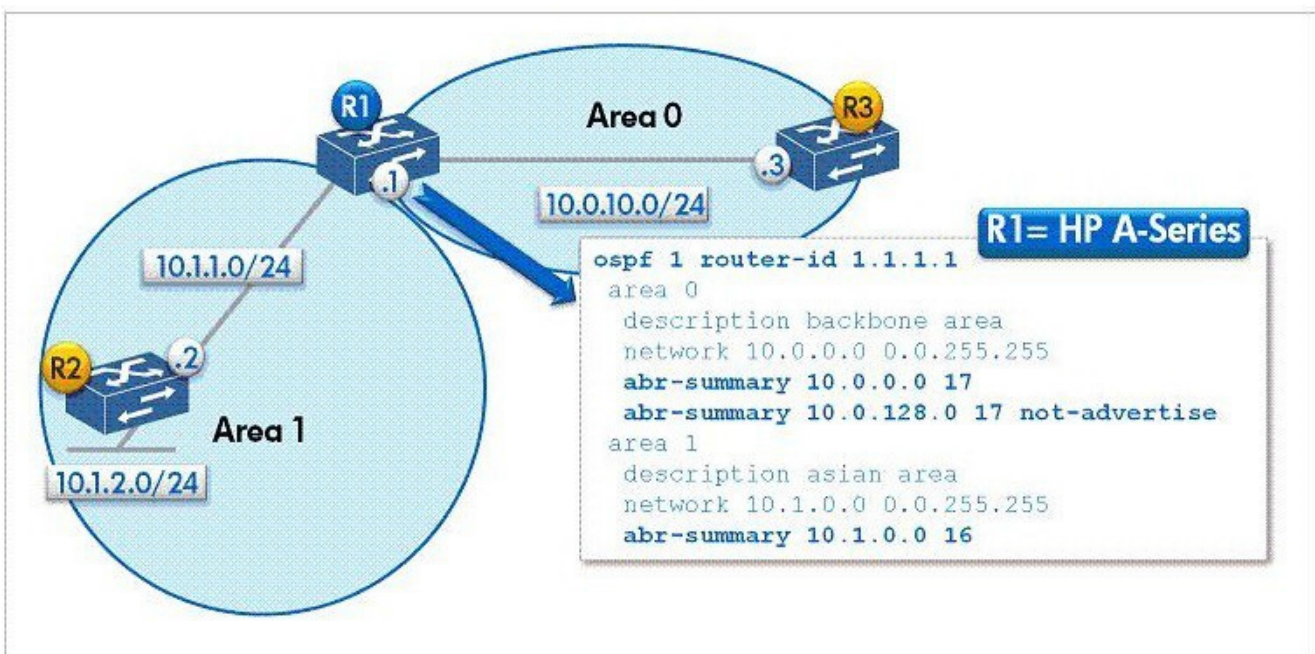
In your LAN, a Cisco router and an HP A-Series router both offer connections to the Internet. These routers run BGP to communicate with ISP routers and OSPF to communicate with routing switches in the LAN. Both inject a default route into OSPF. You want to ensure that all local routers select the route offered by the HP A-Series router and use the route offered by the Cisco router as a backup. How can you do so?

- A. On both routers, set the metric type for the injected default route to 2. Set the cost for the route higher on the Cisco router.
- B. On both routers, set the metric type for the injected default route to 2. Set the cost for the route higher on the HP A-Series router.
- C. On both routers, set the metric type for the injected default route to 1. Set the cost for the route higher on the Cisco router.
- D. On both routers, set the metric type for the injected default route to 1. Set the cost for the route higher on the HP A-Series router.

Correct Answer: B

QUESTION 34

Click the Exhibit button.



Which route is received by a router in the system shown in the exhibit?

- A. 10.0.0.0 /17 on R2
- B. 10.0.0.0 /16 on R2
- C. 10.0.0.0 /17 on R3
- D. 10.0.0.0 /16 on R3

Correct Answer: A

QUESTION 35

An HP A-Series routing switch is acting as the Area Border Router (ABR) for a Cisco router in a Not So Stubby Area (NSSA) with area ID 2. The HP A-Series router defines the area with these commands: `area 2 network 10.2.0.0 16 nssa no-summary` Which statement correctly describes the routes and information that the HP-A Series ABR sends to the Cisco router?

- A. The ABR sends a default route and summaries of the subnet ranges in other areas.
- B. The ABR sends neither a default route nor information about subnets in other areas.
- C. The ABR sends a default route and advertisements for all subnets in other areas.
- D. The ABR sends only a default route.

Correct Answer: D

QUESTION 36

Which topology provides the best balance between redundancy and simplicity (ease of configuration and maintenance)?

- A. star
- B. ring
- C. dual star
- D. dual ring
- E. mesh

Correct Answer: C

To Read the [Whole Q&As](#), please purchase the [Complete Version](#) from [Our website](#).

Trying our product !

- ★ **100%** Guaranteed Success
- ★ **100%** Money Back Guarantee
- ★ **365 Days** Free Update
- ★ **Instant Download** After Purchase
- ★ **24x7** Customer Support
- ★ Average **99.9%** Success Rate
- ★ More than **69,000** Satisfied Customers Worldwide
- ★ Multi-Platform capabilities - **Windows, Mac, Android, iPhone, iPod, iPad, Kindle**

Need Help

Please provide as much detail as possible so we can best assist you.

To update a previously submitted ticket:



 One Year Free Update <p>Free update is available within One Year after your purchase. After One Year, you will get 50% discounts for updating. And we are proud to boast a 24/7 efficient Customer Support system via Email.</p>	 Money Back Guarantee <p>To ensure that you are spending on quality products, we provide 100% money back guarantee for 30 days from the date of purchase.</p>	 Security & Privacy <p>We respect customer privacy. We use McAfee's security service to provide you with utmost security for your personal information & peace of mind.</p>
---	---	--

[Guarantee & Policy](#) | [Privacy & Policy](#) | [Terms & Conditions](#)

Any charges made through this site will appear as Global Simulators Limited.

All trademarks are the property of their respective owners.

Copyright © 2004-2015, All Rights Reserved.