

100% Money Back
Guarantee

Vendor:HP

Exam Code:HP0-Y51

Exam Name:Building HP SDN and FlexNetwork
Solutions

Version:Demo

QUESTION 1

A Company has APs that are deployed relatively close together. These APs are controlled by an HP Unified Wired-Wireless controller. Which setting helps to prevent the APs from interfering with each other while also letting the APs extend their coverage area if one of the AP fails?

- A. Channel reuse
- B. Dynamic frequency selection (DFS)
- C. Transmit power control (TPC)
- D. Fair scheduling

Correct Answer: A

QUESTION 2

Table of Acronyms

An administrator is setting up an EVI solution on four HP Comware switches. The switches reach each other on these IP address:

Switch1 = 10.1.1.1

Switch2 = 10.2.2.2

Switch3 = 10.3.3.3

Switch4 = 10.4.4.4

The administrator wants to make Switch1 and Switch2 potential EVI Network Discovery Protocol (ENDP) servers. What is the proper configuration on the Switch1 EVI tunnel interface?

- A. evi neighbor-discovery server enable evi neighbor-discovery client enable 10.1.1.1
- B. evi neighbor-discovery server enable evi neighbor-discovery client enable 10.2.2.2
- C. evi neighbor-discovery client enable 10.3.3.3 evi neighbor-discovery client enable 10.4.4.4
- D. evi neighbor-discovery client enable 10.3.3.3 evi neighbor-discovery client enable 10.4.4.4

Correct Answer: AB

Reference: <http://www8.hp.com/h20195/v2/getpdf.aspx/c04311472.pdf?ver=1.0> (page 4)

QUESTION 3

Refer to the exhibit. (Note: the IDs in the exhibit have been truncated to simplify references to them)

```
sdn@sdnctl1:~$ keystone role-list
+-----+-----+
| id | name |
+-----+-----+
| 94 | sdn-user |
| d0 | sdn-admin |
+-----+-----+

sdn@sdnctl1:~$ keystone tenant-list
+-----+-----+-----+
| id | name | enabled |
+-----+-----+-----+
| 0c | sdn | True |
+-----+-----+-----+

sdn@sdnctl1:~$ keystone user-list
+-----+-----+-----+-----+
| id | name | enabled | email |
+-----+-----+-----+-----+
| 1c | sdn | True | |
| 9b | rsdoc | True | |
| a6 | monitor | True | |
+-----+-----+-----+-----+
```

An administrator creates user "monitor", who should have read only access to the HP VLAN SDN Controller. The administrator needs to enter this command to

finish up the user account.

```
keystone user-add-role --user-ID ID1 --tenant-id ID2 --role-ID ID3
```

What are the correct values for ID1, ID2, and ID3?

- A. ID1 = 94; ID2 = a6; ID3=0c
- B. ID1 = a6; ID2 = 0c; ID3=94
- C. ID1 = 9b; ID2 = a6; ID3=d0
- D. ID1 = a6; ID2 = 0c; ID3=d0

Correct Answer: A

QUESTION 4

A company has an HP Unified Wired-Wireless controller that controls HP MultiService Mobility (MSM) APs. The network administrator wants to implement protection against rogue APs in the company's campus environment. Only APs that have approved MAC addresses should be allowed to operate and support clients. Controlled APs should send disassociation frames to prevent clients from connecting to rogue APs.

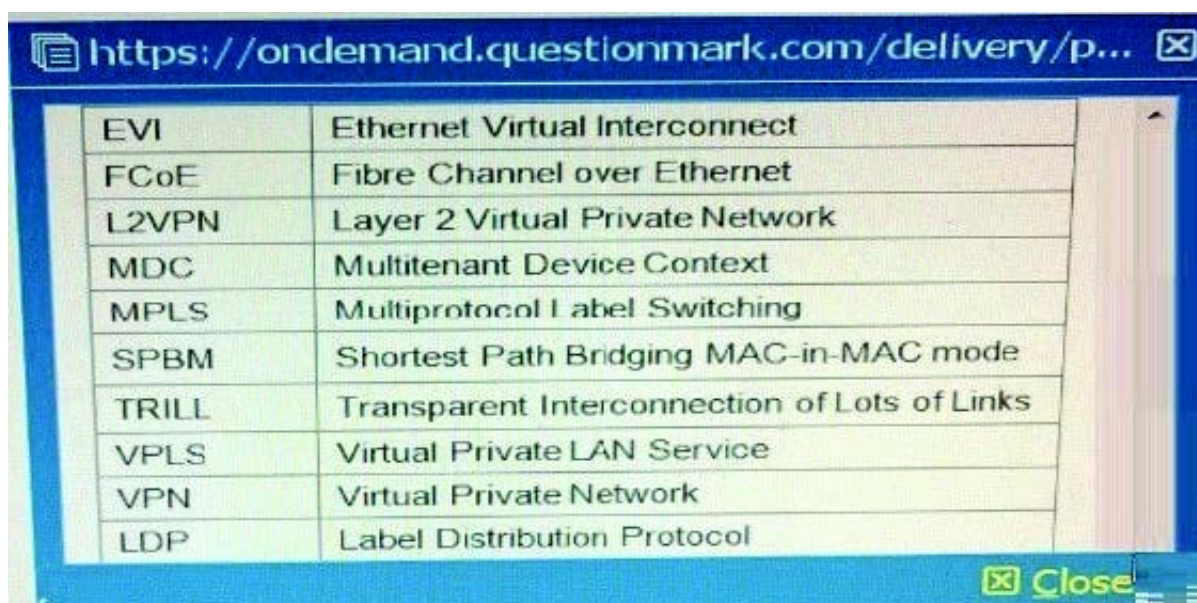
The administrator sets up APs to monitor the area and creates a permitted MAC address list with the approved AP MAC addresses. The administrator has not configured any other Intrusion Detection System (IDS) settings. Which additional step must the administrator complete?

- A. Enable a dynamic blacklist.
- B. Configure the permitted vendor and permitted SSID lists.
- C. Enable countermeasures.
- D. Deploy the permitted MAC address list as a static attack list to each controlled AP

Correct Answer: C

QUESTION 5

Table of Acronyms



Acronym	Full Name
EVI	Ethernet Virtual Interconnect
FCoE	Fibre Channel over Ethernet
L2VPN	Layer 2 Virtual Private Network
MDC	Multitenant Device Context
MPLS	Multiprotocol Label Switching
SPBM	Shortest Path Bridging MAC-in-MAC mode
TRILL	Transparent Interconnection of Lots of Links
VPLS	Virtual Private LAN Service
VPN	Virtual Private Network
LDP	Label Distribution Protocol

Which HP IMC module helps companies to manage TRILL and SPBM solutions, as well as converged LAN/SAN

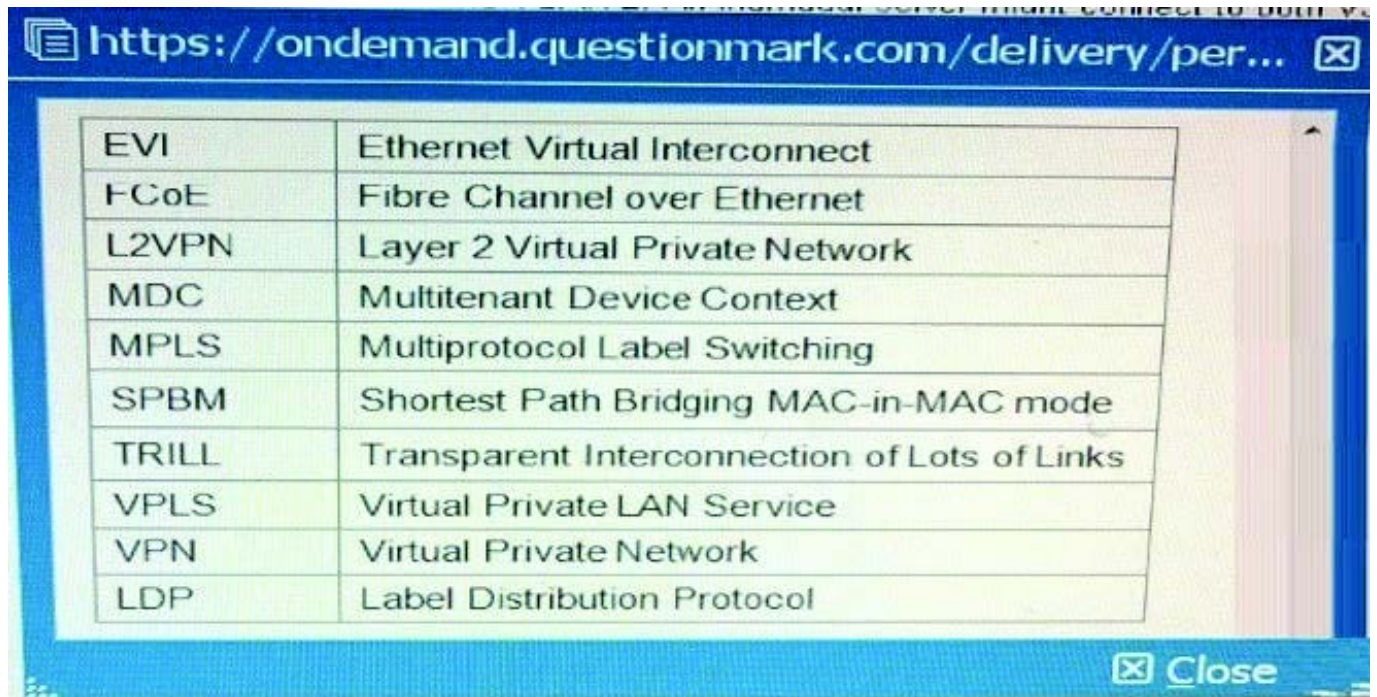
solutions?

- A. HP VAN Connection Manager
- B. HP VAN SDN Manager
- C. HP VAN Resource Manager
- D. HP VAN Fabric Manager

Correct Answer: B

QUESTION 6

Table of Acronyms



The image shows a screenshot of a web browser window. The address bar displays the URL <https://ondemand.questionmark.com/delivery/per...>. The main content area contains a table with two columns: the acronym and its full name. The table is as follows:

EVI	Ethernet Virtual Interconnect
FCoE	Fibre Channel over Ethernet
L2VPN	Layer 2 Virtual Private Network
MDC	Multitenant Device Context
MPLS	Multiprotocol Label Switching
SPBM	Shortest Path Bridging MAC-in-MAC mode
TRILL	Transparent Interconnection of Lots of Links
VPLS	Virtual Private LAN Service
VPN	Virtual Private Network
LDP	Label Distribution Protocol

At the bottom right of the browser window, there is a 'Close' button.

An administrator has configured an HP Comware IRF virtual device to support FCoE in Fibre Channel Forwarder (FCF) mode. The IRF device supports VLAN 1, 10, 20, and 30.

The device requires two virtual SANs (VSANs), VSAN 1 and VSAN 2. An individual server might connect to for binding the VSANs. What is valid configuration to VLANs?

- A. VSAN 1 and VSAN 2 to VLAN 10
- B. VSAN 1 and VSAN 2 to VLAN 1; VSAN 1 to VLAN 10; VSAN 2 to VLAN 20
- C. VSAN 1 and VSAN 2 to VLAN 10; VSAN 1 and VSAN 2 to VLAN 20
- D. VSAN 1 to VLAN 10; VSAN 2 to VLAN 20

Correct Answer: D

QUESTION 7

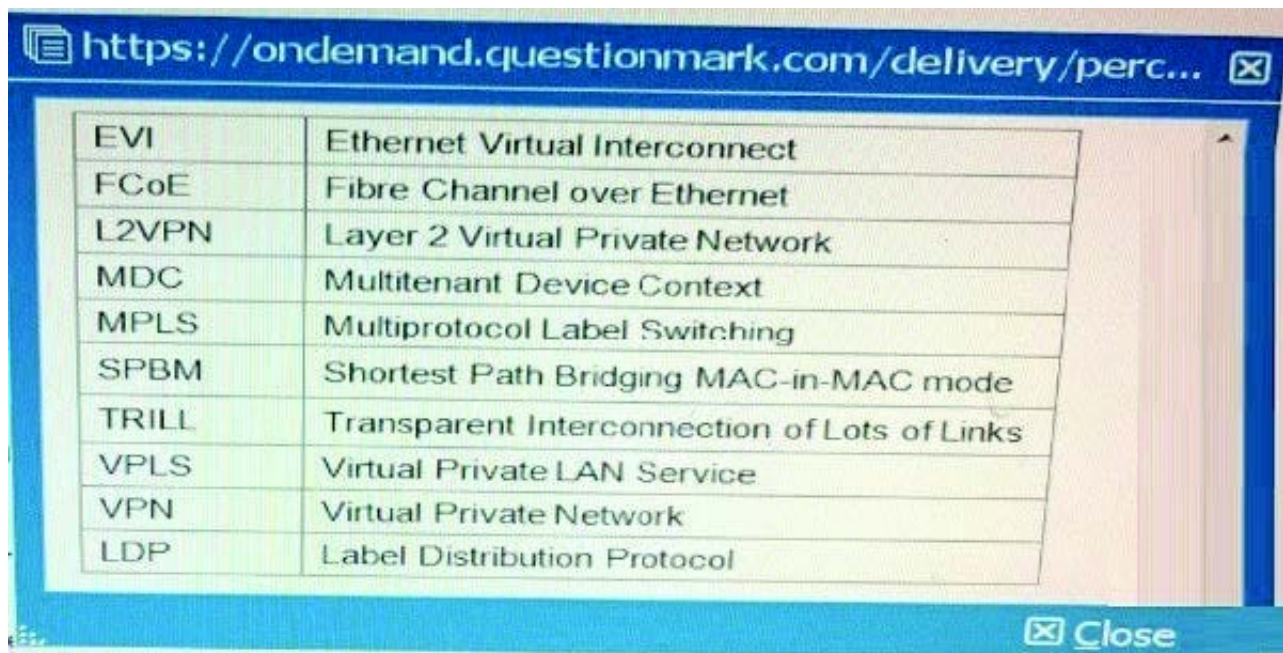
An HP VAN SDN Controller runs the HP Network Protector SDN Application. The application has programmed an HP Switch with flows that output the service insertion tunnel. How does the switch forward packets matching these flows to the controller?

- A. Encapsulated in a GRE tunnel
- B. Encapsulated in OpenFlow packets and transmitted over the auxiliary connection
- C. Encapsulated in an IPSec tunnel
- D. Encapsulated in OpenFlow packets and transmitted in the controller VLAN

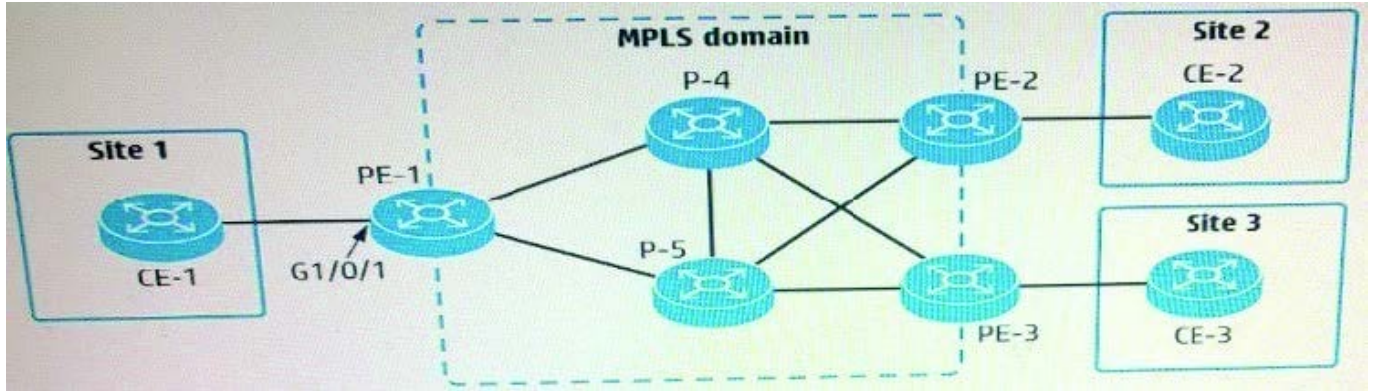
Correct Answer: D

QUESTION 8

Table of Acronyms Refer to the exhibit.



EVI	Ethernet Virtual Interconnect
FCoE	Fibre Channel over Ethernet
L2VPN	Layer 2 Virtual Private Network
MDC	Multitenant Device Context
MPLS	Multiprotocol Label Switching
SPBM	Shortest Path Bridging MAC-in-MAC mode
TRILL	Transparent Interconnection of Lots of Links
VPLS	Virtual Private LAN Service
VPN	Virtual Private Network
LDP	Label Distribution Protocol



An administrator wants to establish a remote LDP session between PE-1 (loopback IP address 10.0.0.1) and PE-2 (loopback IP address; 10.0.0.2). What is required to do this?

- A. Both PE-1 and PE-2 have a VPN instance that is defined with the same route distinguisher (RD)
- B. Both PE-1 and PE-2 advertise the same label for their loopback IP address
- C. Both PE-1 and PE-2 use ordered mode for LDP.
- D. Both PE-1 and PE-2 advertise their loopback IP address with OSPF and with LDP.

Correct Answer: D

QUESTION 9

Table of Acronyms

https://ondemand.questionmark.com/delivery/perce... Close

EVI	Ethernet Virtual Interconnect
FCoE	Fibre Channel over Ethernet
L2VPN	Layer 2 Virtual Private Network
MDC	Multitenant Device Context
MPLS	Multiprotocol Label Switching
SPBM	Shortest Path Bridging MAC-in-MAC mode
TRILL	Transparent Interconnection of Lots of Links
VPLS	Virtual Private LAN Service
VPN	Virtual Private Network
LDP	Label Distribution Protocol

Close

An administrator has configured an HP Comware switch to support FCoE in Fibre Channel Forwarder (FCF) mode. A switch interface, ten1/0/1, connects to a server FC host bus adapter (HBA). The HBA should send storage traffic in VSAN 2, which is associated with VLAN 20.

How should the administrator assign FC traffic for this HBA to VSAN 2?

- A. By binding a VFC interface to ten1/0/1 and specifying VSAN 2 as the VFC interface trunk VSAN
- B. By accessing the VLAN 20 configuration view and specifying ten1/0/1 as a member port of the VLAN
- C. By configuring ten1/0/1 as an F-mode FC port and specifying VSAN2 as the port access VSAN
- D. By accessing the VSAN 2 configuration view and adding ten1/0/1 as a trunk port

Correct Answer: C

QUESTION 10

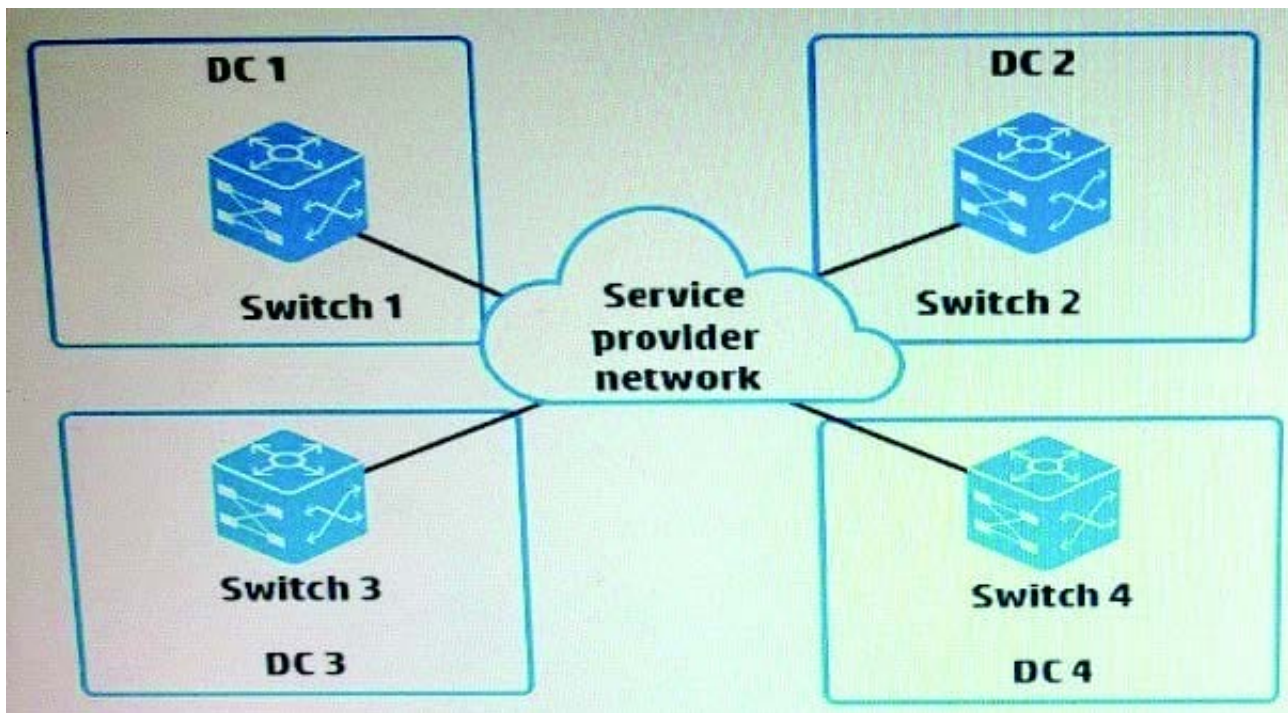
Table of Acronyms

https://ondemand.questionmark.com/delivery/perce... [X]

EVI	Ethernet Virtual Interconnect
FCoE	Fibre Channel over Ethernet
L2VPN	Layer 2 Virtual Private Network
MDC	Multitenant Device Context
MPLS	Multiprotocol Label Switching
SPBM	Shortest Path Bridging MAC-in-MAC mode
TRILL	Transparent Interconnection of Lots of Links
VPLS	Virtual Private LAN Service
VPN	Virtual Private Network
LDP	Label Distribution Protocol

[X] Close

Refer to the exhibit



An administrator wants to connect four data centers using HP EVI. What is the correct setup for the EVI tunnel interfaces?

- A. Three EVI tunnel interfaces on each EVI edge device-one EVI tunnel interface is required for each GRE tunnel in the mesh
- B. One EVI tunnel interface on Switch 1, which will be configured as the ENDP server, and no interfaces on the other switches

C. Three EVI tunnel interfaces on Switch 1, which will act as the hub, and one EVI tunnel interface each on the other switches

D. One EVI tunnel interface on each EVI edge device--the devices automatically establish GRE tunnels between these interfaces

Correct Answer: C

QUESTION 11

Refer to the exhibit.

```
zoneset name zoneset1
  member 1
  member 2
  active
zoneset name zoneset2
  member 3
  member 4

zone name 1
  member zone-alias pwwN1
  member zone-alias pwwN2
  member zone-alias pwwN3
  member zone-alias pwwN4

zone name 2
  member zone-alias pwwN5
  member zone-alias pwwN6
  member zone-alias pwwN7

zone name 3
  member zone-alias pwwN8
  member zone-alias pwwN9
  member zone-alias pwwN10

zone name 4
  member zone-alias pwwN11
  member zone-alias pwwN12
  member zone-alias pwwN13
```

The exhibit shows the Fibre Channel (FQ zones that are members of zonesets on an HP Comware switch. How does this zoning affect the FC fabric operation?

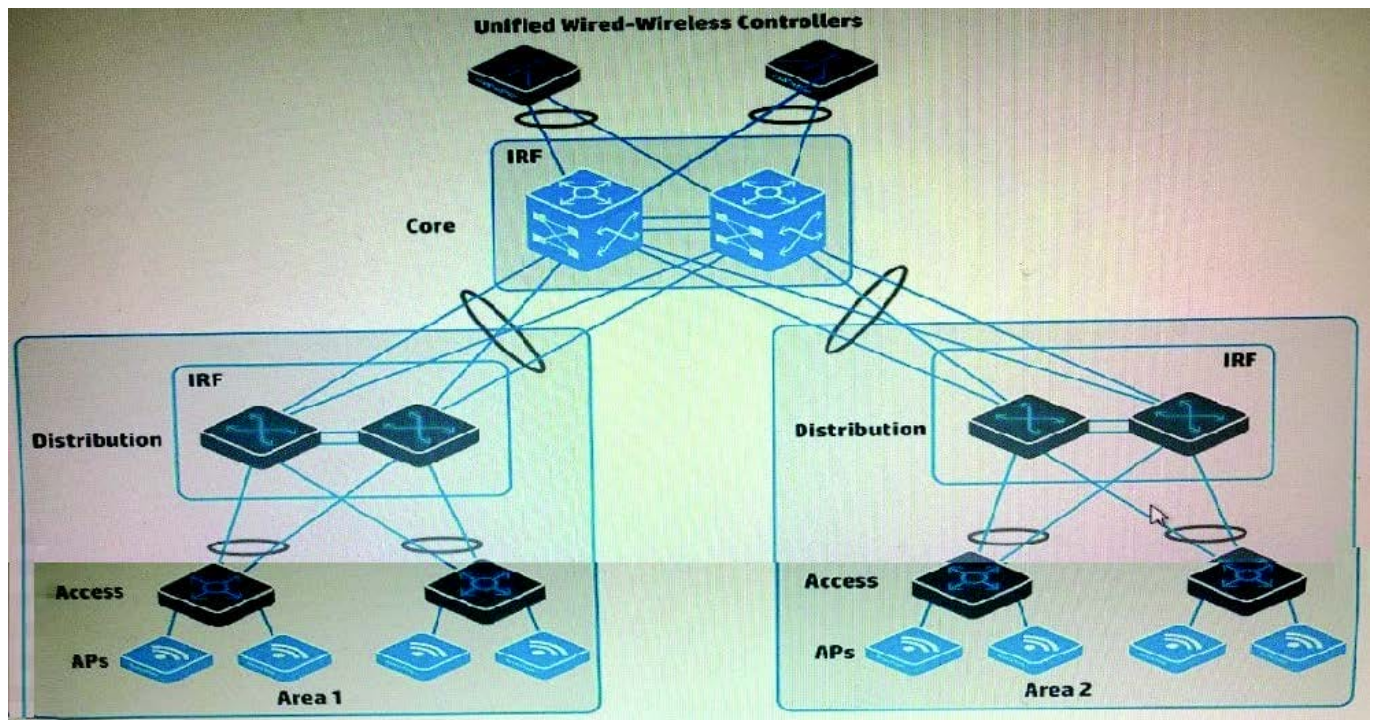
A. Host bus adapter (HBA) pWWNs in zoneset 1 belong to VSAN 1, which is currently active. HBA pWWNs in zoneset 2 belong to VSAN 2, which is inactive

- B. Server pWVNs in zone 1 can discover targets pWWNs in zone 2. Server pWWNs in zone 3 can discover target pWWNs in zone 4.
- C. A sender pWWN in zone 1 can discover target pWWNs in zone 1. A server pWWN in zone 2 can discover target pWWNs in zone 2.
- D. The switch matches a host bus adapter (HBA) pWWN to entries in zone 1 to determine whether an HBA can connect to a port. If it does not find a match, it checks zone 2.

Correct Answer: D

QUESTION 12

Refer to the exhibit.



A company has HP APs that are managed by the two Unified Wired-Wireless controllers. Wireless users use Wi-Fi Protected access (WPA2) and authenticate with 802.1X to HP Access Manager (UAM). The SSID uses centralized forwarding. Users need to be able to roam seamlessly from area 1 to area 2.

Which step helps to meet these needs?

- A. Configure local forwarding for the SSID on both controllers.
- B. Configure controller 1 as a backup controller for APs in area; configure controller 2 as a backup controller for APs in area1.
- C. Change the security mode to preshared key (PSK) and enable opportunistic key change (also called "fast roaming").

D. Set up enable a roam that includes both controllers.

Correct Answer: A