

100% Money Back
Guarantee

Vendor: IBM

Exam Code: IBMSPPSSMBPDM

Exam Name: IBM SPSS Modeler Business Partner Data
Mining Associate

Version: Demo

QUESTION NO: 1

How many phases are in the CRISP-DM Process Methodology?

- A. Four
- B. Five
- C. Six
- D. Seven

Answer: C

QUESTION NO: 2

True or false: the CRISP-DM Process Methodology is a linear process.

- A. True
- B. False

Answer: B

QUESTION NO: 3

Which node is used to read data from a comma delimited text file?

- A. Var. File
- B. Data Collection
- C. Fixed File
- D. Statistics File

Answer: A

QUESTION NO: 4

Examine the Data Audit output shown below.

Field	Measurement	Outliers	Extremes	Action	Impute Mi...	Method	% Complete	Valid
ACCOM	Nominal	--	--		Never	Fixed	100	
COUNTRY	Nominal	--	--		Never	Fixed	100	
CUSTID	Nominal	--	--		Never	Fixed	100	
DIST_TO_BE...	Continuous	1	0	None	Never	Fixed	100	
DOB	Nominal	--	--		Never	Fixed	100	
GENDER	Nominal	--	--		Never	Fixed	98.681	
HOLCODE	Nominal	--	--		Never	Fixed	100	
HOLCOST	Continuous	9	1	Discard	Never	Fixed	97.889	
NAME	Nominal	--	--		Never	Fixed	100	
NIGHTS	Continuous	0	0	Nullify	Never	Fixed	100	
NUMPARTY	Continuous	6	0	None	Never	Fixed	100	
POOL	Flag	--	--		Never	Fixed	100	
REGION	Nominal	--	--		Never	Fixed	100	
TRAVDATE	Nominal	--	--		Never	Fixed	100	

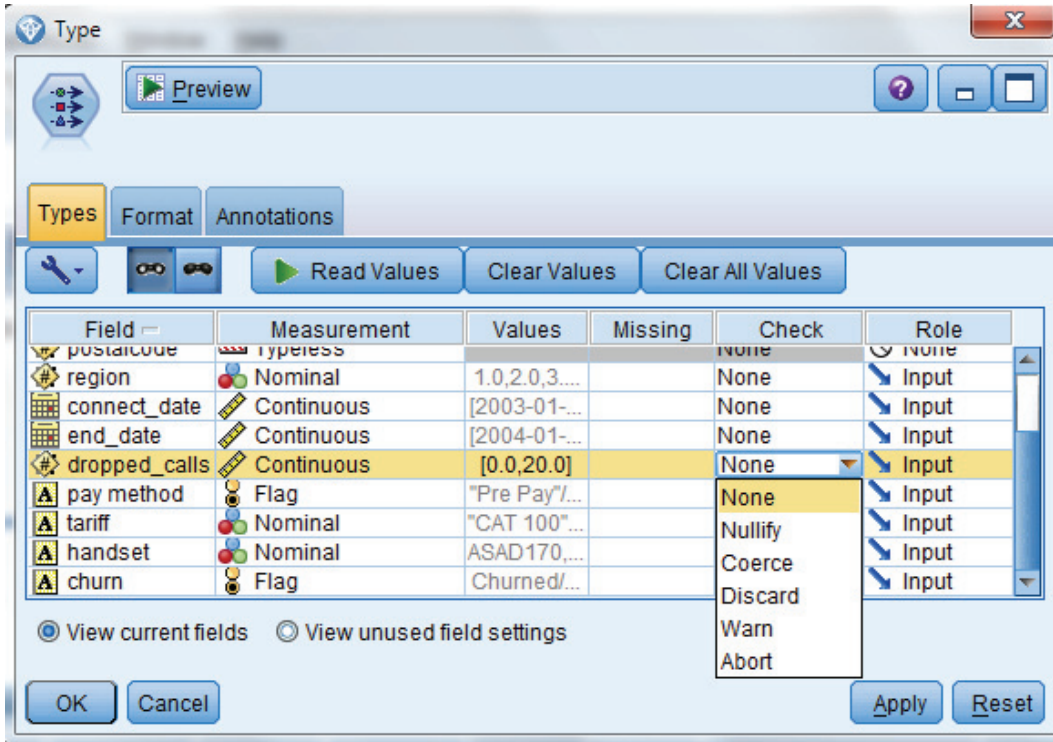
What action will occur in a generated Outlier & Extreme Supernode for HOLCOST?

- A. Nine records will be set to the system missing (null) value for HOLCOST.
- B. Ten records will be deleted.
- C. Ten records will be set to the system missing (null) value for HOLCOST.
- D. Nine records will be deleted.

Answer: B

QUESTION NO: 5

Given the Type node shown below,



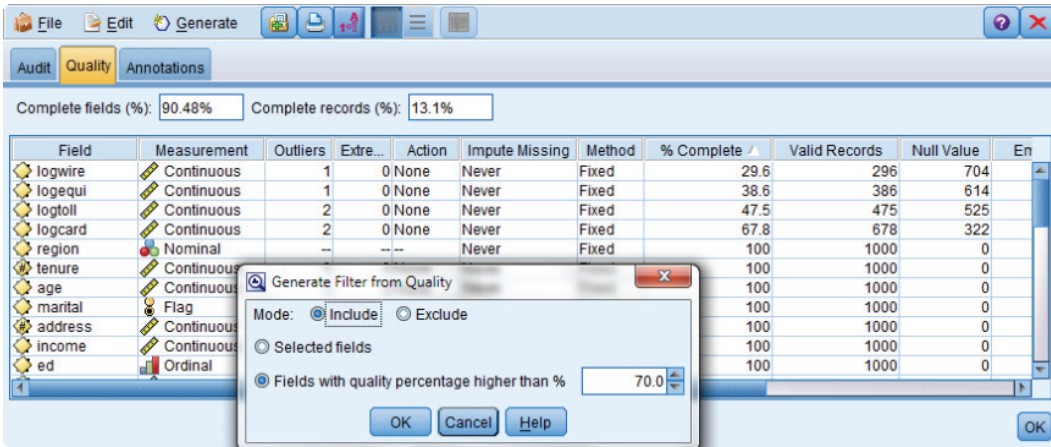
what specifications are necessary to change all values outside the range 1 to 15 in field dropped_calls to the undefined (\$null\$) value?

- A. Pass Values and Check action Nullify
- B. Specify Values Lower 1 and Upper 15 and Check action Nullify
- C. Specify Values Lower 1 and Upper 15 and Check action Discard
- D. Read Values and Check action Warn

Answer: B

QUESTION NO: 6

True or false: given the information in the Data Audit Quality table below,



the generated Filter node will exclude only the fields logwire, logequi, logtoll, and logcard.

- A. True
- B. False

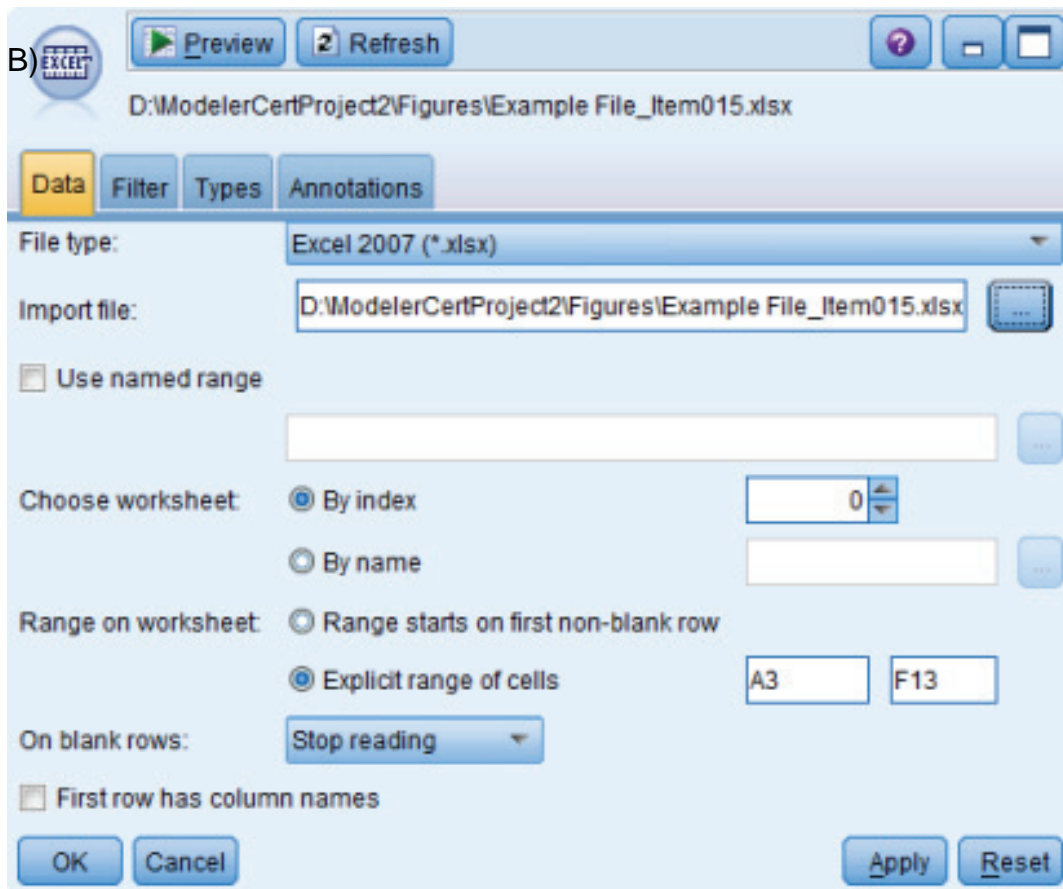
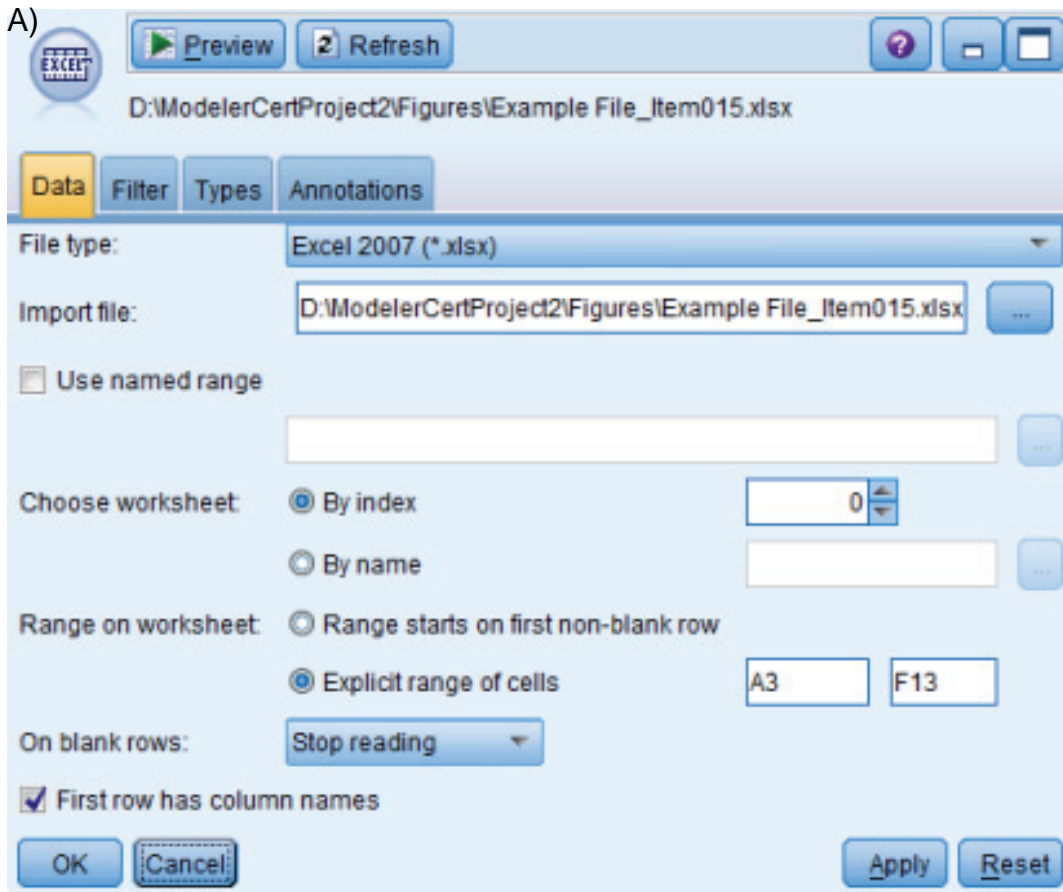
Answer: A

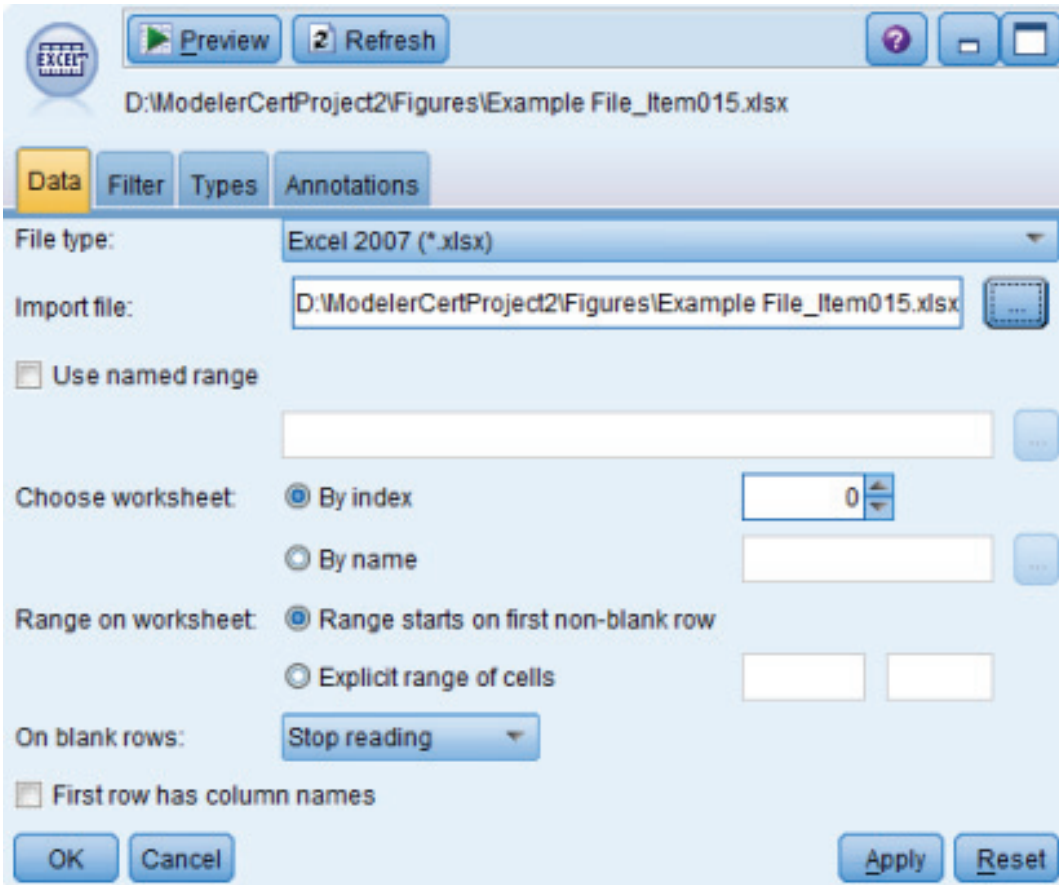
QUESTION NO: 7

To correctly read the Excel® file shown below,

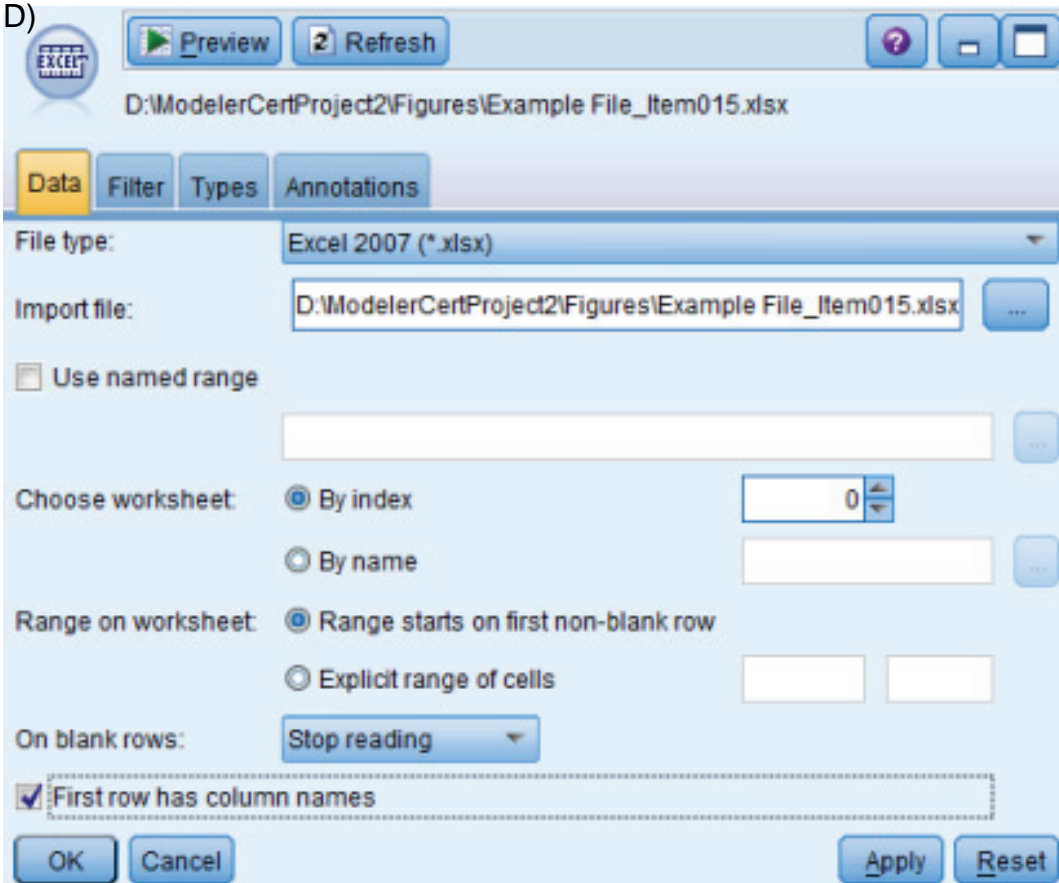
A	B	C	D	E	F
Basic Customer Information: Example Layout					
CUSTOMER_ID	GENDER	CREDITLIMIT	ZODIAC	E-MAIL ADDRESS	ZIP
723	F	9026		1 name7502@tnet.fr	1818BO
724	M	5223		3 name25485@wwmail.org	1132DG
725	F	668		8 name15543@wwmail.de	1803YT
726	M	8302		6 name28335@zigzag.be	1205WR
727	F	997		8 name5354@tnet.jp	1711ON
728	M	1955		3 name20637@wwmail.es	1055FG
729	F	6898		5 name20636@wwmail.es	1254MR
730	F	6488		11 name10414@tnet.inc	1723DG
730	F	6488		11 name10414@tnet.inc	1723DG
730	F	6488		11 name10414@tnet.inc	1723DG

which dialog box settings are appropriate?





D)



- A. Exhibit A
- B. Exhibit B
- C. Exhibit C
- D. Exhibit D

Answer: D

QUESTION NO: 8

True or false: auto checking for invalid values can be done on the Type tab in any Source node.

- A. True
- B. False

Answer: A

QUESTION NO: 9

Which node can be used to impute (estimate) missing values?

- A. Data Audit node
- B. Balance node
- C. Filler node
- D. Reclassify node

Answer: A

To Read the [Whole Q&As](#), please purchase the [Complete Version](#) from [Our website](#).

Trying our product !



- ★ **100%** Guaranteed Success
- ★ **100%** Money Back Guarantee
- ★ **365 Days** Free Update
- ★ **Instant Download** After Purchase
- ★ **24x7** Customer Support
- ★ Average **99.9%** Success Rate
- ★ More than **69,000** Satisfied Customers Worldwide
- ★ Multi-Platform capabilities - **Windows, Mac, Android, iPhone, iPod, iPad, Kindle**

Need Help

Please provide as much detail as possible so we can best assist you.

To update a previously submitted ticket:



 One Year Free Update <p>Free update is available within One Year after your purchase. After One Year, you will get 50% discounts for updating. And we are proud to boast a 24/7 efficient Customer Support system via Email.</p>	 Money Back Guarantee <p>To ensure that you are spending on quality products, we provide 100% money back guarantee for 30 days from the date of purchase.</p>	 Security & Privacy <p>We respect customer privacy. We use McAfee's security service to provide you with utmost security for your personal information & peace of mind.</p>
-----------------------------------------------------------------------------------------------------------------------------------------------------------------------------------------------------------------------------------------------------------------------------------------------------------------------------	---------------------------------------------------------------------------------------------------------------------------------------------------------------------------------------------------------------------------------------------------------	--------------------------------------------------------------------------------------------------------------------------------------------------------------------------------------------------------------------------------------------------------------------------------

[Guarantee & Policy](#) | [Privacy & Policy](#) | [Terms & Conditions](#)

Any charges made through this site will appear as Global Simulators Limited.

All trademarks are the property of their respective owners.

Copyright © 2004-2015, All Rights Reserved.