

**100%** Money Back  
**Guarantee**

**Vendor:**Juniper

**Exam Code:**JN0-1302

**Exam Name:**Data Center Design Specialist (JNCDS-DC)

**Version:**Demo

### QUESTION 1

You must implement Layer 4 security services between VMs that are hosted on the same server. You require a low footprint with Docker support.

In this scenario, which Juniper Networks product would you deploy?

- A. vSRX
- B. cRPD
- C. cSRX
- D. QFX

Correct Answer: C

---

### QUESTION 2

You are asked to design a DCI that offers policy control, active/active multihoming with load balancing, and minimizes flooding of BUM traffic.

Which DCI implementation satisfies these requirements?

- A. EVPN
- B. circuit cross-connect
- C. BGP Layer 2 VPN
- D. VPLS LAG

Correct Answer: A

---

### QUESTION 3

You are designing a new data center that will be built using an IP fabric. One of your security requirements is that the gateway for all of your VLANs must reside on the data center SRX firewalls.

Which IP fabric architecture will satisfy this requirement?

- A. centrally routed overlay
- B. server routed overlay
- C. edge routed overlay
- D. bridged overlay

Correct Answer: C

---

#### QUESTION 4

You are implementing a new data center and need to plan to connect it to your existing data center. You have the requirement for active/active forwarding to enable load balancing and reduce failure times.

Which two technologies should be evaluated for this design? (Choose two.)

- A. point-to-point links
- B. Layer 2 VPN
- C. VPLS
- D. EVPN

Correct Answer: CD

---

#### QUESTION 5

You are designing a large IP fabric and must determine if you should use IBGP or EBGP to signal your underlay.

Which statement is correct in this scenario?

- A. EBGP will require that an IGP is also configured for load balancing.
- B. EBGP will require a full mesh on all devices for load balancing.
- C. EBGP will require that you include the add-path feature for load balancing.
- D. EBGP will require that you include the multipath and multiple-as features for load balancing.

Correct Answer: C

---

#### QUESTION 6

You are designing an EVPN/VXLAN overlay network for your data center. You are planning on reusing some of your existing devices that do not support VXLAN routing.

Which gateway model should be deployed to support this architecture?

- A. spine gateway
- B. leaf gateway
- C. server based gateway
- D. underlay gateway

Correct Answer: A

---

### QUESTION 7

Which two Junos components does cRPD contain? (Choose two.)

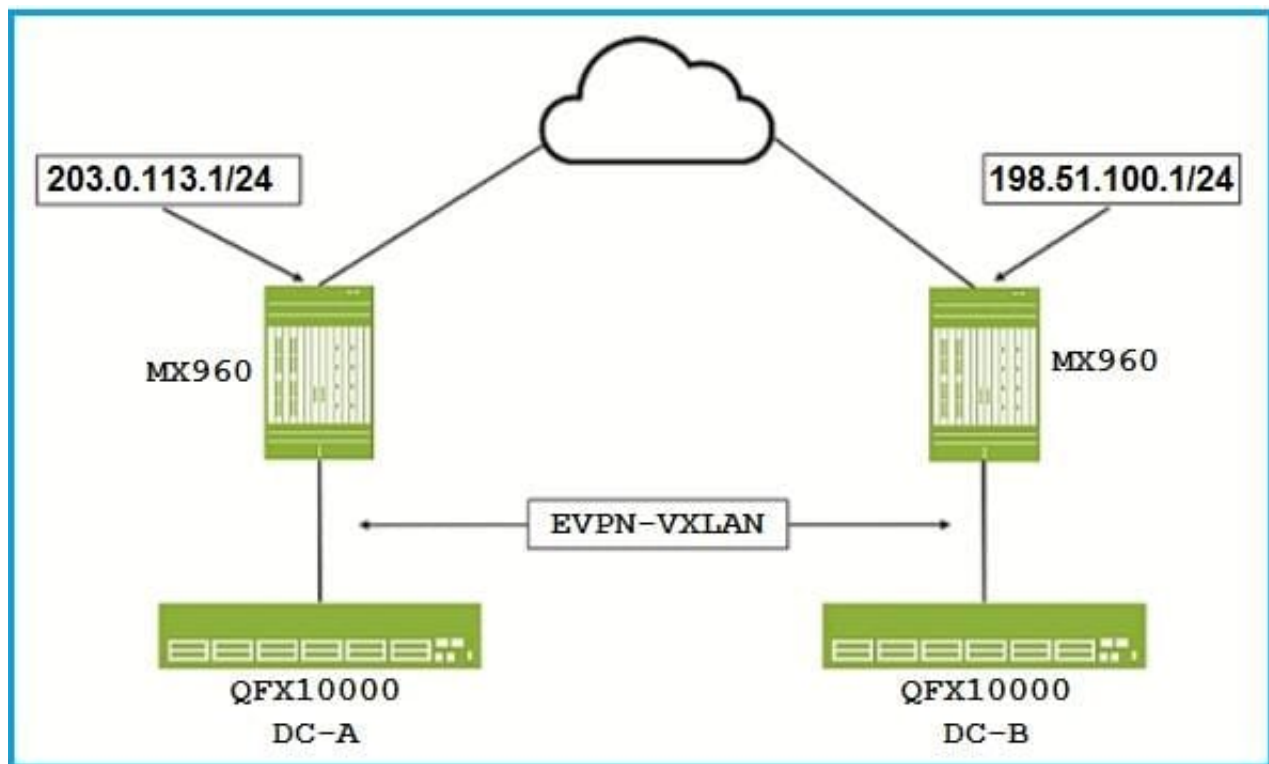
- A. Kubernetes
- B. RIB
- C. Kernel
- D. MGD

Correct Answer: BD

---

### QUESTION 8

Click the Exhibit button.



You are designing a Data Center Interconnect to transport VXLAN traffic between DC-A and DC-B.

Which two technologies will allow the MX Series routers to transport the VXLAN packets over the WAN, as shown in the exhibit? (Choose two.)

- A. Layer 2 VPN
- B. Layer 3 VPN
- C. VPLS
- D. IP routing

Correct Answer: BC

---

#### QUESTION 9

Within a customer's data center, one departmental server is transmitting all of its network traffic marked with an IP precedence value of 6. The ingress switch must change this precedence before forwarding it to the rest of the network.

Which CoS feature would be used to accomplish this task?

- A. multifield classification
- B. rewrite rules
- C. class-based forwarding
- D. behavior aggregate classification

Correct Answer: B

---

#### QUESTION 10

You want to encapsulate Layer 2 frames for transport across a Layer 3 network.

Which three methods are supported by Juniper Networks to accomplish this task? (Choose three.)

- A. EVPN
- B. VXLAN
- C. MPLS over GRE
- D. Layer 3 VPN
- E. MPLS over UDP

Correct Answer: ABC

---

#### QUESTION 11

According to Juniper Networks, what are two recommendations for implementing data center security? (Choose two.)

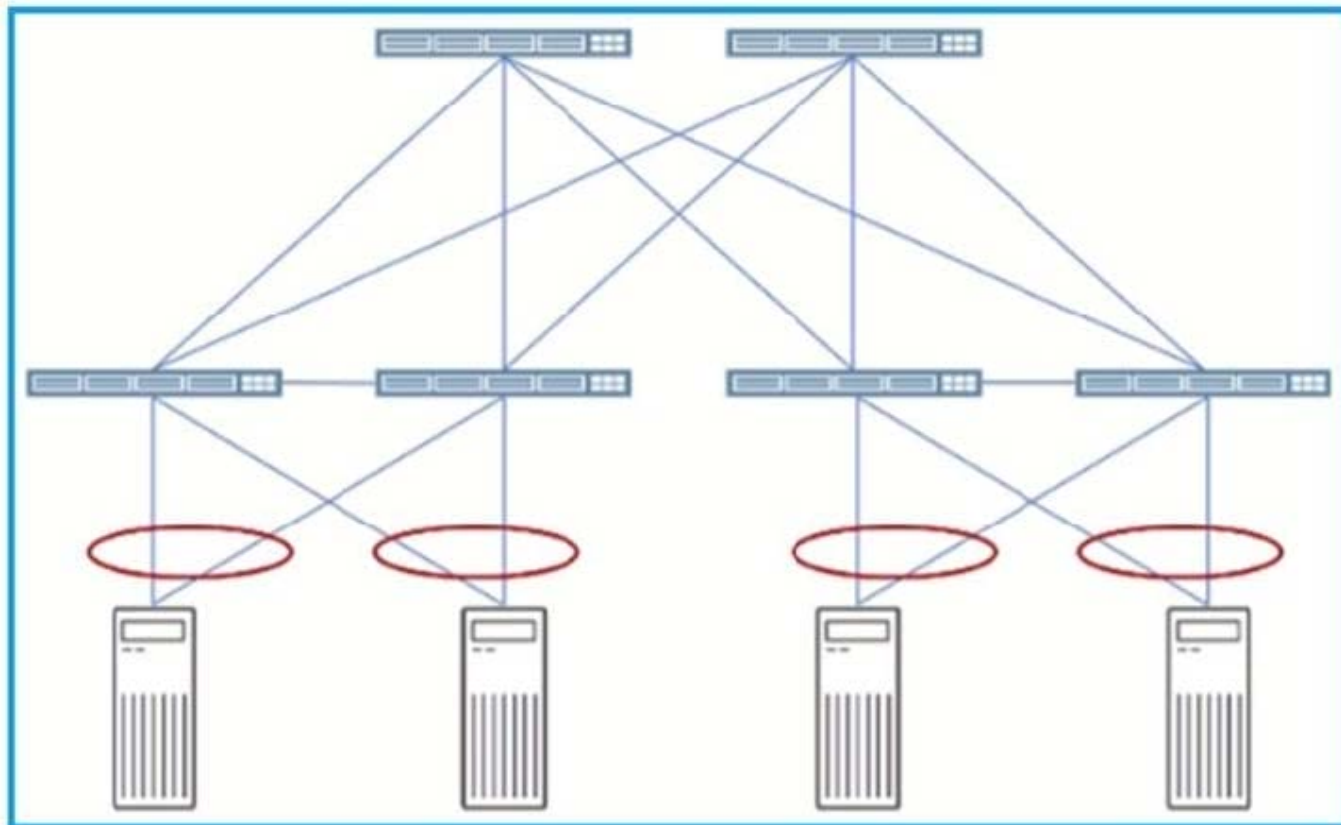
- A. Perimeter security in a data center is normally performed on virtual devices.
- B. Perimeter security in a data center is normally performed on physical devices.
- C. DDoS protection is implemented at the perimeter of the data center.
- D. DDoS protection is implemented at the core of the data center.

Correct Answer: BC

---

## QUESTION 12

Click the Exhibit button.



You need to ensure that no single point of failure exists in a new data center that will be deployed. Referring to the exhibit, which two technologies will accomplish this requirement? (Choose two.)

- A. Virtual Chassis
- B. LLDP
- C. MC-LAG
- D. LAG

Correct Answer: AC