

**100%** Money Back  
**Guarantee**

**Vendor:** Motorola Solutions

**Exam Code:** MSC-122

**Exam Name:** Deploy WLAN Solutions

**Version:** Demo

**QUESTION: 1**

If a Motorola access point induces a 50 mW RF signal onto a 3 dBi antenna, what will be the resulting EIRP of the transmitted signal?

- A. 0 dBm
- B. 3 dBm
- C. 20 dBm
- D. 50 mW
- E. 50 dBm

**Answer: C**

**QUESTION: 2**

Which of the following statements is NOT considered to be a best practice with respect to the wired backbone serving the WLAN?

- A. When performing manual configuration of a point-to-point Ethernet link, ensure that both the speed and the duplex mode settings on the two ports match.
- B. When creating a link between Ethernet 10/100BASE-T or 10/100/1000BASE-T ports, enable (or accept the default of) auto-negotiation on both ports.
- C. When creating a link between Gigabit Ethernet fiber ports, enable (or accept the default of) auto-negotiation.
- D. When creating a link between Gigabit Ethernet fiber ports, disable auto-negotiation on both ports.

**Answer: D**

**QUESTION: 3**

You are deploying a new system and are creating the RF Domain(s). Which of the following options would you use to group the APs into the same domain?

- A. By VLAN, where all APs are on the same subnet.
- B. By site, which can be a location where the group of installed APs can hear each other's beacons.
- C. By name, so they can be easily sorted in the tree view of the controller.
- D. By deployment phase, so configurations can be accidentally pushed to newly installed APs.

**Answer: A**

**QUESTION: 4**

You are performing a physical site survey of a new WiNG 5 WLAN deployment. Which of the following is CORRECT?

- A. The Signal to Noise Ratio (SNR) is a critical measurement that needs to be addressed.
- B. It is acceptable that you use any RF infrastructure device (Access Point) to perform the site survey test.
- C. Using default settings of a site survey application will provide an adequate site survey result.
- D. Customer throughput requirements are the only criteria for which need to be surveyed.

**Answer: B**

**QUESTION: 5**

You have just conducted a throughput test using iPerf on a WLAN that shows a PHY signaling rate of 54 Mbps, however the average throughput rate shown in iPerf is only 23.5 Mbps. What is the most likely explanation for this condition?

- A. This throughput speed is considered nominal.
- B. This throughput rate could indicate a mismatch between Wi-Fi confidentiality algorithms.
- C. This throughput rate indicates excessive user activity.
- D. This throughput rate indicates excessive out-of-band interference such as nearby cell phone towers.

**Answer: A**

**QUESTION: 6**

During a recent throughput analysis test of your 802.11g network, you discovered that performance is poor in comparison to previous baselines. You discover that this is the result of 802.11b stations becoming associated with your access point. What option could you implement to eliminate 802.11b clients from attaching to your network?

- A. Implement protection mechanisms
- B. Make 24 mbps a required data rate
- C. Implement RTS/CTS at the access point
- D. Change the channel used for the network

**Answer: B**

**QUESTION: 7**

Your customer has requested that during the upcoming 802.11g to 802.11n upgrade deployment you enable 40 MHz channels on 1, 6, and 11 of the 2.4 GHz ISM band. You respond by saying that there is not enough spectrum to allow 40 MHz channels centered on 1, 6, and 11. How wide are standard 802.11g (OFDM) channels?

- A. 20 MHz
- B. 83.5 MHz
- C. 5 MHz
- D. 11 MHz
- E. 22 MHz

**Answer: A**

**QUESTION: 8**

You have an access point that requires PoE connected to a switch with a 150 meter 10 BASE-T CAT 5 cable. During testing numerous problems with both data transmission and intermittent power occurs. Which of the following is most likely the cause?

- A. The cable should be CAT 6
- B. There is a duplex mismatch
- C. The cable should be 100 BASE-T
- D. The cable is too long

**Answer: D**

**QUESTION: 9**

Which of the following APs does not support adaptive mode?

- A. AP7131
- B. AP6532
- C. AP650
- D. AP6521

**Answer: A**

**QUESTION: 10**

Which of the following is the primary method of collision avoidance in an 802.11 CSMA/CA WLAN?

- A. Backoff Timer
- B. Carrier Sense
- C. Contention Window
- D. Enhanced Distributed Channel Access (EDCA)
- E. Distributed Coordination Function Interframe Spaces (DIFS)

**Answer:** B

**QUESTION:** 11

You are designing a WLAN that will support multiple BSS IDs. One of the characteristics you need to take into consideration is that each BSS transmits a beacon every 100 ms. How many BSSs can be enabled on the following Motorola access points under WiNG 5: AP7131, AP650, AP6532?

- A. 2, one per radio
- B. 1 per AP, it is shared between the radios to provide seamless roaming
- C. 8, four per radio
- D. 16, eight per radio

**Answer:** D

**QUESTION:** 12

You are deploying a new WLAN within the WiNG 5 architecture. Which of the following is the only UNSUPPORTED Motorola access point/port?

- A. AP-300
- B. AP-650
- C. AP-5131
- D. AP-7131

**Answer:** C

**QUESTION:** 13

Your customer has requested that you configure unique VLANs for voice, normal user data with 802.1X security, guest access, and management traffic. Which of the following VLAN modes can support this request?

- A. Native Mode
- B. Access Mode
- C. Trunk Mode
- D. Aggregation Mode
- E. Encapsulation Mode

**Answer:** C

**QUESTION:** 14

Which of the following statements regarding the configuration of Motorola RFS controllers is TRUE?

- A. ADSP can be used to push CLI profiles to APs and controllers.
- B. LANPlanner can be used to push CLI profiles to APs and controllers.
- C. RFMS can be used to perform predictive site surveys using an RFS controller
- D. WiNG 5 can be used to perform manual site surveys using an RFS controller
- E. CLI can be used to perform both manual and predictive site surveys using an RFS controller.

**Answer:** A

**QUESTION:** 15

You have configured a Motorola RFS controller using WiNG 5 and have attempted to adopt a group of APs using L2 adoption but the adoption is not successful. You have confirmed the following:

- All of the APs have an Ethernet connection to the same LAN segment as the controller
- Spanning Tree Protocol (STP) has been disabled on the APs next hop switch port
- Intermediate firewalls are not blocking EtherType 0x8783

Given this scenario, which of the following is the most likely cause of the unsuccessful AP adoption?

- A. DHCP option 192 has not been defined on the DHCP server
- B. A local VLAN has been configured on both the controller and the APs
- C. The APs GE ports have been configured for an 802.1q-tagged native VLAN
- D. The APs GE ports have been configured for an 802.1q-untagged native VLAN

**Answer:** C

**QUESTION:** 16

Which of the following are methods that may be used to perform the initial configuration of an RFS controller using WiNG 5 (select THREE)?

- A. Static configuration using SNMP
- B. Automated self-configuration using Smart RF
- C. Manual configuration using GUI
- D. Manual configuration using CLI
- E. Manual configuration using RFS Activator application
- F. Automated configuration using wizard

**Answer:** C, D, F

**QUESTION:** 17

You are deploying a new WiNG 5 WLAN system and the client will have several different types of access points, Independent AP licenses within WiNG 5 controllers apply to all of the following access points, EXCEPT:

- A. AP-7131
- B. AP-650
- C. AP-6511
- D. AP-300

**Answer:** D

**QUESTION:** 18

Extended VLANs are configured by marking a VLAN on an AP or RFS controller as extended. Which of the following are methods by which extended VLAN configurations may be pushed to access points (select TWO)?

- A. DHCP options
- B. RF domain profile
- C. Policy refresh
- D. Device profiles
- E. Manual overrides
- F. RF Domain updates

**Answer:** D, E

**QUESTION:** 19

Which of the following interfaces are recommended to be used for local management of an RFS6000 or RFS7000?

- A. Gigabyte Ethernet (GE)
- B. Management Ethernet (ME)
- C. Uplink (UP)
- D. Universal Serial Bus (USB)
- E. Express

**Answer:** B

**QUESTION:** 20

You have configured a Motorola RFS controller with multiple VLANs. You have configured the native VLAN as VLAN 6, management traffic to use VLAN 8, voice traffic to flow over VLAN 18, and guest Internet access as VLAN 21. On which VLAN will untagged frames be placed after they arrive at the controller?

- A. VLAN 1
- B. VLAN 6
- C. VLAN 8
- D. VLAN 18
- E. VLAN 21

**Answer:** B

**QUESTION:** 21

During the deployment of a WLAN, the use of specialized helper applications is indispensable. These hardware components and computer programs allow the deployment engineer to visualize the invisible energy patterns that compose the RF channels. Which of the following best describes a specialized application that allows the deployment engineer to gather OSI Model Layer 1 and Layer 2 activity, in real time, and model the combined effects, superimposed on a representative background image?

- A. Protocol Analyzer
- B. Spectrum Analyzer
- C. WLAN Discovery tool
- D. Manual Site Survey tool
- E. Predictive Site Survey tool

**Answer:** D



**QUESTION: 22**

Which of the following interfaces found on an RFS4000 or RFS6000 Controller can be used to supply Power over Ethernet to directly attached APs?

- A. Gigabyte Ethernet (GE)
- B. Uplink (UP)
- C. Management Ethernet (ME)
- D. Universal Serial Bus (USB)
- E. Express

**Answer: A**

**QUESTION: 23**

Which of the following interfaces are recommended to connect an RFS4000 or RFS6000 to the local network?

- A. Management Ethernet (ME)
- B. Gigabyte Ethernet (GE)
- C. Uplink (UP)
- D. Universal Serial Bus (USB)
- E. Express

**Answer: C**

**QUESTION: 24**

In which of the following modes does an RFS controller using WiNG 5 operate (select TWO)?

- A. Hub mode
- B. Bridge mode
- C. Switch mode
- D. Router mode
- E. Repeater mode
- F. Controller mode

**Answer: B, D**

**QUESTION: 25**

You are deploying a WiNG 5 system and need to visualize Layer 1 activity only. Which of the following tools would allow you to do this?

- A. Protocol Analyzer
- B. Spectrum Analyzer
- C. WLAN Discovery tool
- D. Predictive Site Survey tool
- E. Manual Site Survey tool

**Answer:** B

**QUESTION:** 26

You are monitoring a wireless client on a WLAN and are using a 2.4GHz radio to capture a wireless trace. When using the sniffer-redirect option on Motorola AP without off-channel scanning, how many simultaneous 20Mhz channels can be redirected by the AP?

- A. 1
- B. 3
- C. 6
- D. 11

**Answer:** A

**QUESTION:** 27

Which of the following terms are used to describe Motorola AP-650s (select TWO)?

- A. FatAP
- B. DependentAP
- C. Non-Site survivable AP
- D. Site Survivable AP
- E. Independent AP

**Answer:** B, C

**QUESTION:** 28

When mounting an antenna on a metal wall, what special considerations do you have to take into account regarding RF propagation (select TWO)?

- A. Length of antenna cable
- B. The type of antenna to be used
- C. Type of screws to be used
- D. The distance the antenna is from the wall
- E. Mounting height of the antenna

**Answer:** D, E

**QUESTION:** 29

Which of the following is the single biggest security vulnerability evident in the image below?

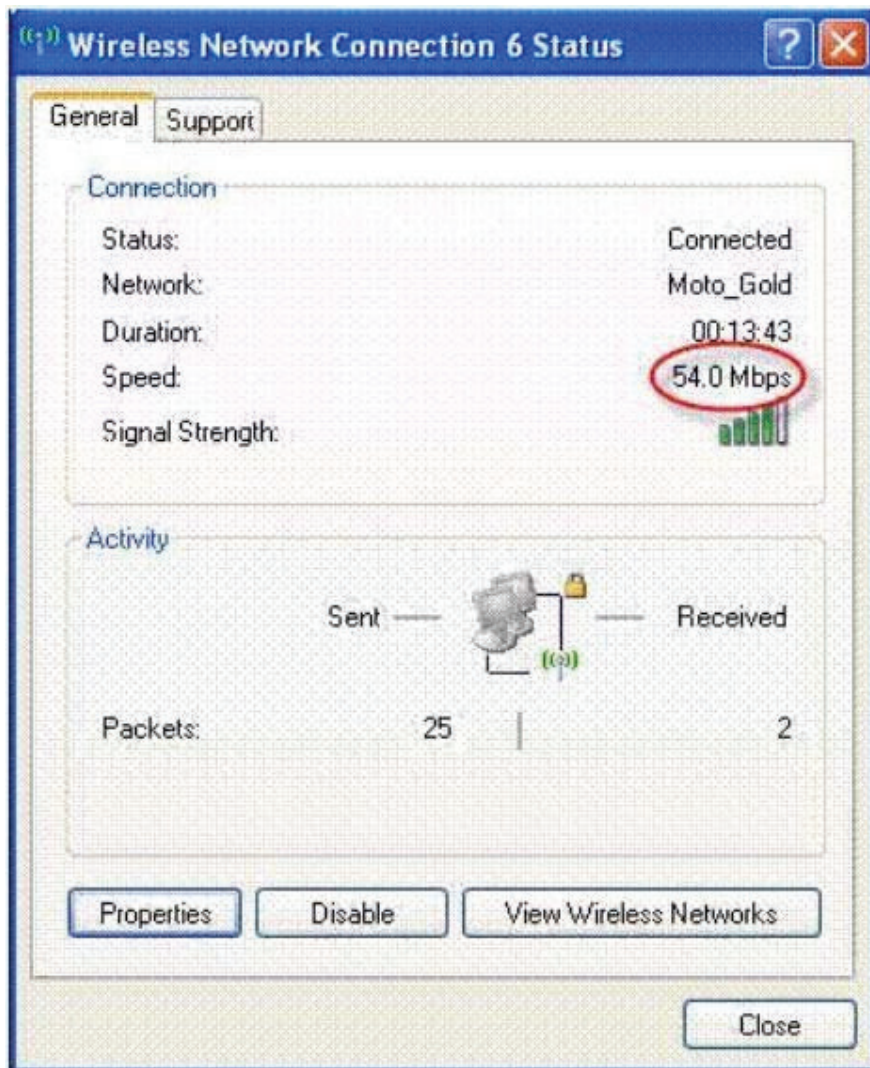
NETGEAR:6e:32:4a [a,b,g,n]	WLAN1g	11	None	-74	1,697	123,567	11/26/10 10:56:40 A...	WEP
NETGEAR:a4:66:3c [a]	WLAN1a	36	None	-74	548	52,157	11/26/10 10:56:47 A...	WPA - PSK TKIP
Motorola:7d:f4:20 [a,n]	Nickel	149	Upper	-71	562	124,701	11/26/10 10:56:30 A...	WPA2 - PSK CCMP
Motorola:7d:f4:21 [a,n]	Zinc	149	Upper	-71	566	124,453	11/26/10 10:56:31 A...	WPA2 - PSK CCMP
Motorola:7e:08:d0 [b,g,n]	Visitors	11	None	-86	26,377	2,512,193	11/26/10 10:56:44 A...	None
Motorola:7e:08:d1 [b,g,n]	Chrome	11	None	-86	497	95,252	11/26/10 10:56:42 A...	WPA2 - PSK CCMP
Motorola:7e:08:d2 [b,g,n]	Silver	11	None	-86	490	91,813	11/26/10 10:56:43 A...	WPA2 - PSK CCMP
Motorola:7e:08:d3 [b,g,n]	Tin	11	None	-86	491	88,970	11/26/10 10:56:43 A...	WPA2 - PSK CCMP

- A. Use of no security on Visitor VLAN
- B. Use of Pre-Shared Key on several WLANs
- C. Use of Wired Equivalent Privacy on WLAN1g
- D. Use of Temporal Key Integrity Protocol on WLAN1a
- E. Use of Netgear and Motorola APs on the same RF bands
- F. Use of Counter Mode with Cipher Block Chaining Message Authentication Code Protocol on several WLANs

**Answer:** C

**QUESTION:** 30

You have configured Radio 2 (5 GHz) of an AP-650 to use 802.11n 20/40 MHz channels. Under the WLAN configuration settings you have selected WPA/WPA2-TKIP using a PSK. To test the connection you associate an 802.11n client laptop device but notice that the connection speed between the two 802.11n devices is limited to 54 Mbps. See Exhibit: B.3.2.06 at the bottom. Which of the following is the most likely reason for this condition?



- A. PSK is limited to 54 Mbps.
- B. 802.11 Protection Mechanisms are in effect.
- C. WPA/WPA2-TKIP encryption is limited to 54 Mbps.
- D. Channels in the 5 GHz band are limited to 802.11a rates of 54 Mbps.
- E. More wireless client devices are using 802.11a than are using 802.11n tipping the AP into legacy compatibility mode.

**Answer:** C

**QUESTION:** 31

Wi-Fi radios can generally operate in the presence of transmissions from neighboring radios, as long as the neighboring signal strengths are at -85 dBm or lower. In Exhibit 3.3.10 shown below, ESSIDs Tin, Silver, Chrome, and Visitors are virtual APs assigned to a single Motorola AP-650 radio. Which of the neighboring ESSIDs are most likely to cause co-channel interference to this AP?

Visible Access Points						
	MAC Address	SSID	Signal Strength	RSSI	Channel(E...	Standard
	68:7F:74:C5:4E:1D	MRB-guest	Poor	-93	6	802.11 b/g/n
	68:7F:74:C5:4E:1C	MRB	Poor	-93	6	802.11 b/g/n
	00:26:F2:0C:7A:FE	JAN1	Poor	-87	11	802.11 b/g
	00:25:9C:C8:C5:EC	Shadows	Poor	-87	1	802.11 b/g/n
	00:24:B2:86:04:D4	DOGGETT NETW...	Poor	-84	1	802.11 b/g
	00:24:7B:FB:EB:04	myqwest8958	Poor	-90	1	802.11 b/g/n
	00:23:69:DE:46:E2	beaglemama	Poor	-85	11	802.11 b/g/n
	00:23:68:7E:08:D3	Tin	Very Good	-72	11	802.11 b/g/n
	00:23:68:7E:08:D2	Silver	Very Good	-71	11	802.11 b/g/n
	00:23:68:7E:08:D1	Chrome	Very Good	-72	11	802.11 b/g/n
	00:23:68:7E:08:D0	Visitors	Very Good	-72	11	802.11 b/g/n
	00:1C:F0:FA:65:94		Excellent	-63	1	802.11 b/g
	00:1C:F0:EB:38:5B		Poor	-91	3	802.11 b/g/n
	00:1B:11:63:C7:C7	SysTel	Excellent	-64	6	802.11 b/g
	00:1B:11:63:C7:55	Moto	Excellent	-52	1	802.11 b/g
	00:14:BF:7E:D6:78	Linksys4860	Poor	-92	1	802.11 b/g
	00:0F:B5:6E:32:4A	WLAN1g	Excellent	-45	11	802.11 b/g

- A. Moto
- B. 3AN1
- C. WLAN1g
- D. beaglemama
- E. Hidden SSID (MAC = 00:1C:F0:FA:65:94)

**Answer:** B, D

**QUESTION:** 32

You are trouble shooting a WiNG 5 deployment for a large customer that was configured with 3 separate WLANs on the RFS controller. Each of the WLANs were designated for three different departments (Finance, Human Resources, and Warehouse users). The customer is complaining that users from certain department are incorrectly attaining access to resources from other departments. Which of the following is the MOST likely reason this is happening?

- A. No VLAN segmentation on the wired network
- B. The layer 3 VLAN option has not been configured properly
- C. WLAN segmentation has not been enabled on your RFS controller
- D. VPN tunnel has not been established between the RFS controller and the core switch

**Answer:** A

**QUESTION: 33**

Which of the following types of AP adoption require that DHCP services be enabled on the AP's native VLAN?

- A. Layer 1 Adoption
- B. Layer 2 Adoption
- C. Layer 3 Adoption
- D. Access Layer Adoption
- E. Logical Layer Adoption

**Answer: C**

**QUESTION: 34**

You have just received a call from a customer who explains that the mobile computers on his

WLAN:

- Are associating properly
- Have layer 3 connectivity
- Are NOT reaching a server on the destination network

The IP address of the RFS controller is 192.168.0.2 and the IP address of the remote server is 192.168.2.117. Which of the following, when performed, would allow the mobile computers to reach the destination network?

- A. Add the following route: 0.0.0.0/0 192.168.1.1
- B. Add the following route: 0.0.0.0/0 192.168.0.1
- C. Add the following route: 192.168.0.1 255.255.255.0/24
- D. Add the following route: 255.255.255.255/24 192.168.0.1

**Answer: C**

**QUESTION: 35**



After the initial deployment of a customer's WLAN you attempt to verify that test AP Radios 1 and 2 are operational. You have assigned Radio 1 (2.4 GHz) to use the SSID "WLAN1" and Radio 2 (5 GHz) to use the SSID "WLAN2". You perform a simple site survey using LANPlanner. LANPlanner plots the signal strength footprint of WLAN1 with no problem but WLAN2 does not show up in the LANPlanner heat map display. Based on the Wireless Configuration screen shown in Exhibit B.3.2.02 at the bottom, what are the most likely causes of this condition (select TWO)?

**WLAN Configuration**

SSID:

Description:

WLAN Status:  Disabled  Enabled

QoS Policy:   

---

**Other Settings**

Broadcast SSID:

Answer Broadcast Probes:

---

**VLAN Assignment**

Single VLAN  VLAN Pool

VLAN:

---

**RADIUS VLAN Assignment**

Allow RADIUS Override:

- A. The "default" QoS policy is in use.
- B. The SSID has been assigned to the wrong VLAN
- C. The Broadcast SSID feature has been disabled.
- D. The current configuration has not been pushed to the AP.
- E. The Allow RADIUS Override feature has been disabled.
- F. The Answer Broadcast Probes feature has been disabled

**Answer:** C, F

**QUESTION: 36**

You have deployed a Motorola WiNG 5 WLAN solution at the site of a new customer. Someone from the IT group of the customer will be designated the platform owner and will need to have the most robust set of administrative rights. To which administrative role would you assign to this individual?

- A. Monitor
- B. System
- C. Network
- D. Security
- E. Superuser
- F. Help Desk

**Answer:** E

**QUESTION: 37**

Following the installation of an RFS4000 controller with AP650 APs you use a popular WLAN discovery application to capture and display traffic to and from one of the APs. You notice that the majority of the transmitted frames are being sent at a

very low speed, as shown in image below, even though the 802.11n connection supports a 130 Nbps signaling rate. What is the most likely cause of this condition?

BSSID	Channel	Channel E...	Rate	Signal (dBm)	Size	Protocol
Motorola:7e:08:d0 [6		None	1 Mbps	-88	269	Beacon
Motorola:7e:08:d0 [6		None	130 Mbps	-60	24	802.11 Data
Motorola:7e:08:d0 [6		None	1 Mbps	-90	269	Beacon
Motorola:7e:08:d0 [6		None	1 Mbps	-89	269	Beacon
Motorola:7e:08:d0 [6		None	1 Mbps	-92	280	Probe response
Motorola:7e:08:d0 [6		None	1 Mbps	-92	280	Probe response
	4	None	1 Mbps	-69	10	ACK
	4	None	1 Mbps	-72	10	ACK
Motorola:7e:08:d0 [6		None	1 Mbps	-89	269	Beacon
Motorola:7e:08:d0 [6		None	1 Mbps	-91	269	Beacon
Motorola:7e:08:d0 [6		None	1 Mbps	-93	269	Beacon
Motorola:7e:08:d0 [6		None	1 Mbps	-89	269	Beacon
Motorola:7e:08:d0 [6		None	1 Mbps	-90	269	Beacon

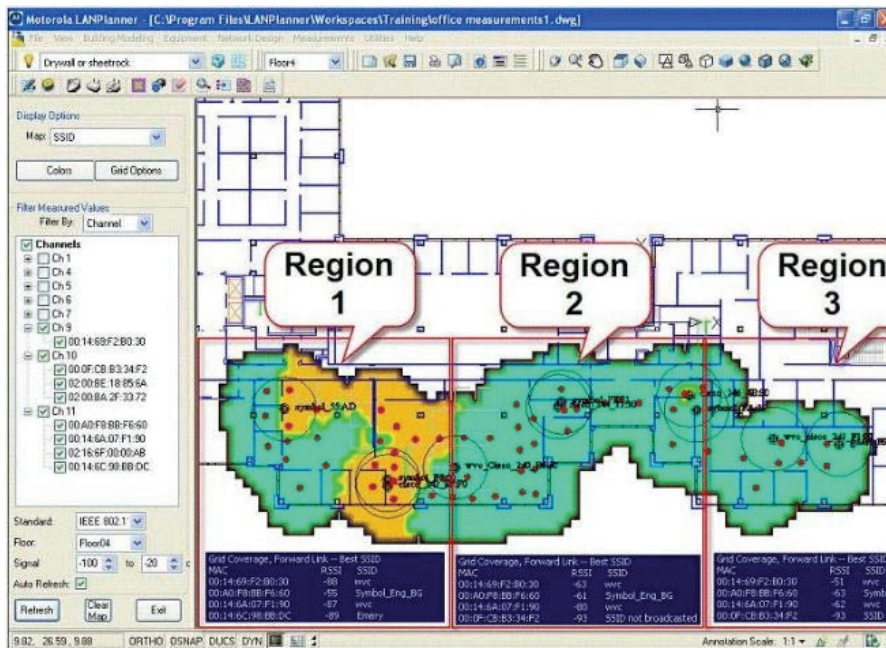
- A. Non-unicast traffic is being transmitted at Lowest Configured Basic Rate.
- B. A "Tar Pit" style Wireless Denial of Service (DoS) attack is underway from a nearby intruder.
- C. Beacons are always transmitted at 1 Mbps. Acknowledgements to the Beacons must be sent at the same speed.
- D. An ACL policy has been configured to allow only 1 Mbps traffic, with the exception of Null Data frames, to traverse the Native VLAN.

**Answer:** A

**QUESTION:** 38

You have just completed the collection of Live RF measurement data using LANPlanner for the purpose of verifying the performance of a newly upgraded WLAN deployment. The customers reason for upgrading the previous system was to support VoWLAN in a multi-tenant office building using Motorola EWP3000 Smartphones. The original installation plan calls for an RSSI of -62 dBm from one primary AP per channel, with co-channel interference from nearby APs at a level of, no greater than, -85 dBm. In order to verify this condition you are checking 2.4 GHz Channel 11 and some additional overlapping channels which seem to have been mis-configured by neighboring WLANs. Using the LANPlanner information shown in the two exhibits at the bottom, which of the following APs satisfies the requirements for a VoWLAN deployment using the prerequisites shown above?





Region 1		Region 2		Region 3	
MAC	RSSI	MAC	RSSI	MAC	RSSI
00:14:69:F2:B0:30	-88	00:14:69:F2:B0:30	-63	00:14:69:F2:B0:30	-51
00:A0:F8:BB:F6:60	-55	00:A0:F8:BB:F6:60	-61	00:A0:F8:BB:F6:60	-63
00:14:6A:07:F1:90	-87	00:14:6A:07:F1:90	-80	00:14:6A:07:F1:90	-62
00:14:6C:98:BB:DC	-89	00:0F:CB:B3:34:F2	-93	00:0F:CB:B3:34:F2	-93

- A. 00:14:6A:07:F1:90 in Region 1
- B. 00:A0: FS:BB: F6:60 in Region 2
- C. 00:14:69:F2:B0:30 in Region 2
- D. 00:A0: FS: BB:F6:60 in Region 1
- E. 00:14:69:F2:B0:30 in Region 3

**Answer:** D

**QUESTION:** 39

After deploying a new 802.11n WLAN you use a popular WLAN Discovery tool to analyze the channel settings being used in the vicinity. Using the information shown in the image below, which of the following statements is CORRECT concerning the use of channels in this area?

Device	SSID	Channel	Channel Ext...	Signal (dBm)
ipcas:36:90:73 [n]		11	None	N/A
Niigata:61:cf:d1 [b]		N/A	None	N/A
NETGEAR:6e:32:4a [a, b, g, n]	WLAN1g	11	None	-74
NETGEAR:a4:66:3c [a]	WLAN1a	36	None	-74
nex-G:6c:32:a2 [b]		10	None	-81
KENDIN:cf:ca:7d [b]		12	None	-12
SYSTEL:cc:99:5d [n]		11	None	N/A
Motorola:4e:e7:98 [n]		11	None	N/A
Motorola:54:ee:d4 [n]		11	None	N/A
Motorola:7d:f4:20 [a, n]	Nickel	149	Upper	-71
Motorola:7d:f4:21 [a, n]	Zinc	149	Upper	-71
Motorola:7e:08:20 [n]		11	None	N/A
Motorola:7e:08:78 [n]		11	None	N/A
Motorola:7e:08:d0 [b, g, n]	Visitors	11	None	-86
Motorola:7e:08:d1 [b, g, n]	Chrome	11	None	-86
Motorola:7e:08:d2 [b, g, n]	Silver	11	None	-86
Motorola:7e:08:d3 [b, g, n]	Tin	11	None	-86

- A. SSID WLAN1a is using 36 MHz channels
- B. SSID Zinc is using 20/40 MHz channels 149 and 153
- C. MAC address nex-G:6c:32:a2 is using an 802.11b-only reserved channel.
- D. MAC address KENDIN:cf:ca:7d is using a channel which is illegal in ETSI nations.

**Answer:** B

**QUESTION:** 40

You have been asked to cover a long narrow corridor and are determining the types of antennas to install. All of the following antennas are suitable for this location, EXCEPT:

- A. Wall mount Patch Antenna
- B. Omni Directional
- C. Leaky Feeder
- D. Yagi

**Answer:** A

**QUESTION:** 41

A customer is looking to install a new Motorola Solutions wireless infrastructure along with purchasing new Motorola Solutions 802.11a/b/g mobile computers for a warehouse. Your account team has recommended the Motorola Solutions RFS6000 with AP650 s because of the latest S02.11n technology. The customer has asked what the benefit would be by putting in an 802.11n wireless infrastructure when they aren't

sing 802.11n clients. You are preparing a justification. All of the following are valid responses, EXCEPT:

- A. 802.11n is backward compatible to legacy 802.11a/b/g clients.
- B. 802.11n provides a larger coverage area for legacy 802.11a/b/g clients at higher data rates (36Mb/s, 54Mb/s).
- C. Installing an 802.11n infrastructure provides better TCO and scalability for any future 802.11n clients that are added later.
- D. An 802.11n wireless infrastructure automatically upgrades the radios in the mobile computers to 802.11n and allows them to take advantage of all the 802.11n features.

**Answer:** B

**QUESTION:** 42

You are positioning an AP on the 4th floor of a multi floor building. The site survey indicated that there are concrete floors, a concrete block wall on one side of the room, and a sheetrock wall on the other end of that room. Which of these obstacles will attenuate the signal the most?

- A. The sheetrock wall
- B. Concrete cinder block wall
- C. Concrete floors at each level
- D. Depends on how close the AP is to each item

**Answer:** C

**QUESTION:** 43

After setting up the WLAN according to the site survey, you observe unanticipated RF interference which can be neither eliminated nor avoided. In this situation what could be done to mitigate the effect on throughput?

- A. Eliminate all security mechanisms
- B. Change the network type to an IBSS
- C. Adjust fragmentation to require larger frames
- D. Adjust fragmentation to require smaller frames

**Answer:** A

**QUESTION:** 44

To Read the [Whole Q&As](#), please purchase the [Complete Version](#) from [Our website](#).

# Trying our product !



- ★ **100%** Guaranteed Success
- ★ **100%** Money Back Guarantee
- ★ **365 Days** Free Update
- ★ **Instant Download** After Purchase
- ★ **24x7** Customer Support
- ★ Average **99.9%** Success Rate
- ★ More than **69,000** Satisfied Customers Worldwide
- ★ Multi-Platform capabilities - **Windows, Mac, Android, iPhone, iPod, iPad, Kindle**

## Need Help

Please provide as much detail as possible so we can best assist you.

To update a previously submitted ticket:



 <b>One Year Free Update</b> <p>Free update is available within One Year after your purchase. After One Year, you will get 50% discounts for updating. And we are proud to boast a 24/7 efficient Customer Support system via Email.</p>	 <b>Money Back Guarantee</b> <p>To ensure that you are spending on quality products, we provide 100% money back guarantee for 30 days from the date of purchase.</p>	 <b>Security &amp; Privacy</b> <p>We respect customer privacy. We use McAfee's security service to provide you with utmost security for your personal information &amp; peace of mind.</p>
---	---	--

[Guarantee & Policy](#) | [Privacy & Policy](#) | [Terms & Conditions](#)

Any charges made through this site will appear as Global Simulators Limited.

All trademarks are the property of their respective owners.

Copyright © 2004-2015, All Rights Reserved.