

100% Money Back
Guarantee

Vendor:NetApp

Exam Code:NS0-194

Exam Name:NetApp Certified Support Engineer

Version:Demo

QUESTION 1

You are using AFF storage with the NVMe storage protocol on your Linux clients.

In this scenario, which NVMe feature must be present and enabled for the client to see storage failover happen?

- A. Asymmetric Namespace Access (ANA)
- B. Multi-Path I/O (MPIO)
- C. Asymmetric Logical Unit Access (ALUA)
- D. NVMe Qualified Name (NQN)

Correct Answer: B Section: (none)

QUESTION 2

```
cluster1::> vserver services name-service ns-switch show -vserver svml
```

Vserver	Database	Source Order
svml	hosts	files, dns
svml	group	files, ldap
svml	passwd	files, ldap
svml	netgroup	files
svml	namemap	files

5 entries were displayed.

Referring to the exhibit, the UNIX user "prof1" will be looked up in which source first?

- A. nis
- B. dns
- C. ldap
- D. files

Correct Answer: B Section: (none)

QUESTION 3

What are two reasons to use HTTPS as the transport method for AutoSupport delivery for Active IQ? (Choose two.)

- A. Only HTTPS transfers are compressed.
- B. AutoSupport OnDemand (AOD) is supported.
- C. HTTPS is encrypted.
- D. HTTPS does not use a standard port.

Correct Answer: BC Section: (none)

Reference: <https://www.netapp.com/media/10438-tr-4444.pdf>

QUESTION 4

You have a 4-node MetroCluster system. A node needs to be taken down for maintenance, but all data needs to remain online.

In this scenario, what should you do to bring down a single node?

- A. Perform an HA takeover of the node.
- B. Perform a MetroCluster switchover.
- C. Disable HA on each side of the MetroCluster.
- D. Perform an aggregate relocation of the CFO aggregates on the node.

Correct Answer: A Section: (none)

QUESTION 5

A volume was accidentally deleted two hours ago by another administrator. No backups exist.

In this scenario, what do you do to restore the data?

- A. Use the ONTAP System Manager to recover the volume.
- B. Use a volume snapshot to return the data to the active file system.
- C. Use the volume recovery queue to restore the volume.
- D. Use an aggregate snapshot to revert the aggregate to an earlier state.

Correct Answer: C Section: (none)

Reference: <http://docs.netapp.com/ontap-9/index.jsp?topic=%2Fcom.netapp.doc.dot-cm-vsmg%2FGUIIDD4E85AB5-EEBB-44B4-A648-5B1B04FD5F85.html>

QUESTION 6

When using NetApp Volume Encryption (NVE) which type of server is needed to keep encryption keys separate from

encrypted data?

- A. KMIP
- B. RADIUS
- C. TLS
- D. TKIP

Correct Answer: A Section: (none)

Reference: <http://docs.netapp.com/ontap-9/index.jsp?topic=%2Fcom.netapp.doc.pow-nve%2FGUIDEAD13D8E-0219-45B6-A2C6-B25B76C9CA1A.html>

QUESTION 7

On an AFF system, which three storage efficiencies are enabled by default? (Choose three.)

- A. reallocation
- B. compaction
- C. deduplication
- D. compression
- E. encryption

Correct Answer: BCD Section: (none)

Reference: <https://docs.netapp.com/ontap-9/index.jsp?topic=%2Fcom.netapp.doc.dot-cm-vsmg%2FGUIDC1E3029E-1514-4579-939B-67160E849632.html>

QUESTION 8

A customer is showing disk utilization is at 100% in Active IQ even though there are low protocol operations on the controller. You review the data shown in the exhibit.

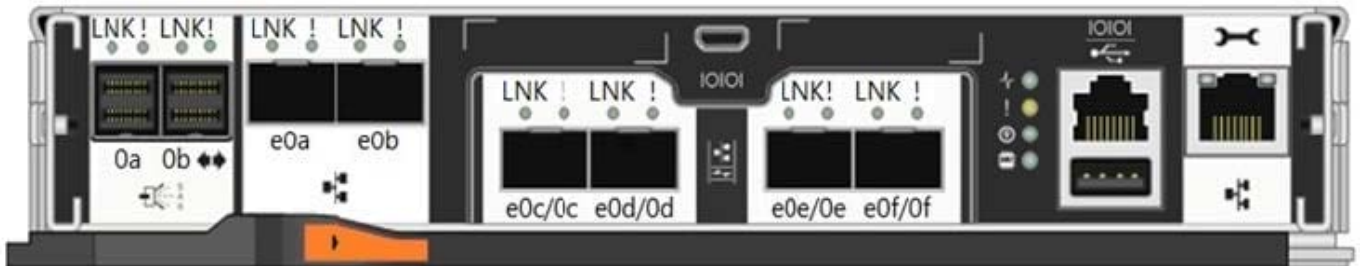
disk	ut%	xfers	ureads	--chain-usecs	writes	--chain-usecs		
/aggr0/plex0/rg0:								
6b.34	1	2.18	0.17	1.00	10700	0.98	13.49	490
6a.19	1	2.35	0.17	1.00	36600	1.15	11.83	504
6a.45	13	17.98	16.88	2.13	5810	0.53	8.81	887
6b.18	13	17.57	16.55	2.17	5357	0.42	11.00	1189
6a.29	12	16.70	15.30	2.15	5820	0.60	6.75	1996
6b.25	13	18.31	17.13	2.17	5611	0.48	7.59	1709
6b.39	100	15.44	15.07	2.22	191927	0.00
6a.17	12	16.75	15.52	2.10	6126	0.50	8.63	1475
6b.38	12	16.98	15.95	2.09	5614	0.43	9.92	1349

In this situation, what should you do?

- A. Replace disks 6b.34 and 6a.19.
- B. Add disks to the aggregate to bring down the average utilization.
- C. Replace disk 6b.39.
- D. Reseat shelf module B.

Correct Answer: C Section: (none)

QUESTION 9



In the AFF A200 shown in the exhibit, which port is a CNA port?

- A. |0|0|
- B. e0c/0c
- C. e0a
- D. 0a

Correct Answer: B Section: (none)

Reference: <https://docs.netapp.com/platstor/topic/com.netapp.doc.hw-2700-install-setup/GUID-FE4BD3C8-3DB4-438A-A5CE-FEEF74AE8BAF.html>

QUESTION 10

A customer receives the message shown below in their EMS logs.

Tue Jun 27 18:34:18 CEST [netapp-ct1: cp_worker: waf1.cp.toolong:error]: Aggregate AG1_NTAP_PROD experienced a long CP. Tue Jun 27 18:37:10 CEST

Which two data sources do you use to explain this message? (Choose two.)

- A. ONTAP System Manager
- B. Performance Archive
- C. Active IQ Unified Manager
- D. mgwd.log

Correct Answer: AB Section: (none)

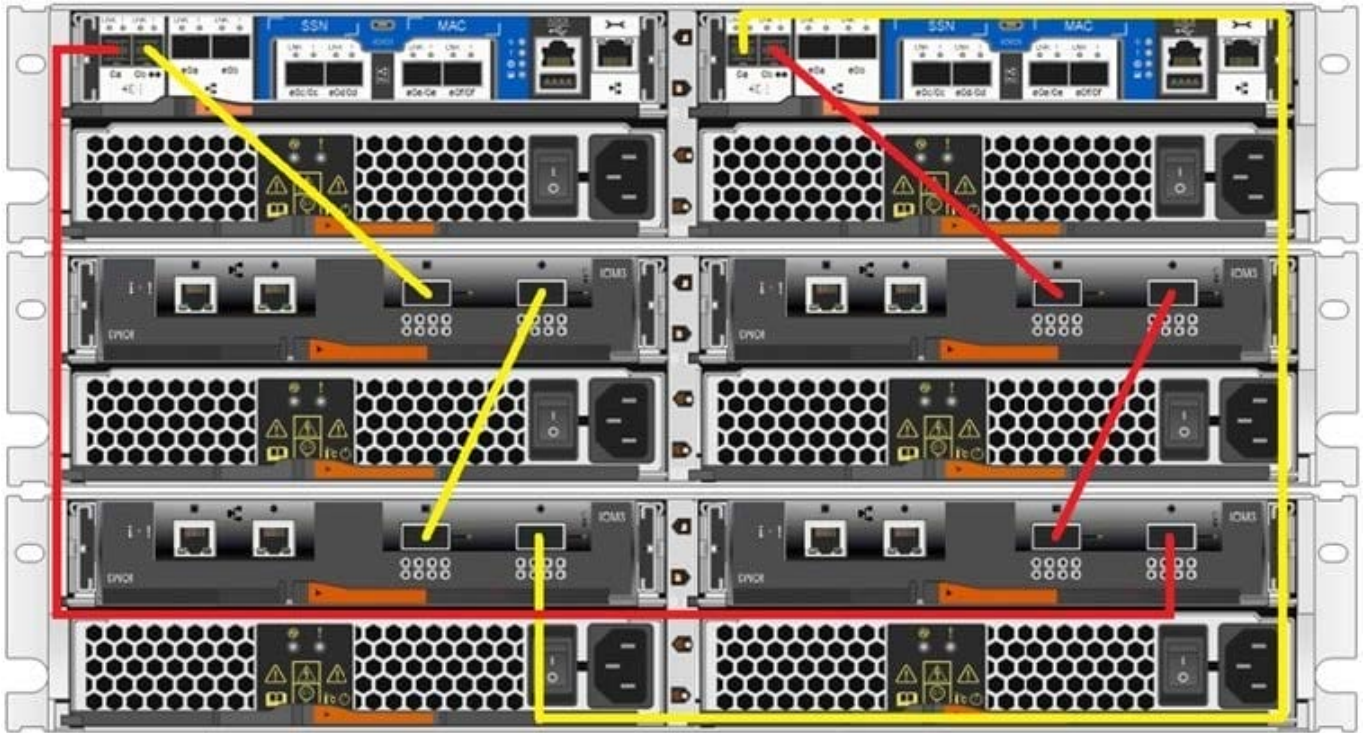
Reference: https://kb.netapp.com/Advice_and_Troubleshooting/Data_Storage_Software/ONTAP_OS/First_steps_troubleshooting_waf1_exempt10%3A_waf1.cp.toolong%3Aerror

QUESTION 11

You receive the error shown below on a FAS2750 HA pair.

Mon Jun 24 00:27:30 UTC [NetappA: scsi_cmdblk_strthr_admin: scsi.cmd.checkCondition:error]: Unknown device 0a.00.99: Check Condition: CDB 0x12: Sense Data SCSI:hardware error - (0x4 - 0x44 0x0 0x0) (0).

The system is cabled as shown in the exhibit.



What should you do to clear the error?

- A. Replace the cable connected to controller A's 0a port.
- B. Replace the controller of controller B.
- C. Replace the controller of controller A.
- D. Re-cable the system per the FAS2750 installation guide.

Correct Answer: C Section: (none)

QUESTION 12

A disaster causes a FlexGroup volume to be unrecoverable, but it was protected by a SnapMirror relationship. You solve the issue, and the source is operational. Now, you want to return to serving the data from the original source.

In this scenario, what do you do next?

- A. Initialize the SnapMirror relationship.
- B. Restore data from a backup copy.
- C. Perform a SnapMirror update.
- D. Delete the SnapMirror relationship.

Correct Answer: A Section: (none)

Reference: <https://docs.netapp.com/ontap-9/index.jsp?topic=%2Fcom.netapp.doc.pow-fg-mgmt%2FGUID576192B0-18B8-40D3-AA3E-FC34415DC4F7.html>

