

Vendor: VMware

Exam Code: VCP510

Exam Name: VMware Certified Professional 5 – Data Center Virtualization (VCP5-DCV) Exam

Version: Demo

Exam A

QUESTION 1

Users are experiencing performance issues when updating their database hosted on a virtual machine. The administrator determines that disk I/O is high across one of the HBAs on the ESXi host containing the virtual machine.

What is the action will most likely correct the issue without significantly impacting other users or datastores?

- A. Manually configure the disk multipathing policy to Round Robin for the datastore
- B. Migrate the virtual machine to an NFS datastore using Storage vMotion
- C. Use Storage vMotion to migrate the virtual machine to a new VMFS5 datastore
- D. Map additional LUNs to the ESXi host and extend the datastores

Correct Answer: A

QUESTION 2

An administrator takes a vSphere snapshot of a virtual machine and applies an OS update.

After confirming the update the administrator cannot enable Fault Tolerance on the virtual machine and suspects there are snapshots that have not been consolidated.

Which two operations can the administrator perform to verify consolidation is needed? (Choose two.)

- A. Expose the Needs Consolidation column in the virtual machines tab of the host.
- B. Browse the datastore containing the vmdk files and look for files with the "-delta.vmdk" extension.
- C. Expose the Needs Consolidation column in the virtual machine summary tab.
- D. Select and run the vSphere Cluster HealthCheck from the right-click menu of the cluster object.

Correct Answer: AB

QUESTION 3

An administrator has created a virtual machine that will be accessed from a public kiosk. Management has requested that the virtual machine be reset to a known state once a week or on demand if requested.

Which method is the simplest way to meet this requirement?

- A. Configure the storage array to be vSphere aware and script routine array snapshot restores of the datastore.
- B. Implement a 3rd party imaging server and PXE boot the virtual machine off a static image.
- C. Set the VMDKs of the virtual machine to be Independent-Nonpersistent and schedule restarts of the virtual machine.
- D. Create Nonpersistent disks for the virtual machine and set the guest OS to reboot once a week.

Correct Answer: C

QUESTION 4

What are three true statements about quiescing virtual machine snapshots? (Choose three.)

- A. vSphere snapshot quiescing only occurs on Windows guest OSes.
- B. The quiescing operation is automatic with any snapshot.
- C. The quiescing operation varies by guest OS.
- D. Quiescing should occur before array-based snapshots to ensure consistency.
- E. VMware Tools is required for quiescing to be successful.

Correct Answer: CDE

QUESTION 5

An administrator has deployed vCenter Data Recovery and wants the largest possible deduplication store. Which three storage options can be used? (Choose three.)

- A. Two CIFS shares

- B. Two RDMs on a FCP array
- C. One NFS mount on the ESXi host and one RDMs on an iSCSI array
- D. One CIFS share and one FCP RDM
- E. Two NFS mounts on the ESXi host

Correct Answer: BCE

QUESTION 6

An administrator has recently upgraded their Update Manager infrastructure to vSphere 5.x. Several hosts and virtual machines have not been upgraded yet.

Which vSphere component when upgraded will have the least impact to the existing environment?

- A. Virtual Machine Hardware
- B. ESX Hosts
- C. VMFS datastores
- D. VMware Tools

Correct Answer: D

QUESTION 7

An administrator is using Update Manager 5.x to update virtual appliances in a vSphere environment.

The environment is using the vCenter Server Virtual Appliance (vCSA). What would cause the remediation to fail?

- A. Updating of the appliance can only be done if the vCenter Server Virtual Appliance (vCSA) has been put into Maintenance Mode.
- B. Remediation must be configured on the Appliance Administration page before use.
- C. Remediation of the vCenter Server Virtual Appliance (vCSA) with Update Manager is not supported.
- D. Remediation requires the hosts to be connected to vCenter using an IPv4 address.

Correct Answer: D

QUESTION 8

An administrator is working to update the hosts and virtual machines in a vSphere 5.x deployment using Update Manager Baselines.

Other than host patches, which three items require a separate procedure or process to update? (Choose three.)

- A. Operating system patches
- B. Virtual Appliance updates
- C. Virtual Machine Virtual Hardware upgrades
- D. VMware Tools on machines without VMware Tools already installed
- E. Application patches within the virtual machine

Correct Answer: ADE

QUESTION 9

An administrator selects the Profile Compliance tab of an vSphere cluster, then selects Check Compliance Now. Which features requirements are not checked by this?

- A. vMotion
- B. Fault Tolerance
- C. DRS
- D. Host Profiles

Correct Answer: D

QUESTION 10

An administrator is troubleshooting an ESXi 5.x host and needs to export diagnostic information. The host

is currently managed by a vCenter Server instance.

Which two ways can the information be gathered using the vSphere Client? (Choose two.)

- A. Select Home. Under Administration, click System Logs and click the Export System Logs button. Select the affected ESXi host. Select Select All. Select a location and click Finish.
- B. In the vSphere Client, select the affected ESXi host. Right-click the host and select Export Diagnostic Data. Select a location and click OK.
- C. Log in to the ESXi host locally, Select Export System Logs.
- D. In the vSphere Client, select the affected ESXi host. Select File, Export and Export System Logs. Select Select All. Select a location and click Finish.

Correct Answer: AD

QUESTION 11

An ESXi 5.x host displays a warning icon in the vSphere console and its summary page lists a configuration issue "SSH for the host has been enabled."

What are two ways to clear this warning? (Choose two.)

- A. Using the Security Profile pane of the Configuration tab in the vSphere Client
- B. Using the Direct Console User Interface (DCUI)
- C. Using the Advanced Settings pane of the Configuration tab in the vSphere Client
- D. Using the Networking pane of the Configuration tab in the vSphere Client

Correct Answer: AB

QUESTION 12

vCenter reports a connectivity problem with a ESXi 5.x host that is not a member of a cluster.

An administrator attempts to connect directly to the host using the vSphere Client but fails with the message "An unknown connection error occurred."

Virtual machines running on the host appear to be running and report no problem.

What two methods would likely resolve the issue without affecting the virtual machines? (Choose two.)

- A. Enter the service mgmt-vmware restart command from either SSH or local CLI
- B. Select Restart Management Agents in the Direct Console User Interface (DCUI)
- C. Select Reboot Host in the Direct Console User Interface (DCUI)
- D. Enter the services.sh restart command from either SSH or the local CLI

Correct Answer: BD

QUESTION 13

Click the Exhibit button. ACME Catering Services is using esxtop to troubleshoot a performance problem with one of their ESXi 5.x hosts.

Host disconnections from vCenter Server as well as sluggish performance when performing tasks on the host have been observed.

Based on the output in the exhibit, how many vCPU's have been assigned to FileServer01?

```

3:58:20pm up 15:52, 300 worlds, 7 VMs, 14 vCPUs; CPU load average: 1.07, 1.10, 1.09
PCPU USED(%): 94 94 93 93 92 86 90 89 AVG: 91
PCPU UTIL(%): 93 93 93 93 93 87 89 89 AVG: 91

```

ID	GID	LWID	NAME	NWLD	%USED	%RUN	%SYS	%WAIT	%VMWAIT	%RDY	%IDLE	%OVRLP	%CSTP	%MLMTD	%SWPWT
30172	30172	40901	dsacjose-vma50	5	0.58	0.52	0.06	497.01	0.15	3.63	96.71	0.01	0.00	0.00	0.00
31109	31109	42222	Dev_App_01	5	60.98	60.30	0.04	395.71	0.00	44.19	0.00	0.08	0.00	0.00	0.00
31112	31112	42228	Dev_SQL_01	5	62.93	63.58	0.02	398.20	0.00	38.52	0.00	0.08	0.00	0.00	0.00
31115	31115	42234	Dev_Web_01	5	67.16	66.76	0.02	398.02	0.00	35.66	0.00	0.10	0.00	0.00	0.00
31275	31275	42457	FileServer01	12	470.63	471.52	0.05	608.00	210.90	113.49	0.00	1.00	9.28	0.00	0.74
31281	31281	42491	jonathanm-SQL20	5	1.83	1.79	0.05	495.49	0.00	3.86	95.39	0.01	0.00	0.00	0.00
31886	31886	43286	victim-001	5	60.60	60.34	0.01	393.30	0.00	46.82	0.00	0.08	0.00	0.00	0.00

- A. 1
- B. 2
- C. 4
- D. 8

Correct Answer: D

QUESTION 14

An administrator notices that log files kept on an ESXi 5.x host are being rotated very quickly, inhibiting the troubleshooting of an issue.

Which two configuration changes will resolve the issue? (Choose two.)

- A. Configure syslog to send the logs a syslog server
- B. Increase the number of logs kept
- C. Increase the logging level
- D. Increase the size of the partition where log files are stored

Correct Answer: AB

QUESTION 15

A series of Auto Deploy ESXi 5.x hosts which utilize vSphere Standard Switches are unable to boot. In prior testing, all of the hosts were able to boot successfully.

Which two conditions might cause this issue? (Choose two.)

- A. The Hosts are unable to connect to the SAN.
- B. The TFTP server is down.
- C. The DNS server is down.
- D. The DHCP server is down.

Correct Answer: BD

QUESTION 16

An administrator wants to monitor the health status of an ESXi 5.x host. However, when the administrator clicks the Hardware Status tab the following error is displayed.

This program cannot display the webpage. What might cause this problem?

- A. The VMware VirtualCenter Management Webservices Service is not started.
- B. The required plug-in is not enabled.
- C. The VMware ESXi Management Webservices Service is not started
- D. The name of the vCenter Server system could not be resolved.

Correct Answer: A

QUESTION 17

An iSCSI array is being added to a vSphere 5.x implementation. An administrator wants to verify that all IP storage VMkernel interfaces are configured for jumbo frames. What are two methods to verify this configuration? (Choose two.)

- A. Run the `esxcli network ip interface list` command
- B. Run the `esxcfg-vswif -l` command
- C. Ensure that the Enable Jumbo Frames box is checked in the VMkernel interface properties in the vSphere client
- D. Ensure that the MTU size is set correctly in the VMkernel interface properties in the vSphere client

Correct Answer: AD

QUESTION 18

An administrator has configured a vSphere Distributed Switch to send all network traffic to a collector virtual machine for analysis. However, after checking the collector virtual machine several hours later the administrator finds that no data has been collected. vSphere 5.x has been deployed in the datacenter. Which two items below could be causing this issue? (Choose two.)

- A. The source virtual machine does not have Promiscuous Mode enabled.
- B. The source and target virtual machines are not both on the same vSphere Distributed Switch.
- C. The port group or distributed does not have Promiscuous Mode enabled.
- D. The port group or distributed port does not have NetFlow enabled.

Correct Answer: BD

QUESTION 19

A vSphere 5 implementation consists of a fully automated DRS cluster with two ESXi 5.x hosts with the following vSphere Standard Switch configuration.

1. Switch A . three vmnics, one port group named sFTP-PG
2. Switch B . two vmnic, one port group named Web-PG
3. All vmnics are trunked to the same physical switch.

DRS has been configured with an anti-affinity rule for all virtual machines in the Web-PG so that no more than half of the virtual machines run on any given host.

The virtual machines on WebPG are experiencing significant network latency.

The network team has determined that a performance bottleneck is occurring at the ESXi host level.

Which solution will require the least amount of administrative work and the least amount of service interruption?

- A. Migrate Web-PG to Switch A and sFTP-PG to Switch B on each host
- B. Move a vmnic from Switch A to Switch B on each host
- C. Convert the three Switch Bs to a single vSphere Distributed Switch
- D. Use vMotion to redistribute some of the VMs in Web-PG to a different ESXi host

Correct Answer: B

QUESTION 20

A user attempts a remote SSH connection to a newly-installed ESXi 5.x host to execute some commands. The SSH connection attempt fails, though the user is able to receive a ICMP ping back from the host. What must the administrator do to enable SSH? (Choose two.)

- A. Enable root logon on the ESXi server.
- B. Open the SSH port on the ESXi firewall.
- C. Start the SSH service on the ESXi server.
- D. Create a local user on the ESXi server.

Correct Answer: BC

QUESTION 21

An administrator is setting up vMotion in a vSphere environment. A migration is run to test the configuration, but fails. What could the administrator do to resolve the issue?

- A. Ensure the VMkernel port group is configured for Management Traffic.
- B. Enable VMkernel port group for the vSphere cluster.
- C. Ensure the vMotion enabled adaptors configured for the same subnet.
- D. Use a vDS instead of a standard switch.

Correct Answer: C

QUESTION 22

An administrator is unable to connect a vSphere Client to an ESXi 5.x host. Which option can be selected from the direct console to restore connectivity without disrupting running virtual machines?

- A. Restore the Standard Switch from the ESXi host.
- B. Restart the Management Agents from the vSphere client.
- C. Restart the Management Agents from the ESXi host
- D. Disable the Management Network from the vSphere client.

Correct Answer: C

QUESTION 23

An administrator receives a complaint that a virtual machine is performing poorly. The user attributes the issue to poor storage performance.

If the storage array is the bottleneck, which two counters would be higher than normal? (Choose two.)

- A. Average ESXi VMKernel latency per command, in milliseconds (KAVG per cmd)
- B. Average device latency per command, in milliseconds (DAVG per cmd)
- C. Average virtual machine operating system latency per command, in milliseconds (GAVG per cmd)
- D. Number of SCSI reservation conflicts per second (CONS per second)

Correct Answer: BD

QUESTION 24

An administrator must decommission a datastore. Before unmounting the datastore, which three requirements must be fulfilled? (Choose three.)

- A. No virtual machines reside on the datastore.
- B. The datastore is not used for vSphere HA heartbeat.
- C. No registered virtual machines reside on the datastore.
- D. The datastore must not have any extents.
- E. The datastore must not be part of a datastore cluster.

Correct Answer: ABE

QUESTION 25

An administrator is informed that there will be a storage maintenance window and that failovers may occur. What is the expected length of time that a Windows 2008 virtual machine storage I/O will pause during a path failover?

- A. 0 to 30 seconds
- B. 90 to 120 seconds
- C. 60 to 90 seconds
- D. 30 to 60 seconds

Correct Answer: D

QUESTION 26

A company wants to increase disk capacity for their vSphere environment Management mandates that:

1. vMotion must work in this environment.
2. The existing LAN infrastructure must be used.

Which storage option best meets the company objectives?

- A. iSCSI
- B. Fibre Channel
- C. SATA
- D. NFS

Correct Answer: D

QUESTION 27

Which resource management technique can be used to relieve a network bottleneck caused by a virtual machine with occasional high outbound network activity?

- A. Convert the switch from a vSphere Standard Switch to a vSphere Distributed Switch.
- B. Create a new port group for the virtual machine and enable traffic shaping.
- C. Apply traffic shaping to the other virtual machines in the same port group.
- D. Apply traffic shaping to the virtual machine with high activity.

Correct Answer: B

QUESTION 28

An administrator has determined that storage performance to a group of virtual machines is reduced during peak activity.

The virtual machines are located in a VMFS datastore called Production1 on an active-active storage array.

The ESXi 5.x host running the virtual machines is configured with an MRU multipathing policy.

Which two actions can be taken to improve the storage performance of these virtual machines? (Choose two.)

- A. Add virtual storage, create a VMFS datastore called Production2 on the new storage, and then migrate some of the virtual machines from Production1 to Production2.
- B. Change the storage multipathing policy to Round Robin.
- C. Add physical storage, create a VMFS datastore called Production2 on the new storage, and then migrate some of the virtual machines from Production1 to Production2.
- D. Change the storage multipathing policy to Fixed with default settings.

Correct Answer: BC

QUESTION 29

Which of these factors indicates a high likelihood that the performance of a virtual machine disk is being constrained by disk I/O?

- A. A large number of commands issued
- B. A high device latency value
- C. A high disk used value
- D. A large number of kilobytes read and written

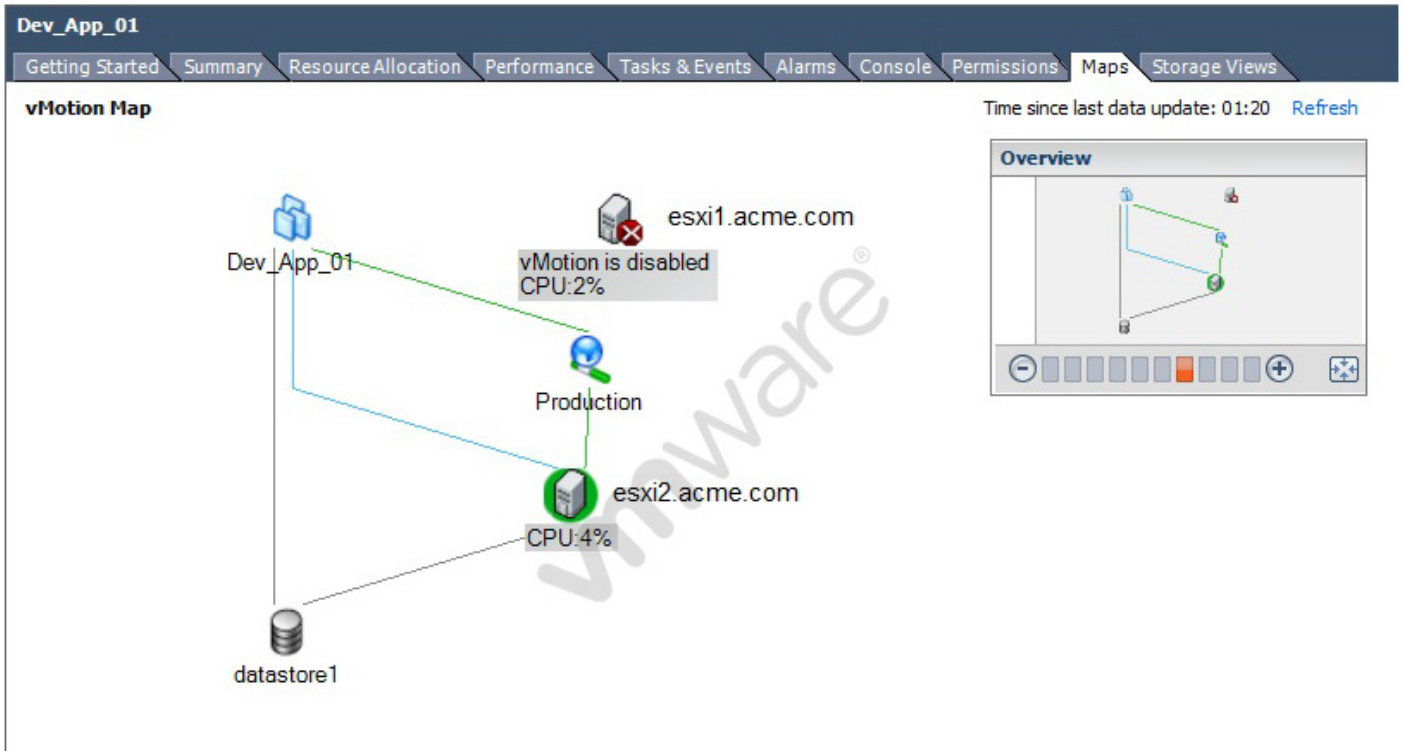
Correct Answer: B

QUESTION 30

Click the Exhibit button. An administrator is configuring vMotion in their environment.

As part of the implementation, an administrator is examining resource mapping for virtual machines.

What is a likely cause of the error shown in the exhibit?



- A. vMotion has been disabled because there are no other hosts in the cluster with vMotion enabled.
- B. vMotion has not been enabled on the Production port group.
- C. The administrator has not created a Management network.
- D. vMotion has not been enabled on a VMkernel port group.

Correct Answer: D

QUESTION 31

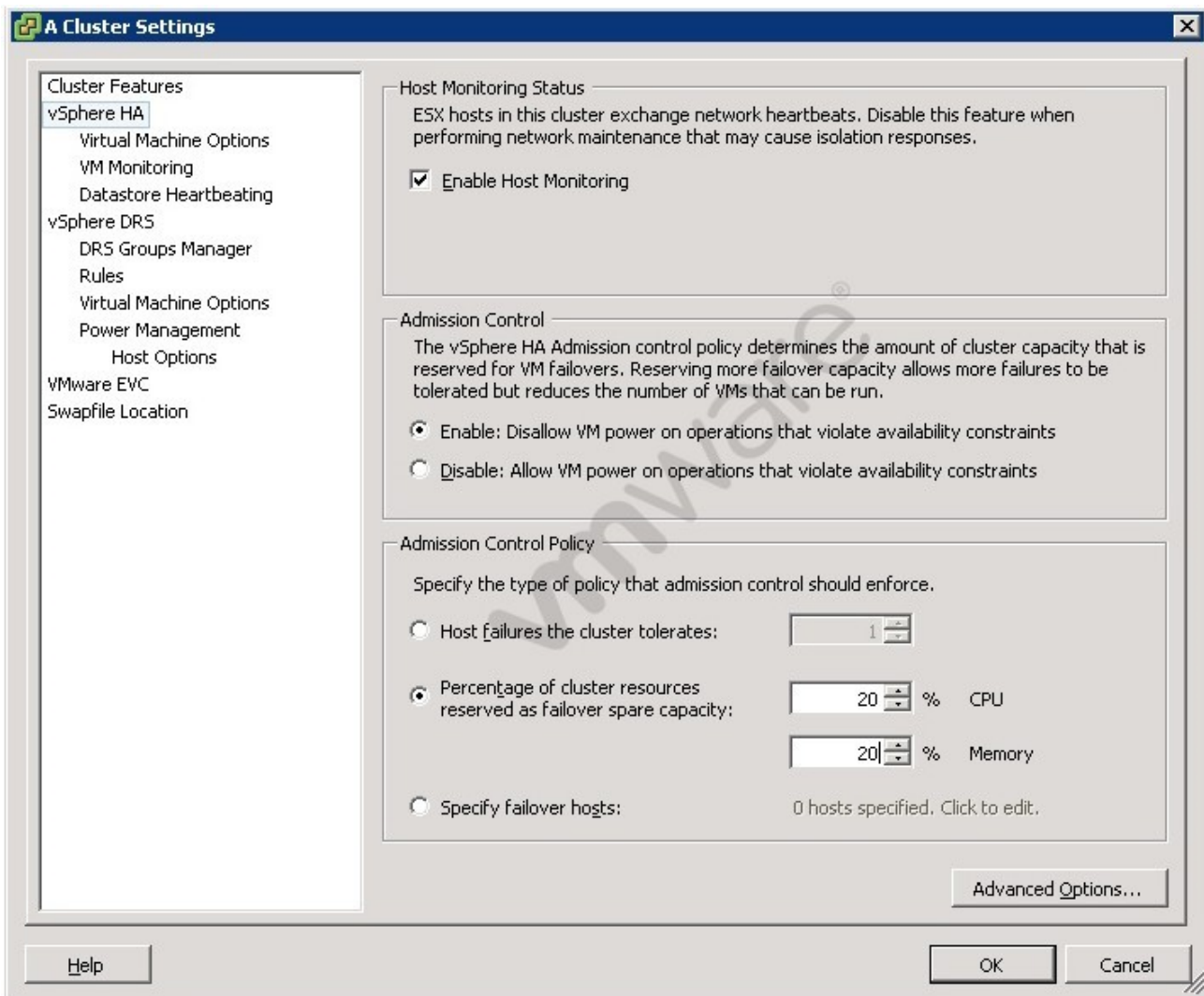
Which two circumstances might cause a DRS cluster to become invalid? (Choose two.)

- A. DRS has been disabled on one or more ESXi hosts.
- B. An ESXi host has been removed from the cluster.
- C. A migration on a virtual machine is attempted while the virtual machine is failing over.
- D. Virtual machines have been powered on from a vSphere Client connected directly to an ESXi host.

Correct Answer: BD

QUESTION 32

Click the Exhibit button. An administrator has a DRS/HA cluster with five ESXi 5.x hosts. When the administrator tries to start a new Web server virtual machine, an error is displayed saying insufficient resources exist for HA. Based on the HA configuration in the exhibit, which two changes can resolve the issue? (Choose two.)



- A. Shut down one or more virtual machines on the cluster.
- B. Set VM Restart Priority to Disabled for the Web server.
- C. Set Host Isolation response to Shut down.
- D. Suspend one or more virtual machines in the cluster.

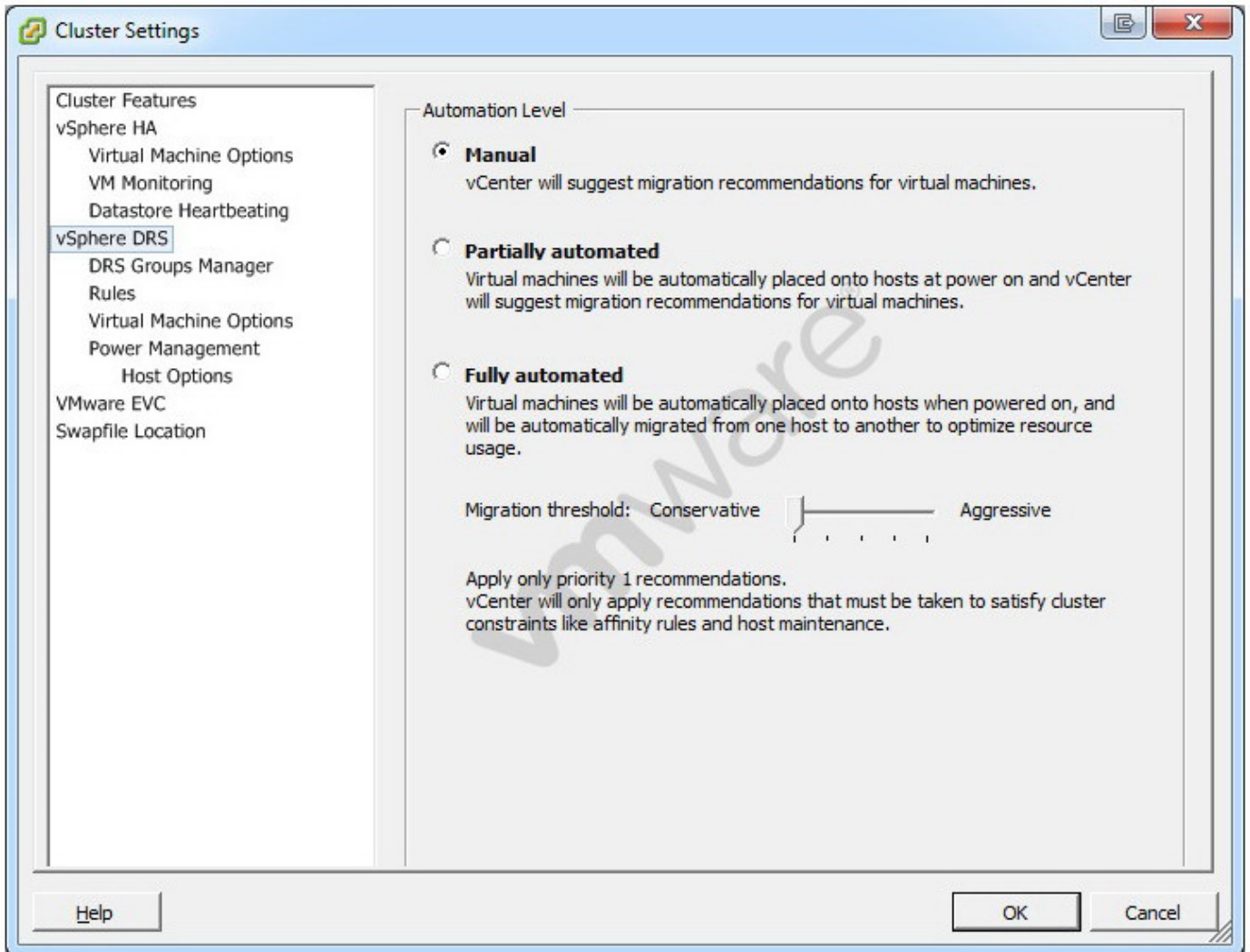
Correct Answer: AD

QUESTION 33

Click the Exhibit button. An administrator is applying patches to a batch of ESXi 5.x hosts in an under-allocated HA/DRS cluster.

An attempt is made to place the host into maintenance mode, but the progress has stalled at 2%. DRS is configured as shown in the exhibit.

Of the four choices below, two would effectively resolve this issue. Which two steps could be taken to correct the problem? (Choose two.)



- A. Enable VMware EVC.
- B. Set the virtual machines on the host to Fully Automated.
- C. Shut down the virtual machines on the host.
- D. Move the virtual machine swap file off the local datastore.

Correct Answer: BC

QUESTION 34

An administrator is configuring Storage DRS in their environment. The Datastore cluster is composed of 4 VMFS3 volumes and 9 VMFS5 volumes.

Storage DRS has been enabled, but is showing as disabled on several virtual machine disks in the datastore cluster.

Which two conditions would cause this error to occur? (Choose two.)

- A. The virtual machine is stored on a VMFS 3 volume.
- B. One or more virtual machines have Persistent disks.
- C. The virtual machine is stored on a NFS datastore.
- D. The virtual machine is stored on a datastore with a 2mb block size.

Correct Answer: AB

QUESTION 35

An administrator finds that vMotion and Storage vMotion operations do not succeed on a virtual machine. The virtual machine has been configured with N_Port ID Virtualization. The virtual machine has two data RDMs, one using a RAID5 LUN and one using a RAID0+1 LUN. The mapping file for the RAID5 LUN was created on the same datastore as the virtual machine, and the mapping file for the RAID0+1 LUN was placed in a datastore used for production data virtual disks. Which two statements are true about this configuration? (Choose two.)

- A. Storage vMotion cannot be used unless both mapping files are placed on the same datastore.
- B. vMotion cannot be used unless both mapping files are placed on the same datastore.
- C. vMotion cannot be used with RDMs.
- D. Storage vMotion cannot be used with NPIV.

Correct Answer: BD

QUESTION 36

A company has converted several physical machines to virtual machines but are seeing significant performance issues on the converted machines. The host is configured with sufficient memory and storage does not appear to be a bottleneck. Which metric can be checked to determine if CPU contention exists on an ESXi 5.x host?

- A. %RUN
- B. %WAIT
- C. %USED
- D. %RDY

Correct Answer: D

QUESTION 37

Which three statements regarding Network I/O Control (NIOC) are accurate? (Choose three.)

- A. NIOC enforces traffic bandwidth limits on the overall vDS set of dvUplinks.
- B. NIOC limits maximum throughput control on connected virtual machines.
- C. Load based teaming efficiently uses a vDS set of dvUplinks for network capacity.
- D. Isolation provides priority to any one traffic flow.
- E. Relative shares fairly allocates available bandwidth among multiple flows.

Correct Answer: ACE

QUESTION 38

Which three requirements must be met in order to use Storage I/O Control? (Choose three.)

- A. The datastore must contain multiple VMFS extents.
- B. The datastore must contain a single NFS volume.
- C. The datastore must not include virtual machines with snapshots.
- D. The datastore must be managed by a single vCenter Server.
- E. Array-based automated storage tiering must be explicitly certified.

Correct Answer: BDE

QUESTION 39

What number of IOPS should be used with Storage I/O Control to limit disk throughput to roughly 10 MBps if the guest application writes 64KB blocks?

- A. 320
- B. 160
- C. 240

D. 64

Correct Answer: B

QUESTION 40

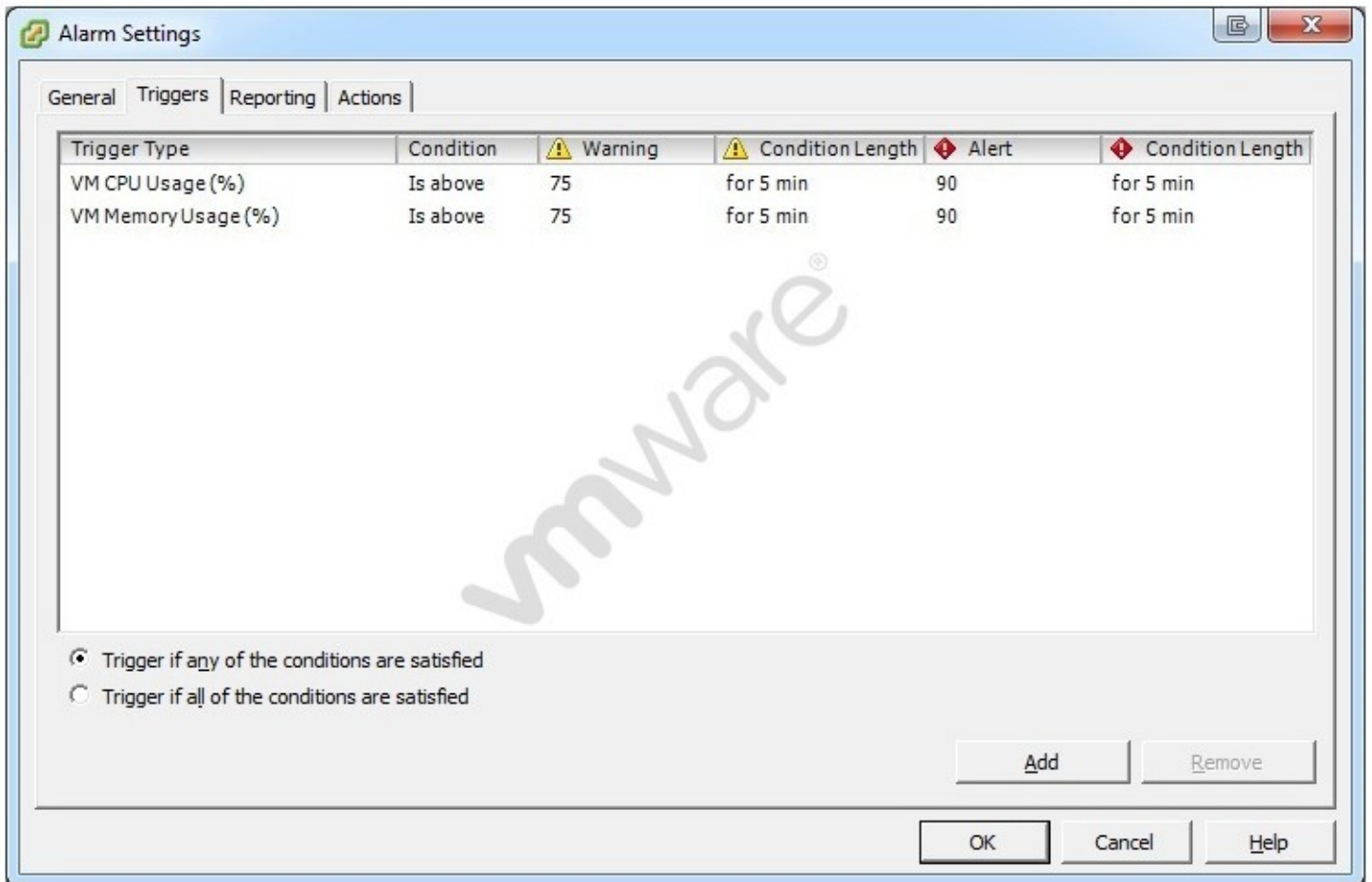
It appears that a single vCPU virtual machine in a resource pool called Production is having performance problems because it does not have enough CPU resources available. Which two methods can be used to improve performance and reduce CPU contention of this virtual machine while maintaining compatibility with DRS? (Choose two.)

- A. Configure a CPU reservation for this virtual machine.
- B. Increase the CPU shares for the resource pool.
- C. Increase the CPU shares for the virtual machine.
- D. Increase the share priority setting for the Production resource pool.

Correct Answer: AC

QUESTION 41

Click the Exhibit button. ACME Party Supplies Corporation has a requirement to monitor all virtual machines in a vSphere 5 environment for CPU and Memory usage. An administrator configures an alarm in vCenter Server to send an alert when any VM exceeds 65% memory utilization and 75% CPU utilization. The alarm should warn administrators if the virtual machine is within 20% of the defined thresholds. The alarm has been created with the default options as shown in the exhibit. Which three modifications must be made to the default settings in the alarm definition to satisfy the stated requirements? (Choose three.)



- A. Set the VM CPU Usage (%) Alert trigger to 75% and the VM Memory Usage (%) Alert trigger to 55%
- B. Set the VM CPU Usage (%) Alert trigger to 75% and the VM Memory Usage (%) Warning trigger to 55%

- C. Set the VM CPU Usage (%) Warning trigger to 65% and the VM Memory Usage (%) Warning trigger to 45%
- D. Set the Trigger if all of the conditions are satisfied radio button
- E. Set the Trigger if any of the conditions are satisfied radio button

Correct Answer: ACD

QUESTION 42

An administrator is performing maintenance on a storage array used by an ESXi 5.x host. The administrator wants to disable alarm actions for the host while the maintenance is taking place. What procedure will accomplish this task?

- A. Go to the Alarms tab for each ESXi host in the DRS cluster. Locate storage-related alarms. Right-click and disable each alarm.
- B. Right-click the DRS cluster and select Alarm and Disable Alarm Actions.
- C. Right-click the ESXi host and select Alarm and Disable Alarm Actions.
- D. Go to the Alarms tab for the Datacenter containing the DRS cluster. Locate the storage-related alarms. Right-click and disable each alarm.

Correct Answer: C

QUESTION 43

An administrator would like to have vCenter take action any time a virtual machine is using over 90% of its available resources for five minutes or longer.

Which three actions can be taken by vCenter Server in response to the trigger without running a script? (Choose three.)

- A. Power on a VM
- B. Reboot Guest on VM
- C. Increase Virtual Machine Memory
- D. Migrate a VM
- E. Increase Virtual Machine CPU Shares

Correct Answer: ABD

QUESTION 44

A group of virtual machines has been deployed using thin disks because of limited storage space availability.

The storage team has expressed concern about extensive use of this type of provisioning. At which level can the administrator set an alarm to notify the storage team?

- A. Datastore
- B. Virtual Machine
- C. Host
- D. Resource Pool

Correct Answer: A

QUESTION 45

An administrator has purchased a new 10GB Converged Network Adapter (CNA) for installation in a system that is running ESXi 5.x.

The administrator has downloaded the latest driver from the hardware vendor and wants to include the driver in an image.

The image profile acceptance level is set to VMwareAccepted. The acceptance level of the driver is VMWareAccepted.

Which two statements are true about the inclusion of this driver in the image? (Choose two.)

- A. Support calls for the driver will be directed to the partner.
- B. The image can be built, but the driver will not be included in the image.

- C. The image can be built and the driver will be included.
- D. Support calls for the driver will be handled by VMware.

Correct Answer: AC

QUESTION 46

What are the three service offerings provided by a VMware-powered public cloud? (Choose three.)

- A. Committed
- B. Transient
- C. Dedicated
- D. Highly Elastic
- E. Basic

Correct Answer: ACE

QUESTION 47

An administrator has been tasked with upgrading an existing host from ESX 4.1 to ESXi 5.x. The existing host has only vSwitch0 with all the default settings.

The upgraded host will have the following new requirements.

1. 116 virtual machines will be connected.
2. Four uplinks configured for port-based load balancing.
3. The switch will include a secondary heartbeat network for HA.

Which two statements are true about this configuration? (Choose two.)

- A. The Service Console Port will be removed during the upgrade
- B. The configuration requires only one VMkernel Port
- C. The default vSwitch0 is sufficient for this configuration
- D. A change to vSwitch0 Properties is required

Correct Answer: AC

QUESTION 48

Virtual machine VM1 is unable to communicate with virtual machine VM2. Both virtual machines are connected to a portgroup named Production on vSwitch1 on host ESXi01. Which statement could explain why?

- A. The only vmnic connected to vSwitch1 on ESXi01 is set to unused
- B. The only vmnic connected to vSwitch1 on ESXi01 is set to standby
- C. Load balancing settings on Production do not match vSwitch1
- D. VM1 is configured for VGT, VM2 is configured for VST

Correct Answer: D

QUESTION 49

An administrator is creating a new virtual machine using the New Virtual Machine wizard in custom mode on an ESXi 5.x host with two quad-core CPUs.

What would limit the maximum number of virtual sockets for the virtual machine to 8? (Choose three.)

- A. Windows 2008 32-bit is configured as the guest operating system.
- B. Virtual machine hardware version 8 is configured for the VM.
- C. Hyperthreading is disabled on the ESXi host.
- D. The ESXi host is configured with a Standard license.
- E. The number of cores per virtual socket is set to 4.

Correct Answer: CDE

QUESTION 50

What are two methods of maximizing VMFS performance for virtual machines across all the hosts in a cluster? (Choose two.)

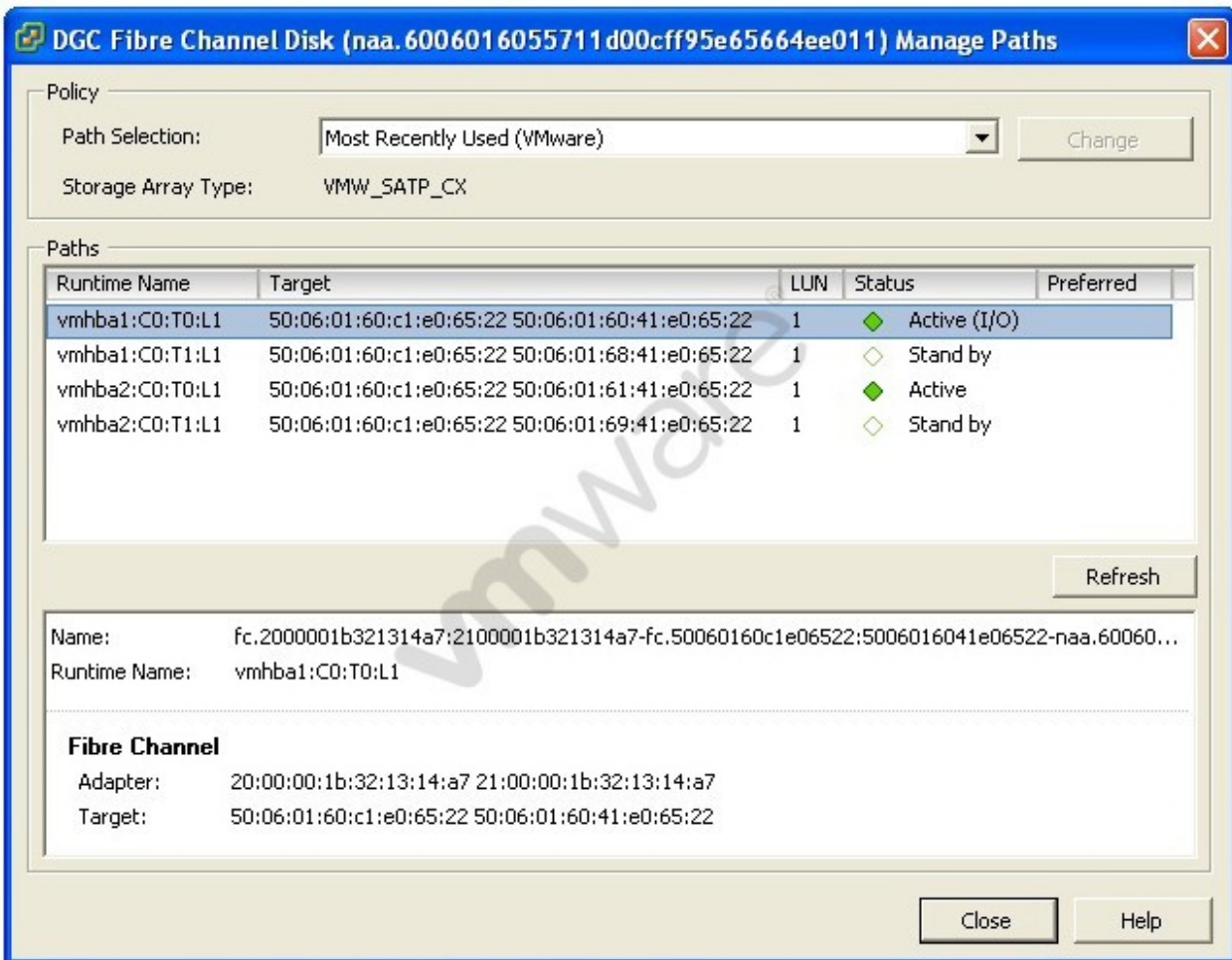
- A. Use disk shares to prioritize virtual machine disk I/O
- B. Enable Storage I/O control
- C. Enable Storage DRS with I/O load balancing
- D. Enable Host Cache using local SSD drives

Correct Answer: BC

Exam B

QUESTION 1

Click the Exhibit button. For the selected item, what two properties could the storage administrator use to create a zone? (Choose two.)



- A. 20.00.00.1b.32.13.14.a7
- B. vmhba1.C0.T0.L1
- C. fc.2000001b321314a7.2100001b321314a7
- D. 50.06.01.60.c1.e0.65.22

Correct Answer: AD

QUESTION 2

Which two statements are true regarding vSphere standard switches? (Choose two.)

- A. Beaconing requires at least three uplinks to be considered useful.
- B. Virtual machines on different vSwitches require the vSwitches to share an uplink to communicate.
- C. vSphere virtual switches require at least one uplink adapter.
- D. Setting the number of ports to the maximum on a vSwitch will exhaust the total ports on a host.

Correct Answer: AD

QUESTION 3

Which types of traffic can a VMkernel port be enabled to carry on a ESXi 5.x host? (Choose three.)

- A. NFS

- B. Fault Tolerant
- C. Management
- D. iSCSI
- E. vMotion

Correct Answer: BCE

QUESTION 4

Networking policies for a vSphere Standard Switch, such as traffic shaping and security, can be overridden on which vSphere elements?

- A. On the virtual machine
- B. On the physical switch
- C. On the physical network interface
- D. On the port group

Correct Answer: D

QUESTION 5

When would a license server be configured for vCenter Server 5.x?

- A. When managing ESX 3.x servers
- B. When the vCenter Server Virtual Appliance (vCSA) is used
- C. Within the first 60 days
- D. A standalone license server is installed by default

Correct Answer: A

QUESTION 6

What two Advanced IP Allocation Schemes are available? (Choose two.)

- A. Fixed
- B. DHCP
- C. OVF Environment
- D. Transient

Correct Answer: BC

QUESTION 7

What are two valid Resource settings that can be set at the vApp level? (Chose two.)

- A. Network
- B. CPU
- C. Memory
- D. Disk

Correct Answer: BC

QUESTION 8

An administrator is investigating a report of slow disk performance. Where is the most efficient place for the administrator to check?

- A. The performance tab of the vApp.
- B. The performance tab of the virtual machine.
- C. The performance tab of the vApp resource pool.
- D. The performance tab of the cluster.

Correct Answer: B

QUESTION 9

An administrator creates a new Role of "Virtual Machine Creator" for members of the helpdesk and server teams. Privileges include.

Datastore > Allocate space
Network > Assign network
Resource > Assign virtual machine to resource pool
Virtual machine > Configuration - all
Virtual machine > Interaction all

The new role is granted to the teams at the appropriate VMs and Templates folder, Cluster and Datastore objects. After applying the role, users report they are unable to create new Virtual Machines. What should be changed to allow new virtual machines to be created?

- A. Add a privilege to the role Virtual machine > Inventory - Create new
- B. Grant the teams the role at the Datacenter level
- C. Ensure Propagate to Child Objects is selected on the objects.
- D. Grant the teams the role on the Production network object.

Correct Answer: A

QUESTION 10

A mid-size company with a vSphere 5 cluster wants to enable their helpdesk staff to be able to acknowledge alarms on the hosts. Currently the group "HelpDesk" has the Read-only role assigned to the Cluster object. Which action should the administrator perform?

- A. Enable Propagate to Child Objects on the current permission.
- B. Move the current permission to the Datacenter object.
- C. Add the Alarms - Acknowledge Alarm privilege to the current role and enable "Propagate to Child Objects"
- D. Clone the role, add the Alarms - Acknowledge Alarm privilege, replace the current role.

Correct Answer: D

QUESTION 11

A company is planning an upgrade from vSphere 4.x to vSphere 5. They currently have three dual CPU servers licensed for ESXi 4.1 Advanced
Each server has 256GB of RAM installed.
Their virtual machines are sized three ways.

Light. 1v CPU, 4GB RAM
Medium. 2v CPU, 8GB RAM
Heavy. 4 vCPU, 12GB RAM
The Production workload consists of.
20 Light servers
20 Medium servers
2 Heavy servers
The Development workload consists of.
10 Light servers
10 Medium servers

How will vSphere 5 licensing impact their upgrade? (Choose two.)

- A. They will need to purchase additional ESXi licenses.
- B. They will be able to reduce their power consumption.
- C. They will be restricted from powering on additional virtual machines.
- D. A license upgrade will be needed to add vCPUs to the Heavy servers.

Correct Answer: BC

QUESTION 12

What is a benefit of vCenter Linked-Mode?

- A. Allows the vCenter Server Virtual Appliance (vCSA) to manage multiple sites
- B. Pools vRAM entitlement
- C. Increases vCenter security
- D. Increases vCenter reliability

Correct Answer: B

QUESTION 13

What virtual machine action listed below can be performed on a template?

- A. Power on
- B. Clone
- C. Edit Settings
- D. Migrate

Correct Answer: B

QUESTION 14

An administrator is attempting to clone a running virtual machine, but receives an error that prevents that the virtual machine is using a device that prevents the operation. What two device types listed below could be causing this error? (Choose two.)

- A. An independent mode virtual disk
- B. A physical compatibility mode RDM
- C. An LSI logic SAS adapter
- D. A BusLogic Parallel adapter

Correct Answer: AB

QUESTION 15

When cloning a virtual machine to a template, what two attributes from the list below can be changed for the destination virtual disk? (Choose two.)

- A. Virtual disk format
- B. Number of network adaptors
- C. IP Address
- D. Location for virtual machine files

Correct Answer: AD

QUESTION 16

What tool can an administrator use to determine if an existing environment is ready for Fault Tolerance?

- A. Fault Tolerance Map
- B. VMware SiteSurvey Tool
- C. VMware Cluster Analyzer
- D. VMware Capacity Planner

Correct Answer: B

QUESTION 17

What two methods can be used to reduce the vMotion migration time of a virtual machine? (Choose two.)

- A. Enable High priority on the virtual machine before starting the Migrate wizard.
- B. Select High priority during the Migrate wizard.

- C. Lower the memory reservation for the virtual machine.
- D. Ensure the cluster has the default Swapfile policy set.

Correct Answer: BD

QUESTION 18

Which types of devices can be connected to a virtual machine during a vMotion migration? (Choose two.)

- A. SCSI pass-through devices connected to the ESXi 5 host.
- B. NFS mounts inside of the guest.
- C. USB pass-through devices connected to the ESXi 5 host.
- D. ISO images connected using the vSphere 5 client.

Correct Answer: BC

QUESTION 19

An administrator notices that the database virtual machines fail to backup within the backup window. Each database virtual machine has 4 vCPUs, 16GB RAM and 12 virtual disks. There are 16 database virtual machines to backup using 8 backup jobs. Which is the simplest way to improve the backup performance for these virtual machines?

- A. Add a backup job for each virtual machine.
- B. Set a 16GB reservation for each virtual machine.
- C. Add 1MB VMDK drives at 1.0, 2.0 and 3.0 on the vDR appliance.
- D. Upgrade the array to 8GB FCP and ensure multipathing is configured properly.

Correct Answer: C

QUESTION 20

What are three of the steps recalled patches automatically go through in vSphere Update Manager? (Choose three.)

- A. Hosts with recalled patches are placed maintenance mode.
- B. Hosts with recalled patches are remediated.
- C. The recalled patch binary is deleted from the repository.
- D. The recalled patch is flagged in the database.
- E. A notification is generated in the notification tab.

Correct Answer: CDE

QUESTION 21

Select three of the steps for configuring iSCSI Software Initiator multipathing when load balancing with a single vSphere standard switch. (Choose three.)

- A. Change the Path Selection Policy to Round Robin (VMware)
- B. Enable Override switch failover order
- C. Enable Route based on IP Hash
- D. Enable iSCSI port binding on the VMkernel object or objects
- E. Add VMkernel adapters to the iSCSI Network Configuration

Correct Answer: ABE

QUESTION 22

An administrator wants to adjust disk resource allocation to ensure proper storage performance. Which two mechanisms are available? (Choose two.)

- A. Shares
- B. Guarantee IOPs

- C. Limit IOPs
- D. Reservation

Correct Answer: AC

QUESTION 23

Assuming that ballooning is possible, under which three circumstances might the VMkernel use a swap file for a running virtual machine? (Choose three.)

- A. The Mem.CtlMaxPercent value is between 10 and 25 percent.
- B. Memory cannot be reclaimed quickly enough.
- C. The virtual machine is starting up.
- D. VMware Tools is not installed.
- E. 50% of the configured memory has already been ballooned.

Correct Answer: ABE

QUESTION 24

Which functions can be performed with the Plug-in Manager? (Choose two.)

- A. Enable an installed plug-in
- B. Remove permissions for a plug-in
- C. View the status of installed plug-ins
- D. Uninstall a plug-in

Correct Answer: AC

QUESTION 25

What are two requirements for successful vMotion migration? (Choose two.)

- A. CPUs with matching SpeedStep settings must exist on both the source and destination hosts.
- B. Virtual machines must not utilize hardware local to the host such as SCSI pass-through.
- C. Virtual machines must not have a CDROM connected via the vSphere client.
- D. Dedicated Gigabit Ethernet Networking must exist between the source and destination hosts.

Correct Answer: BC

QUESTION 26

Which two options will be presented during the Migrate wizard for a powered on virtual machine? (Choose two.)

- A. Change Host
- B. Change Host and Datastore
- C. Change Network
- D. Change Datastore

Correct Answer: AD

QUESTION 27

What are two requirements for a fully functional vSphere HA cluster? (Choose two.)

- A. vCenter installed or a vCenter Server Virtual Appliance (vCSA) deployed.
- B. Access to local storage for each host in the cluster.
- C. Static IP addresses entered in each hosts file in the cluster.
- D. A minimum of one VMkernel port per host.

Correct Answer: AD

QUESTION 28

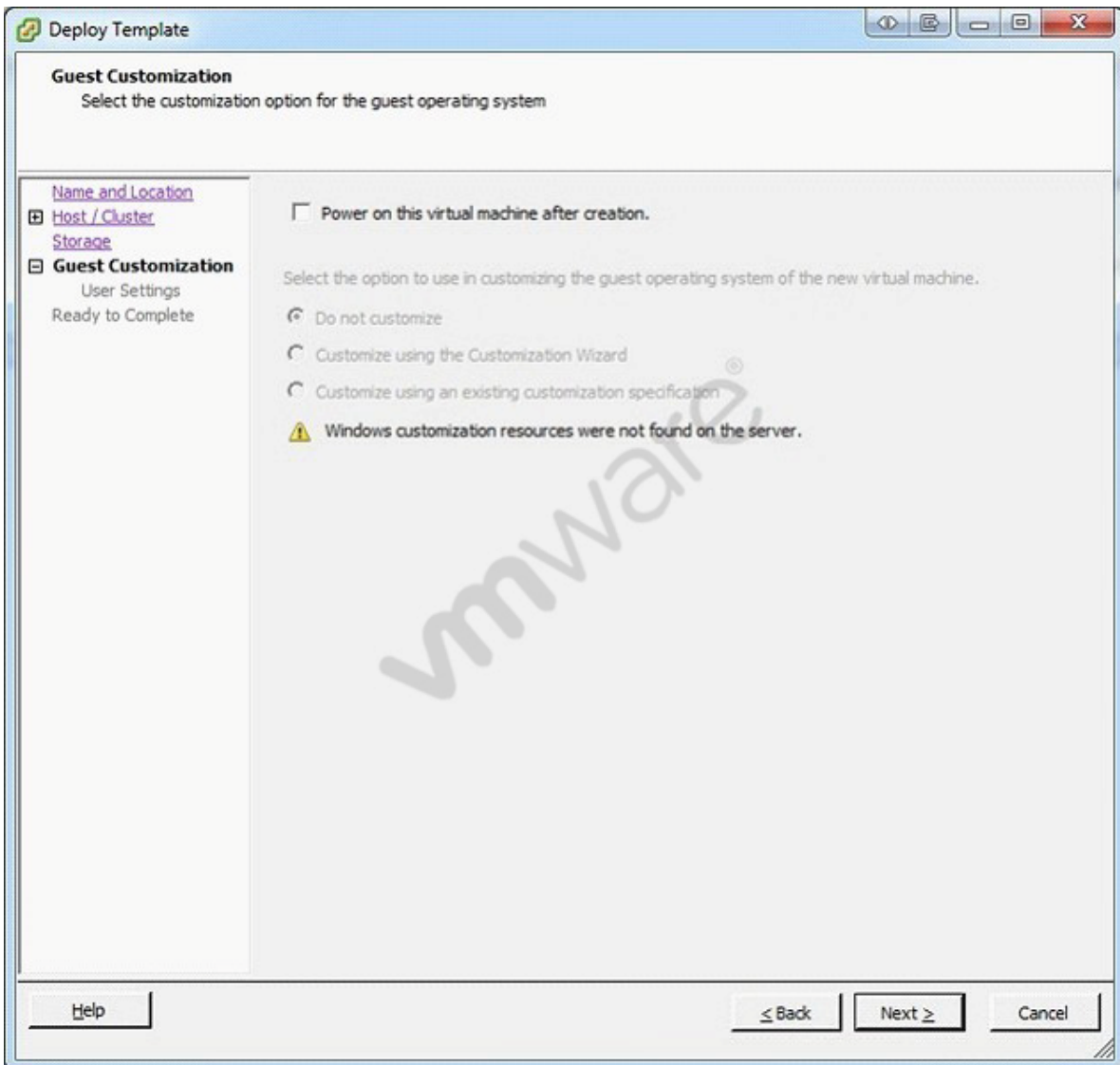
An administrator plans to deploy ESXi 5.x, but does not want to use CD or DVD media. What are two alternate ways to provide the ESXi 5.x installation script to the host? (Choose two.)

- A. PXE
- B. FTP
- C. HTTP
- D. IPMI

Correct Answer: BC

QUESTION 29

Click the Exhibit button. An administrator has implemented a new vSphere 5 environment and is deploying their first Windows 2008 R2 template. When running the Deploy Template wizard, the error shown in the exhibit appears. What can be done to correct the problem?



- A. Select the correct guest OS setting for the virtual machine.
- B. Windows 2003 x64 cannot be customized.
- C. Download and install the Microsoft Sysprep tool into the virtual machine to be customized.
- D. Download the Microsoft Sysprep tool to the appropriate vCenter Server directory.

Correct Answer: A

QUESTION 30

An administrator uses VMware Data Recovery to make backups of virtual machines. Checking on the backup jobs that were run the previous evening, the administrator notices that some jobs completed but that other jobs did not. What are two possible causes for the failure? (Choose two.)

- A. The deduplication store had 400GB of available space before the start of the affected jobs.
- B. Eight backup jobs were running simultaneously, causing new jobs to fail to start.
- C. The backup window was not open long enough to retrieve all of the changed blocks.
- D. CPU utilization on the VDR appliance exceeded 90% before one or more jobs executed.

Correct Answer: BD

QUESTION 31

An administrator is responsible for enabling file access for desktop users. Many users have complained that they cannot access their files. An alert in the vSphere Client states that the storage connectivity alarm for all hosts has been triggered. The storage screen indicates that everything is connected, but the triggered alert has not been acknowledged. Which action will correct the user access problem?

- A. Rescan the storage on the file-sharing virtual machine on which the users are seeing the problem.
- B. Reconnect the storage containing the user files to all hosts in the cluster, then Refresh datastores on all hosts in the cluster.
- C. Tell each user to reboot their computer.
- D. Reconnect the storage containing the user files to all hosts in the cluster, then Rescan datastores on all hosts in the cluster.

Correct Answer: D

QUESTION 32

While performing a security check the vSphere administrator finds unassigned AD accounts with vSphere permissions. If the accounts are removed from Active Directory what will happen to any user logged into vCenter with those accounts?

- A. The vSphere client warns the user they will be logged out in 1 hour.
- B. The user can remain logged in indefinitely.
- C. The user is immediately disconnected from vCenter Server and cannot log back in.
- D. The user can remain logged into vCenter for up to 24 hours.

Correct Answer: D

QUESTION 33

Where are IP addresses for a vSphere Storage Appliance (VSA) cluster managed?

- A. On each VSA appliance using a web-based portal
- B. On the VSA Manager tab for the cluster hosting VSA
- C. On the VSA Manager appliance using a web-based portal
- D. On the vCenter server installed on a VSA host

Correct Answer: B

QUESTION 34

An administrator is configuring a stretched HA configuration and has HA errors on all of the hosts at the remote site. What can be done to ensure virtual machines at one site can be restarted at the remote site?

- A. Ensure any firewalls between the hosts are allowing port 8182
- B. Create separate HA clusters at each site and enable Stretch Cluster on each
- C. Ensure the latency between the sites is less than 5 milliseconds
- D. Ensure each site has no more than 4 primary hosts

Correct Answer: A

QUESTION 35

What is a valid example of a vSphere Update Manager upgrade?

- A. A VMware Tools upgrade on a Fault Tolerant machine with automatic snapshots.
- B. Upgrading and patching multiple ESXi hosts simultaneously in a selected cluster.
- C. Upgrading an ESX 4.1 host to ESXi 5.x with a sufficient boot partition.
- D. An ESXi 5.x host update with automatically deleted snapshots.

Correct Answer: C

QUESTION 36

Which is an important benefit provided by VLANs?

- A. Reduced hardware requirements
- B. Increased broadcast traffic
- C. Fault tolerance
- D. Increased security on a network segment

Correct Answer: A

QUESTION 37

Before upgrading an ESXi host to vSphere 5.x from vSphere 4.x, which three actions should be taken? (Choose three.)

- A. Update vCenter from 4.x to 5.x
- B. Convert any Service Console port to Management.
- C. Add an updated license to the host
- D. Update vSphere 4.x licenses using the VMware License Portal
- E. Verify the intended host is compatible with vSphere 5.x

Correct Answer: ADE

QUESTION 38

Recently, a storage interface card in an ESXi 5.x host has been experiencing inconsistent connectivity states. Which two methods can be used to quickly identify the issue and immediately notify an administrator so that the issue can be resolved? (Choose two.)

- A. Set up an alarm with the Lost Storage Path trigger to send an email for notification when the connection is lost.
- B. Set up an alarm with the Lost Storage Connectivity trigger to send an email for notification when the connection is lost.
- C. Set up an alarm with the Storage Redundancy Degraded trigger and configure an SNMP trap for notification when the connection is lost.
- D. Set up an alarm with the Lost Storage Connectivity trigger and configure an SNMP trap for notification when the connection is lost.

Correct Answer: BD

QUESTION 39

The VMware vCenter Server Virtual Appliance (vCSA) offers many features of the Windows application version. Which of the following features is only available on the Windows application version of vCenter?

- A. Host Profiles
- B. Template and clone customization
- C. Active Directory authentication

D. IPv6

Correct Answer: D

QUESTION 40

An administrator is configuring a vSphere HA cluster for three ESXi 5.x hosts and their resident virtual machines. The cluster will be configured to support a single host failure. Resource reservations must be enforced during a failover event. Assuming default settings, how does HA determine the current failover capacity?

- A. Calculating the largest possible CPU and Memory guarantee for any running virtual machine in the cluster, then calculating how many virtual machines of that size can be started on the largest host and reserving space in the cluster accordingly.
- B. Averaging the largest possible CPU and Memory guarantee for any running virtual machine in the cluster, then calculating how many virtual machines of that size can be started on the largest host and reserving space in the cluster accordingly.
- C. Calculating the largest possible CPU and Memory guarantee for any virtual machine in the cluster, then calculating how many virtual machines of that size can be started on the largest host and reserving space in the cluster accordingly.
- D. Averaging the largest possible CPU and Memory guarantee for any virtual machine in the cluster, then calculating how many virtual machines of that size can be started on the largest host and reserving space in the cluster accordingly.

Correct Answer: A

QUESTION 41

What are three valid subprofile configurations that can be edited with the Host Profile editor? (Choose three.)

- A. Cluster
- B. Date and Time
- C. Networking
- D. Security
- E. Licensing

Correct Answer: BCD

QUESTION 42

An administrator finds that an ESXi 5.x host cannot be managed by vCenter Server. Which three logs can be reviewed using the DCUI? (Choose three.)

- A. Syslog
- B. Config log
- C. Virtual Center Agent
- D. ESXi shell logs
- E. VMware HA log

Correct Answer: ABC

QUESTION 43

Which two steps are required before VMware Data Recovery can be used? (Choose two.)

- A. The Data Recovery Appliance Module must be installed on vCenter Server.
- B. A private network must be created for the backup appliance.
- C. The vSphere Client plug-in must be installed on any machine VDR will be managed from.
- D. The Data Recovery backup appliance must have additional storage added to it.

Correct Answer: CD

QUESTION 44

Which three tasks can be selected from the home page of an ESXi 5.x host? (Choose three.)

- A. Browse objects managed by the host
- B. Browse NFS mounts for this host
- C. Download VMware vCenter or the vSphere client from vmware.com
- D. Shutdown or restart the host
- E. Download the PowerCLI installer

Correct Answer: ABC

QUESTION 45

When deploying an OVF template, the resulting virtual disk is created in what file format?

- A. OVF
- B. VMDK
- C. VMX
- D. VSWP

Correct Answer: B

QUESTION 46

A new LUN has been provisioned to all hosts in a vSphere 5.x cluster. On one host a new VMFS datastore has been created. How will the new datastore be discovered by the other ESXi 5.x hosts?

- A. A rescan of all host bus adapters is periodically performed by ESXi hosts to detect new VMFS datastores.
- B. New VMFS volumes are automatically added to members of a cluster by vCenter 5.
- C. A manual refresh is required on each ESXi 5.x hosts to discover new VMFS datastores.
- D. A refresh of all host bus adapters is periodically performed by ESXi hosts to detect new VMFS datastores.

Correct Answer: B

QUESTION 47

Assuming that the appropriate HA configuration options have been selected, in which two situations would vSphere HA be unable to restart virtual machines? (Choose two.)

- A. A storage error has occurred on the fiber channel storage array.
- B. An ESXi host in the cluster becomes isolated from the network
- C. An ESXi host was automatically put into Standby Mode
- D. Licensing was not updated after an upgrade from vSphere 4.x

Correct Answer: AD

QUESTION 48

What do changes made to resources reserved by a resource pool affect in the resource hierarchy?

- A. Child pools
- B. Host pools
- C. Sibling and parent pools
- D. Root resource pools

Correct Answer: C

QUESTION 49

How can virtual machines be moved between datacenters?

- A. High-Availability failover
- B. Cold migration
- C. vMotion migration
- D. Storage vMotion migration

Correct Answer: B

QUESTION 50

Before you upgrade an ESXi host:

- A. update the ESXi restore CD with the current ESXi image
- B. save the current ESXi image to another ESXi server
- C. copy the embedded ESXi image to a USB flash drive
- D. save the ESXi configuration using `vicfg-cfgbackup s` from the vCLI

Correct Answer: D

Exam C

QUESTION 1

An administrator decides to use Data Recovery to back up some key virtual machines. What is the process to install Data Recovery?

- A. Download the executable from VMware.com and run from a machine with the vSphere Client installed.
- B. Use the vCenter Installer from the original vCenter media and select VMware Data Recovery
- C. Download the current OVF package from VMware.com onto a machine with the vSphere Client installed and use the Deploy OVF from Template option.
- D. Download the vmdk and vmx files from VMware.com and copy to a datastore. Right-click the vmx file and select Add to Inventory.

Correct Answer: C

QUESTION 2

Which two statements are true about the share value for a virtual machine after it has been added to a resource pool? (Choose two.)

- A. If a previously defined custom share value exists, the total shares in the pool should be evaluated to maintain the expected performance.
- B. If a previously defined custom share value exists, the %Shares value will automatically be adjusted relative to the total number of shares in the pool.
- C. If a previously defined share level (high, medium, low) exists, the %Shares value is changed to Custom and the previous value is retained.
- D. If there are no other objects in the pool the share value is irrelevant.

Correct Answer: BD

QUESTION 3

The storage administrator has recommended testing the performance benefits of jumbo frames and enabled jumbo frames on the storage array. The VMware administrator has enabled jumbo frames on the VMkernel port used for the software iSCSI initiator. What other two components must be modified to enable jumbo frames support for the software iSCSI initiator? (Choose two.)

- A. The physical switch
- B. The port group
- C. The software initiator
- D. The virtual switch

Correct Answer: AD

QUESTION 4

If you create a custom role and do not assign privileges what system-defined privileges are added? (Choose two.)

- A. System.Anonymous
- B. System.Read
- C. System.Write
- D. System.Administrator

Correct Answer: AB

QUESTION 5

Assuming that VLANs are not configured, what is true about traffic from a virtual machine connected to a port group on a vSphere Standard Switch with no uplinks?

- A. The virtual switch will drop the packets if no uplink is present.
- B. Virtual machines on any vSphere Standard Switch on the same ESXi host can receive the traffic.

- C. Virtual machines in any port group on the virtual switch can monitor all of the traffic.
- D. vMotion will not migrate any Virtual machines connected to a port group on the virtual switch.

Correct Answer: D

QUESTION 6

What function does Enhanced vMotion Compatibility (EVC) provide?

- A. The ability to enable Fault Tolerance on virtual machines that are not members of a cluster.
- B. The ability to use vMotion to migrate virtual machines between ESXi hosts with different CPU vendors.
- C. The ability to replace manual CPU identification masks with an automated process managed by the cluster.
- D. The ability to use vMotion to migrate virtual machines between hosts with identical CPUs but different vSphere versions.

Correct Answer: C

QUESTION 7

What is the default VFAT scratch partition size for ESXi 5.x when installed on a USB drive?

- A. 600MB
- B. 544MB
- C. 4GB
- D. none

Correct Answer: D

QUESTION 8

What is one requirement when adding an extent to a VMFS datastore?

- A. A new unused NFS mount
- B. An RDM with sufficient space available
- C. An unused iSCSI or FCP LUN
- D. Free space on the LUN holding the VMFS datastore

Correct Answer: C

QUESTION 9

What is an accurate statement about the secondary virtual machine of a VM that has VMware Fault Tolerance enabled?

- A. The secondary virtual machine cannot be stored on an NFS datastore.
- B. The secondary virtual machine is created on the same host as the primary.
- C. The secondary virtual machine can prevent other virtual machines from powering up.
- D. The secondary virtual machine can be used for load balancing.

Correct Answer: C

QUESTION 10

What is true about the HA agent on ESXi 5.x hosts?

- A. HA agent logs and entries use the prefix aam
- B. HA agents are set to start by default
- C. HA agents can store configuration information locally
- D. vSphere client cannot determine which HA agent is master

Correct Answer: C

QUESTION 11

An administrator is enabling Network I/O Control (NIOC) on a vSphere Distributed Switch. Which types of network traffic can be prioritized with NIOC by default? (Choose three.)

- A. FCP Traffic
- B. NFS Traffic
- C. Virtual Machine Traffic By Virtual Machine
- D. iSCSI Traffic
- E. vSphere Replication (VR) Traffic

Correct Answer: BDE

QUESTION 12

How can you verify that vStorage APIs for Array Integration (VAAI) functionality is enabled for a storage array in a vSphere 5.x implementation?

- A. VAAI will be reported on the Hard Disk properties page for any VMDK stored on a compliant array
- B. Hardware Acceleration will be reported on the Hard Disk properties page for any VMDK stored on a compliant array
- C. Supported will be listed in the VAAI column for any datastore created on a compliant array
- D. Supported will be listed in the Hardware Acceleration column for any datastore created on a compliant array

Correct Answer: D

QUESTION 13

The RDP performance for a virtual machine on an ESXi 5.x host appears to be degraded. What are two possible causes of the problem? (Choose two.)

- A. The virtual machine has a high Ready value.
- B. The virtual machine's network adaptor is not configured to Connect at power on.
- C. The virtual machine's network adaptor is not configured as connected.
- D. The virtual machine is on a physical network that has become saturated.

Correct Answer: AD

QUESTION 14

An administrator wants to configure a DRS Migration Threshold that allows automated migration only when a host is placed into maintenance or to satisfy cluster constraints. What setting should be utilized?

- A. Priority 2
- B. Priority 4
- C. The most conservative setting
- D. The default setting

Correct Answer: C

QUESTION 15

An administrator is using Update Manager 5.x to update virtual appliances in a vSphere environment. The environment is using the vCenter Server Virtual Appliance (vCSA). What would cause the remediation to fail?

- A. Updating of the appliance can only be done if the vCenter Server Virtual Appliance (vCSA) has been put into Maintenance Mode.
- B. Remediation must be configured on the Appliance Administration page before use.
- C. Remediation of the vCenter Server Virtual Appliance (vCSA) with Update Manager is not supported.
- D. Remediation requires the hosts to be connected to vCenter using an IPv4 address.

Correct Answer: D

QUESTION 16

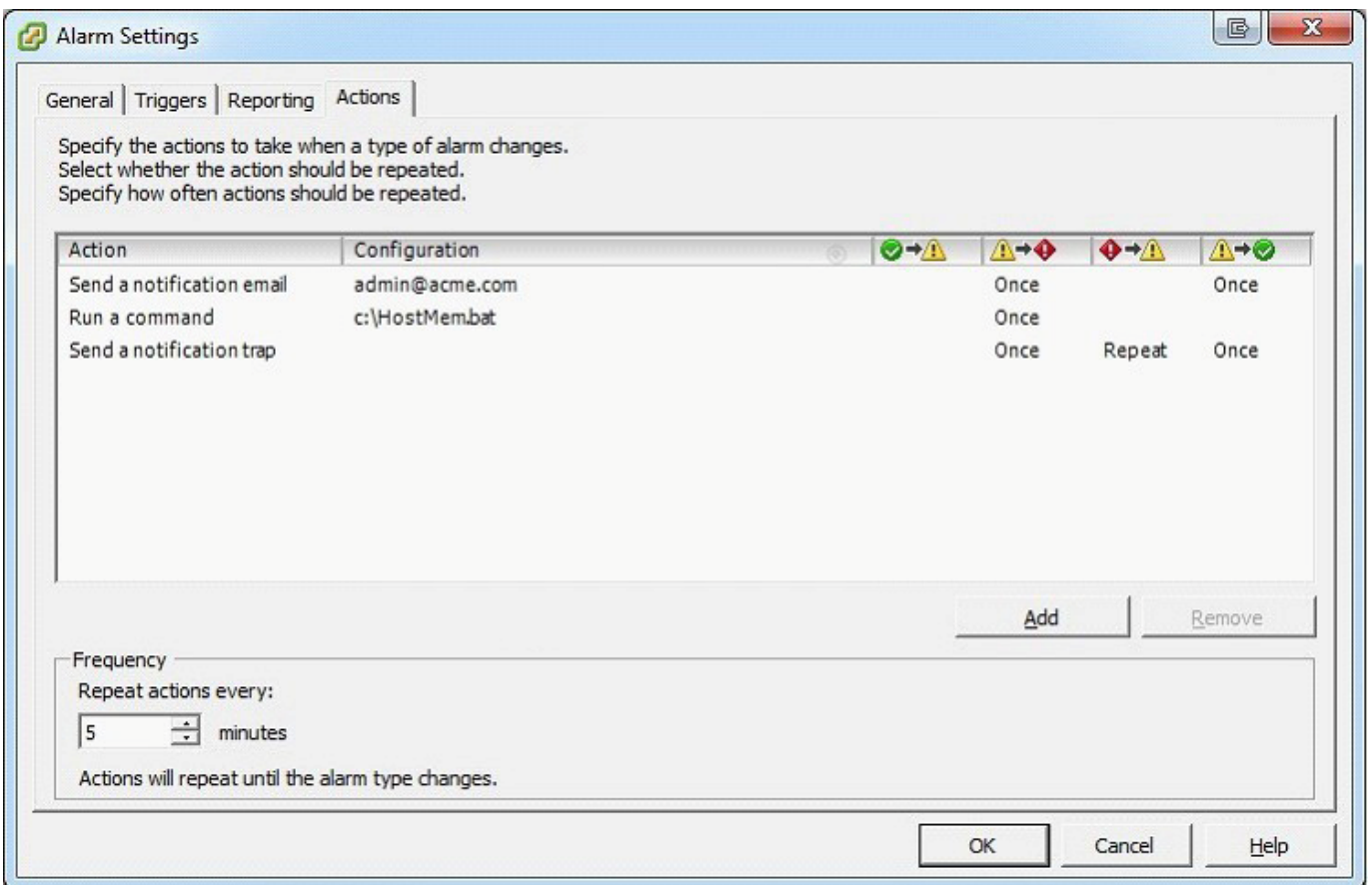
When designing a storage infrastructure to support ESXi 5.x hosts what limit will be reached first?

- A. Maximum number of NFS datastores
- B. Maximum number of iSCSI LUNs
- C. Maximum number of paths to an iSCSI RDM
- D. Maximum number of iSCSI paths on a host

Correct Answer: C

QUESTION 17

Click the Exhibit button. An administrator is seeing a warning on one of their hosts. The warning in the Triggered Alarms panel appears to come from a custom configured host alarm. The administrator has not seen any actions taken for this alarm even though the actions are configured in the alarm definition. The configured actions are shown in the exhibit. What change can the administrator make to correct the problem?



- A. Configure the Alarm Frequency to repeat more often.
- B. Add an action for when the alarm changes from yellow to red.
- C. Add an action for when the alarm changes from green to yellow.
- D. Configure the alarm yellow to red action to repeat for all three actions configured.

Correct Answer: C

QUESTION 18

An administrator is performing upgrades to ESXi 5.x from ESX 3.x and ESX 4.x hosts.

What is true about this procedure?

- A. A direct, in-place upgrade can be performed only on ESX 4.1 and later hosts.
- B. ESX 3.x hosts can be upgraded, but require an upgrade to 4.x before 5.x.
- C. A direct, in-place upgrade can be performed only on ESX 4.5 and later hosts.
- D. A direct, in-place upgrade can be performed only on ESX 3.5 and later hosts.

Correct Answer: B

QUESTION 19

What differentiates a private cloud from a vSphere Infrastructure?

- A. A private cloud requires pooled resources including storage and networking.
- B. vSphere Infrastructure assumes a secure location for the workloads.
- C. vSphere Infrastructure allows consumption of resources over open standards.
- D. A private cloud assumes the consumer will maintain their portion of the infrastructure.

Correct Answer: A

QUESTION 20

Which is the most secure method of connecting to an iSCSI storage array using an independent hardware iSCSI adapter?

- A. One-way CHAP
- B. Mutual CHAP
- C. Per-target CHAP
- D. Per-subnet CHAP

Correct Answer: A

QUESTION 21

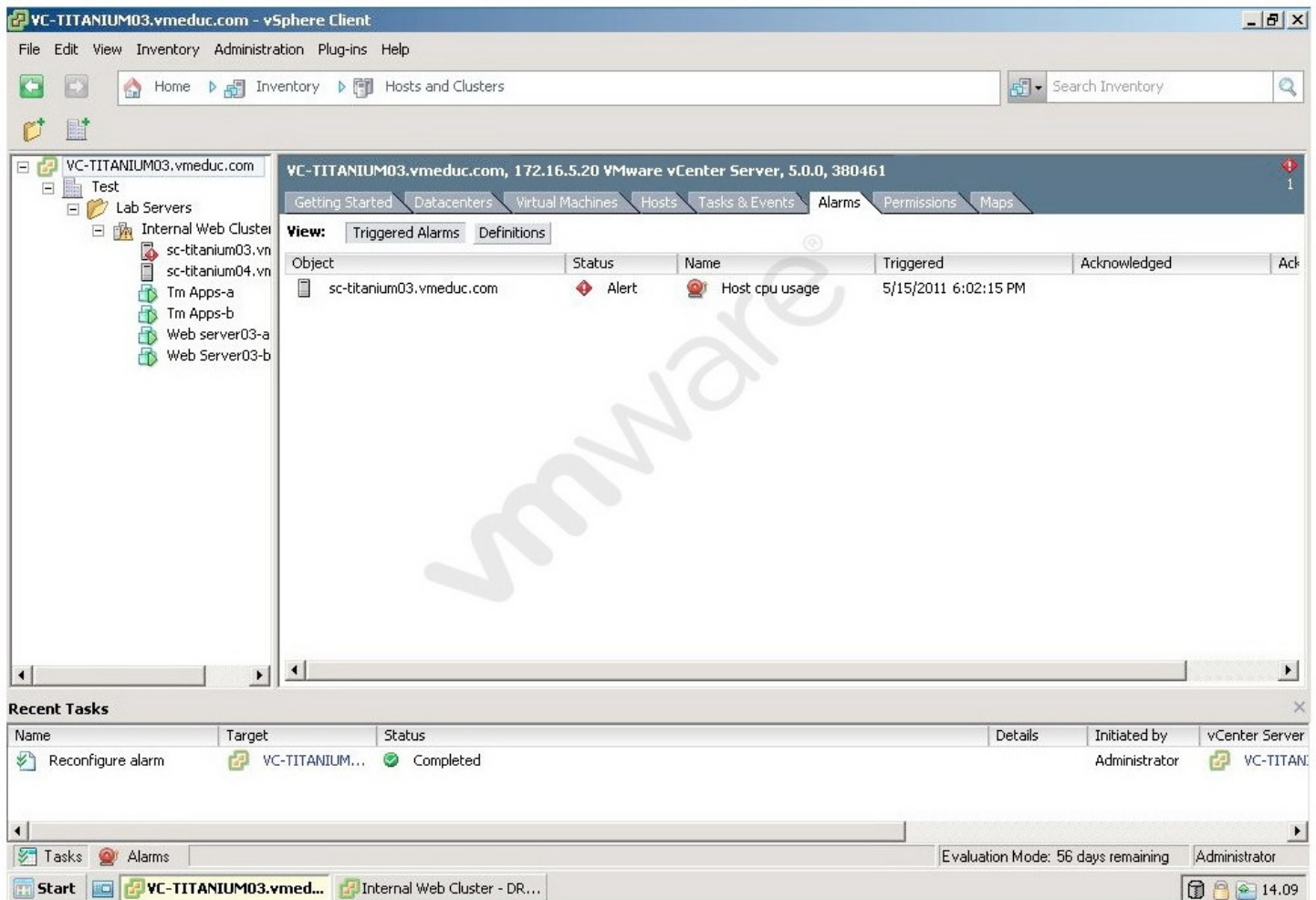
When an explicit failover order has been configured on a virtual switch with multiple uplinks, what determines which uplink is used when a failover event occurs?

- A. The first available uplink that reports a positive link state
- B. The reported uptime for the surviving uplinks
- C. The next available uplink on the list
- D. The uplink with the shortest route

Correct Answer: C

QUESTION 22

Click the Exhibit button. Users are having difficulty accessing a Web server since a new Web application was configured in a virtual machine running on sc-titanium03.vmeduc.com. The web server has been assigned 1 vCPU. The vSphere Client reports the error shown in the exhibit. DRS is set to fully automated mode, but the problem has not resolved. Which action can resolve the issue?



- A. Set a CPU reservation for the web server VM.
- B. Manually move the Virtual Machine using high priority vMotion.
- C. Configure the DRS Migration Threshold to Aggressive.
- D. Set CPU affinity for the virtual machine.

Correct Answer: A

QUESTION 23

Users are complaining that they cannot access their files on a file server virtual machine. The vSphere Client shows that a triggered alarm stating disk latency is beyond the default threshold for the datastore where the file server virtual machine is located. The path selection policy has been set by the ESXi host to Fixed with default path settings. Which two options could be used to increase performance of the file server virtual machine? (Choose two.)

- A. Use disk shares to increase the priority for the datastore housing the file server virtual machine.

- B. Use vMotion to relocate the VM to an ESXi host with lower HBA saturation.
- C. Change the path selection policy to Round Robin.
- D. Change the path selection policy to Most Recently Used (MRU).

Correct Answer: BC

QUESTION 24

When PSA is coordinating the VMware NMP and any installed third-party MPPs, the MPPs perform which task?

- A. Implement logical device bandwidth sharing
- B. Handle I/O queuing to the logical devices
- C. Provide logical device and physical path I/O statistics
- D. Manage physical path claiming and unclaiming

Correct Answer: D

QUESTION 25

Which VMware solution uses the security of a vSphere implementation and provides linked-clone technology to virtual desktops?

- A. VMware ACE
- B. VMware View
- C. VMware Workstation
- D. VMware ThinApp

Correct Answer: B

QUESTION 26

A new ESXi 5.x host is set up with two virtual machines. A memory limit is applied so that users will have predictable performance as virtual machines are added to the host. What is the effect of applying a memory limit to these virtual machines?

- A. No physical memory will be granted above the limit, but VSMP can be used.
- B. No physical memory will be granted above the limit, unless expandableVM shares are set to high.
- C. Physical memory will be granted above the limit under normal conditions. Disk pages will be used if contention occurs.
- D. Physical memory will be granted above the limit under normal conditions, unless physical memory runs out.

Correct Answer: A

QUESTION 27

Which are the correct parameters to specify when adding an iSCSI target to an ESXi 5.x host using the Static Discovery tab?

- A. iSCSI server ip address, port 902
- B. iSCSI server ip address, port 3260
- C. iSCSI server ip address, port 902, iSCSI target name
- D. iSCSI server ip address, port 3260, iSCSI target name

Correct Answer: D

QUESTION 28

Which two options cannot be edited if vApp Options is disabled in the Options tab of a virtual machine that is part of a vApp? (Choose two.)

- A. Transient IP Addresses

- B. Configure OVF properties
- C. IPv6 Protocol
- D. IPv4 Protocol

Correct Answer: AB

QUESTION 29

An administrator decides to implement a Fixed multipathing policy for an ESXi 5.x host with four available paths to one VMFS datastore. After the policy has been enabled for the datastore, how many paths will have an active status by default?

- A. 4
- B. 3
- C. 1
- D. 2

Correct Answer: A

QUESTION 30

An administrator is updating a program running on a virtual machine. The update file has been downloaded as an .iso file and placed on a shared NFS datastore. An attempt to mount the .iso file to the virtual machine fails, but subsequent testing shows that the .iso file can be mounted to a virtual machine running on another ESXi 5.x host. Which step can be taken to enable access to the .iso file for the affected virtual machine?

- A. Reboot all ESXi hosts in the cluster where the affected virtual machine is running.
- B. Refresh all datastores on the ESXi host running the affected VM.
- C. Rescan all datastores on the ESXi host running the affected VM.
- D. Unmount the volume from the ESXi host running the affected VM, and then add as a new datastore.

Correct Answer: B

QUESTION 31

Which two conditions could prevent HA from powering on a virtual machine? (Choose two.)

- A. There is not enough free memory to meet the guests memory reservation.
- B. The virtual machine has been assigned a required affinity rule.
- C. Strict admission control is disabled for the HA cluster.
- D. The vCenter is hosted on the ESXi host that failed.

Correct Answer: AC

QUESTION 32

Which two conditions could prevent HA from powering on a virtual machine? (Choose two.)

- A. An ESXi host has been placed into maintenance mode.
- B. The virtual machine has been assigned a required affinity rule.
- C. Strict admission control is configured.
- D. The vCenter is hosted on the ESXi host that failed.

Correct Answer: AC

QUESTION 33

Which two migration techniques can be used together to move a running virtual machine to a local datastore on a different server? (Choose two.)

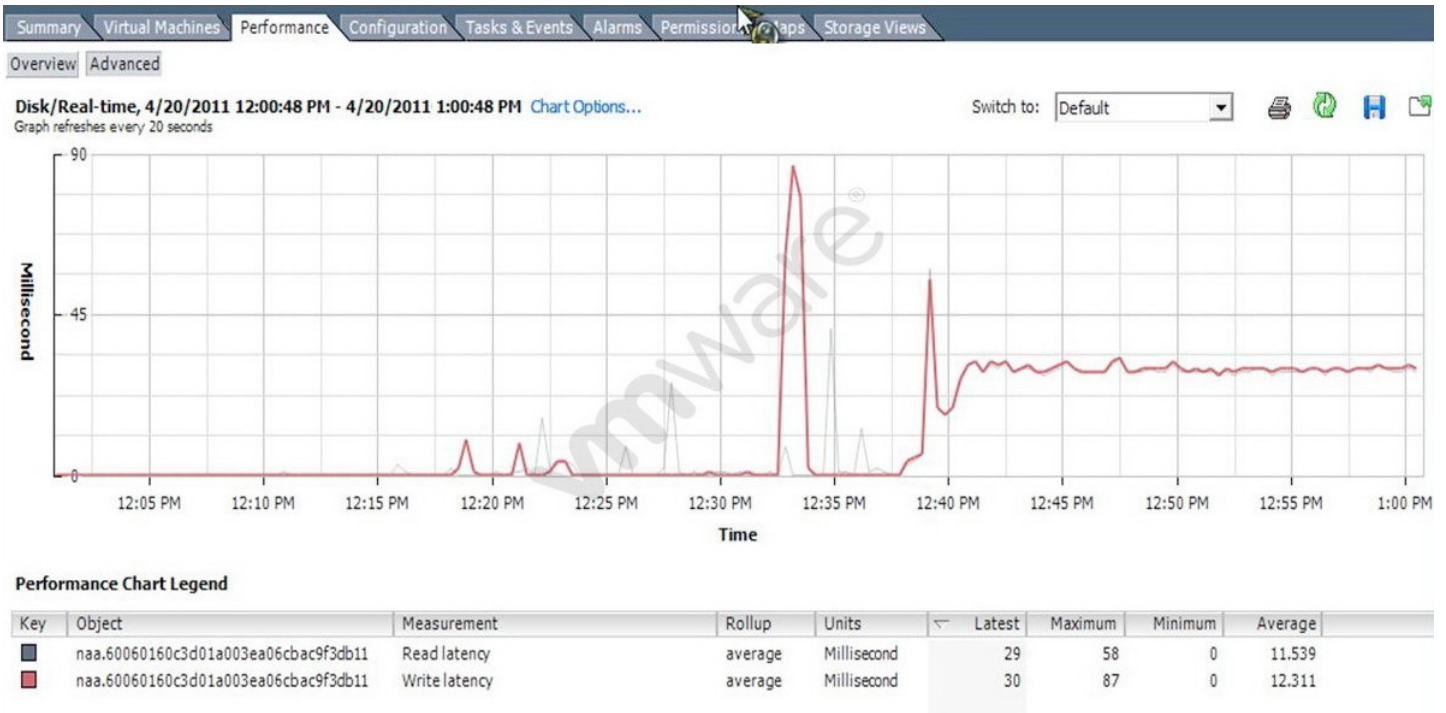
- A. Cold migration
- B. Storage vMotion

- C. vMotion
- D. vSphere Clone

Correct Answer: BC

QUESTION 34

Click the Exhibit button. What does the graph in the exhibit indicate?



- A. The average amount of read and write latency from the ESXi host to the SAN.
- B. The average amount of read and write latency from the guest operating system to the virtual machine virtual disk file.
- C. The average amount of read and write latency from the ESXi host to the datastore.
- D. The average amount of read and write latency from the cluster to the datastore.

Correct Answer: C

QUESTION 35

In vSphere, a bound physical NIC can be configured to transmit and receive jumbo frames. What is the default maximum transmission unit (MTU) in vSphere?

- A. 1500
- B. 5500
- C. 9000
- D. 9500

Correct Answer: A

QUESTION 36

On which two vSphere elements can traffic shaping be configured? (Choose two.)

- A. On a vSphere Distributed Switch dvPort for inbound and/or outbound traffic
- B. On a vSphere Distributed Switch for inbound and/or outbound traffic
- C. On a vSphere Standard Switch port group or the entire vSwitch for inbound traffic
- D. On a vSphere Standard Switch port group or the entire vSwitch for inbound and outbound traffic

Correct Answer: AB

QUESTION 37

In a vSphere HA cluster, what is the maximum number of point-to-point communication links to the slaves does each master maintain?

- A. 32
- B. 64
- C. 512
- D. 1024

Correct Answer: A

QUESTION 38

During peak operating hours, an administrator finds that a business-critical application running in a virtual machine is not performing as well as during normal hours. Which memory management method can be used to guarantee that the application performs well at all times?

- A. Set a reservation equal to the average memory utilization of the virtual machine running the application.
- B. Set the share level to high for the virtual machine running the application and set the share level for all other virtual machines to low.
- C. Check the Reserve all guest memory checkbox.
- D. Set a reservation equal to the installed memory of the ESXi host running the application.

Correct Answer: C

QUESTION 39

A vSphere environment is created with two virtual machines, VM23 and VM43. Each virtual machine has an instance of the front-end web application for the company's manufacturing management database. A physical load-balancer is configured for the application. Which type of DRS rule should be implemented for VM23 and VM43?

- A. Separate Virtual Machines
- B. Virtual Machines to Hosts
- C. Host DRS Groups
- D. Keep Virtual Machines Together

Correct Answer: A

QUESTION 40

Which three services will continue to function when vCenter Server is unavailable? (Choose three.)

- A. Storage DRS
- B. Fault Tolerance (FT)
- C. vMotion
- D. Thin Provisioning
- E. High Availability

Correct Answer: BDE

QUESTION 41

A request has been made to the SAN administrator to provision a new LUN. A LUN (LUN 6) is created, and the SAN administrator presents the LUN to an ESXi 5.x host, using the storage array SAN management software. The administrator looks at the Storage configuration for the ESXi host, and does not see the new LUN. Other LUNs from the same storage array are visible. Which two conditions are most likely to cause the error described? (Choose two.)

- A. The administrator has not performed a Rescan All on the ESXi host.
- B. The multipathing policy has been set to Fixed for the LUN.
- C. Zoning on the Fibre Channel switches is not configured correctly.
- D. The LUN was not presented to the correct ESXi host.

Correct Answer: AD

QUESTION 42

A database administrator has reported periodic poor performance on a particular virtual machine. The virtual machine administrator has noticed a significant drop in performance when utilized memory exceeds 1GB . What does this indicate and what could be checked next?

- A. The application problems are definitely due to a non-memory-related problem. CPU affinity settings should be checked for this virtual machine.
- B. The application problems are definitely due to a non-memory-related problem. CPU utilization should be checked next, using Windows Task Manager.
- C. The virtual machine might not have physical memory available. Compression and swap activity on the ESXi host should be checked next.
- D. The virtual machine might not have physical memory available. Ensure the memory limit on the VM is set to 0 MB

Correct Answer: C

QUESTION 43

What would be a valid reason to enable traffic shaping?

- A. Limiting the bandwidth of a FTP server
- B. Restricting the load on a IDS server
- C. Limiting the bandwidth used by an independent hardware iSCSI adapter
- D. Improving the performance of a CPU-intensive application server

Correct Answer: A

QUESTION 44

Users have reported performance issues with an application running on a Windows VM. Performance analysis shows high CPU activity on the ESXi host but low CPU activity on the Windows VM. A high value in which overview graph and counter on the virtual machine's Performance tab would confirm the results of the performance analysis?

- A. CPU (%) / Wait
- B. CPU Usage (Mhz) / Wait
- C. CPU Usage (Mhz) / Ready
- D. CPU (%) / Ready

Correct Answer: D

QUESTION 45

Which option could be used for vSphere HA heartbeats?

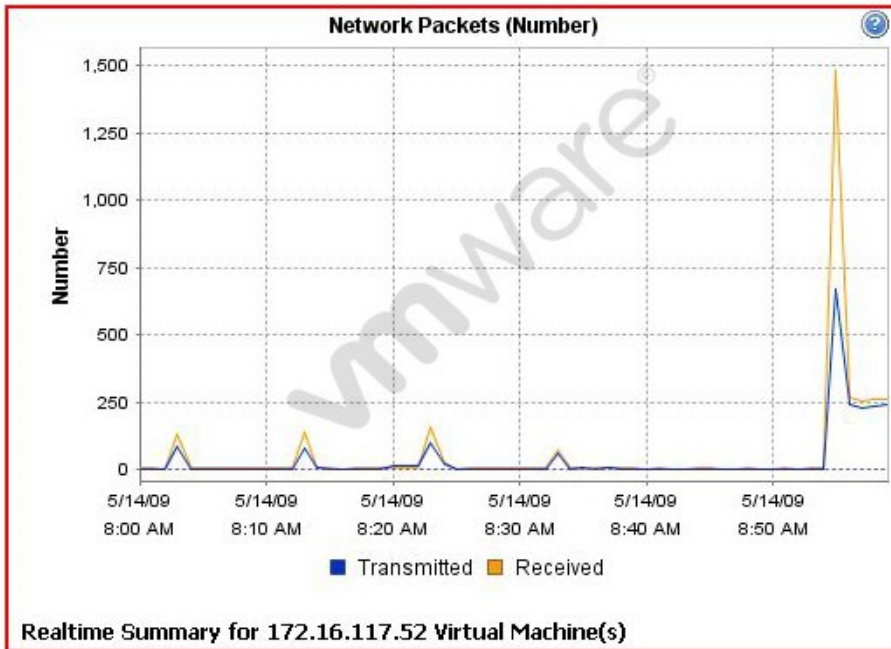
- A. An iSCSI LUN used for booting the master ESXi host.
- B. An iSCSI LUN backing an RDM connected over 10GB Ethernet
- C. An NFS datastore shared with the all hosts, sync, no_root_squash and read only options

D. A Fibre Channel LUN on an 8GB active/active array backing a VMFS5 datastore

Correct Answer: D

QUESTION 46

Click the Exhibit button. An administrator has received reports of poor network performance with a virtual machine. Which task will improve the network performance of this virtual machine?



- A. Adjust shares for the virtual NIC on the virtual machine.
- B. Traffic-shape this virtual machine.
- C. Move the virtual machine to another virtual switch.
- D. Add a CPU to the virtual machine.

Correct Answer: C

QUESTION 47

The performance graph for a virtual machine with 1GB of RAM shows the Swap In rate to be 150 MBps and the Balloon value to be at 0 MB . Users of the virtual machine are complaining that performance is slow. Which two actions could increase performance of the virtual machine? (Choose two.)

- A. Install the VMMEMCTL driver on the ESXi host.
- B. Increase the memory share value for this virtual machine.
- C. Install VMware Tools into this virtual machine.
- D. Disable swapping in the virtual machine operating system.

Correct Answer: BC

QUESTION 48

Which two components can be installed in monitored virtual machines to trigger vSphere HA Application Monitoring? (Choose two.)

- A. A custom script utilizing the appmonitor executable
- B. The vSphere Fault Tolerant agent
- C. Third-party utilities such as Neverfail or ApplicationHA
- D. The vSphere HA application agent

Correct Answer: AD

QUESTION 49

What are two considerations when using resource pools in a vSphere cluster? (Choose two.)

- A. Default shares are equal for all sibling resource pools, regardless of virtual machines or child pools
- B. By default, Reservations can be exceeded
- C. vMotion must be setup prior to creating Resource Pools
- D. DRS rules cannot violate Resource Pool membership

Correct Answer: AB

QUESTION 50

A vSphere 5.x implementation contains two ESXi hosts, ESXi01 and ESXi02. There is a virtual machine "VM21" connected to the Production port group on ESXi01.

ESXi01 has the following switch configuration.

- vSwitch0, single uplink to 10.1.20.0/24
 - Production port group
 - VMkernel port for vMotion
 - VMKernel port for management
- vSwitch1, single uplink to 10.1.40.0/24
 - Engineering port group
 - VMKernel port for NFS storage

ESXi02 has the following switch configuration.

- vSwitch0, single uplink to 10.1.20.0/24
 - Engineering port group
 - VMkernel port for vMotion
 - VMKernel port for management
- vSwitch1, single uplink to 10.1.40.0/24
 - Production port group
 - VMKernel port for NFS storage

Which two statements are true about this configuration? (Choose two.)

- A. vMotion is not available between the two hosts
- B. If VM21 is migrated to ESXi02 it will not be available on the network
- C. The virtual machine can be vMotion migrated to the target host.
- D. Broadcasts from the Production port group will not reach the Engineering port group.

Correct Answer: BD

Exam D

QUESTION 1

The storage administrator is preparing an action plan to upgrade a Fibre Channel storage array. The current plan will result in extended downtime for a VMFS LUN that is part of a SDRS cluster. What steps can be taken in a vSphere 5.x environment to minimize the impact of the downtime? (Choose two.)

- A. Ensure there are multiple active paths to the LUN
- B. Ensure DRS is configured properly
- C. Use Storage vMotion to migrate the affected VMDKs
- D. Place the datastore into maintenance mode

Correct Answer: CD

QUESTION 2

Which two types of information can be obtained about a VMFS datastore using the Summary tab for a connected host in the vSphere Client? (Choose two.)

- A. Multipathing status for the datastore
- B. Hardware Acceleration status
- C. Alarm Actions status for the datastore
- D. Runtime name of the datastore

Correct Answer: BC

QUESTION 3

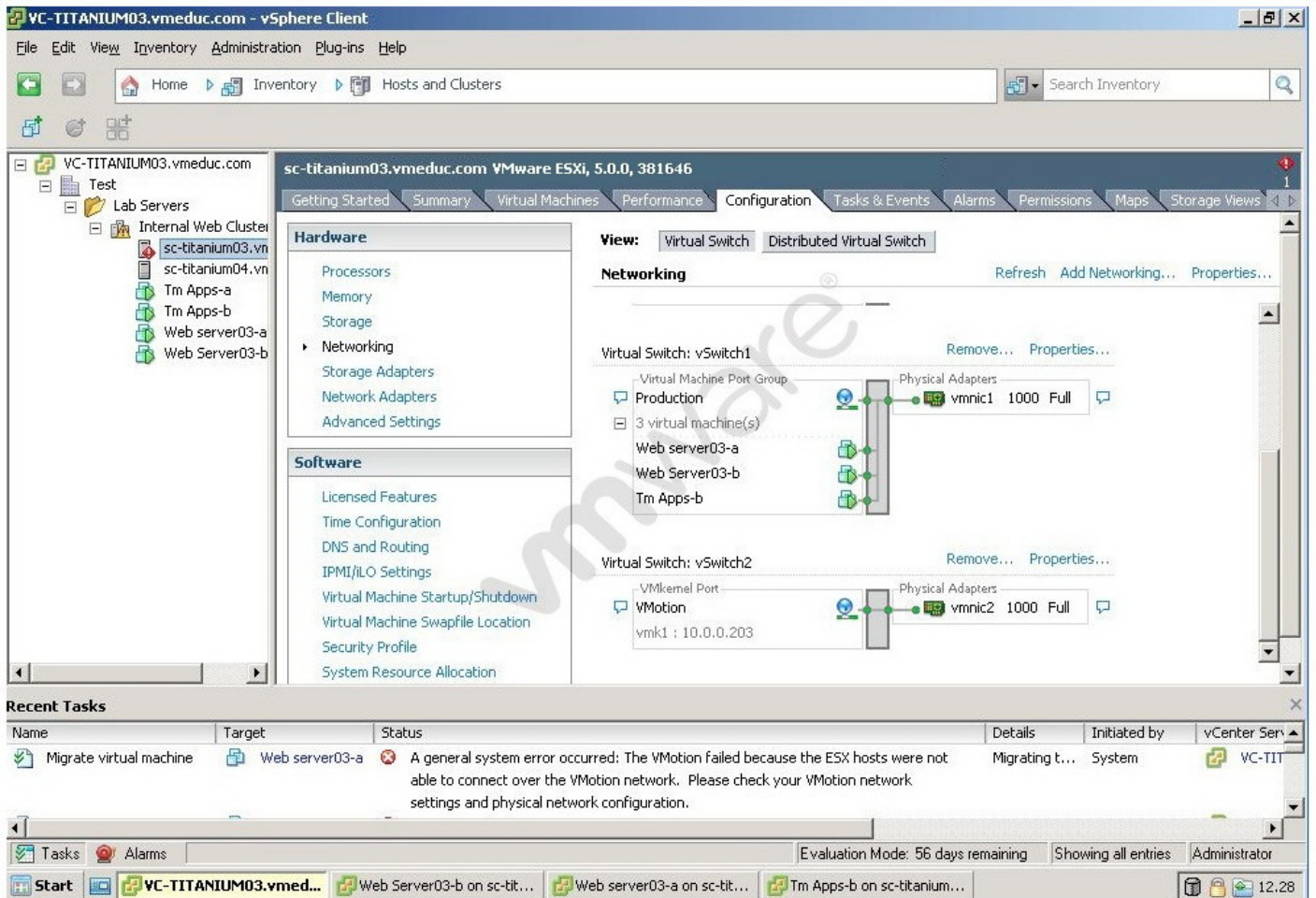
What are three reasons for deploying vCenter Server in a physical machine? (Choose three.)

- A. vCenter Server can be deployed as physical machine to support a VSA configuration.
- B. vCenter Server can be deployed as a physical machine to ensure it is not susceptible to vSphere outages.
- C. vCenter Server can be deployed as a physical machine to improve VMware Data Recovery performance.
- D. vCenter Server can be deployed as a physical machine to improve vMotion performance.
- E. vCenter Server can be deployed as a physical machine to ensure it does not contend for resources.

Correct Answer: ABE

QUESTION 4

Click the Exhibit button. An administrator has deployed a two-node cluster with HA and DRS enabled. DRS has been configured for fully automated mode. The management and vMotion interfaces have been configured on separate physical networks. Initial DRS testing on this cluster reveals that virtual machines are not being migrated despite great disparity in resource use between the ESX hosts in the cluster. The exhibit shows the error and the network configuration for one of the hosts. Which task would successfully resolve this problem?



- A. Add a vmnic to the VMkernel port
- B. Configure the DRS Migration Threshold to Aggressive
- C. Connect the network cable to the correct physical network
- D. Migrate virtual machines manually using vMotion

Correct Answer: C

QUESTION 5

What are possible valid uses for the default No Access role in vCenter? (Choose two.)

- A. Restrict usage on a object for a member of a group assigned full permissions to the object
- B. Restrict access to sensitive VMs for helpdesk staff
- C. Restrict ESX Admins from managing specific hosts directly
- D. Restrict administrators from managing hosts via vCenter

Correct Answer: BD

QUESTION 6

Two child resource pools exist for a DRS cluster. The Production resource pool has been configured with a CPU reservation of 20GHz and a memory reservation of 20GB . The pool has 16 single- processor virtual machines and 4 dual-processor virtual machines. Each of these virtual machines has a CPU reservation of 1GHz and a memory reservation of 1GB . The Development resource pool and it's virtual machines have been configured with no reservations. The pool has 1 single-processor virtual machine and 1 dual-processor virtual machine. CPU Shares are set to 4000 and Memory Shares are set to 163840. The Production team members occasionally complain about the performance of their servers. Which two options could be part of the plan to to resolve the issue while minimizing the amount of resources reserved by the pool? (Choose two.)

- A. Increase the amount of CPU resources for the Production virtual machines to the processor speed of the host
- B. Set the CPU Shares of Production to 40000
- C. Double the CPU reservation on the Production virtual machines and pool
- D. Set the Memory Shares of Production to 20480

Correct Answer: BC

QUESTION 7

A user wants to receive an email notification when the virtual machine CPU usage enters a warning state and again when the condition enters a alarm state. Which two state changes must be selected to receive the appropriate notifications? (Choose two.)

- A. Yellow-red state change
- B. Red-green state change
- C. Yellow-green state change
- D. Green-yellow state change

Correct Answer: AD

QUESTION 8

An administrator has just completed an update of an ESXi 5.x host. Prior to the upgrade, a backup of the host configuration was performed. After the upgrade, the backup was restored to the upgraded host. Shortly after the upgrade was completed, the administrator receives complaints that users are unable to power on virtual machines. What are the two most likely reasons that VMs cannot power up on this host? (Choose two.)

- A. The update reset the virtual machine reservations.
- B. It has been more than 60 days since the host was originally installed.
- C. Backup and restore does not include licensing.
- D. The backup was performed prior to a license key being applied.

Correct Answer: BD

QUESTION 9

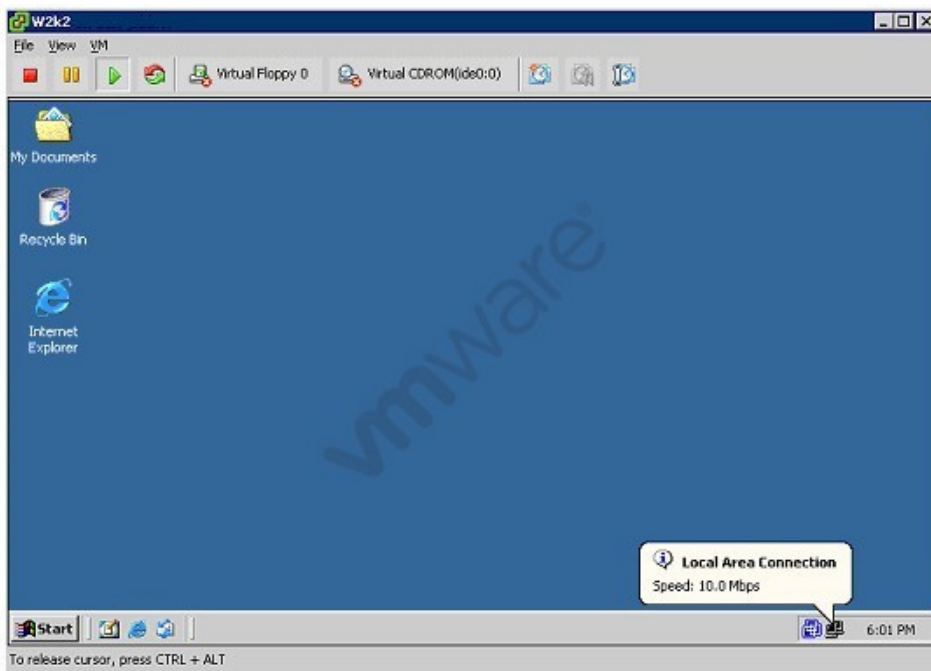
Which memory conservation technique collaborates with the server to reclaim pages that are redundant in a virtual machine or virtual machines?

- A. Memory Balloon Driver
- B. Transparent Page Sharing
- C. Redundant Memory Driver
- D. VMkernel Swap

Correct Answer: B

QUESTION 10

Click the Exhibit button. Which statement is true about the network performance of the virtual machine in the exhibit?



- A. The virtual machine can send at the maximum of 10Mbps.
- B. The virtual machine can send traffic as fast as the underlying virtual switch allows.
- C. Virtual switch autonegotiation settings must to be adjusted to improve performance.
- D. The underlying physical NIC is configured for 10Mbps.

Correct Answer: B

QUESTION 11

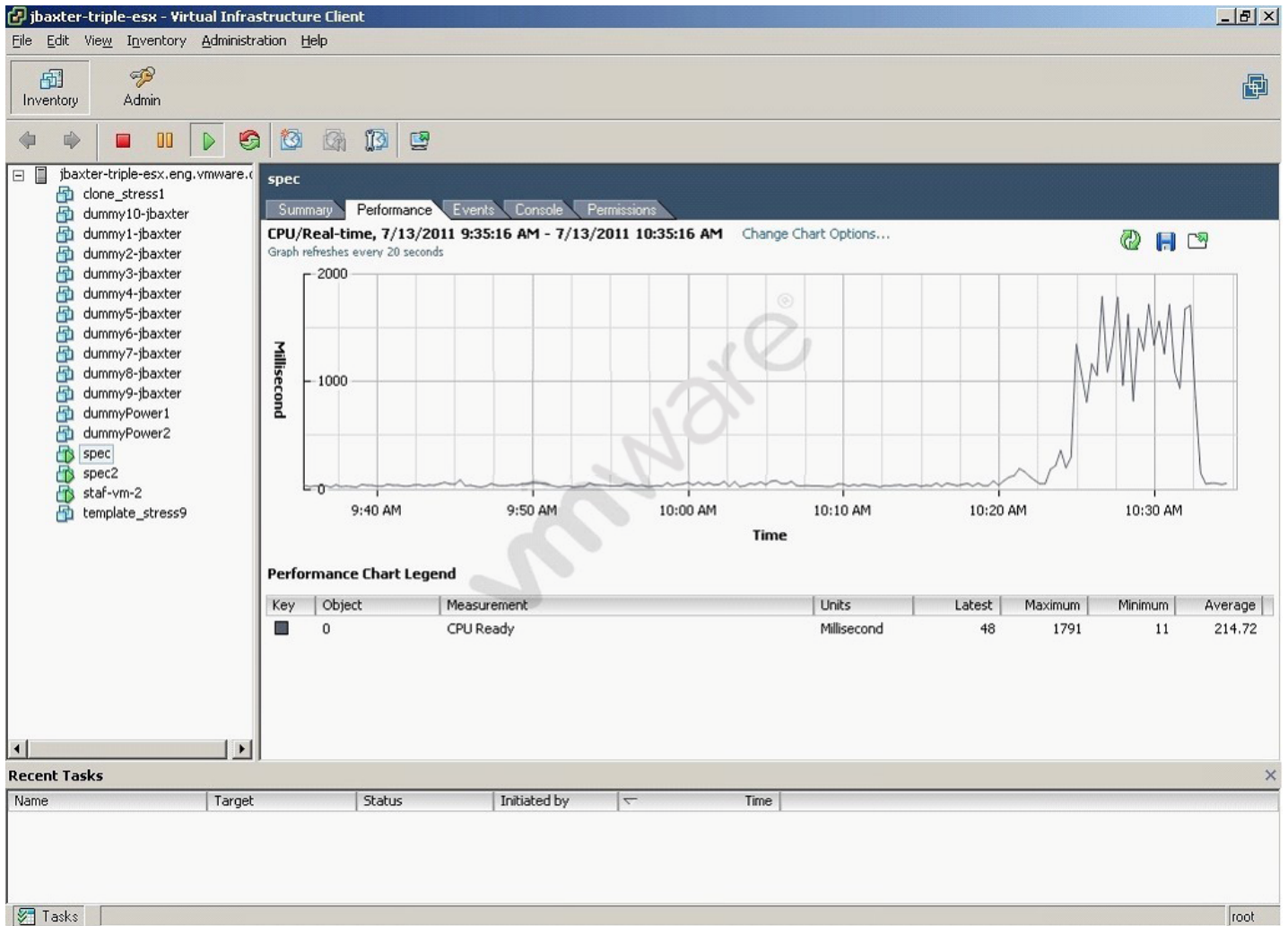
What are two reasons creating a host profile could fail? (Choose two.)

- A. Selecting a VMware Infrastructure 3.5 host
- B. The host selected is currently in maintenance mode
- C. Special characters were used when naming vSphere objects
- D. Evaluation Licenses are being used

Correct Answer: AC

QUESTION 12

Click the Exhibit button. Which change will eliminate the symptom in the performance chart shown in the exhibit?



- A. Set CPU shares to High
- B. Set CPU affinity for the virtual machine
- C. Migrate the VM to a host that is less utilized
- D. Add a CPU to the virtual machine

Correct Answer: A

QUESTION 13

vCenter Server is running in a virtual machine that is part of a vSphere DRS cluster. The vCenter Server virtual machine has been tested and can successfully migrate with vMotion between all ESXi hosts in the cluster. DRS is configured for partial automation. What happens if an ESXi 5.x host that is running the vCenter Server virtual machine experiences a power outage?

- A. All DRS cluster operations will be unavailable until the failed ESXi host is brought back online.
- B. vCenter Server will remain offline, but all virtual machines on the remaining hosts will continue without interruption.
- C. This situation cannot occur, because vCenter Server cannot be installed on a virtual machine in a vSphere DRS cluster.
- D. vSphere will restart the vCenter Server virtual machine on another host.

Correct Answer: D

QUESTION 14

How can vCenter maps be used outside of the vSphere client? (Choose two.)

- A. Saved to a Visio .vsd file
- B. Sent to a printer
- C. Exported as a jpg
- D. Saved as a PDF

Correct Answer: BC

QUESTION 15

Which two VMware software components can be updated by Update Manager? (Choose two.)

- A. ESX 3.5
- B. Virtual Appliances
- C. vCenter Server
- D. Guest OS

Correct Answer: AB

QUESTION 16

Which network settings are only available with vSphere Distributed Switches?

- A. Jumbo Frames
- B. PVLAN
- C. Load Balancing
- D. Promiscuous Mode

Correct Answer: B

QUESTION 17

An administrator is configuring an ESXi 5.x host with two dual-port Fibre Channel (FC) HBAs. The FC storage array has four active storage processor ports. Zoning is configured on both fabrics, with ESXi HBA ports and the array ports in the same zone. There are two LUNs with VMFS datastores configured. Using Round Robin multipathing, what is the maximum number of paths that can be used to send data to the VMFS datastores at any given time?

- A. 2
- B. 3
- C. 1
- D. 4

Correct Answer: A

QUESTION 18

Which two statements are true regarding a mixed DRS cluster with Intel-based and AMD-based ESXi 5.x hosts? (Choose two.)

- A. DRS can load-balance running virtual machines, assuming multiple hosts per CPU family.

- B. HA can only failover virtual machines to hosts within the same CPU family.
- C. Cold Migration may be needed to balance the performance load on the cluster
- D. Storage vMotion will not be available for this cluster

Correct Answer: AC

QUESTION 19

Which two vCenter plug-ins are installed with a default vSphere Client installation? (Choose two.)

- A. vCenter Hardware Status
- B. VMware ESXi Service Status
- C. VMware vSphere Update Manager
- D. VMware vCenter Storage Monitoring Service

Correct Answer: AD

QUESTION 20

An administrator has two ESXi 5.x hosts. Each host has two resource pools, Production and Test and a vApp named TestvApp01. What is true when these hosts are added to a DRS cluster?

- A. An option is given during the process to graft the pools under the cluster's root pool, the vApp will be removed.
- B. An option is given during the process to graft the pools and vApp under the cluster's root pool.
- C. The resource pools and vApp are automatically grafted into the cluster under the root pool.
- D. The resource pools and vApp are automatically removed when the host is added.

Correct Answer: A

QUESTION 21

A user has permissions to create and manage alarms and tasks for a group of virtual machines. What happens if an administrator modifies permissions for the user so that they can no longer manage alarms?

- A. The user can no longer create alarms, but can modify or delete the existing alarms.
- B. The user can create alarms but can no longer modify or delete alarms.
- C. The user can no longer create, modify or delete alarms.
- D. The Alarms tab is dimmed in the vSphere Client and no alarm-related actions may be taken by the user.

Correct Answer: B

QUESTION 22

When would an administrator configure the Explicit Failover option for a portgroup created on a virtual switch with multiple uplinks?

- A. To manually configure load balancing for the portgroup
- B. To share uplinks between vSwitches
- C. When configuring iSCSI Software Initiator multipathing
- D. If the physical switch does not support etherchannel or 802.3ad

Correct Answer: C

QUESTION 23

Which two actions can be scheduled through the Scheduled Task wizard in the vSphere Client? (Choose two.)

- A. Remove a host.
- B. Change the VM power state.
- C. Create a virtual machine.
- D. Revert to a snapshot of a virtual machine.

Correct Answer: BC

QUESTION 24

Which three features can be used in combination with network-attached storage (NAS)? (Choose three.)

- A. Datastores up to 64TB
- B. virtual-mode RDMS
- C. N-Port ID Virtualization
- D. Storage I/O control
- E. VMware Storage DRS

Correct Answer: ADE

QUESTION 25

What are two reasons why a company would choose to use ESXi 5.x instead of using VMware Workstation 8? (Choose two.)

- A. The company needs to be able to assign existing physical disks to virtual machines.
- B. The company needs remote management of virtual machines
- C. The company needs support for virtual machines with up to sixteen vCPUs
- D. The company wants the lowest overhead possible for the virtual infrastructure.

Correct Answer: CD

QUESTION 26

Which three files are valid virtual machine files that might be identified when examining a folder that contains a virtual machine template on a VMFS datastore? (Choose three.)

- A. RDM map file (-rdm.vmdk)
- B. BIOS settings file (.bios)
- C. Template file (.vmtx)
- D. Lock file (.lck)
- E. Suspended state file (.vmsn)

Correct Answer: ACE

QUESTION 27

While building a VMware View environment one of the design requirements is keeping vCenter and View Composer always available. Which solution can be utilized to achieve this?

- A. vCenter Server Heartbeat
- B. vSphere HA
- C. vSphere FT
- D. Host Based Replication

Correct Answer: A

QUESTION 28

What happens to the total number of shares available to the children of a resource pool if a virtual machine is powered off inside the resource pool?

- A. It remains the same
- B. It decreases
- C. It increases
- D. It remains the same only if a custom share value was configured

Correct Answer: B

QUESTION 29

An administrator is configuring admission control settings for a vSphere HA cluster. The administrator selects the option Allow VMs to Be Powered on Even if They Violate Availability Constraints. Which two events occur during an ESXi host failure? (Choose two.)

- A. Virtual machines with a High restart priority are restarted first.
- B. Virtual machines with a Low restart priority are not restarted.
- C. HA will not restart virtual machines configured for FT.
- D. Virtual machines with VM Monitoring set to Enabled are restarted.

Correct Answer: AC

QUESTION 30

What are three true statements about an integrity check in vCenter Data Recovery? (Choose three.)

- A. The operation is prevented from overlapping with the backup operations.
- B. The operation is scheduled separately from the backup schedule.
- C. An incremental operation can be manually started.
- D. The operation automatically pauses when the end of the maintenance window is reached
- E. By default the operation does not run during normal business hours.

Correct Answer: BDE

QUESTION 31

A DRS cluster with two ESXi 5.x hosts is set to fully automated mode. One host in the cluster is running at 98% CPU utilization. The other host is running at 52% utilization. Upon analysis, it appears that none of the virtual machines are being migrated from the CPU-constrained host, and no recommendations are being generated. What are the two most likely causes of the problem? (Choose two.)

- A. The VMkernel port is assigned an incorrect IP address.
- B. vMotion is not enabled on the VMkernel port.
- C. The DRS Migration Threshold is too aggressive.
- D. VMware DRS is not set to Fully Automated.

Correct Answer: AB

QUESTION 32

An administrator is migrating a virtual machine in a DRS cluster. The migration fails the validation check because of a CPU incompatibility issue. Which items below could be causing this issue? (Choose two.)

- A. Inconsistent CPU manufacturers.
- B. Inconsistent CPU steppings.
- C. Inconsistent CPU generations.
- D. Inconsistent CPU GHZ.

Correct Answer: AC

QUESTION 33

Which two settings are required by the deployment wizard when installing the VMware vCenter Server Virtual Appliance (vCSA)? (Choose two.)

- A. Number of CPUs
- B. Datastore to install on
- C. Linked-mode
- D. Name of the vCenter server

Correct Answer: BD