

100% Money Back
Guarantee

Vendor:VMware

Exam Code:VCP550D

Exam Name:VMware Certified Professional 5 - Data
Center Virtualization Delta Exam

Version:Demo

QUESTION 1

A vSphere administrator determines that more metrics are available for viewing in the realtime view than are available in the daily view for a virtual machine. What is the reason for this discrepancy in the number of available metrics?

- A. The daily view does not contain all of the metrics that the realtime view does.
- B. The default vCenter statistics level is being used.
- C. A vCenter statistics level of 4 is being used.
- D. The daily view presents a different selection of metrics by default than presented by the realtime view.

Correct Answer: B

QUESTION 2

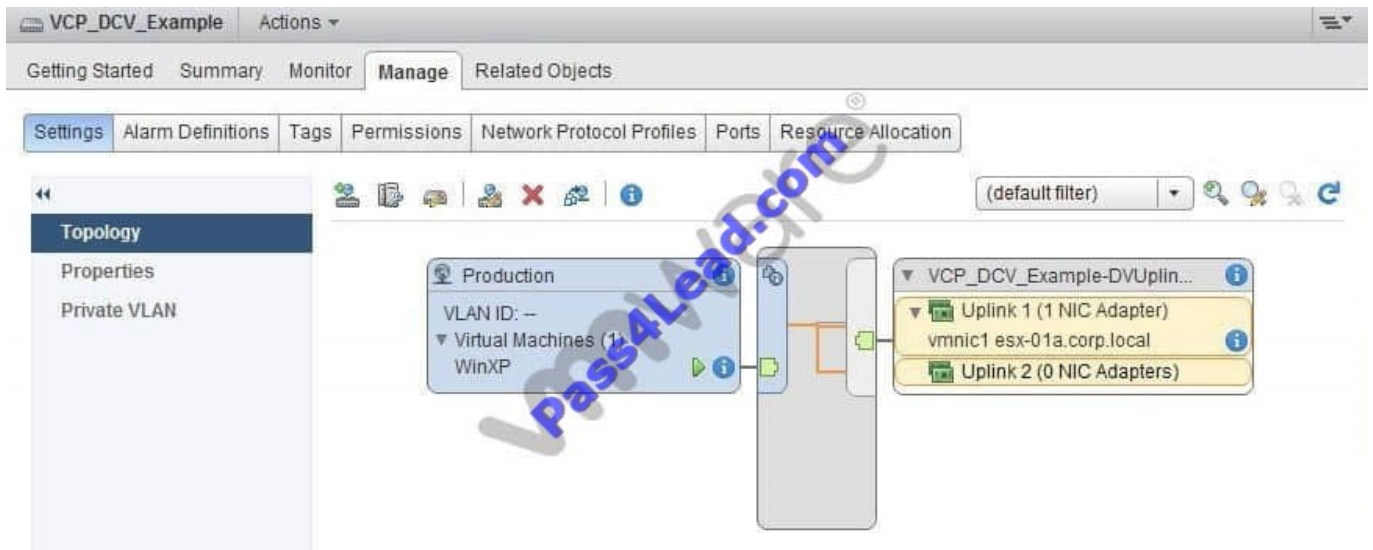
A vSphere Administrator has a multi-tier application deployed in a vApp. The administrator needs to rapidly deploy copies of the multi-tier application to various departmental infrastructures throughout the company. Which step should the administrator take using the vSphere Web Client to allow this?

- A. Export the vApp as an OVF Template
- B. Convert the vApp to a Template
- C. Clone the vApp to a OVF Template
- D. Add the vApp to the Catalog

Correct Answer: A

QUESTION 3

-- Exhibit -



-- Exhibit -Users accessing the WinXP virtual machine shown in the exhibit report intermittent connectivity to the corporate network.

The configuration is as follows:

This virtual machine runs in a DRS/HA cluster of two ESXi hosts.

The VCP_DCV_Example vSphere Distributed Switch was recently created.

The WinXP virtual machine was recently migrated from another vSphere Distributed Switch.

The WinXP virtual machine was able to connect prior to migration to this switch.

No changes to the VCP_DCV_Example switch have been made since creation.

Which step should the administrator take to resolve the WinXP virtual machine's intermittent connectivity to the corporate network?

- A. Add the ESXi host to the switch where the virtual machine is currently running
- B. Disable Port Blocking on the VCP_DCV_Example switch
- C. Disable Port Blocking on the Production port group
- D. Enable Network I/O Control on the switch to better balance I/O

Correct Answer: A

QUESTION 4

An administrator is considering using NPIV to assign WWNs to virtual machines. Virtual machine portability is a major concern. Why would NPIV be inappropriate for this deployment?

- A. Virtual machines using NPIV must use DirectPath I/O.
- B. Storage vMotion is not supported using NPIV.

- C. vMotion is not supported using NPIV.
- D. Enabling NPIV requires SR-IOV supported hardware.

Correct Answer: B

QUESTION 5

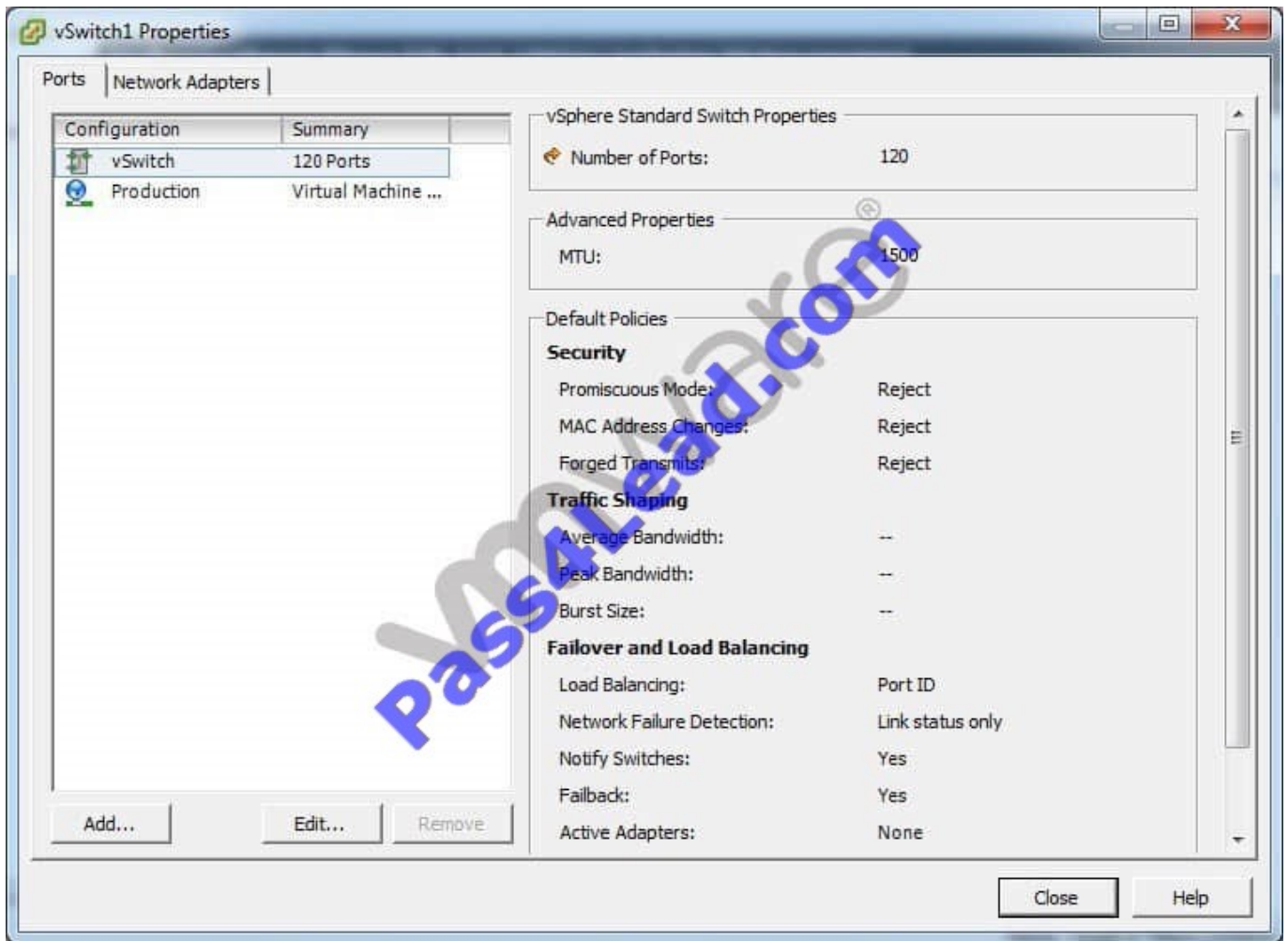
To avoid unnecessary planned downtime, what is the minimum version of VMware Tools that, if installed, will decrease the need for virtual machine reboots following VMware Tools upgrades?

- A. 5.5
- B. 5.1
- C. 5.0
- D. 4.1

Correct Answer: B

QUESTION 6

A security audit has revealed that a virtual machine on vSwitch1 is receiving all traffic sent to the virtual switch, violating corporate policy. The vSphere administrator examines the properties for vSwitch1, as shown in the exhibit: -- Exhibit -



-- Exhibit -Which configuration explains why the virtual machine is receiving all traffic sent to vSwitch1?

- A. The Production port group has the Promiscuous Mode policy set to Accept.
- B. vSwitch1 has the Promiscuous Mode policy set to Reject.
- C. The Network Failure Detection policy on the Production port group is set to Link Status plus Beaconing.
- D. The Network Failure Detection policy on vSwitch1 is set to Link Status only.

Correct Answer: A

QUESTION 7

An administrator needs to provide a report that will help managers better understand how all of their virtual machines are sized.

Which report within vCenter Operations Manager should the administrator provide?

- A. Undersized Virtual Machines Report
- B. Configured Host or Cluster Capacity Report

C. Virtual Machine Capacity Overview Report

D. Virtual Machine Optimization Report

Correct Answer: D

QUESTION 8

-- Exhibit -

The screenshot shows the configuration for a network adapter in a VMware environment. The 'Device Status' section has 'Connect at power on' checked. The 'Adapter Type' is 'E1000'. The 'MAC Address' is set to 'Automatic'. The 'DirectPath I/O' status is 'Not supported'. The 'Network Connection' is set to 'Production'.

-- Exhibit -An administrator is unable to configure Receive Side Scaling on the vmnic driver in a Windows 2008 R2 guest.

Based on the exhibit, what would need to be modified to enable this option?

- A. Manually configure a static MAC address
- B. Enable DirectPath I/O
- C. Ensure the vmnic is attached to the correct network
- D. Change the adapter type to VMXNET3

Correct Answer: D

QUESTION 9

A vSphere administrator needs to upgrade a single extent VMFS3 datastore to VMFS5 and expand it to 4TB in size. The storage administrator has already expanded the underlying LUN to 4TB. Which steps should the vSphere administrator take?

- A. Expand the VMFS3 datastore to 4TB and then upgrade to VMFS5
- B. Upgrade the datastore to VMFS5, manually change the partition scheme to GPT, and then expand the datastore to 4TB
- C. Upgrade the datastore to VMFS5 and then expand it to 4TB
- D. Change the block size of the VMFS3 datastore to 1MB, upgrade the datastore to VMFS5, and expand it to 4TB

Correct Answer: C

QUESTION 10

A customer needs to select an appropriate Path Selection Policy (PSP) for their storage array. There is no requirement for a preferred path. The policy should not select a new path unless the current one fails. Which PSP meets the requirement?

- A. Fixed
- B. Round Robin
- C. Most Recently Used
- D. Asymmetric Logical Unit Access

Correct Answer: C

QUESTION 11

During a physical network reconfiguration, an ESXi host briefly lost connection to the management network. High Availability (HA) began powering off the virtual machines residing on the affected host to be restarted on an unaffected host in the cluster. Which setting should the administrator configure to prevent this behavior in the future?

- A. Host isolation response
- B. Host monitoring
- C. VM monitoring
- D. Admission control

Correct Answer: A

QUESTION 12

An administrator needs to export system logs for an ESXi 5.5 host to determine the root cause for a host performance issue. This host supports manifest-driven exports of system logs. Which manifest is selected by default during the export system log wizard?

- A. Userworld

B. Hostworld

C. PerformanceSnapshot

D. HungVM

Correct Answer: A

To Read the [Whole Q&As](#), please purchase the [Complete Version](#) from [Our website](#).

Try our product !

100% Guaranteed Success

100% Money Back Guarantee

365 Days Free Update

Instant Download After Purchase

24x7 Customer Support

Average **99.9%** Success Rate

More than **800,000** Satisfied Customers Worldwide

Multi-Platform capabilities - **Windows, Mac, Android, iPhone, iPod, iPad, Kindle**

Need Help

Please provide as much detail as possible so we can best assist you.

To update a previously submitted ticket:



 <p>One Year Free Update Free update is available within One Year after your purchase. After One Year, you will get 50% discounts for updating. And we are proud to boast a 24/7 efficient Customer Support system via Email.</p>	 <p>Money Back Guarantee To ensure that you are spending on quality products, we provide 100% money back guarantee for 30 days from the date of purchase.</p>	 <p>Security & Privacy We respect customer privacy. We use McAfee's security service to provide you with utmost security for your personal information & peace of mind.</p>
---	---	--

Any charges made through this site will appear as Global Simulators Limited.

All trademarks are the property of their respective owners.