

**100%** Money Back  
**Guarantee**

**Vendor:**VMware

**Exam Code:**VCPC610

**Exam Name:**VMware Certified Professional 6 - Cloud

**Version:**Demo

### QUESTION 1

When a space-efficient storage technology such as thin provisioning is used how is storage usage tracked against a Machine?

- A. The storage allocated to a provisioned machine is fully committed to that machine, even when it is powered off.
- B. The storage allocated and the storage used are tracked separately and only the storage used is fully committed to the provisioned machine.
- C. The storage allocated to a provisioned machine is fully committed to that machine, only when it is powered on.
- D. The storage allocated and the storage used are tracked separately and the storage allocated is fully committed to the provisioned machine.

Correct Answer: B

---

### QUESTION 2

An administrator needs to create property definitions in the Property Dictionary. After clicking on Blueprints under the Infrastructure tab, the administrator notices that the Property Dictionary menu isn't visible.

What is the issue?

- A. The administrator doesn't have the Fabric Administrator role assigned.
- B. The administrator doesn't have the Tenant Administrator role assigned.
- C. The Property Dictionary is located under the Administration Tab.
- D. The Property Dictionary is located in the Instance Types menu under the Infrastructure Tab.

Correct Answer: A

---

### QUESTION 3

What is required to integrate vCloud Automation Center with vCenter Orchestrator?

- A. Distributed Execution Manager
- B. Plugin
- C. Agent
- D. Identity Appliance

Correct Answer: B

---

### QUESTION 4

An administrator needs to migrate a virtual machine from one datastore to another, but the virtual machine has a snapshot. The virtual machine is running on an ESXi 5.x host.

Which action must the vSphere administrator take to ensure that the snapshot data remains intact?

- A. Perform a standard Storage vMotion migration.
- B. Consolidate the snapshot and then perform a Storage vMotion migration.
- C. Perform a Storage vMotion migration and then copy the snapshot file to the new location.
- D. Delete the snapshot and then perform the Storage vMotion migration.

Correct Answer: A

---

#### QUESTION 5

The installation of the IaaS components fails with the following error.

The IaaS installer failed to save the Model Manager Data and Web components

What are three possible causes for the problem? (Choose three.)

- A. Connectivity issues to the vCloud Automation Center appliance.
- B. The Repository Service failed to start on the IaaS server.
- C. Trusted certificate issues between the vCloud Automation Center appliance and the IdentityAppliance.
- D. The installation is being attempted on an unsupported operating system.
- E. The .NET Framework 3.5 Feature is not installed on the target server.

Correct Answer: ABC

---

#### QUESTION 6

A vSphere administrator is unable to power on a virtual machine that resides in a HA cluster. The administrator determines that the virtual machine has a larger reservation than existing virtual machines.

Which cluster setting should the administrator modify to enable the virtual machine to power on?

- A. Admission control policy
- B. Virtual machine monitoring setting
- C. Virtual machine restart priority
- D. Host isolation response setting

Correct Answer: A

---

### QUESTION 7

An administrator wants a FlexClone machine blueprint to deploy only on FlexClone storage. What is the best method to meet the requirements?

- A. Create a Reservation Policy, and assign the Reservation Policy to the blueprint and storage for FlexClone machine deployments.
- B. Create a business group specifically for FlexClone machine deployments and assign the FlexClone reservation to the business group.
- C. Create a tenant specifically for FlexClone machine deployments and assign the FlexClone reservation to the tenant.
- D. Create a Reservation Policy, assign the blueprint and storage for FlexClone machine deployments to the Reservation Policy.

Correct Answer: A

---

### QUESTION 8

When vCloud Automation Center provisions a vSphere virtual machine from a Blueprint, how is the selection of storage paths prioritized?

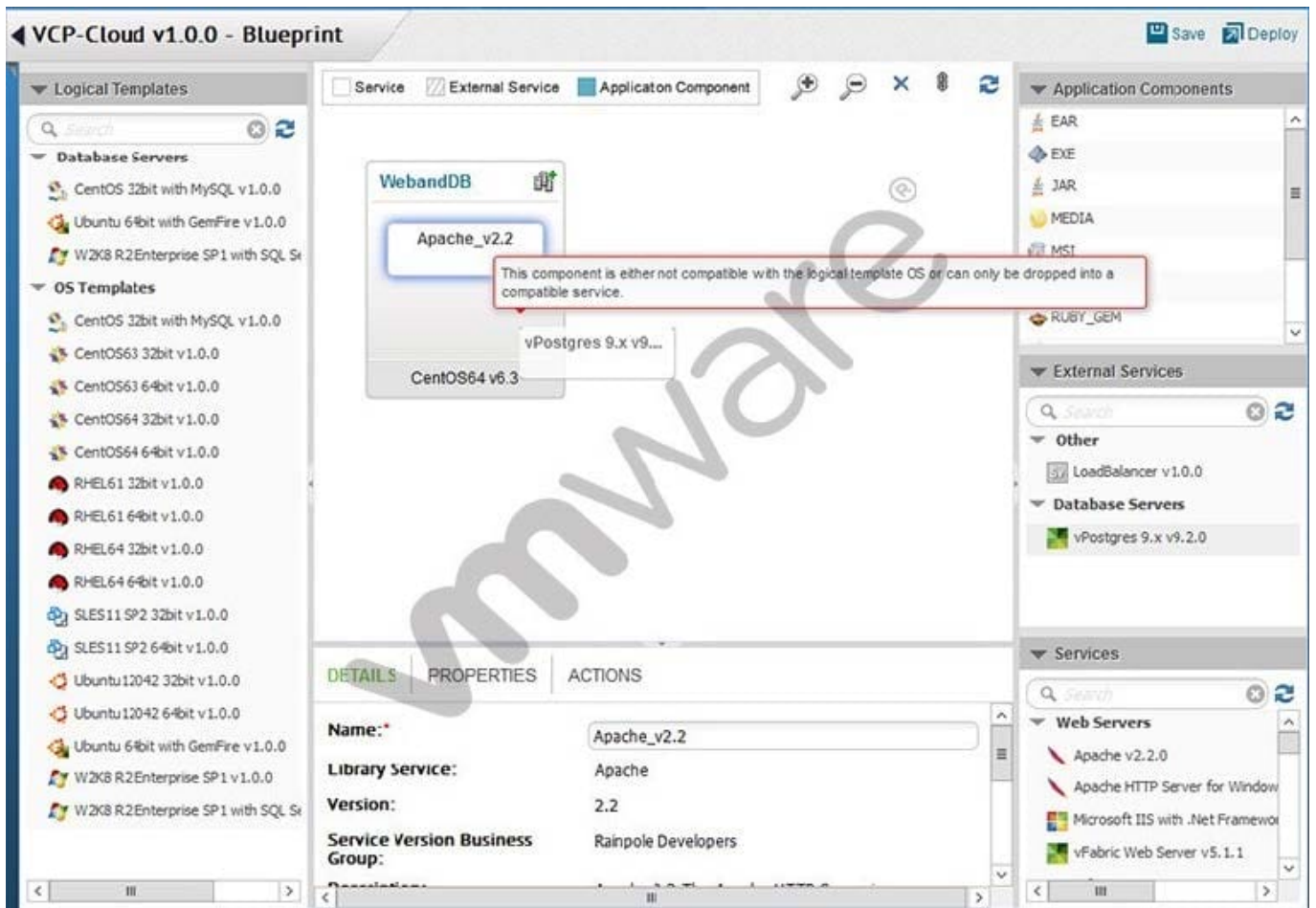
- A. The storage path with the highest priority number is selected for provisioning.
- B. Storage paths are ordered by priority number (lowest to highest) before considering the space available.
- C. Storage paths with sufficient space available are considered; then the highest priority number is selected.
- D. Storage paths with sufficient space available are considered; then the lowest priority number is selected.

Correct Answer: B

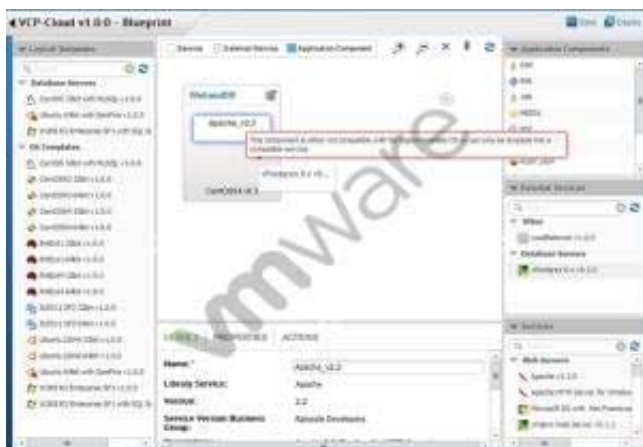
---

### QUESTION 9

Refer to the Exhibit.



While building an application blueprint, the administrator cannot add a vPostgres database service to the new operating system, as shown in the exhibit:



What is needed to resolve this?

- A. Drag and drop vPostgres from the Services menu onto the new operating system.
- B. Delete the current operating system and deploy a new Database Server that includes vPostgres.
- C. Drag and drop a vPostGRES Application Component to join the existing operating system and vPostGRES objects.

D. Add an External Service Instance Profile to the Deployment Environment.

Correct Answer: A

---

#### QUESTION 10

A vSphere administrator notices that hosts are not powering off when the total cluster load is low on a cluster configured with Dynamic Power Management.

What condition could cause this behavior?

- A. The DRS migration threshold is set to the most conservative setting.
- B. The DRS migration threshold is set to the most aggressive setting.
- C. The DPM migration threshold is set to the most conservative setting.
- D. The DPM migration threshold is set to the most aggressive setting..

Correct Answer: A

---

#### QUESTION 11

What is required for a tenant to manage an item in vCloud Automation Center that was created by a vCenter Orchestrator workflow?

- A. A provisioned resource
- B. A resource mapping
- C. A resource action
- D. A published service blueprint

Correct Answer: A

---

#### QUESTION 12

As part of a capacity planning exercise, a user needs a report of all reservations for all Business Groups within the user's department including the percentage used for machine quota, memory, and storage for powered-on virtual machines.

How should the user collect the data for this report?

- A. As a fabric administrator, select the columns needed in the Reservation work area and export the data in a convenient form.
- B. Request that each Business Group Manager provide the Reservation data for the user's department and combine the results.
- C. Request that the database administrator pull the data needed from the appropriate database view exporting in CSV

format.

D. As a fabric administrator, run the Reservation Summary Report from the Reports section in vCloud Automation Center.

Correct Answer: A